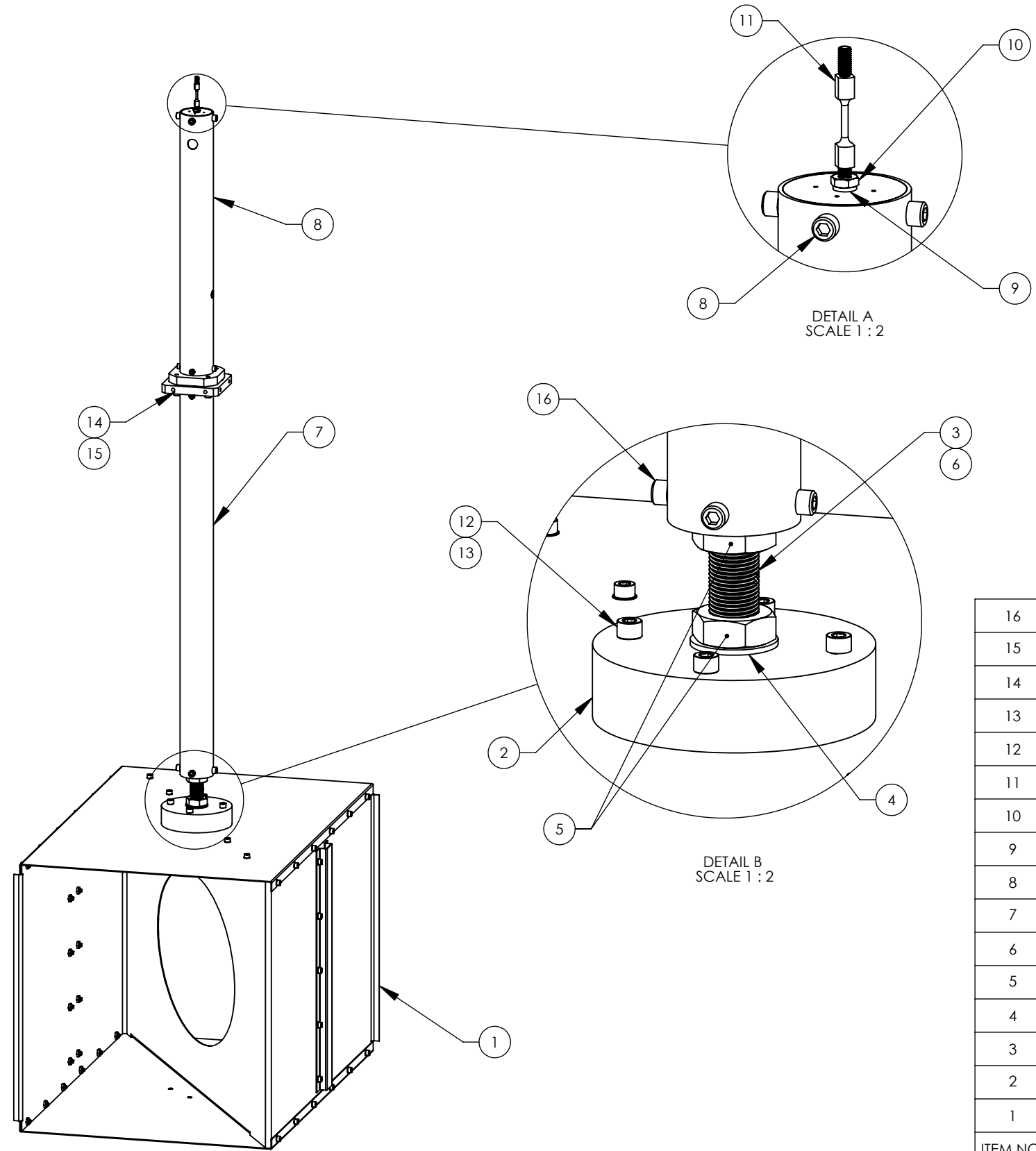


D1002751_AdlIGO_AOS_ITM Elliptical Baffle Left Assy, PART PDM REV: X-054, DRAWING PDM REV: X-011

NOTES CONTINUED:
⑤

REV.	DATE	DCN #	DRAWING TREE #
v1	30 NOV 2010	E1000736	-
-	-	-	-
-	-	-	-



ITEM NO.	PART NUMBER	DESCRIPTION	MATERIAL	REQ	SPARE	TOTAL
16	-	SCREW, SOCKET HEAD CAP, 1/4-20 UNC-2A X 0.5 LONG, FULLY THREADED	300 SSSL	4		4
15	92200A542	Screw, Socket Head Cap, 1/4-20 UNC-2A x 1.00 lg.	300 SSSL	4		4
14	90945A760	Washer, Flat, .25 x .47 OD, 300 SSSL, Nas620-C416L		4		4
13	91240A029	Nut, Hex, .25-20, 300 SSSL		4		4
12	92200A546	SHCS, .25X20 X 1.50 LG., 300 SSSL		4		4
11	D1002340	SLC ACB SUSPENSION ROD	316 SSSL	1		1
10	-	HEX NUT, #10-24	300 SSSL	1		1
9	-	WASHER, FLAT, #10 (NAS 620-C10 OR EQUIVALENT)	300 SSSL	1		1
8	D1002582	SLC BAFFLE TUBE UP ASSEMBLY	N/A	1		1
7	D1002850	ITM Elliptical Down Tube Assy	N/A	1		1
6	D1000684	SLC TUBE LOWER MTG PLATE	6061-T6 Al	1		1
5	N-7516-A	HEX NUT # 3/4-16, UC COMP	Ag 18-8 SSSL	2		2
4	98017A220	WASHER #3/4, MCMaster	300 SSSL	1		1
3	D1001186	SCREW #3/4-16 X 4_McMaster 92198A390	18-8 SSSL	1		1
2	D1002816	ITM Elliptical Baffle Tube Mount	6061-T6 Al	1		1
1	D1002750	ITM ELLIPTICAL BAFFLE SKIN ASSY	N/A	1		1

NOTES AND TOLERANCES: (UNLESS OTHERWISE SPECIFIED)

1. INTERPRET DRAWING PER ASME Y14.5-1994.
 2. REMOVE ALL SHARP EDGES, R.02 MIN.
 3. DO NOT SCALE FROM DRAWING.
 4. ALL MACHINING FLUIDS MUST BE FULLY SYNTHETIC, FULLY WATER SOLUBLE AND FREE OF SULFUR, SILICONE, AND CHLORINE.

DIMENSIONS ARE IN
 TOLERANCES:
 .XX ±
 .XXX ±
 ANGULAR ± °

MATERIAL: N/A FINISH: N/A μinch NEXT ASSY: D1002751

LIGO CALIFORNIA INSTITUTE OF TECHNOLOGY
 MASSACHUSETTS INSTITUTE OF TECHNOLOGY

PART NAME
 ITM ELLIPTICAL BAFFLE LEFT ASSY

DESIGNER M.RUIZ	30 OCT 2010	SIZE B	DWG. NO. D1002751	REV. v1
DRAFTER M.RUIZ	30 NOV 2010			
CHECKER				
APPROVAL				

SCALE: 1:8 PROJECTION: SHEET 1 OF 1