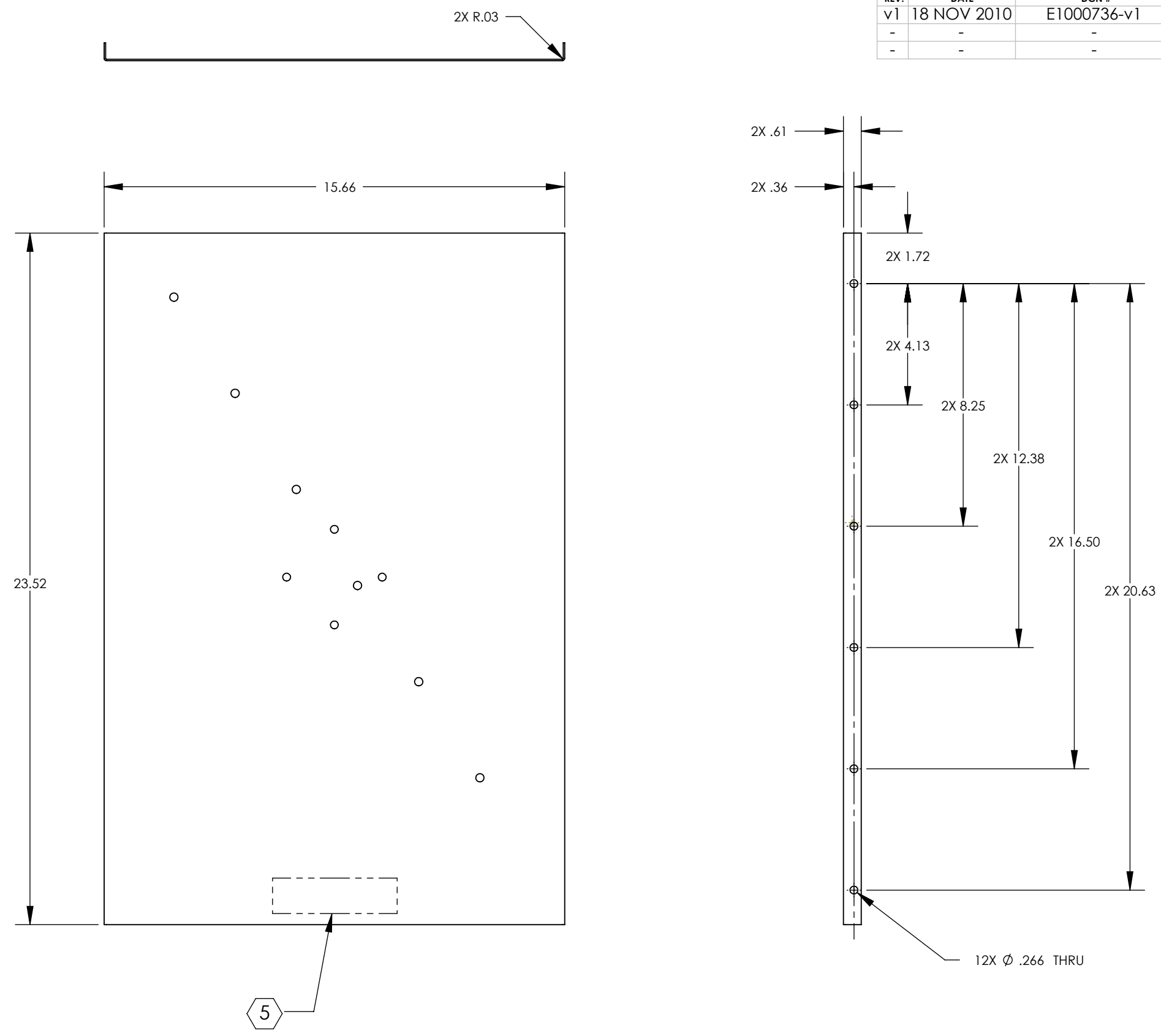


D1002765_AdlIGO_AOS_ITM Elliptical Baffle Upper Cap Skin, PART PDM REV: X-020, DRAWING PDM REV: X-018

8 7 6 5 4 3 2 1

- NOTES CONTINUED:**
- 5. MACHINE PART NUMBER, REVISION, SERIAL NUMBER, .020 DEEP WITH MINIMUM CHARACTER HEIGHT .156 APPROXIMATELY WHERE SHOWN. SERIAL NUMBER WILL START AT 001 AND PROCEED CONSECUTIVELY. EXAMPLE: D100XXXX-V1 S/N 001
 - 6. ALL PARTS SHALL BE MANUFACTURED IN ACCORDANCE WITH LIGO SPECIFICATION E0900364.
 - 7. ALL MATERIAL IS TO BE VIRGIN MATERIAL (i.e. NO WELD REPAIRS OR PLUGS) UNLESS APPROVED IN ADVANCE IN WRITING BY LIGO, REFER TO LIGO-E0900364.
 - 8. NO REPAIRS SHALL BE MADE UNLESS APPROVED IN ADVANCE, AND IN WRITING, BY LIGO LABORATORY. IN GENERAL WELD REPAIRS AND PRESS FIT INSERT REPAIRS ARE NEVER ACCEPTABLE; THE MATERIAL SHOULD BE MADE WITH VIRGIN MATERIAL. SPECIAL CIRCUMSTANCES CAN BE REVIEWED IF / WHEN BROUGHT TO THE ATTENTION OF LIGO CONTRACTING OFFICER'S REPRESENTATIVE (COTR) THROUGH A MATERIAL REVIEW BOARD (MRB) PROCESS, REFER TO LIGO-E0900364.
 - 9. SURFACE FINISH TO BE AS-PROCESSED FROM MILL/SUPPLIER, FREE FROM SCRATCHES & GOUGES.
 - 10. PART WILL BE PORCELAIN COATED AFTER FABRICATION. ALL MOUNTING HOLES WILL BE MASKED ($\varnothing 0.63$) PRIOR TO PORCELAIN COATING PER LIGO SPEC E1000083-V4.

REV.	DATE	DCN #	DRAWING TREE #
v1	18 NOV 2010	E1000736-v1	-
-	-	-	-
-	-	-	-

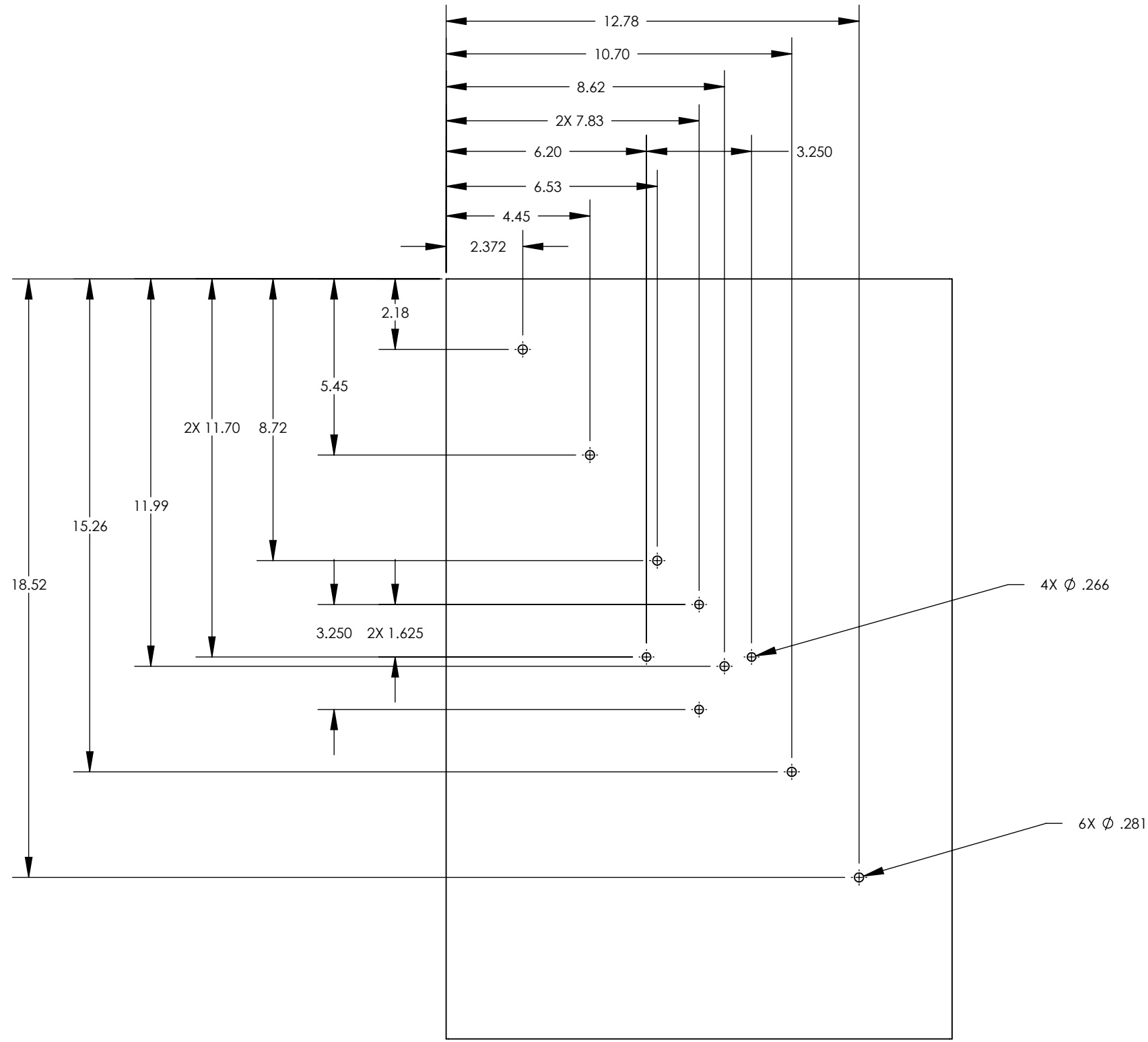


NOTES AND TOLERANCES: (UNLESS OTHERWISE SPECIFIED)	
DIMENSIONS ARE IN	1. INTERPRET DRAWING PER ASME Y14.5-1994.
TOLERANCES:	2. REMOVE ALL SHARP EDGES, R.02 MIN.
.XX ± .01	3. DO NOT SCALE FROM DRAWING.
.XXX ± .015	4. ALL MACHINING FLUIDS MUST BE FULLY SYNTHETIC, FULLY WATER SOLUBLE AND FREE OF SULFUR, SILICONE, AND CHLORINE.
ANGULAR ± .5°	
MATERIAL	FINISH
A424 TYPE I, 18GA, SSTL	SEE NOTE 7

CALIFORNIA INSTITUTE OF TECHNOLOGY MASSACHUSETTS INSTITUTE OF TECHNOLOGY		PART NAME ITM Elliptical Baffle Upper Cap Skin	
SYSTEM ADVANCED LIGO	SUB-SYSTEM AOS	DESIGNER MRuiz	DATE 09 Nov 2010
NEXT ASSY D1002750	SIZE B	DWG. NO. D1002765	REV. v1
SCALE: 1:4		PROJECTION:	
SHEET 1 OF 2			

8 7 6 5 4 3 2 1

D1002765_AdLIGO_AOS_ITM Elliptical Baffle Upper Cap Skin, PART PDM REV: X-020, DRAWING PDM REV: X-018



LIGO CALIFORNIA INSTITUTE OF TECHNOLOGY
MASSACHUSETTS INSTITUTE OF TECHNOLOGY

SIZE	DWG. NO.	REV.
B	D1002765	v1
SCALE: 1:4	PROJECTION:	SHEET 2 OF 2