

A

B

C

D

E

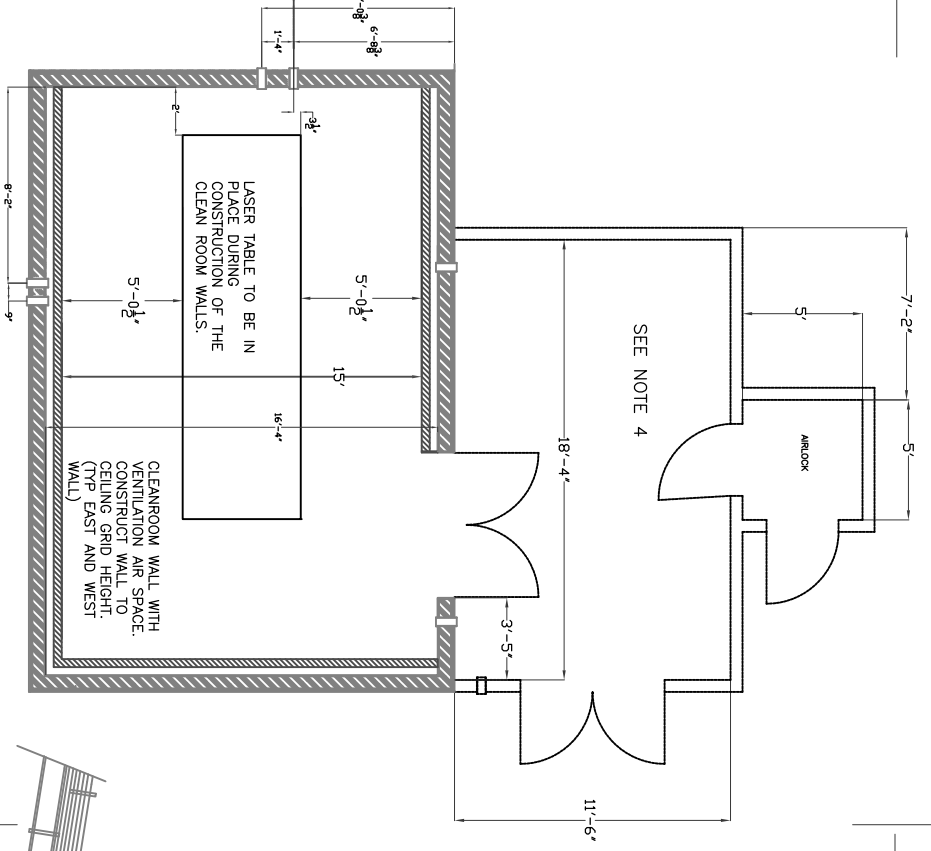
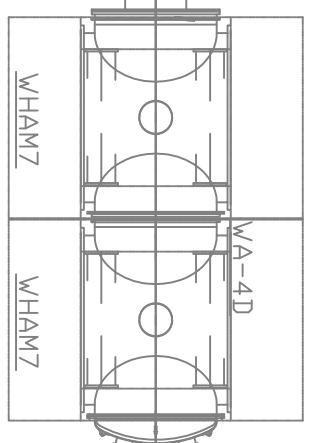
F

G

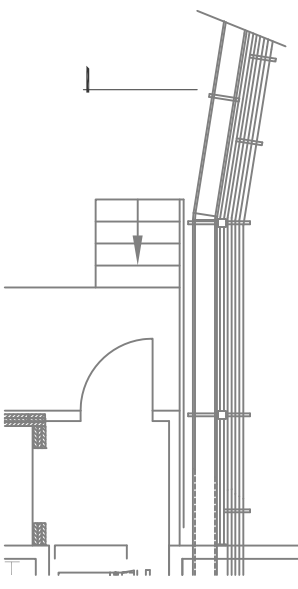
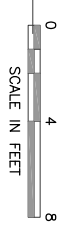
1 2 3 4 5 6 7 8 9 10

NOTES:

1. ALL WORK SHALL CONFORM TO THE LATEST EDITION OF THE FOLLOWING CODES AND GUIDELINES (OR AS DIRECTED BY GOVERNING AGENCIES WITHIN JURISDICTION):
IBC (INTERNATIONAL BUILDING CODE)
UMC (UNIFORM MECHANICAL CODE)
UPC (UNIFORM PLUMBING CODE)
NEC (NATIONAL ELECTRIC CODE)
2. CONTRACTOR IS RESPONSIBLE FOR VERIFICATION OF SITE CONDITIONS, INSTALLATION STANDARDS AND CONSTRUCTION CONDITIONS, DISCREPANCIES BETWEEN SITE CONDITIONS AND THE CONSTRUCTION DRAWINGS SHALL BE CALLED TO THE ATTENTION OF THE ARCHITECT/ENGINEER. WORK DONE WITHOUT THE ARCHITECT/ENGINEER'S APPROVAL IS THE RESPONSIBILITY OF THE CONTRACTOR.
3. CONTRACTOR ALONE SHALL BE RESPONSIBLE FOR SAFETY. CONTRACTOR SHALL PROVIDE ADEQUATE SAFEGUARDS, SAFETY DEVICES AND PROTECTIVE EQUIPMENT AND TAKE ANY OTHER NEEDED ACTIONS NECESSARY TO PROTECT THE LIFE, HEALTH AND SAFETY OF THE PUBLIC AND TO PROTECT PROPERTY IN CONNECTION WITH THE PERFORMANCE OF THE WORK COVERED BY THE CONTRACT.
4. LOCATION OF THE ANTE-ROOM IS BASED ON THE LOCATION OF THE LAE SOUND ENCLOSURE. WALL THICKNESS IS SHOWN AS 6". ACTUAL WALL THICKNESS MAY VARY ACCORDING TO SUPPLIERS DIMENSIONS. THE INTERIOR DIMENSIONS SHALL BE MAINTAINED.
5. CLEANLINESS MUST BE MAINTAINED THROUGHOUT CONSTRUCTION. MAKE MATERIAL CUTS OUTSIDE OF LVEA.

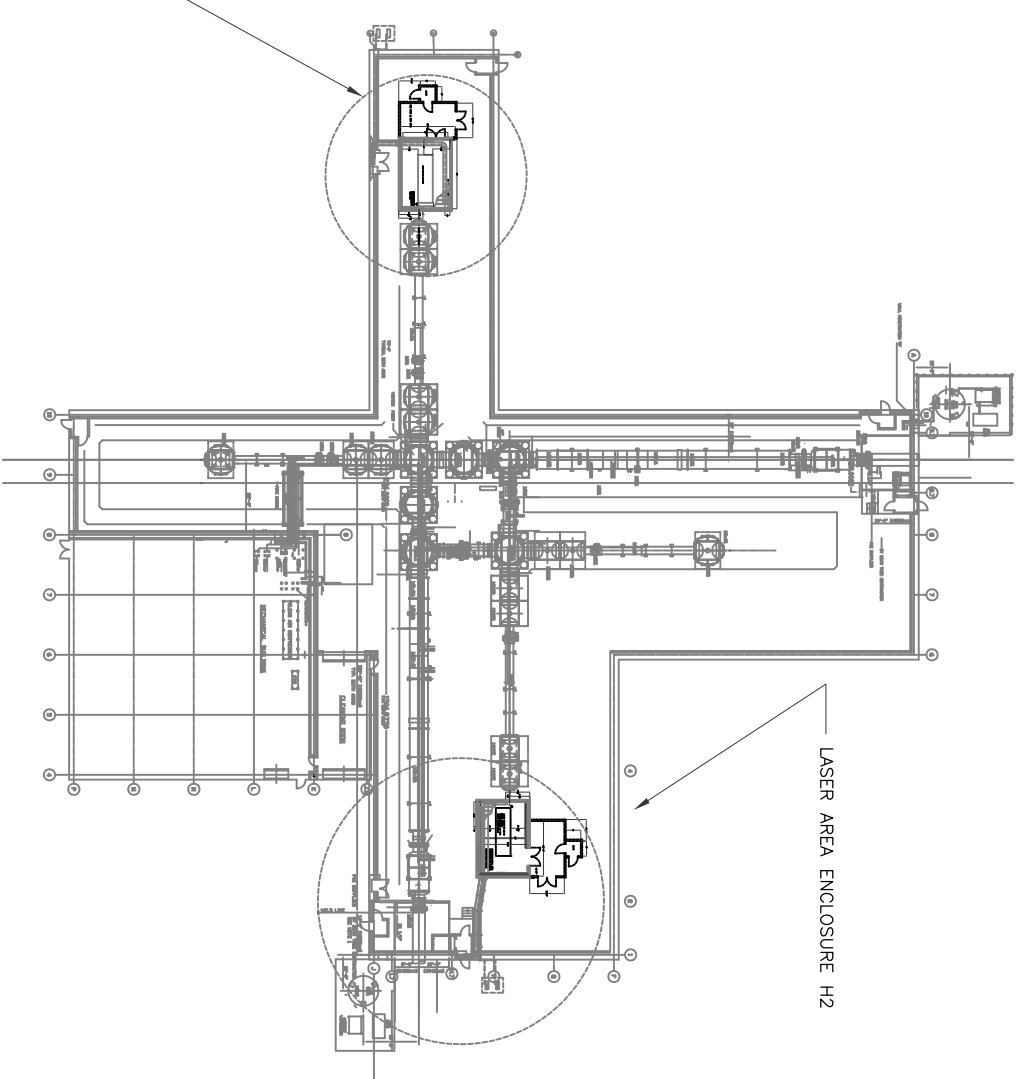


H2 AREA PLAN VIEW
SCALE: 1/4" = 1'-0"



LASER AREA ENCLOSURE
H1

LVEA AREA PLAN VIEW
SCALE: NONE



DRAWING: LIGO- D1002781

PRINTED BY: GI on 11/4/2010 5:24 PM

DRAWING NUMBER	2781
REV	V2

CALIFORNIA INSTITUTE OF TECHNOLOGY
LIGO HANFORD OBSERVATORY
HIBBS ENGINEERING, INC.
KENNEWICK, WASHINGTON

H2 LASER AREA ENCLOSURE ANTE-ROOM PLAN
PROJECT NUMBER: 1036.01 CAD FILE: 1036H1

© 2010 Hibbs Engineering, Inc.
DRAWN BY: GLH
CHECKED BY: DESIGN A/E DESIGN GM
HEI APPROVAL

DATE OF ISSUE				
REV No	DATE	BY	DESCRIPTION	APPROVED
v2	11/3/10	GLH	UPDATED KEY PLAN, INCREASE ROOM LENGTH	