

L190-E980566-00.D

INITIATOR BW

DATE 9-19-98

Post-It* Fax Note	7671	Date	9-21-98	# of pages	5
To	MIKE FINE	From	J. THOMPSON		
Co./Dept.		Co			
Phone #		Phone #			
Fax #		Fax #			

NEXT ASSEMBLY NO. _____
 CUSTOMER DRAWING NO. D972001
 DRAWING TITLE BSC TOP ASSY
 REVISION: FROM OI TO A



HYTEC
INCORPORATED

DESCRIPTION OF CHANGE (Simple Phrase. Identify Dims if Possible):

QTY = 48
 ① Change Item 30 to 4" LG. ② Item 25 to be 2.0 LG. ③ Delete item 28. Add note to use hardware supplied with vacuum chamber ④ add spherical bearing between crossbeam + air bearing ⑤ Item 24 to be 3" LG.
 ⑥ Screws from air bearing to Form X to be 1/2-20x1.75 ⑦ ADD heavy duty washer to hold adapter plate clamp Barnhill PN 318-12-A-01 or equiv.

REASONS FOR CHANGE:

①②④⑤⑥ Correct Eng ③ Reduce cost ⑦ Reduce deflection of adapter plate clamp.

IDENTIFY OTHER PARTS/GROUPS THAT INTERFACE WITH THE ABOVE (Required):

INTERFACE	RESPONSIBLE PARTY	INITIAL

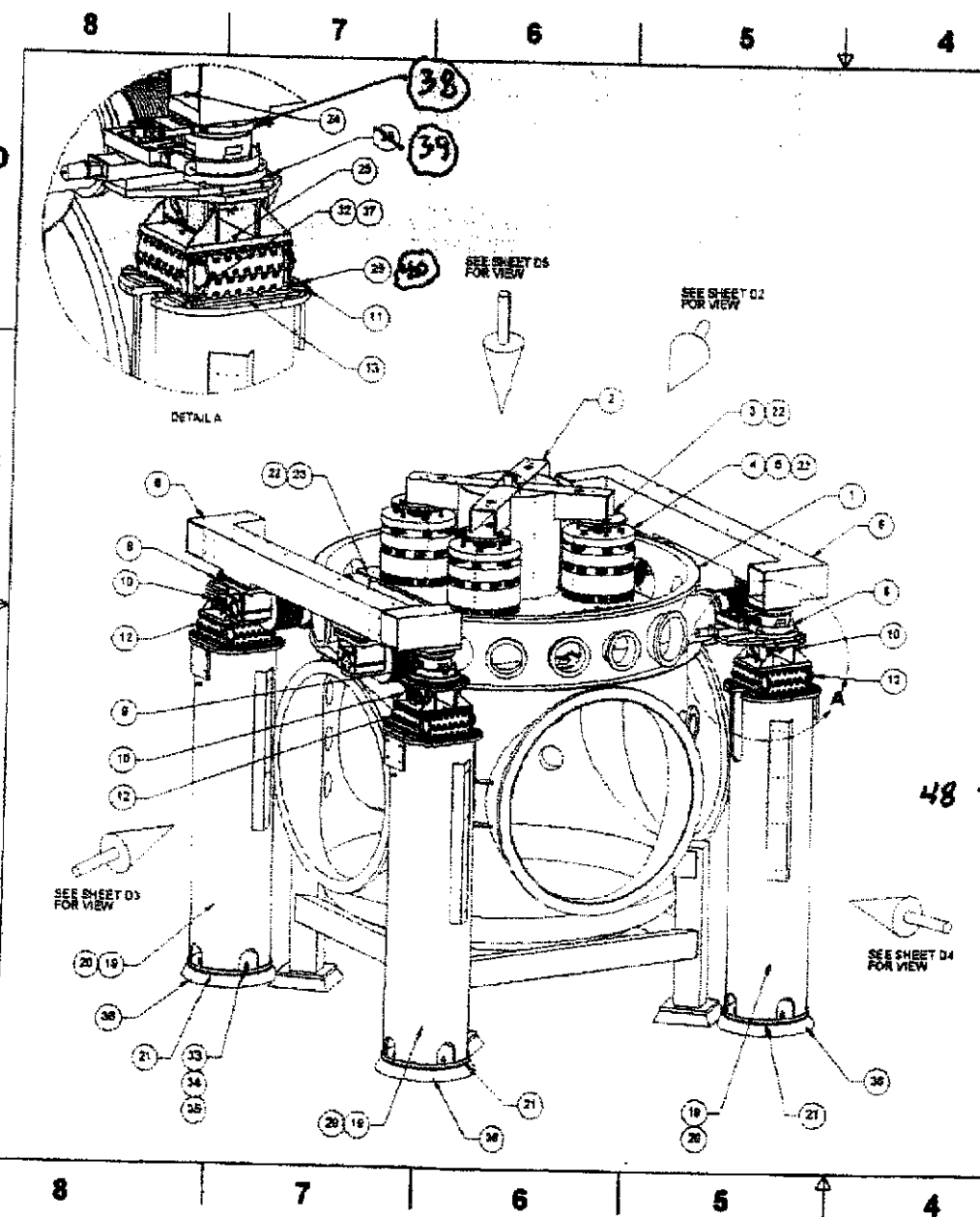
NOTIFY COGNIZANT DESIGNER: Roger

NOTIFY COGNIZANT ENGINEER: Tim

APPROVED: [Signature]

Submitted

9/21/98



REV	DESCRIPTION	DATE	BY	CHKD

- ① ASSEMBLY FOR HANFORD
- ② ASSEMBLY FOR LIVINGSTON

BARNHILL 318-22-A-01
OFF ERUK

40 16 16 WASHER, 1/2" NYNY DUTY
 39 16 16 SOC HD SCREW 1/2-20 UNF-3A x 1.75
 38 4 4 09721421 SPHERICAL MTC PAD

ITEM NO	QTY	QTY	PART NO	DESCRIPTION
1	1	1	0972110-1	SEC CHANGE
2	1	1	0972110-1	ADAPTOR / SUPPORT TABLE ASSEMBLY
3	13	13	0972110-1	ADAPTOR / SUPPORT TABLE ASSEMBLY
4	4	4	0972110-1	ADAPTOR / SUPPORT TABLE ASSEMBLY
5	12	12	0972110-1	ADAPTOR / SUPPORT TABLE ASSEMBLY
6	2	2	0972110-1	ADAPTOR / SUPPORT TABLE ASSEMBLY
7	12	12	0972110-1	ADAPTOR / SUPPORT TABLE ASSEMBLY
8	2	2	0972110-1	ADAPTOR / SUPPORT TABLE ASSEMBLY
9	2	2	0972110-1	ADAPTOR / SUPPORT TABLE ASSEMBLY
10	4	4	0972110-1	ADAPTOR / SUPPORT TABLE ASSEMBLY
11	16	16	0972110-1	ADAPTOR / SUPPORT TABLE ASSEMBLY
12	4	4	0972110-1	ADAPTOR / SUPPORT TABLE ASSEMBLY
13	4	4	0972110-1	ADAPTOR / SUPPORT TABLE ASSEMBLY
14	4	4	0972110-1	ADAPTOR / SUPPORT TABLE ASSEMBLY
15	4	4	0972110-1	ADAPTOR / SUPPORT TABLE ASSEMBLY
16	4	4	0972110-1	ADAPTOR / SUPPORT TABLE ASSEMBLY
17	4	4	0972110-1	ADAPTOR / SUPPORT TABLE ASSEMBLY
18	4	4	0972110-1	ADAPTOR / SUPPORT TABLE ASSEMBLY
19	4	4	0972110-1	ADAPTOR / SUPPORT TABLE ASSEMBLY
20	4	4	0972110-1	ADAPTOR / SUPPORT TABLE ASSEMBLY
21	4	4	0972110-1	ADAPTOR / SUPPORT TABLE ASSEMBLY
22	4	4	0972110-1	ADAPTOR / SUPPORT TABLE ASSEMBLY
23	4	4	0972110-1	ADAPTOR / SUPPORT TABLE ASSEMBLY
24	4	4	0972110-1	ADAPTOR / SUPPORT TABLE ASSEMBLY
25	4	4	0972110-1	ADAPTOR / SUPPORT TABLE ASSEMBLY
26	4	4	0972110-1	ADAPTOR / SUPPORT TABLE ASSEMBLY
27	4	4	0972110-1	ADAPTOR / SUPPORT TABLE ASSEMBLY
28	4	4	0972110-1	ADAPTOR / SUPPORT TABLE ASSEMBLY
29	4	4	0972110-1	ADAPTOR / SUPPORT TABLE ASSEMBLY
30	4	4	0972110-1	ADAPTOR / SUPPORT TABLE ASSEMBLY
31	4	4	0972110-1	ADAPTOR / SUPPORT TABLE ASSEMBLY
32	4	4	0972110-1	ADAPTOR / SUPPORT TABLE ASSEMBLY
33	4	4	0972110-1	ADAPTOR / SUPPORT TABLE ASSEMBLY
34	4	4	0972110-1	ADAPTOR / SUPPORT TABLE ASSEMBLY
35	4	4	0972110-1	ADAPTOR / SUPPORT TABLE ASSEMBLY
36	4	4	0972110-1	ADAPTOR / SUPPORT TABLE ASSEMBLY
37	4	4	0972110-1	ADAPTOR / SUPPORT TABLE ASSEMBLY
38	4	4	09721421	SPHERICAL MTC PAD
39	16	16	0972110-1	ADAPTOR / SUPPORT TABLE ASSEMBLY
40	16	16	0972110-1	ADAPTOR / SUPPORT TABLE ASSEMBLY

UNLESS OTHERWISE SPECIFIED DIMENSIONS ARE IN INCHES		CAD GENERATED DRAWING DO NOT MANUALLY EDIT OR NOT SCALE DRAWING		HYTEC, INC LIG BSC TOP ASSEMBLY	
DATE: 09/21/98	BY: J. BOYD	DATE: 09/21/98	BY: J. BOYD	REV: 1	REV: 1
PART NO: 0972001-1		REV: 1		REV: 1	
DATE: 09/21/98		DATE: 09/21/98		DATE: 09/21/98	

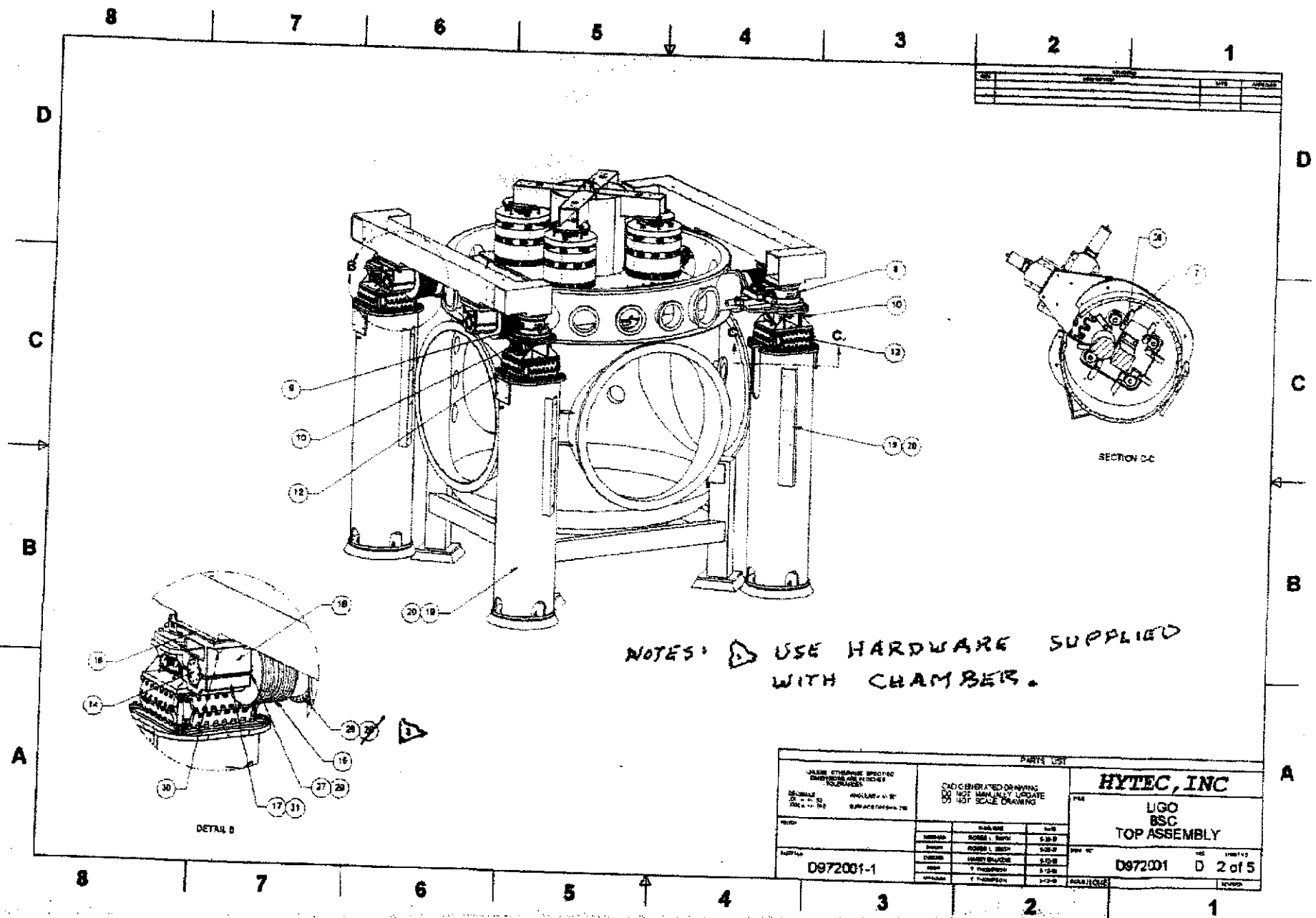
D

C

B

A

REV	DESCRIPTION	DATE	APP'D



NOTES: USE HARDWARE SUPPLIED WITH CHAMBERS.

VALUE STRIKE SPECIFIC DIMENSIONS ARE IN INCHES UNLESS NOTED		CAD GENERATED DRAWING DO NOT MANUALLY UPDATE OR 1/31 SCALE DRAWING		HYTEC, INC LIGO BSC TOP ASSEMBLY	
MODEL NO. 0972001-1 REV. 001	ANGLE: 45° SURFACE FINISH: 125	MATERIAL: 304 SS DIMENSIONS: 1.500" x 1.500" x 1.500"	DATE: 09/21/98 DRAWN BY: T. THOMPSON CHECKED BY: T. THOMPSON	PARTS LIST QTY: 1 PART NO: 0972001-1	SHEET NO: D 2 of 5