

DATE 9-16-98

L190-E980572-00-D

ENGINEERING CHANGE REQUEST (ECR)

NEXT ASSEMBLY NO. _____

CUSTOMER DRAWING NO. ~~972501~~ 972501 & 972701

DRAWING TITLE HAM Isolation Stack Leg Assembly

REVISION: FROM C TO D



HYTEC
INCORPORATED

DESCRIPTION OF CHANGE (Simple Phrase, Identify Draw if Possible):

Add D97216 (Custom vented washer, see attached)
to item #3 on 972701 & Item #9 on 972501

REASONS FOR CHANGE:

Safety lenses are not long enough

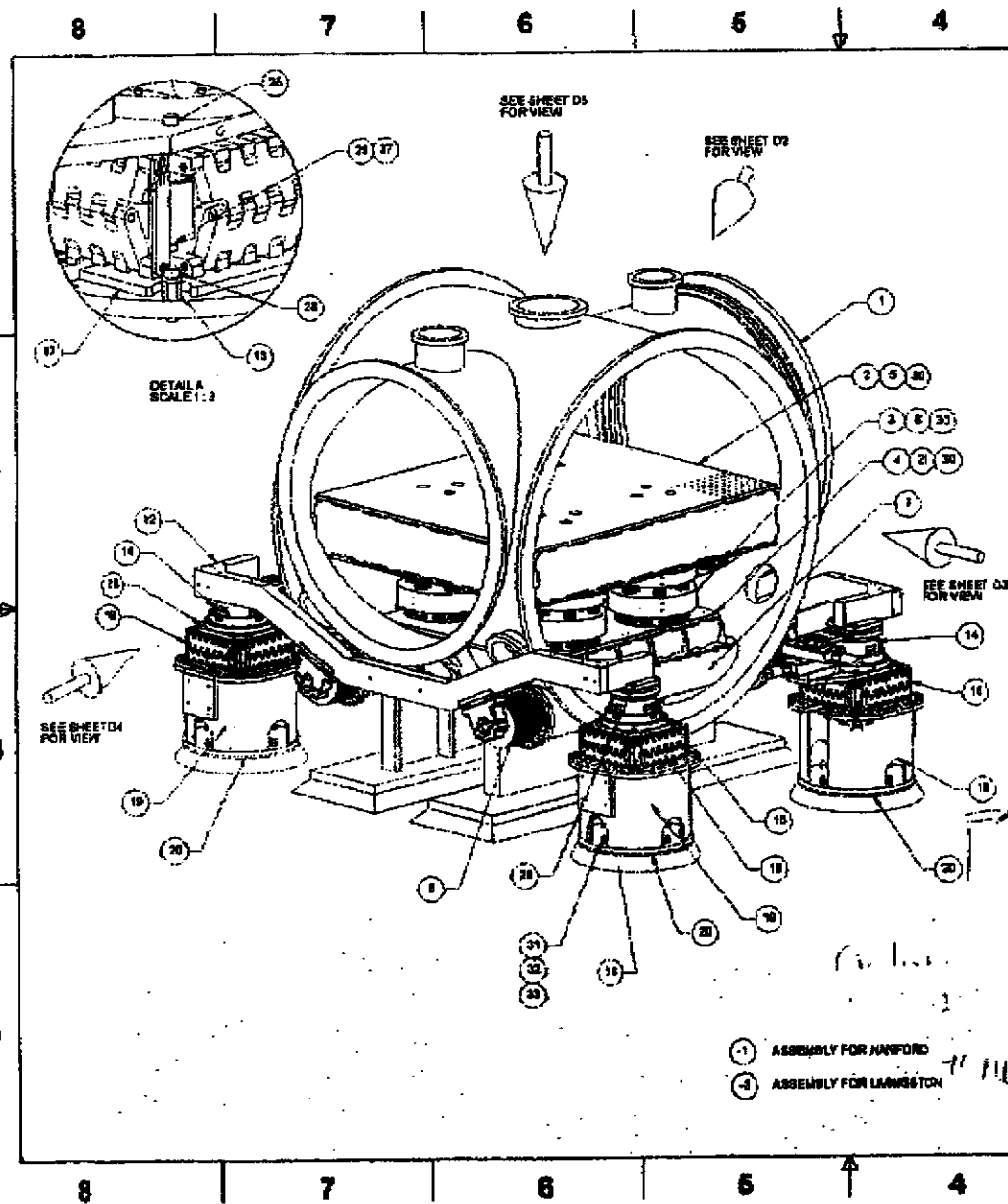
IDENTIFY OTHER PARTS/GROUPS THAT INTERFACE WITH THE ABOVE (Required):

INTERFACE	RESPONSIBLE PARTY	INITIAL

NOTIFY COGNIZANT DESIGNER: Roger

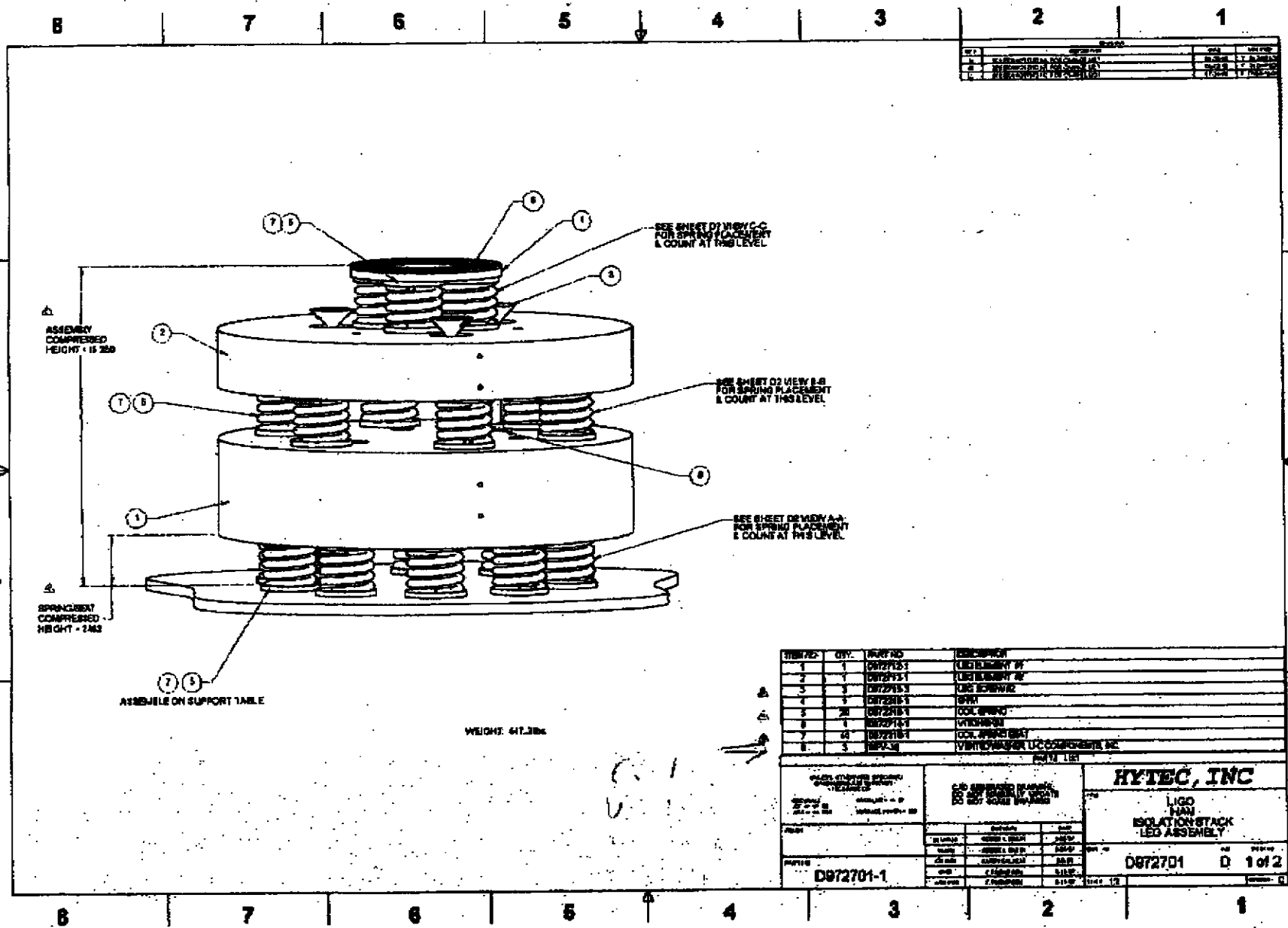
NOTIFY COGNIZANT ENGINEER: Tim, Eric

APPROVED: [Signature]



ITEM NO.	QTY.	QTY.	PART NO.	DESCRIPTION
1				HAM CHAMBER
2	1	1	D97276-1	OPTICAL YABLE
3	4	4	D97209-1	ISOLATION STACK LEG ASSEMBLY
4	1	1	D97211-1	SUPPORT TABLE WELDMENT
5	12	12	D97275-3	ISOLATION STACK LEG SCREW #2
6	12	12	D97275-1	ISOLATION STACK SAFETY PIN
7	2	2	D97261-1	SUPPORT TUBE WELDMENT
8	4	4	D97261-1	EXPANSION BELLOWS
9	4	4	D97261-1	SUPPORT TUBE MOUNTING CAP
10	4	4	D97261-1	SUPPORT TUBE MOUNTING BASE
11	4	4	D97261-1	CYRICAL BUSHING
12	2	2	D97261-1	CROSSBOW WELDMENT
13	18	18	D97213-1	PERIPLATE ADAPTOR MOUNTING CLAMP
14	2	2	D97210-1	COARSE X-Y DRIVE TRANSLATION ASSEMBLY
15	2	2	D97210-1	COARSE X-Y FLOATING TRANSLATION ASSEMBLY
16	4	4	D97201-1	SCISSOR TABLE ASSEMBLY
17	4	4	D97261-1	PERIPLATE ADAPTOR
18	AR	AR		GROUT
19	8	8	D97261-1	SUPPORT PERIPLATE
20	8	8	D97261-1	SUPPORT PERIPLATE
21	4	4	D97213-1	PERIPLATE & GROUT PLATE
22	18	18		SOCDHST VERMED SCREW, 3/8-24 UNF-2A X 1.25 LG
23	4	4	REC # 191025	COPPER GASKET
24	120	120	REC # 190013	SOCDHST SCREW, 1/8-24 UNC-2A X 2.0 LG
25	4	4	REC # 191011	COPPER GASKET
26	84	84		SOCDHST SCREW, 6/16-24 UNF-2A X 1.5 LG
27	15	15		SOCDHST SCREW, 1/2-20 UNF-2A X 3.0 LG
28	16	16		SOCDHST SCREW, 1/2-20 UNF-2A X 4.0 LG
29	32	32		SOCDHST SCREW, 1/2-13 UNC-2A X 2.25 LG
30	18	18		SOCDHST SCREW, 3/8-16 UNC-2A X 1.50 LG
31	42	42	NPU-34	UPPER WASHER/UC COMPONENTS INC
32	18	18	808-31-512	GASPER BODY THREADED ANCHOR, 3/4-16 UNC-2A WITH 4 P THERO LENGTH
33	18	18		NUT, 3/4-16 UNC-28
34	18	18		FLAT WASHER 3/4
35	18	18		SOCDHST SCREW, 1/4-20 UNC-2A X 1.25 LG
36	32	32	D97214-1	SCISSOR TABLE MOUNTING CLAMP
37	32	32		SOCDHST SCREW, 3/2-15 UNC-2A X 3.3 LG
38	18	18		FLAT WASHER 3/8
DASH B	-1	-1		

<p>HYTEC, INC</p> <p>LIGO HAM TOP ASSEMBLY</p> <p>D972501 D 1 of 5</p>	
<p>DATE: 09/20/98</p> <p>BY: [Signature]</p> <p>APP: [Signature]</p>	<p>DATE: 09/20/98</p> <p>BY: [Signature]</p> <p>APP: [Signature]</p>



REV	DESCRIPTION	DATE	BY
1	ISSUED FOR CONSTRUCTION	08/28/98	J. J. [unclear]
2	ISSUED FOR CONSTRUCTION	08/28/98	J. J. [unclear]

ITEM NO.	QTY	PART NO.	DESCRIPTION
1	1	D072701-1	LEAD ASSEMBLY #1
2	1	D072701-2	LEAD ASSEMBLY #2
3	3	D072701-3	LEAD SCREW#2
4	1	D072701-4	SPW
5	20	D072701-5	COIL SPRING
6	1	D072701-6	WASHER
7	40	D072701-7	COIL SPRING#1
8	3	D07-3	WASHER FOR UCC COMPRESSIVE KIT

HYTEC, INC LIGO HAM ISOLATION STACK LED ASSEMBLY	
PART NO: D072701-1 REV: 1	Dwg No: D072701 Title: LIGO HAM ISOLATION STACK LED ASSEMBLY