



DOCUMENT CHANGE NOTICE (DCN)

DOCUMENT No. (DOC-REV-GP. ID)	TITLE	NEW REV.
D990143-B	Cavity Beam Dump Mounting Bracket Assembly	C

CHANGE DESCRIPTION (FROM/TO):

Changed Next Ass'y block entry from "D990145" to "D990230".

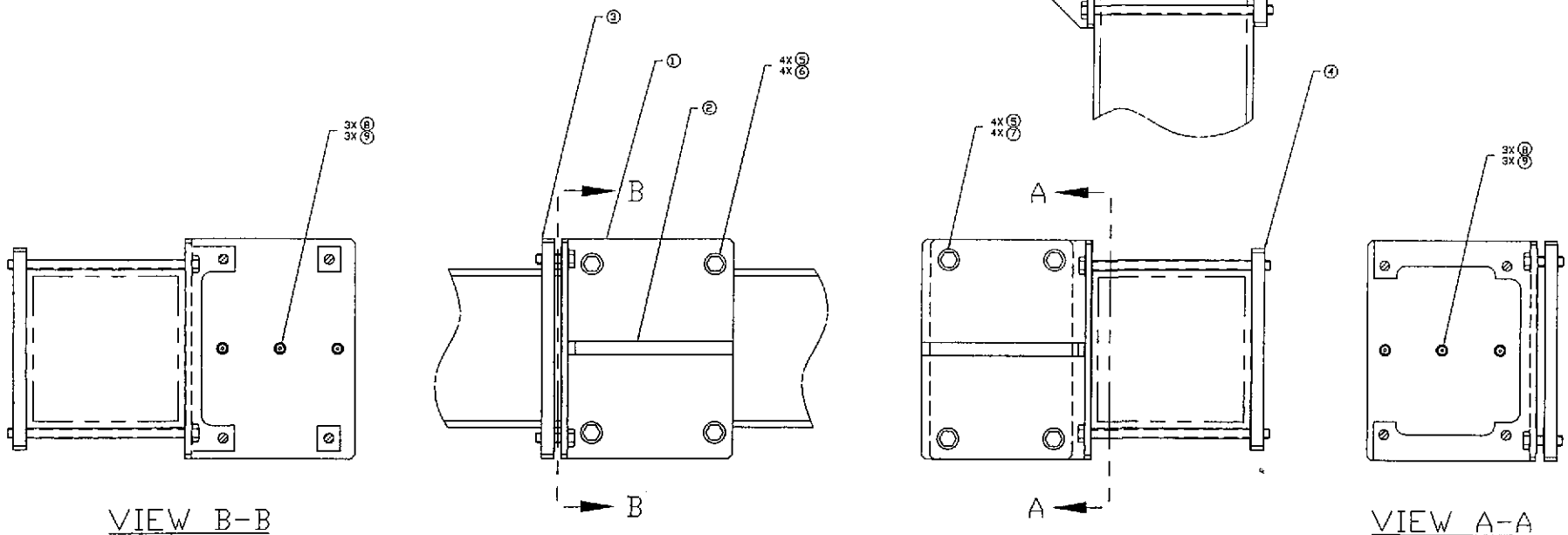
ACTION: Incorporate change Attach DCN to drawing(s) Other action (specify):

DISPOSITION OF HARDWARE (IDENTIFY SERIAL NUMBERS)	DCN DISTRIBUTION (X=incl. docs)
<input type="checkbox"/> No hardware affected (record change only)	Althouse Barish Coles
<input type="checkbox"/> List S/Ns which comply already:	X Coyne Lazzarini Lindquist
<input type="checkbox"/> List S/Ns to be reworked or scrapped:	Sanders Shoemaker Stapfer
<input type="checkbox"/> List S/Ns to be built with this change:	Tyler Weiss Whitcomb
<input type="checkbox"/> List S/Ns to be retested per this change:	Camp X Conley
<input type="checkbox"/>	X Jones X Smith
<input type="checkbox"/>	
<input type="checkbox"/>	
<input type="checkbox"/>	

SAFETY, COST, SCHEDULE, REQUIREMENTS IMPACT? No Yes (If yes, enter Change Request number)

APPROVALS:	DATE	OTHER APPROVALS (specify)	DATE
ORIGINATOR: C. Conley	6-8-99		
TASK LEADER: <i>Michael Smith</i>	6/8/99		
GROUP LEADER: <i>Jordan Camp</i>	6/8/99		
DCC RELEASE: <i>Lynda Turner</i>	6-22-99		

NOTES: UNLESS OTHERWISE SPECIFIED
 1. SEE SEPARATE MATERIALS LIST LIGO-D990153.



VIEW B-B

VIEW A-A

		UNLESS OTHERWISE SPECIFIED DIMENSIONS ARE IN INCHES						LIGO DAVIDSON INSTITUTE OF TECHNOLOGY MASSACHUSETTS INSTITUTE OF TECHNOLOGY	
		TOLERANCES: FRACTIONAL ± ANGULAR ± ANGULAR/ROUND ± TWO PLACE DECIMAL ±		THREE PLACE DECIMAL ± FINISHED SURFACE, RNS SEAM CORNERS 1/16" OUT REMOVE ALL BURRS		C DCH E990246 Corsley 6-8-99		Cavity 5-3-99	
		MATERIAL:		HEAT TREAT:		FINISH:		A DCH E990133 Corsley 3-22-99	
REV	DESCRIPTION	ISSUE DESCRIPTION	APPR'D	CHECK	DRWN	DATE	SCALE	3990143-C.dwg	3990143-C
REV. NO.	DESCRIPTION	ISSUE DESCRIPTION							
	REFERENCE DRAWINGS	USED ON:							
		NEXT ASS'Y: D990230							

CAVITY BEAM DUMP
MOUNTING BRACKET ASSEMBLY

3990143-C.dwg
 3990143-C
 1 OF 1