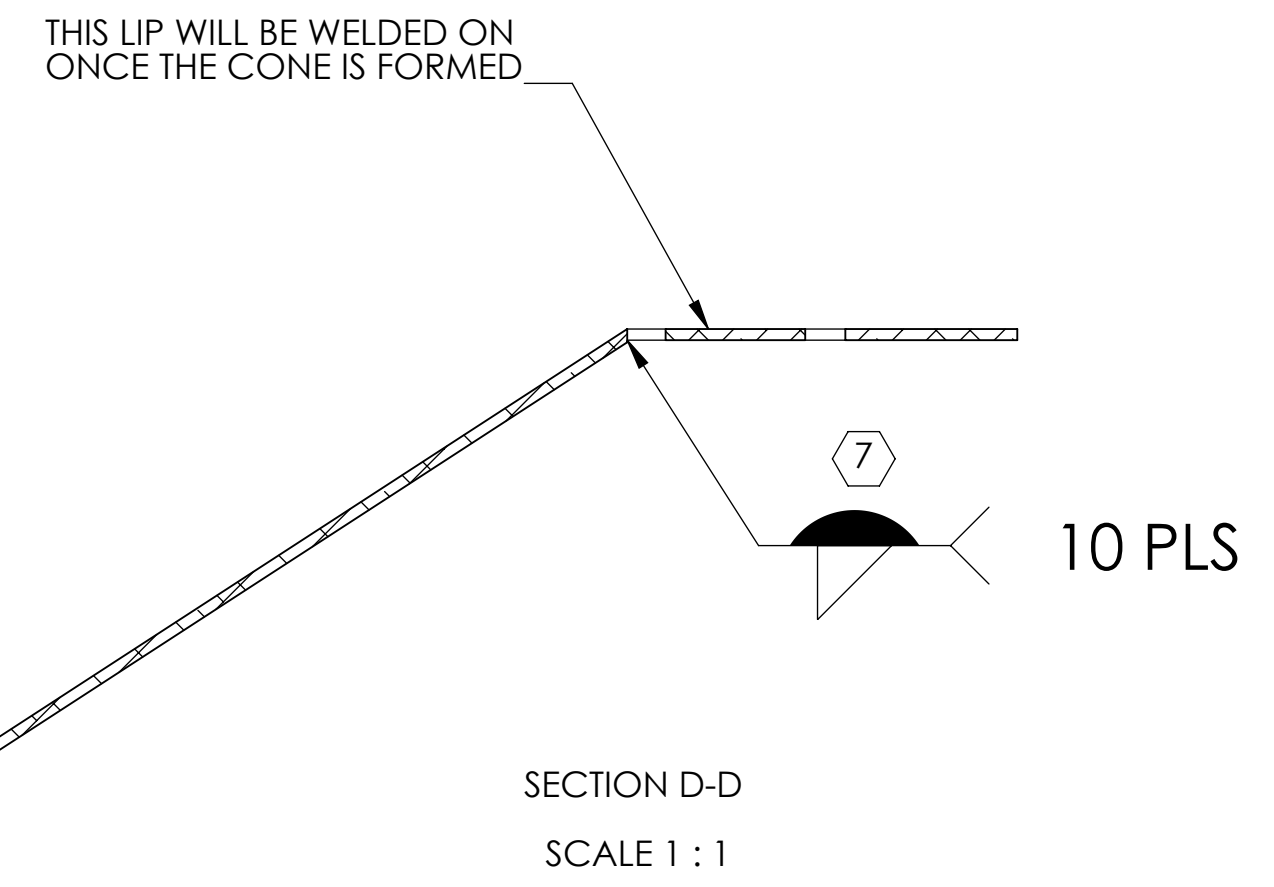
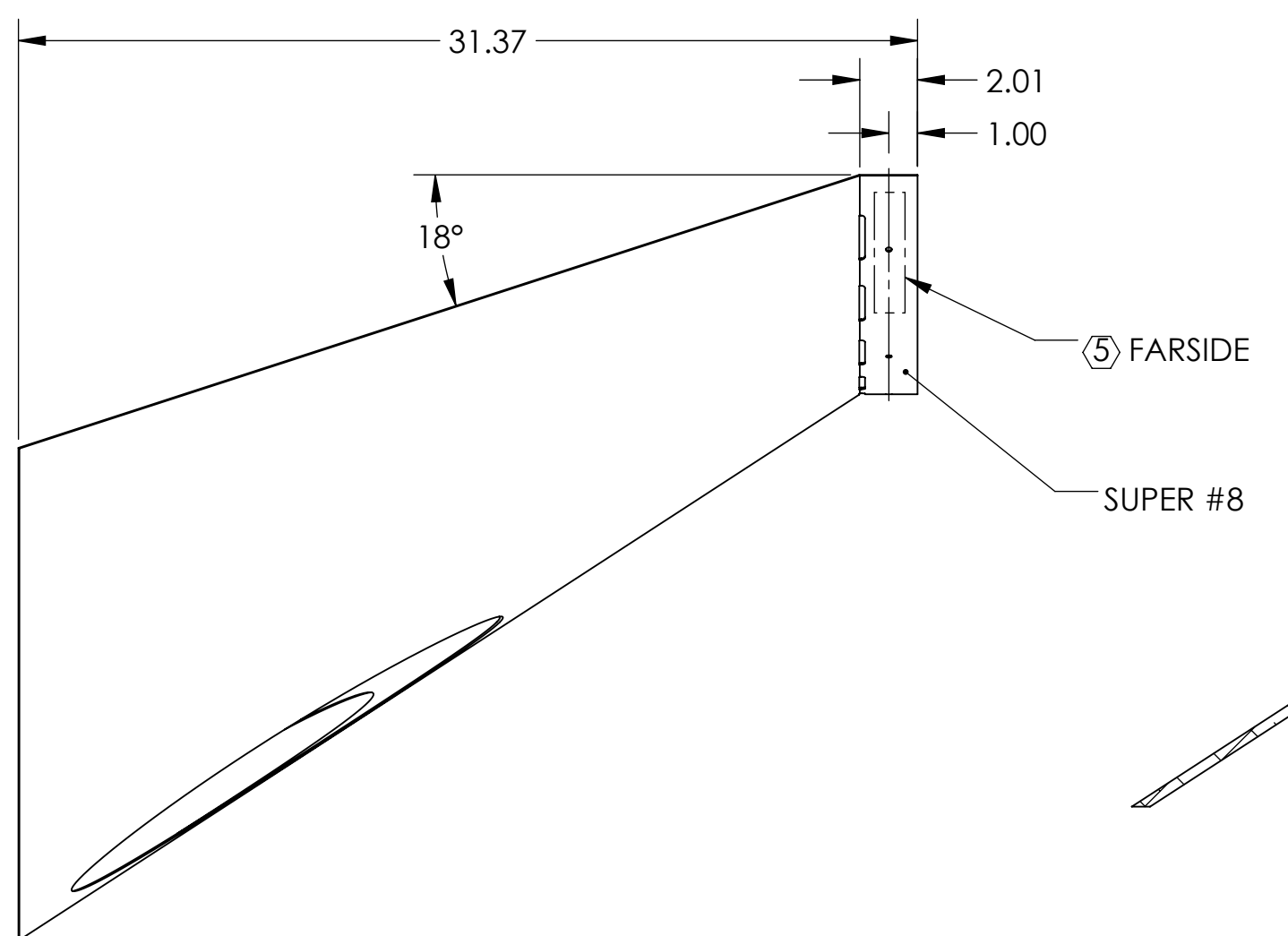
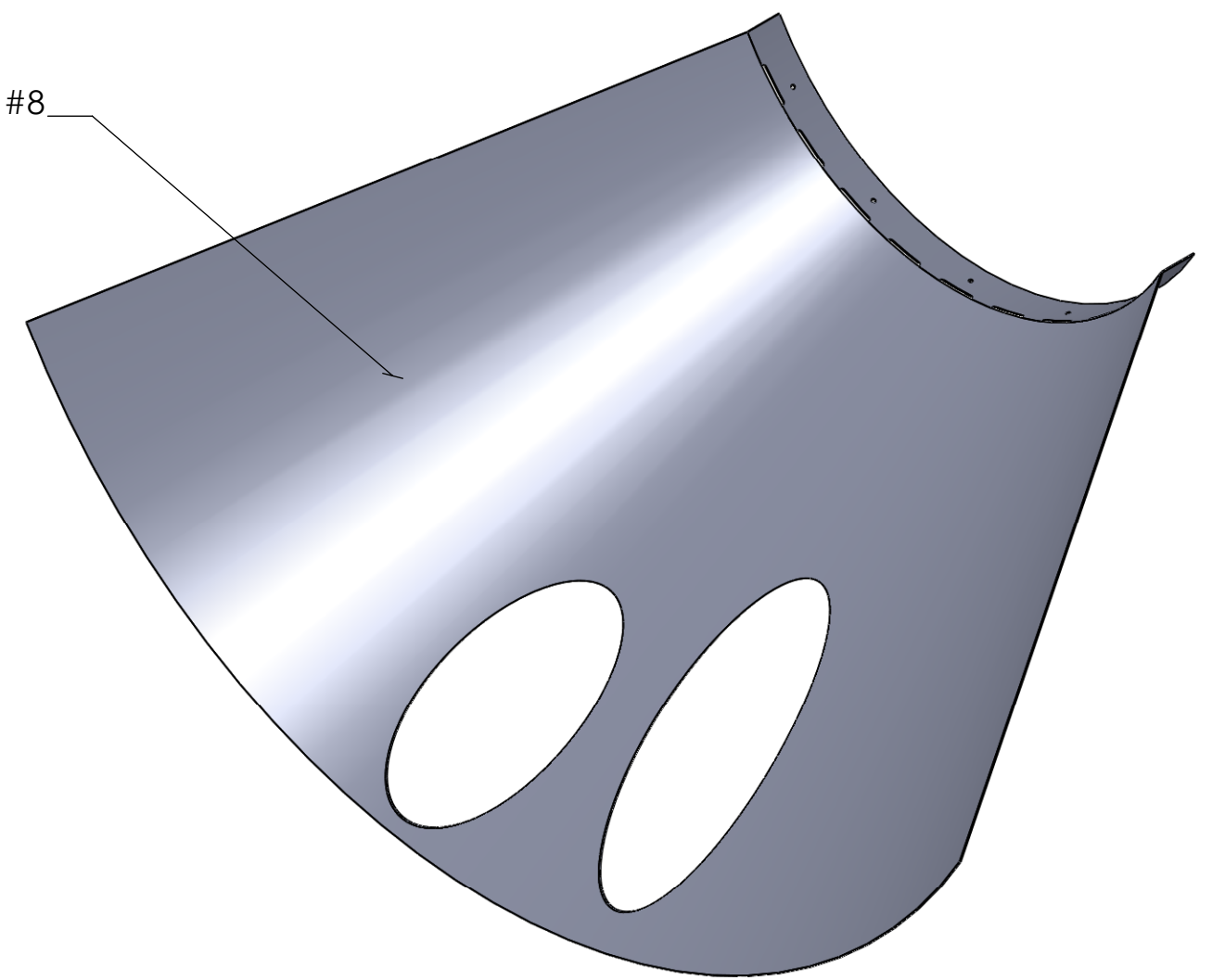
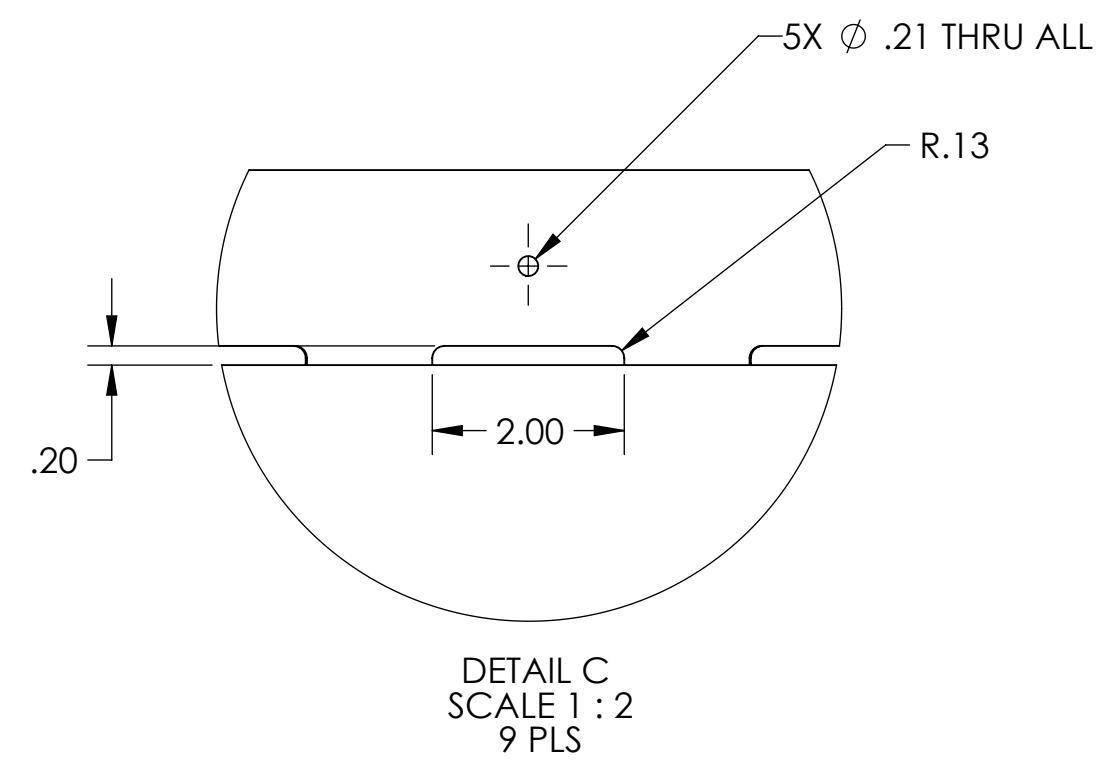
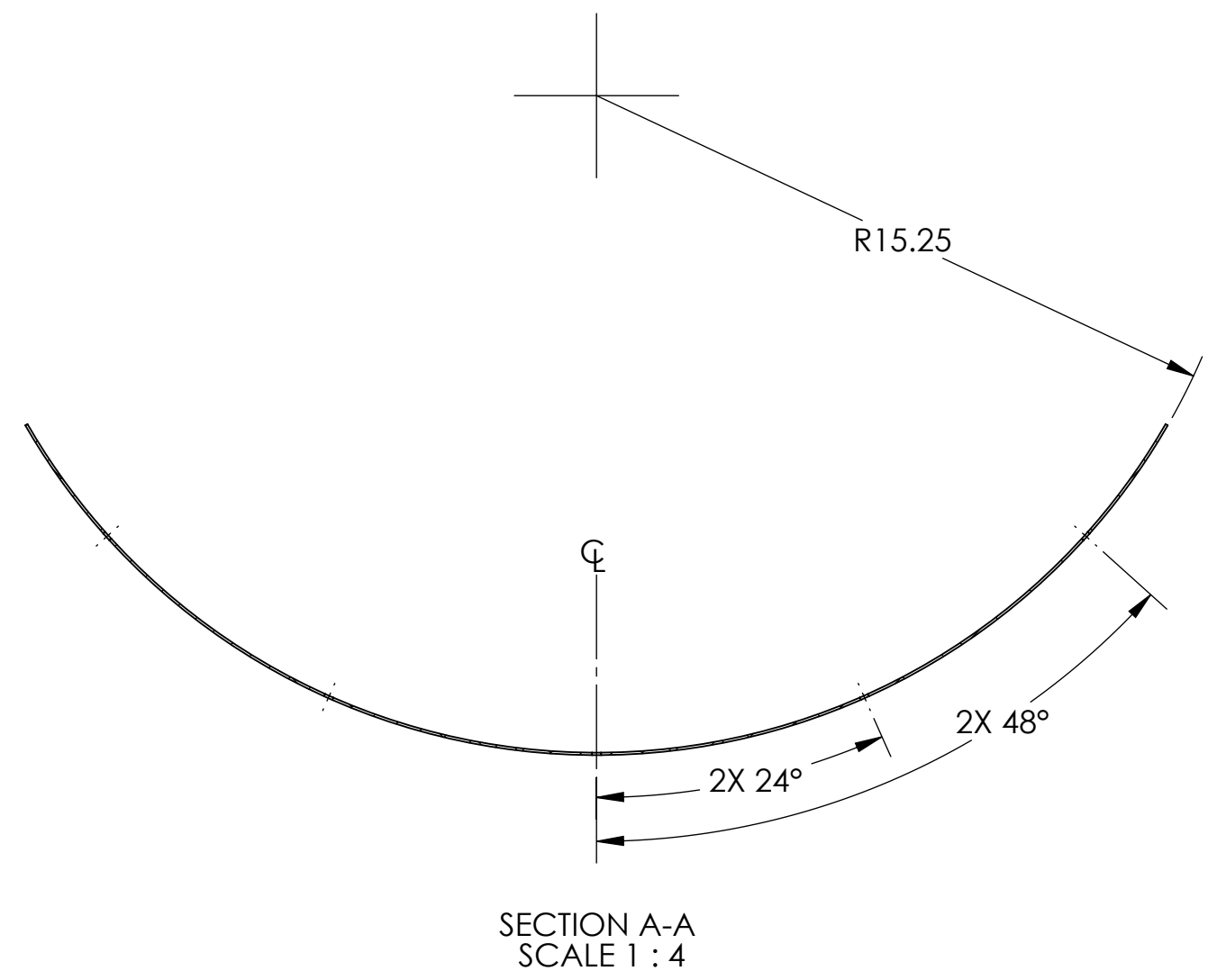
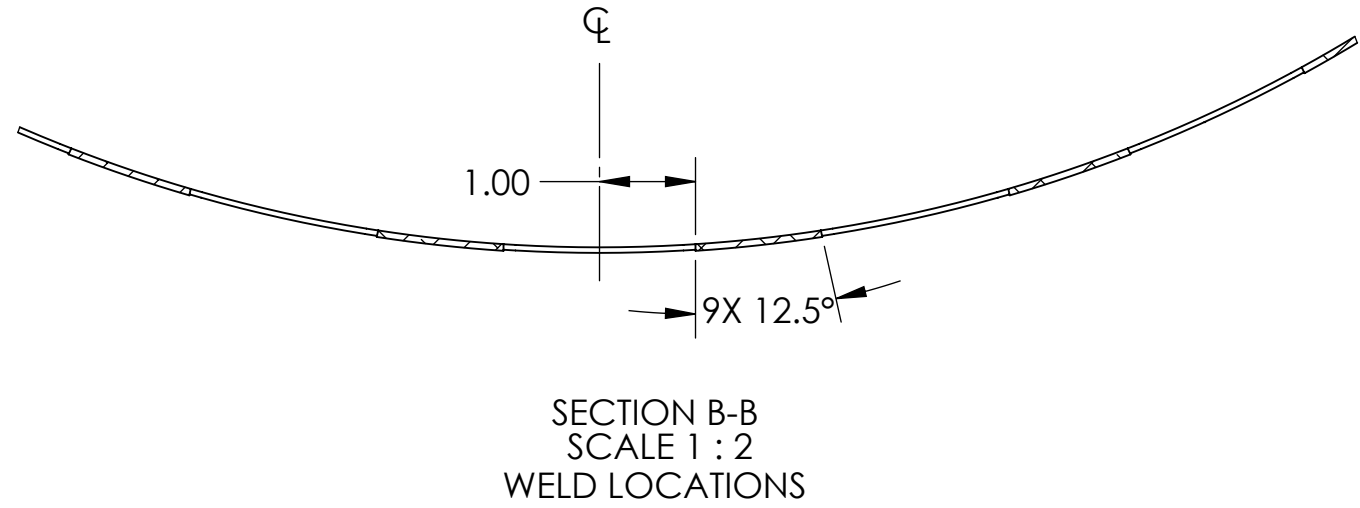
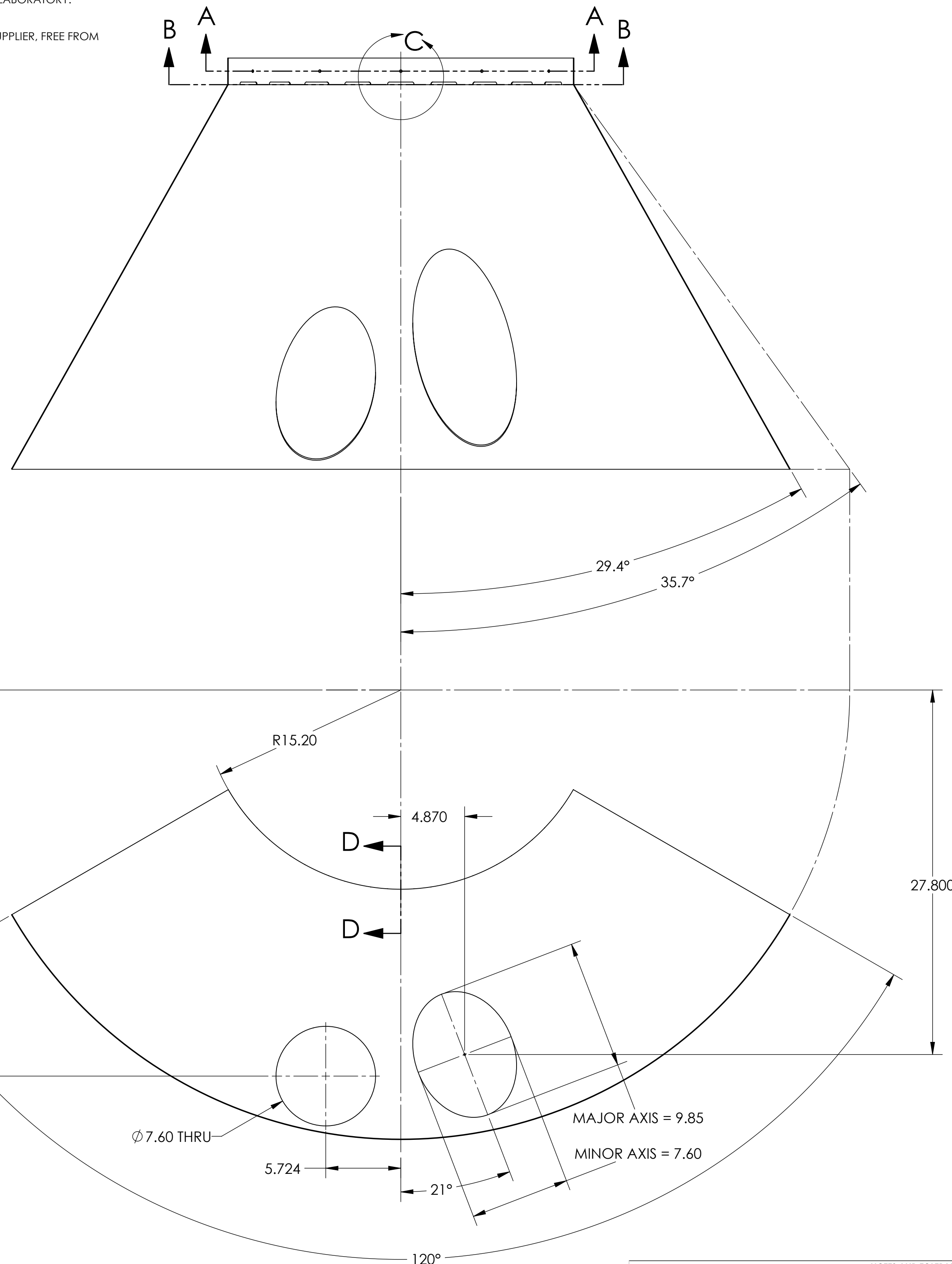


- NOTES CONTINUED:**
- ⑨ SCRIBE, ENGRAVE (A VIBRATORY TOOL MAY BE USED), DO NOT STAMP OR LASER MARK (NO INKS OR DYES) DRAWING PART NUMBER, REVISION (AND VARIANT OR "TYPE" IF APPLICABLE) ON NOTED SURFACE OF PART FOLLOWED ON THE NEXT LINE WITH A THREE DIGIT SERIAL NUMBER. SERIAL NUMBERS START AT 001 FOR THE FIRST ARTICLE AND PROCEED CONSECUTIVELY. USE MINIMUM 0.12" HIGH CHARACTERS, UNLESS THE SIZE OF THE PART DICTATES SMALLER CHARACTERS. EXAMPLE: DXXXXXX-VY, TYPE-XX, S/N XXX DO NOT APPLY MARK ON SUPER #8 SIDE
 - 6. APPROXIMATE WEIGHT = 27.553 LBS.
 - ⑦ CONE AND LIP TO BE WELDED WHERE PIECES MAKE CONTACT. WELDING MUST BE PER SPECIFICATION E0900048.
 - 8. ALL PARTS SHALL BE MANUFACTURED IN ACCORDANCE WITH LIGO SPECIFICATION E0900364.
 - 9. ALL MATERIAL IS TO BE VIRGIN MATERIAL (i.e. NO WELD REPAIRS, PLUGS OR RECYCLED MATERIAL). NO REPAIRS SHALL BE MADE UNLESS APPROVED IN ADVANCE, AND IN WRITING, BY LIGO LABORATORY. REFER TO LIGO-E0900364.
 - ⑩ SURFACE FINISH TO BE AS-PROCESSED FROM MILL/SUPPLIER, FREE FROM SCRATCHES OR GOUGES.

| REV. | DATE | DCN # | DRAWING TREE # |
|------|-------------|-------------|----------------|
| v1 | 7 SEP 2010 | E1000360 | - |
| v2 | 3 APR 2012 | E1000360-v3 | - |
| v3 | 31 OCT 2012 | - | - |



| NOTES AND TOLERANCES: (UNLESS OTHERWISE SPECIFIED) | | CALIFORNIA INSTITUTE OF TECHNOLOGY LIGO MASSACHUSETTS INSTITUTE OF TECHNOLOGY | | PART NAME | |
|---|--|--|--|------------------------------------|--|
| 1. INTERPRET DRAWING PER ASME Y14.5-1994. 2. REMOVE ALL SHARP EDGES, .005-.015, FOR MACHINED PARTS. ROUND ALL EDGES APPROXIMATELY R.02 FOR SHEET METAL PARTS. 3. DO NOT SCALE FROM DRAWING. 4. ALL MACHINING FLUIDS MUST BE FULLY SYNTHETIC, FULLY WATER SOLUBLE AND FREE OF SULFUR, SILICONE, AND CHLORINE. | | SYSTEM ADVANCED LIGO | | SUB-SYSTEM AOS | |
| DIMENSIONS ARE IN INCHES TOLERANCES: .XX ± .03 .XXX ± .010 ANGULAR ± 0.5° | | MATERIAL 18 GAUGE 304 SSTL | | FINISH SUPER #8 | |
| | | NEXT ASSY D1003229 | | DESIGNER TQ. NGUYEN 14 DEC 2010 | |
| | | | | DRAFTER TQ. NGUYEN 3 APR 2012 | |
| | | | | CHECKER L. AUSTIN | |
| | | | | APPROVAL C. TORRIE | |
| | | | | SIZE DWG. NO. D D1003230 | |
| | | | | SCALE: 1:6 PROJECTION: | |
| | | | | REV. v3 | |
| | | | | SHEET 1 OF 1 | |

D:\003230.dwg_Merfield_Cryo_Baffle_Inner_Segment1_ETMY_H1_Bottom_PART_PDM_REV_X-013_DRAWING_PDM_REV_X-008