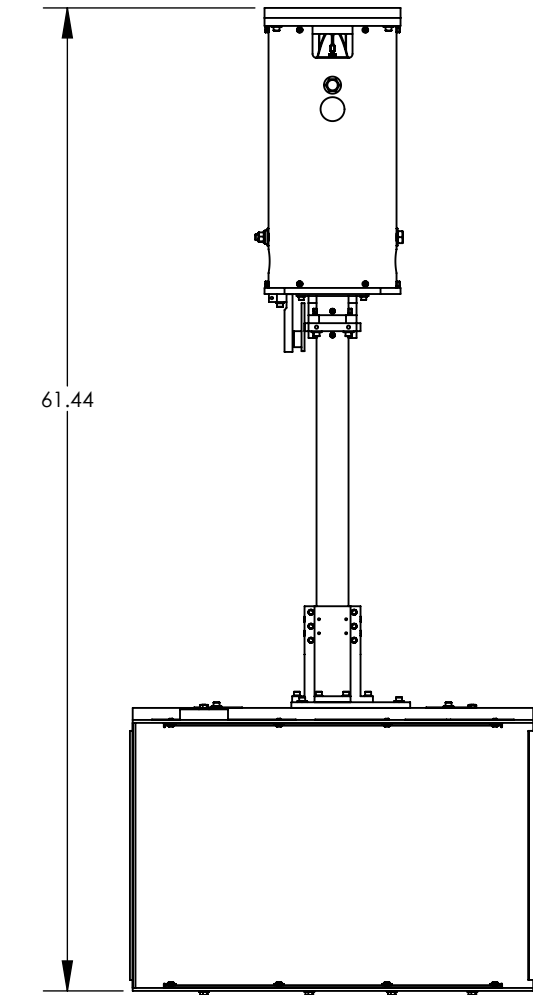
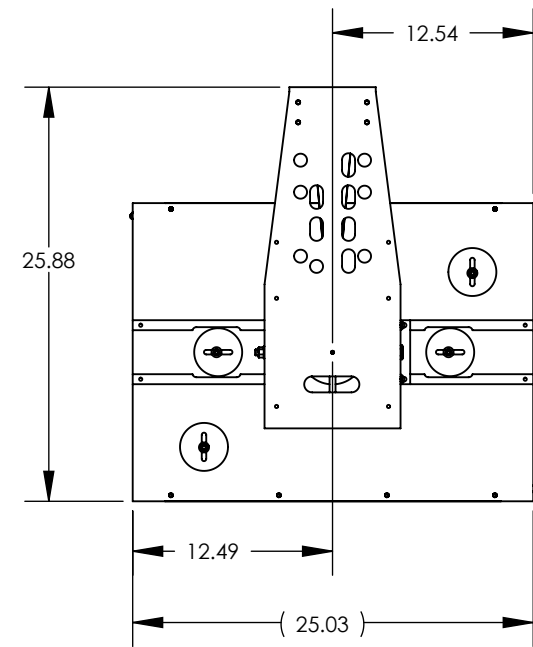
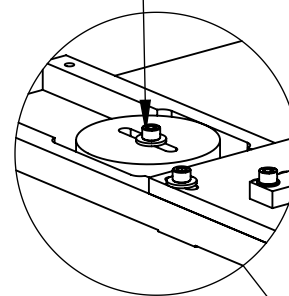


D1003238_AdLIGO_AOS_ITM Elliptical Baffle Final Assy, PART PDM REV: X-108, DRAWING PDM REV: X-054

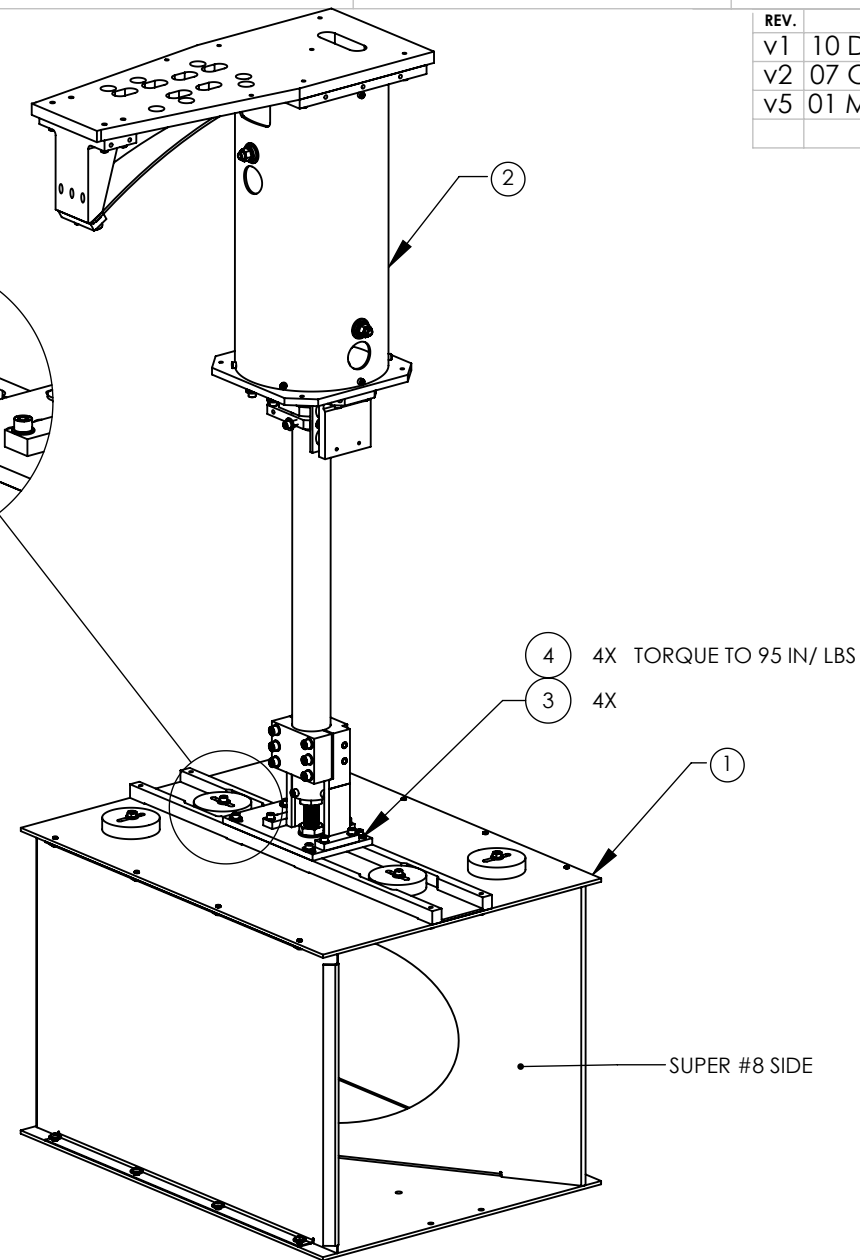
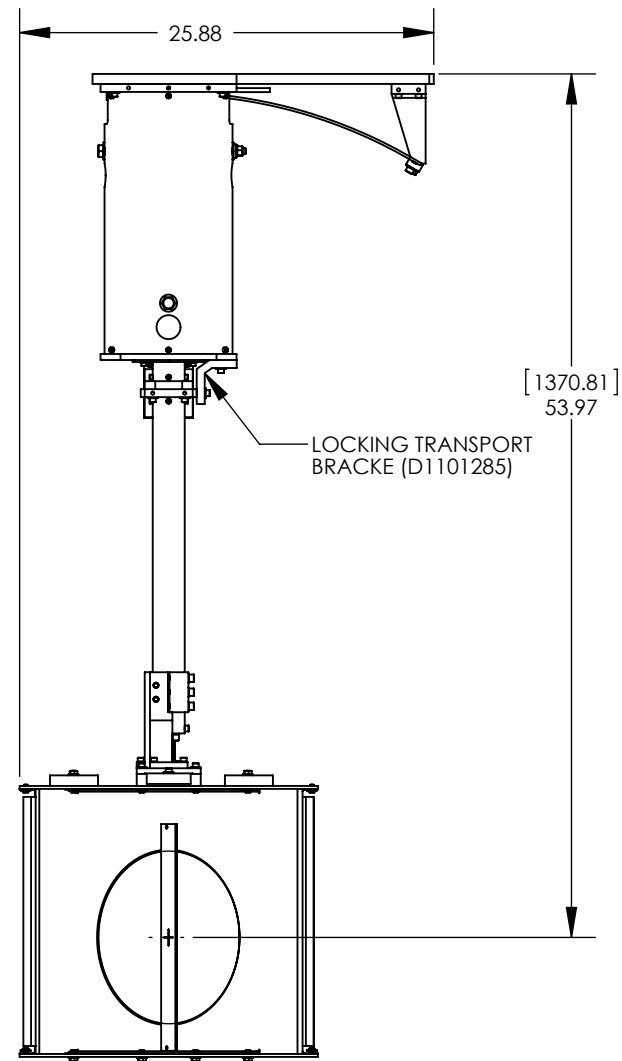
NOTES CONTINUED:



BALANCE WEIGHT
MT. HARDWARE
SUPPLIED WITH ITEM NO.1



DETAIL A
SCALE 1 : 4



REV.	DATE	DCN #	BOM #
v1	10 DEC 2010	E1000736	E1000751
v2	07 OCT 2011	E1101007	E1101039
v5	01 MAY 2013	-	-

ITEM NO.	PART NUMBER	DESCRIPTION	MATERIAL	QTY
7	C-403-N	SCHS, 4-40 x .188" L	18-8 SSSL	2
6	WF-04	FLAT WASHER #4	18-8 SSSL	2
5	D1102073	ITM ELLIPTICAL, ALIGNMENT CROSSHAIR TARGET	6061-T6 Al	1
4	C-2016-N	SOCKET HEAD CAP SCREW, SHC, 1/4-20 x 1" L	18-8 SSSL	4
3	98019A355	WASHER FLAT 1/4", .63" OD, .05"-.08" Thk, MIL-15795-810	300 SSSL	4
2	D1101885	gLIGO AOS ITM ELLIPTICAL BAFFLE SUSPENSION ASSY, H1/L1	N/A	1
1	D1101806	gLIGO ITM ELLIPTICAL BAFFLE ASSEMBLY	N/A	1

PARTS LIST

NOTES AND TOLERANCES: (UNLESS OTHERWISE SPECIFIED)

- 1. APPROXIMATE WEIGHT = 102.38 LBS.
 - 2. TORQUE SHCS TO VALUES SPECIFIED IN LIGO-T1 100066.
- DIMENSIONS ARE IN INCHES
TOLERANCES:
.XX ± .02
.XXX ± .010
ANGULAR ± 1.0°

MATERIAL N/A FINISH N/A μinch

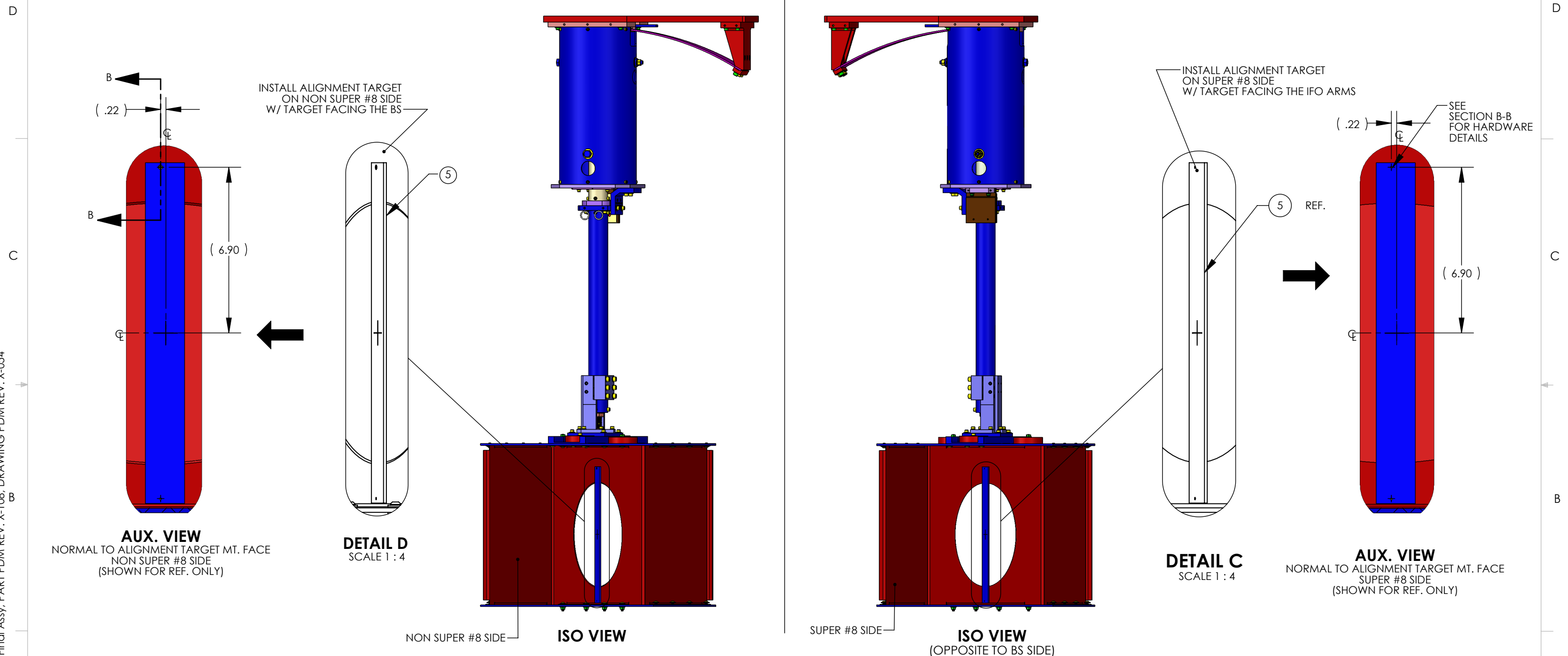
CALIFORNIA INSTITUTE OF TECHNOLOGY MASSACHUSETTS INSTITUTE OF TECHNOLOGY		PART NAME gLIGO AOS ITM ELLIPTICAL BAFFLE FINAL ASSY, H1/L1	
SYSTEM ADVANCED LIGO	SUB-SYSTEM AOS	DESIGNER M. RUIZ	DATE 07 DEC 2010
DRAFTER M. RUIZ	DATE 30 NOV 2010	SIZE B	DWG. NO. D1003238
CHECKER L. AUSTIN	APPROVAL M. SMITH	SCALE 1:10	PROJECTION
			REV. v5
			SHEET 1 OF 2

8 7 6 5 4 3 2 1

D1003238_AcLIGO_AOS_ITM Elliptical Baffle Final Assy. PART PDM REV: X-108. DRAWING PDM REV: X-054

TARGET FACING BS

TARGET FACING IFO ARM



ITEM NO.	PART NUMBER	DESCRIPTION	MATERIAL	QTY.
7	C-403-N	SCHS, 4-40 x .188" L	18-8 SSSL	2
6	WF-04	FLAT WASHER #4	18-8 SSSL	2
5	D1102073	ITM ELLIPTICAL, ALIGNMENT CROSSHAIR TARGET	6061-T6 Al	1
4	C-2016-N	SOCKET HEAD CAP SCREW, SHC, 1/4-20 x 1" L	18-8 SSSL	4
3	98019A355	WASHER FLAT 1/4", .63" OD, .05"-.08" Thk, MIL-15795-810	300 SSSL	4
2	D1101885	αLIGO AOS ITM ELLIPTICAL BAFFLE SUSPENSION ASSY, H1/L1	N/A	1
1	D1101806	αLIGO ITM ELLIPTICAL BAFFLE ASSEMBLY	N/A	1
PARTS LIST				

LIGO CALIFORNIA INSTITUTE OF TECHNOLOGY
MASSACHUSETTS INSTITUTE OF TECHNOLOGY

SIZE DWG. NO. **B** D1003238 REV. **v5**

SCALE: 1:10 PROJECTION: SHEET 2 OF 2