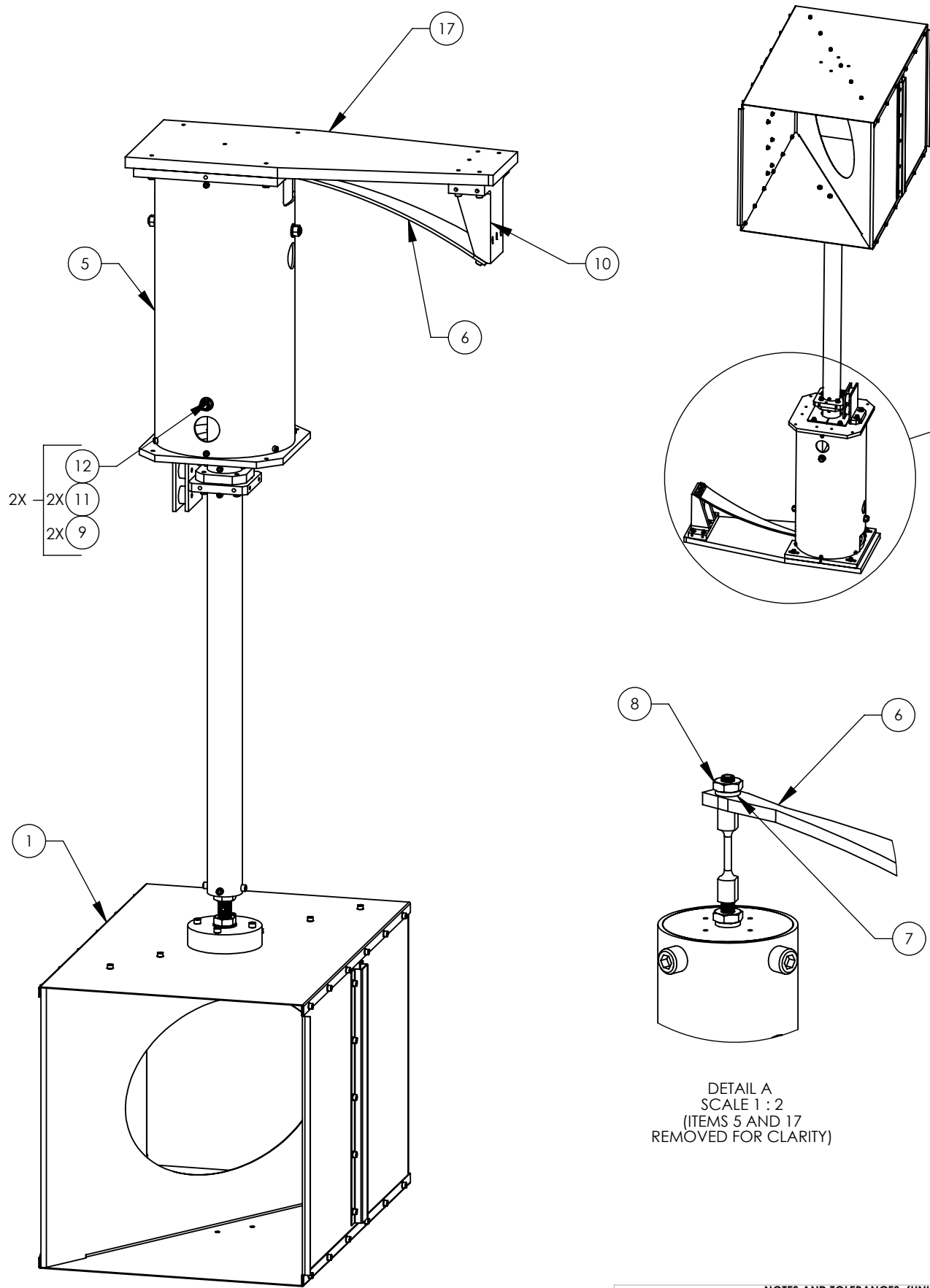


D1003275_AdlIGO_AOS_ITM Elliptical Baffle Right Final Assy, PART PDM REV: X-003, DRAWING PDM REV: X-003

NOTES CONTINUED:
5

| REV. | DATE | DCN # | DRAWING TREE # |
|------|-------------|----------|----------------|
| v1 | 13 DEC 2010 | E1000855 | - |
| - | - | - | - |
| - | - | - | - |



| 17 | D1002756 | ITM ELLIPTICAL INTERFACE MOUNTING PLATE | 304 SSSL | 1 | 1 | |
|----------|--------------|---|---------------------|-----|-------|-------|
| 16 | 92200A544 | SCREW, SHC, .25-20 X 1.25 LG., 300 SSSL | | 3 | 3 | |
| 15 | | SCREW, SOCKET HEAD CAP, 1/4-20 UNC-2A X 1 LONG, FULLY THREADED | Ag-PLATED 300 SSSL | 7 | 7 | |
| 14 | | SCREW, SOCKET HEAD CAP, 1/4-20 UNC-2A X 1.25 LONG, FULLY THREADED | Ag-PLATED 300 SSSL | 5 | 5 | |
| 13 | 90945A760 | Washer, Flat, .25 x .47 OD, 300 SSSL, Nas620-C41 6L | | 15 | 15 | |
| 12 | 98370A019 | WASHER #.375 X .75 OD, McMASTER | 18-8 SST | 4 | 4 | |
| 11 | 95412A651 | THREADED STUD .375-16 X 9, McMASTER | 18-8 SSSL | 2 | 2 | |
| 10 | D1002609 | SLC BLADE MOUNTING BRACKET | 6061-T6 Al | 1 | 1 | |
| 9 | - | HEX NUT, 3/8-16 | 300 SSSL | 4 | 4 | |
| 8 | - | HEX NUT, #10-24 | 300 SSSL | 1 | 1 | |
| 7 | - | WASHER, FLAT, #10 (NAS 620-C10 OR EQUIVALENT) | 300 SSSL | 1 | 1 | |
| 6 | D1002753 | ITM Elliptical Blade | MARAGING STEEL C250 | 1 | 1 | |
| 5 | D1002564 | SLC EDDY CURRENT DAMPING 8 DIA TUBE ASSY | N/A | 1 | 1 | |
| 4 | 92210A537 | VENTED FLAT SHCS #.25-20 X .50; McMASTER | 18-8 SSSL | 2 | 2 | |
| 3 | N35P500500HT | BLUNTING MAGNETIC-NEODYMIUM 1.00D X .50H | NEO 35 | 4 | 4 | |
| 2 | D1000930 | SLC MAGNET HOLDER STEEL PLATE | 416 SSSL | 1 | 1 | |
| 1 | D1003276 | ITM ELLIPTICAL BAFFLE RIGHT ASSY | N/A | 1 | 1 | |
| ITEM NO. | PART NUMBER | DESCRIPTION | MATERIAL | REQ | SPARE | TOTAL |

NOTES AND TOLERANCES: (UNLESS OTHERWISE SPECIFIED)

DIMENSIONS ARE IN
TOLERANCES:
.XX ±
.XXX ±
ANGULAR ± *

1. INTERPRET DRAWING PER ASME Y14.5-1994.
2. REMOVE ALL SHARP EDGES, R.02 MIN.
3. DO NOT SCALE FROM DRAWING.
4. ALL MACHINING FLUIDS MUST BE FULLY SYNTHETIC, FULLY WATER SOLUBLE AND FREE OF SULFUR, SILICONE, AND CHLORINE.

MATERIAL: N/A
FINISH: N/A μinch
NEXT ASSY:

PARTS LIST

LIGO CALIFORNIA INSTITUTE OF TECHNOLOGY
MASSACHUSETTS INSTITUTE OF TECHNOLOGY

PART NAME: **ITM ELLIPTICAL BAFFLE RIGHT FINAL ASSY**

DESIGNER: [blank]
DRAFTER: MRUIZ
CHECKER: [blank]
APPROVAL: [blank]

SIZE DWG. NO.: **B**
REV.: **v1**

DATE: 13 DEC 2010

SCALE: 1:16 PROJECTION: [blank] SHEET 1 OF 1