



*LIGO Laboratory / LIGO Scientific Collaboration*

LIGO-T020098-01-D

*LIGO*

25 July 2002

---

Pier Stiffness and Modes

---

Dennis Coyne

Distribution of this document:  
LIGO Science Collaboration

This is an internal working note  
of the LIGO Project.

**California Institute of Technology**  
**LIGO Project – MS 18-34**  
**1200 E. California Blvd.**  
**Pasadena, CA 91125**  
Phone (626) 395-2129  
Fax (626) 304-9834  
E-mail: [info@ligo.caltech.edu](mailto:info@ligo.caltech.edu)

**Massachusetts Institute of Technology**  
**LIGO Project – NW17-161**  
**175 Albany St**  
**Cambridge, MA 02139**  
Phone (617) 253-4824  
Fax (617) 253-7014  
E-mail: [info@ligo.mit.edu](mailto:info@ligo.mit.edu)

**LIGO Hanford Observatory**  
**P.O. Box 1970**  
**Mail Stop S9-02**  
**Richland WA 99352**  
Phone 509-372-8106  
Fax 509-372-8137

**LIGO Livingston Observatory**  
**P.O. Box 940**  
**Livingston, LA 70754**  
Phone 225-686-3100  
Fax 225-686-7189

<http://www.ligo.caltech.edu/>

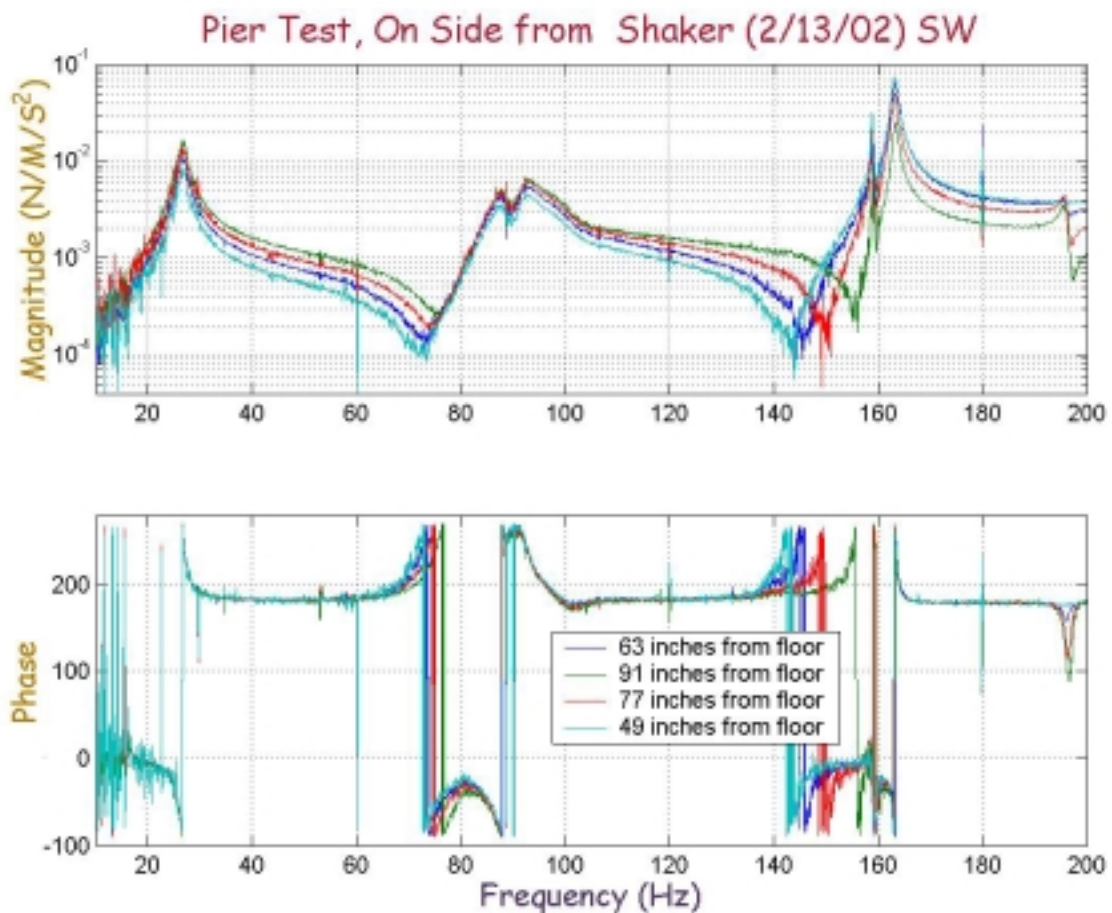
## Abstract

The DC compliance and the natural mode frequencies of the seismic isolation support pier were measured in the LASTI facility (see the 15 Feb 2002 LASTI elog entry). This note provides companion finite element results and a possible explanation for the low measured stiffness of the pier.



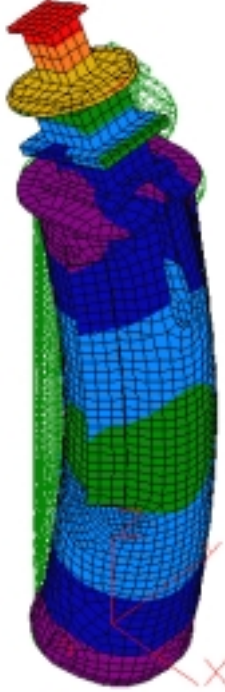
Rev 01: correction to the measured pier stiffness.

## 1 Modes

The LASTI elog entry of 15 Feb 2002 has several transfer function plots for shaker excitation near the top of the pier with the pier disconnected from the crossbeams but with the spacer weldments in place. The following plot is typical of the transfer function results:



Finite element analysis indicates that the resonances at  $\sim 27$  Hz and  $\sim 165$  Hz are likely the first and second beam bending modes. These modes are indicated below in the displaced mode shape plots. The model does not include the structure indicated in the transfer function measurements between these two bending modes. These may be due to interaction with adjacent structures (such as the chamber).

Mode 1: 26.2 Hz	Mode 2: 26.2 Hz	Mode 3: 188 Hz
		

Note: The mode frequencies obtained for the model shown are actually 28.7 Hz, 29.5 Hz and 215 Hz. The frequencies cited in the table are for a model with significantly more elements.

## 2 Stiffness

A measurement of the stiffness of the pier to a lateral load near the top of the pier (center of the flat plate welded to the side of the pier at its top) was also reported in the LASTI elog on 15 Feb 2002. The result of this measurement was a static compliance of **0.089 microns/Newton**. (Note: The original entry in the elog is incorrect and will be amended.)

The corresponding result from the finite element analysis is  $6 \times 10^{-8}$  cm displacement for 1000 dynes of applied force, or 0.06 microns/N. This result is (approximately) consistent with the modal analysis:

$$k = m_k (2\pi f)^2$$

where  $k$  = stiffness,  $m_1$  = modal mass of the first mode  $\sim 1/2$  pier mass (a guess) = 550 Kg,  $f_1$  = frequency of the first mode = 26 Hz, so  $k = 15 \times 10^6$  N/m or  $1/k = 0.07$  microns/N.

The discrepancy between the analysis and the measurement is likely due to the compliance of the bolts and possibly the grout and floor at the base of the pier. Consequently the measured value is to be preferred over the analytical value.

