

# T020177-00-E HEPI Actuator at Stanford Oct 17 2002

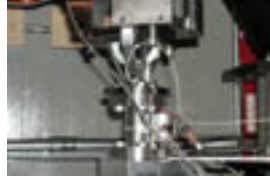
J Kern



[DSCN1659.jpg](#)



[DSCN1668.jpg](#)



[DSCN1669.jpg](#)



[DSCN1670.jpg](#)



[DSCN1671.jpg](#)



[DSCN1672.jpg](#)



[DSCN1673.jpg](#)



[DSCN1674.jpg](#)



[DSCN1675.jpg](#)



[DSCN1676.jpg](#)



[DSCN1677.jpg](#)



[DSCN1678.jpg](#)



[DSCN1679.jpg](#)



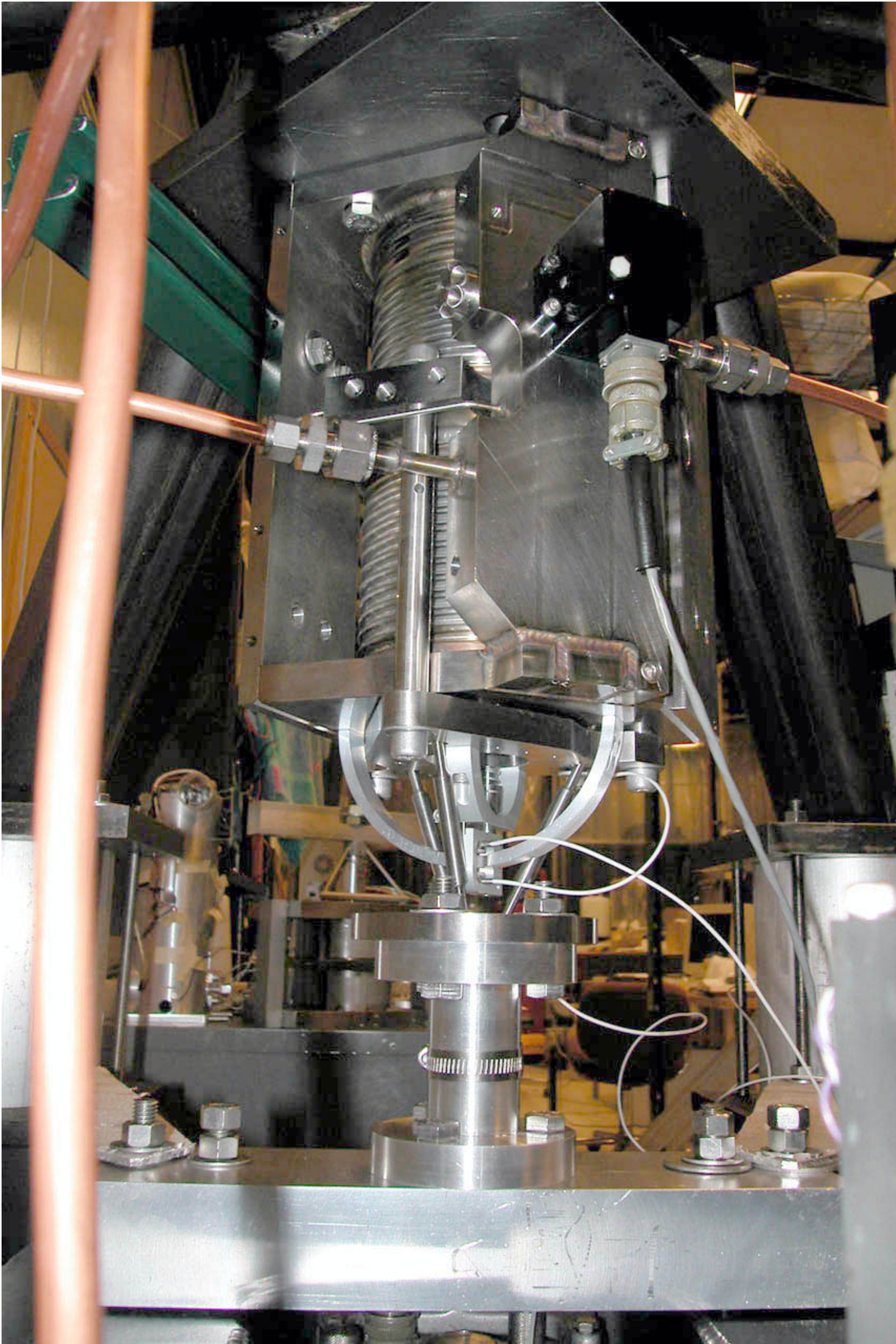
[DSCN1680.jpg](#)



[DSCN1681.jpg](#)

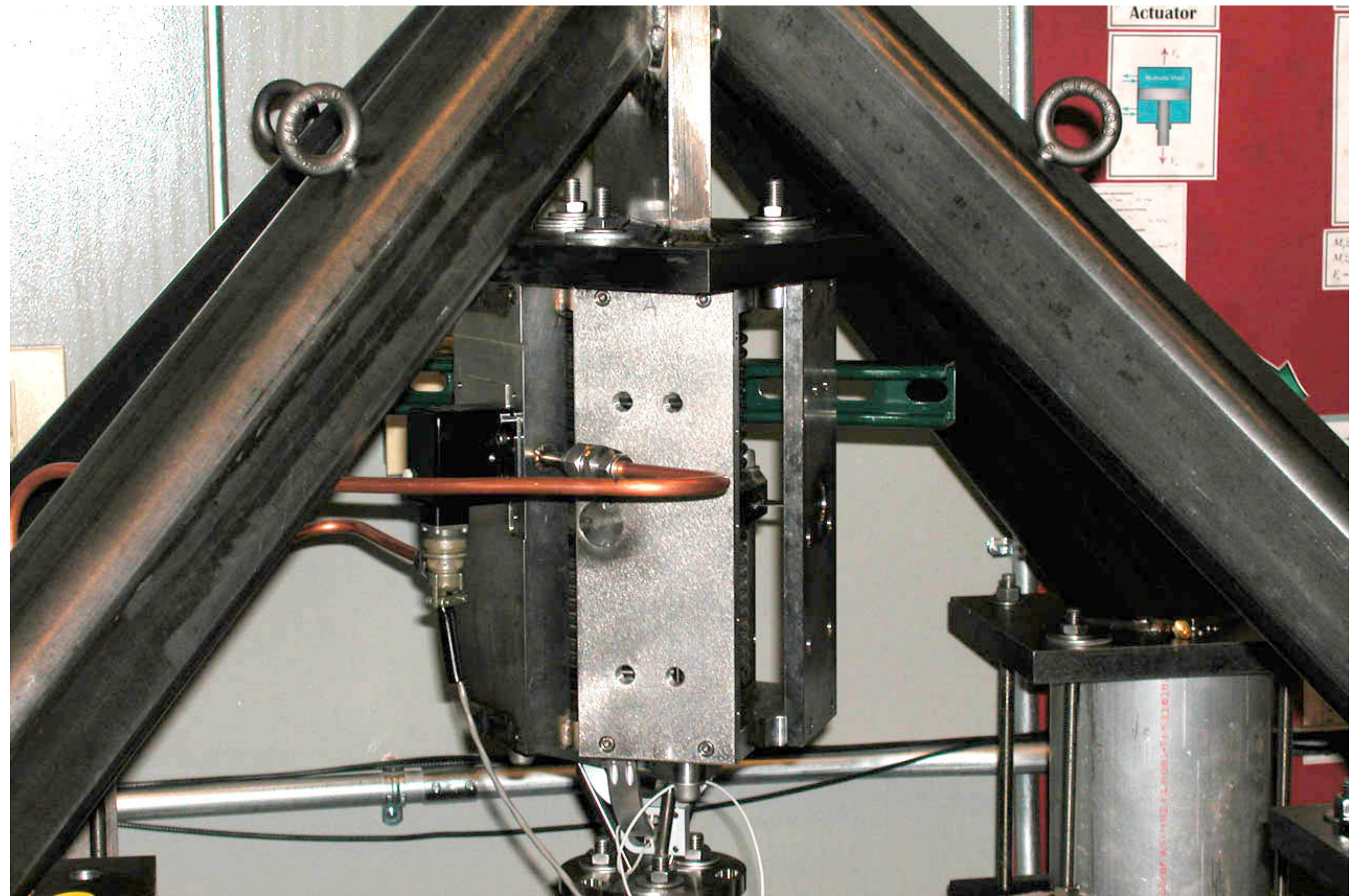
# Corwin's Shiny new actuator / DSCN1659

10/17/2002



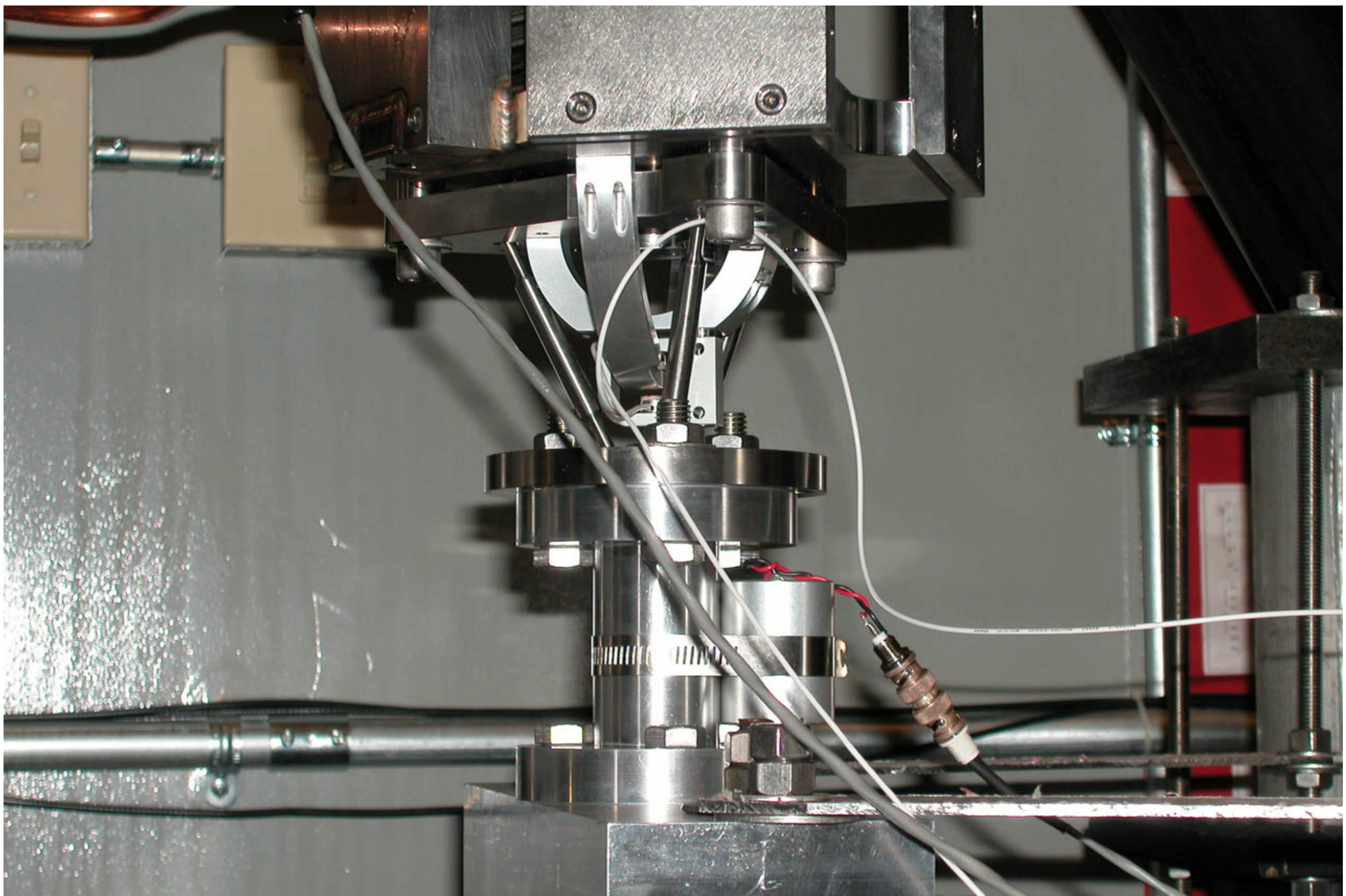
# Corwin's Shiny new actuator / DSCN1668

10/17/2002



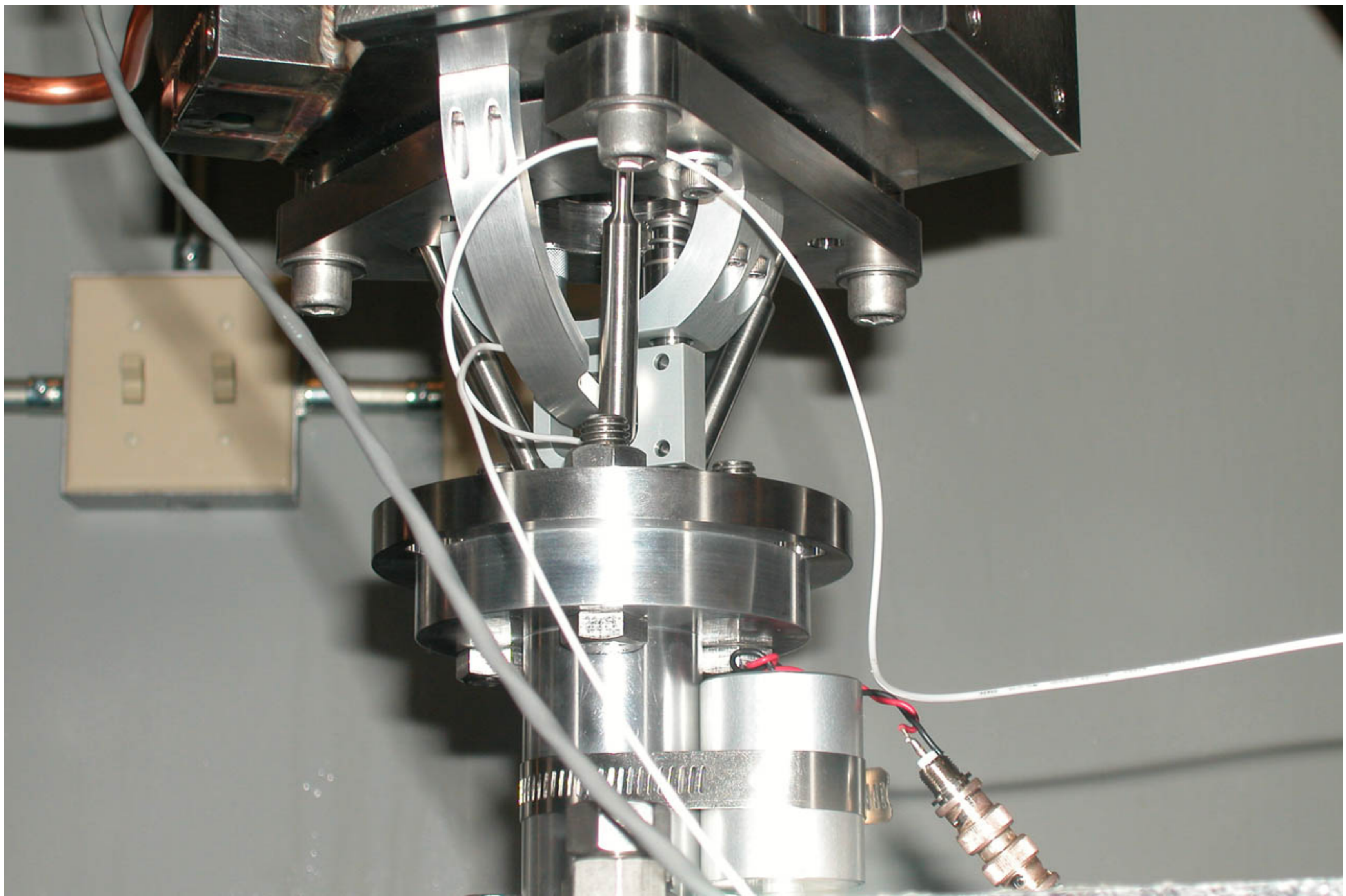
**Corwin's Shiny new actuator / DSCN1669**

10/17/2002



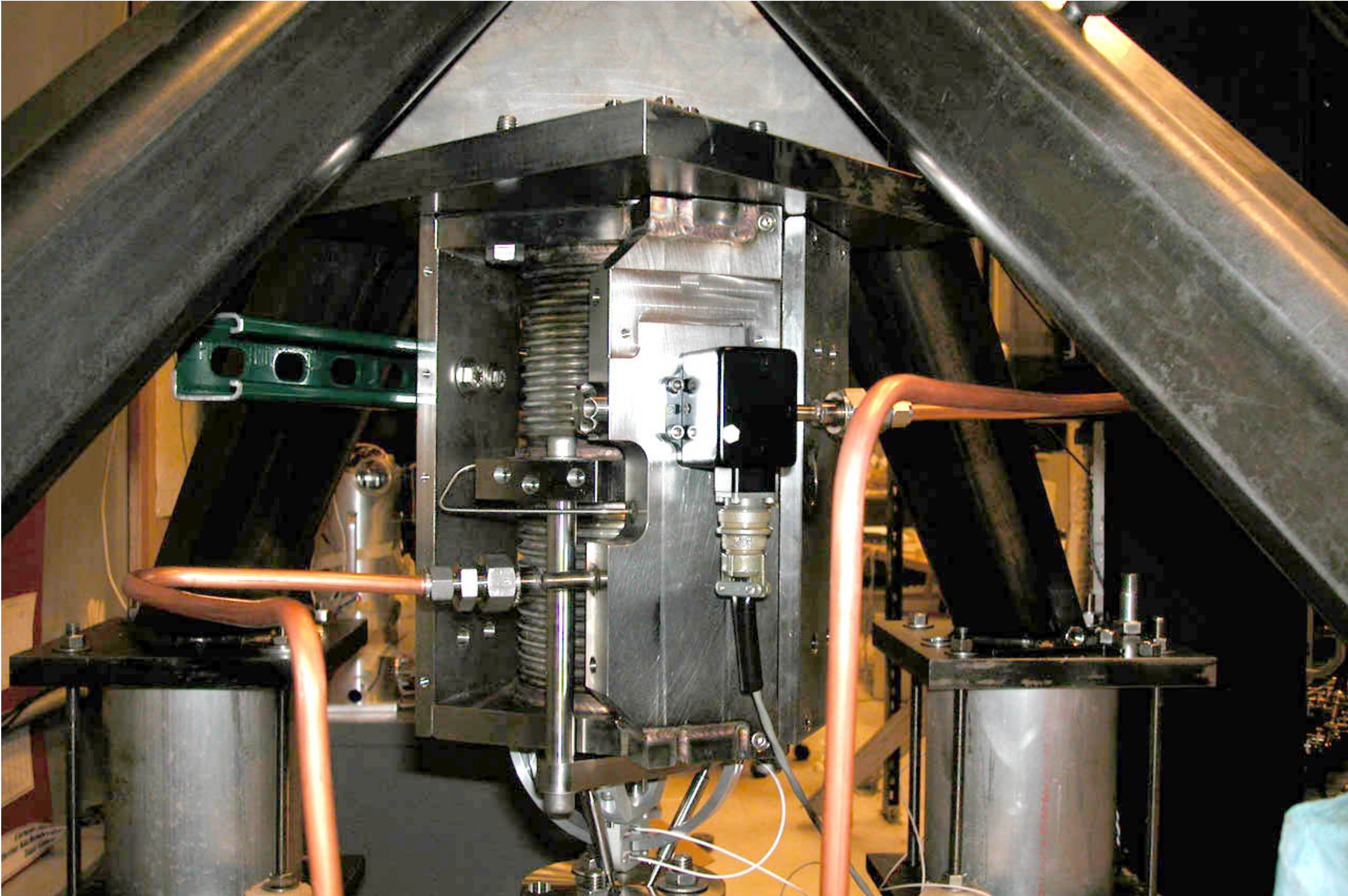
**Corwin's Shiny new actuator / DSCN1670**

10/17/2002



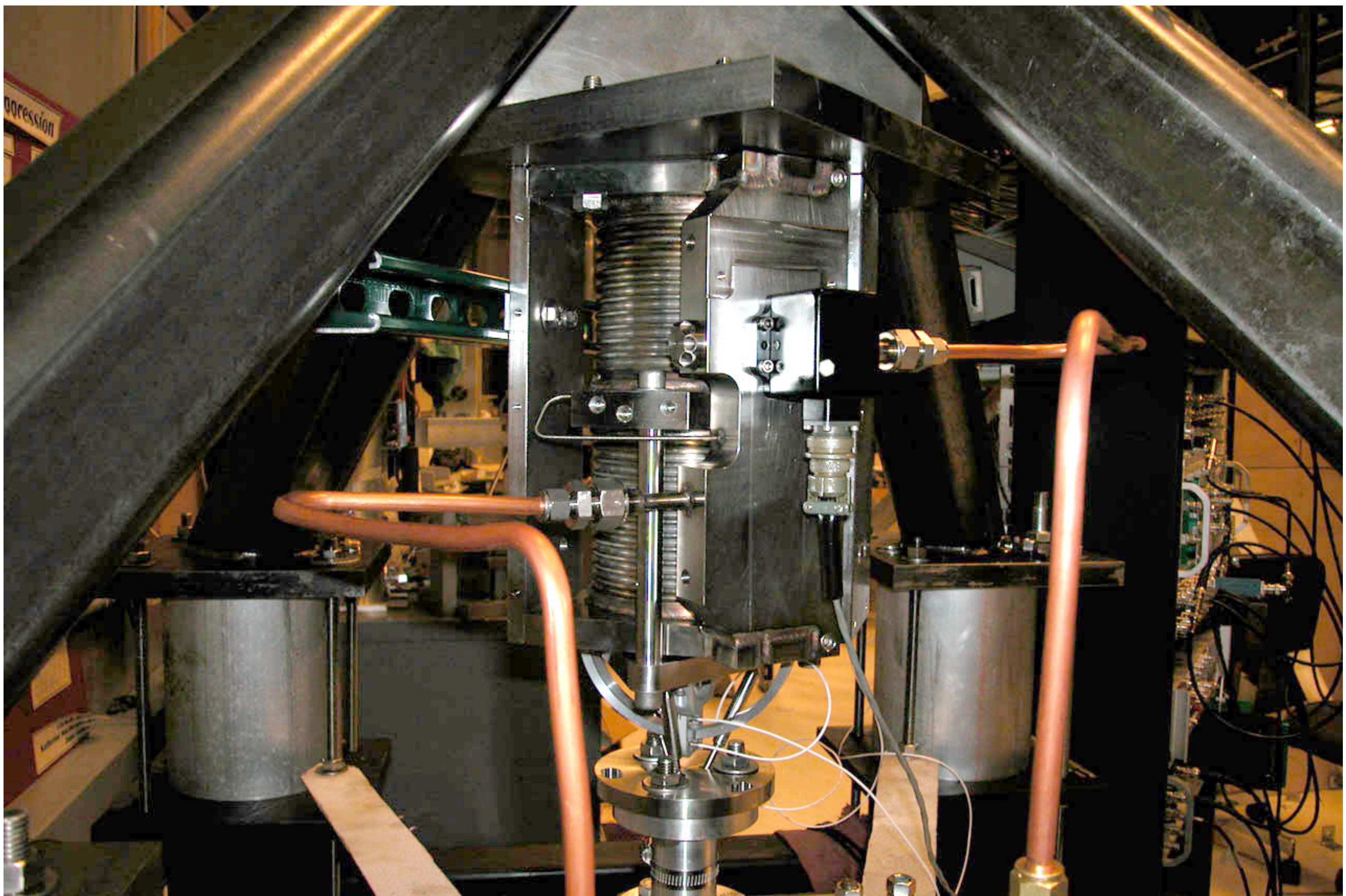
**Corwin's Shiny new actuator / DSCN1671**

10/17/2002



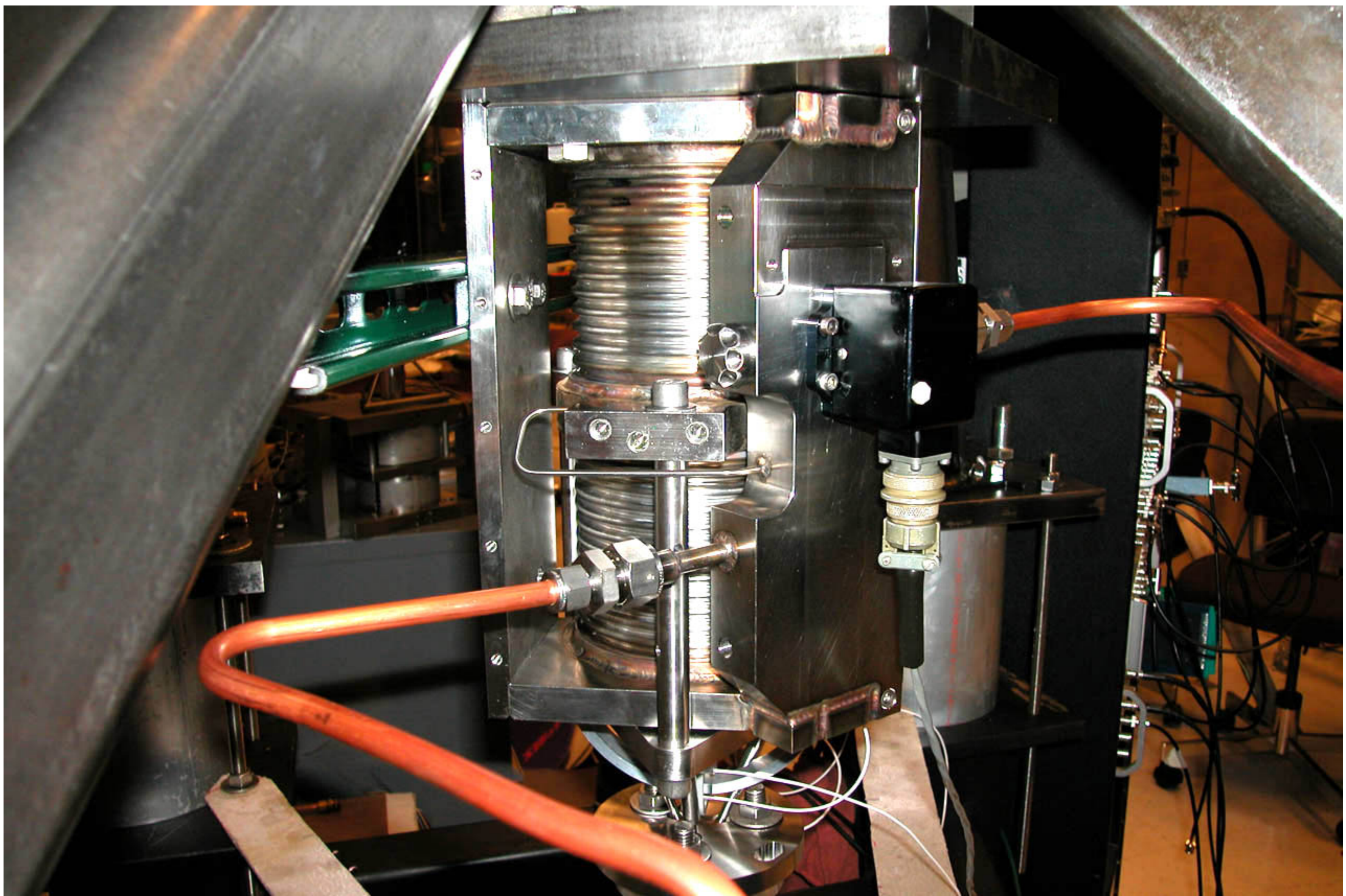
**Corwin's Shiny new actuator / DSCN1672**

10/17/2002



**Corwin's Shiny new actuator / DSCN1673**

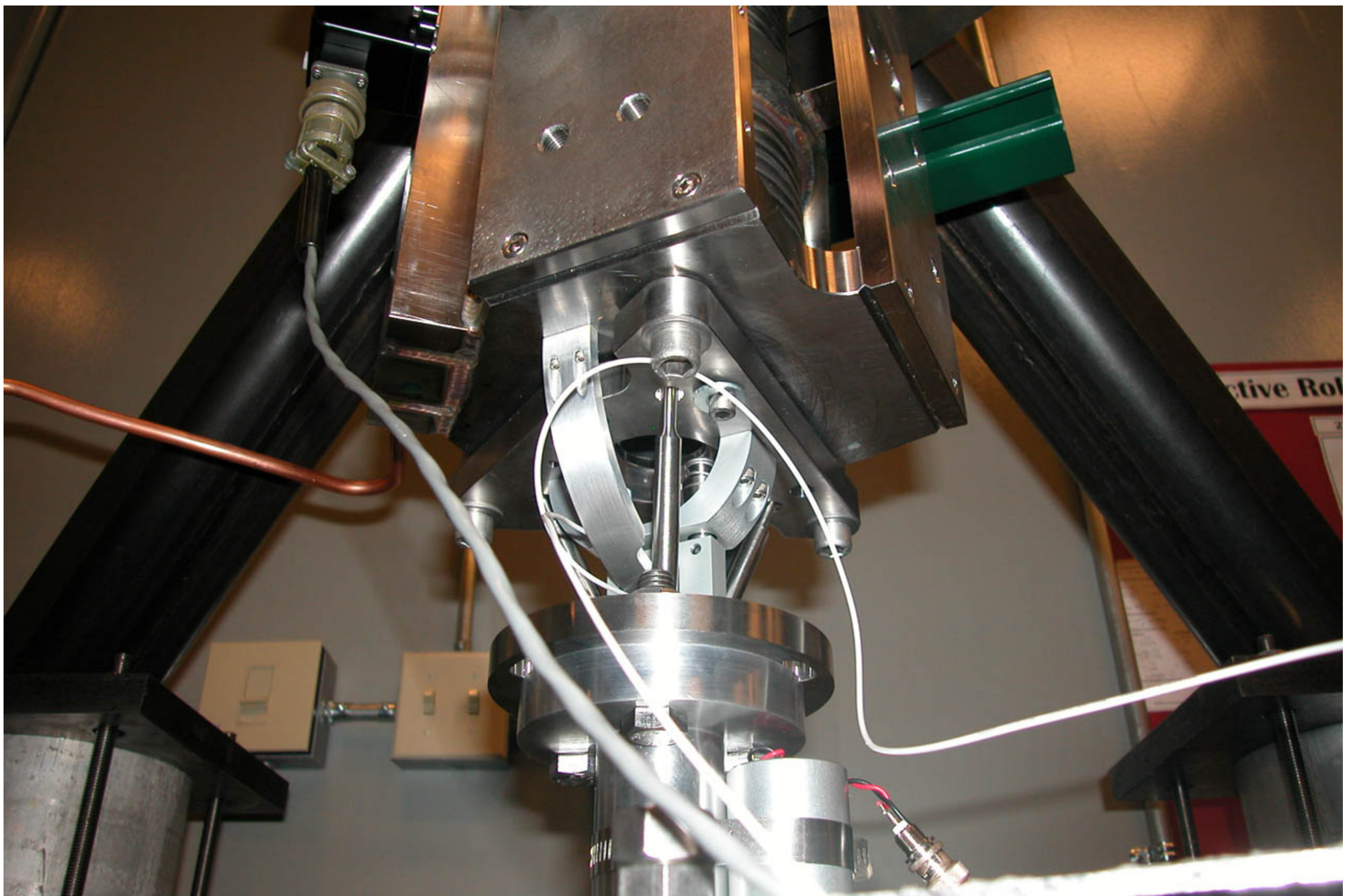
10/17/2002





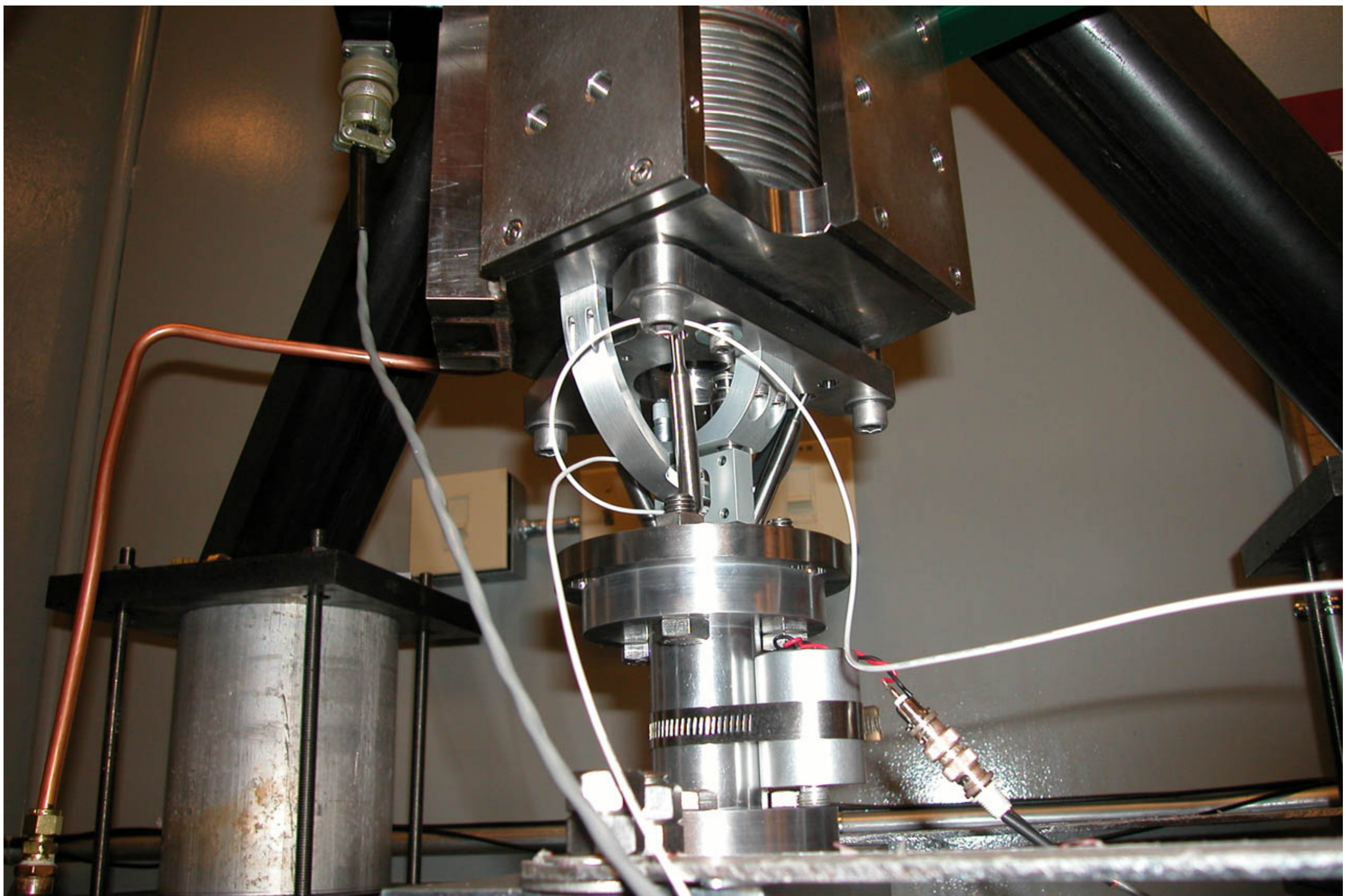
**Corwin's Shiny new actuator / DSCN1674**

10/17/2002



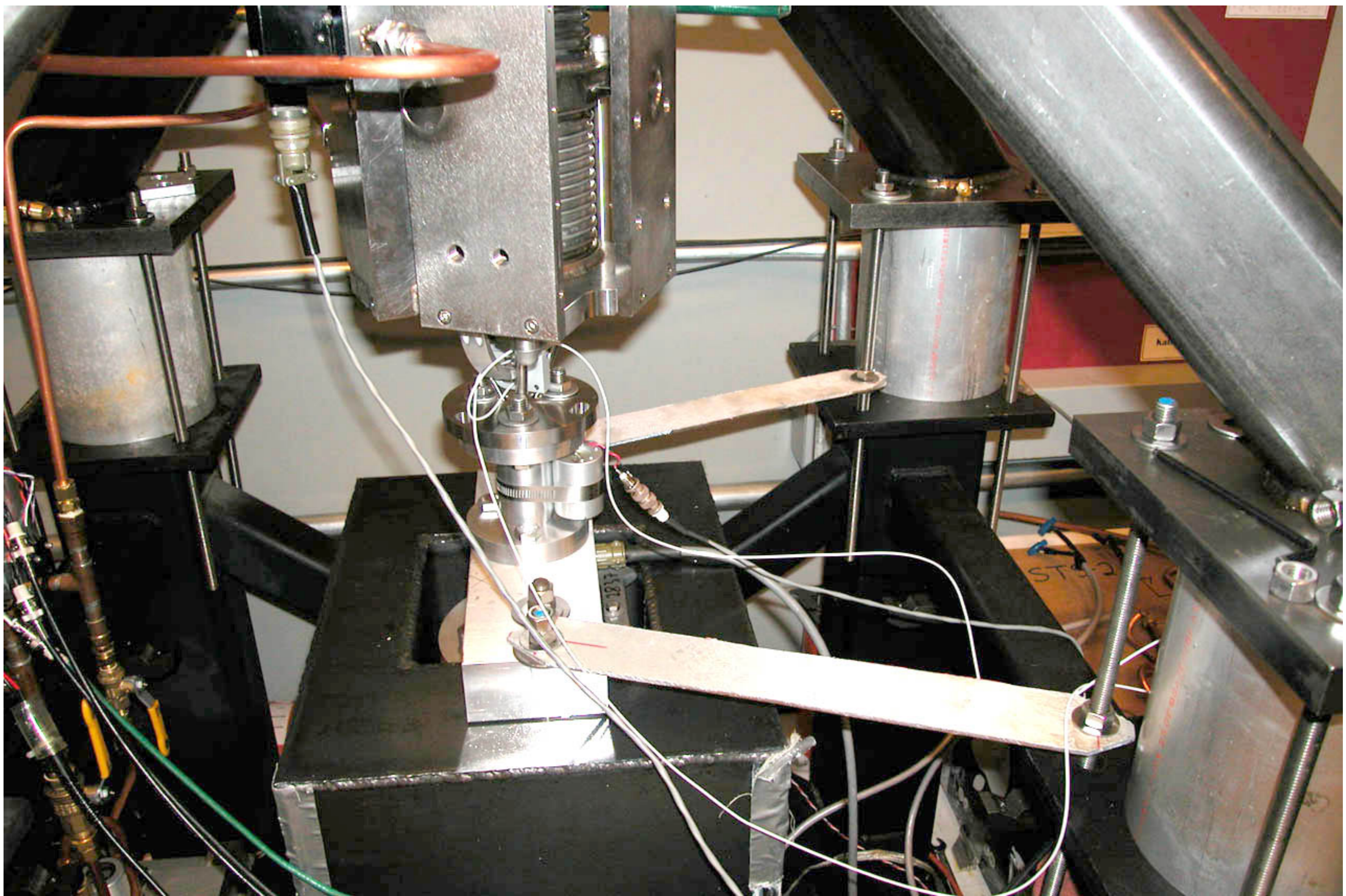
**Corwin's Shiny new actuator / DSCN1675**

10/17/2002



**Corwin's Shiny new actuator / DSCN1676**

10/17/2002



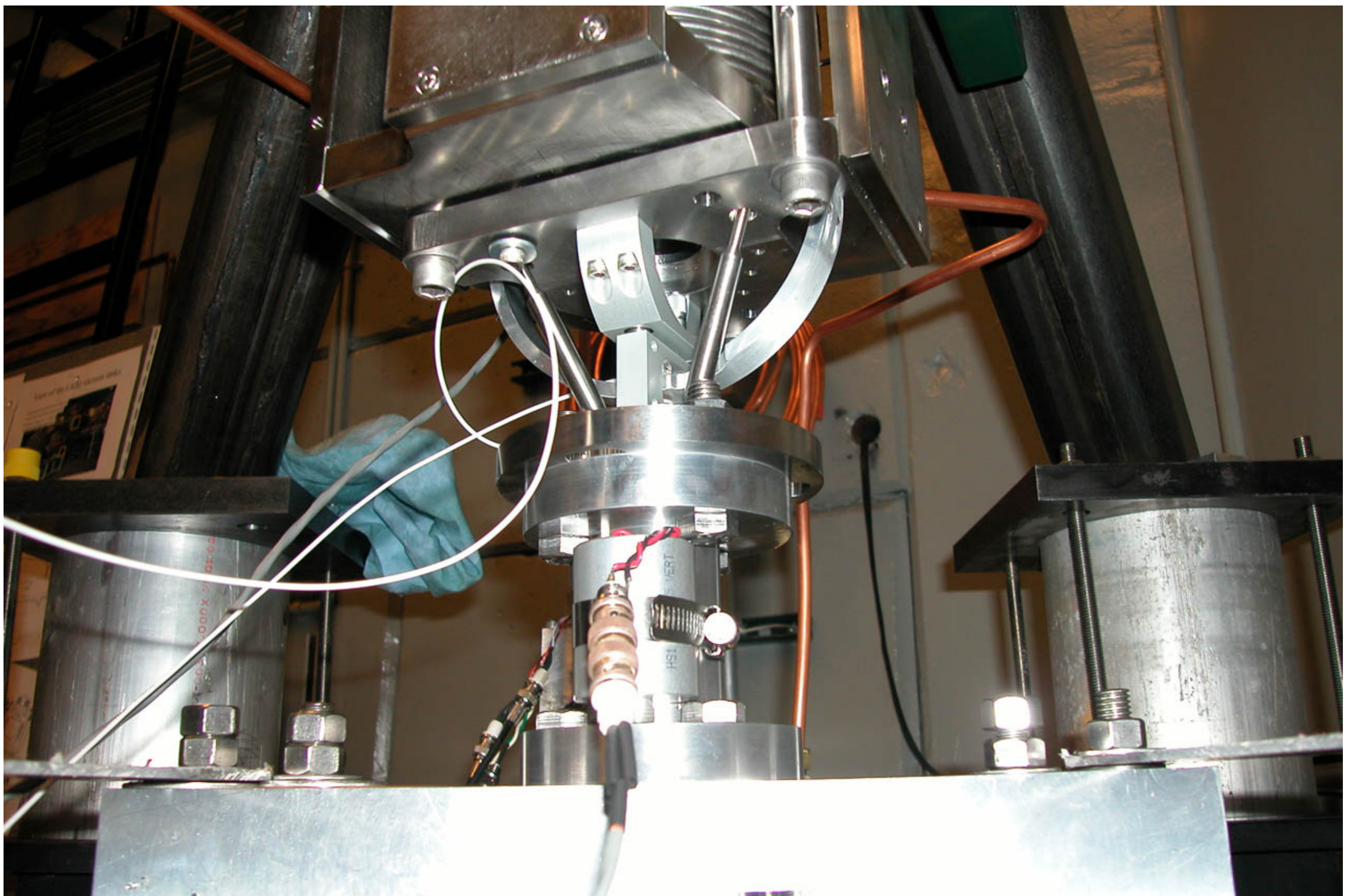
# Corwin's Shiny new actuator / DSCN1677

10/17/2002



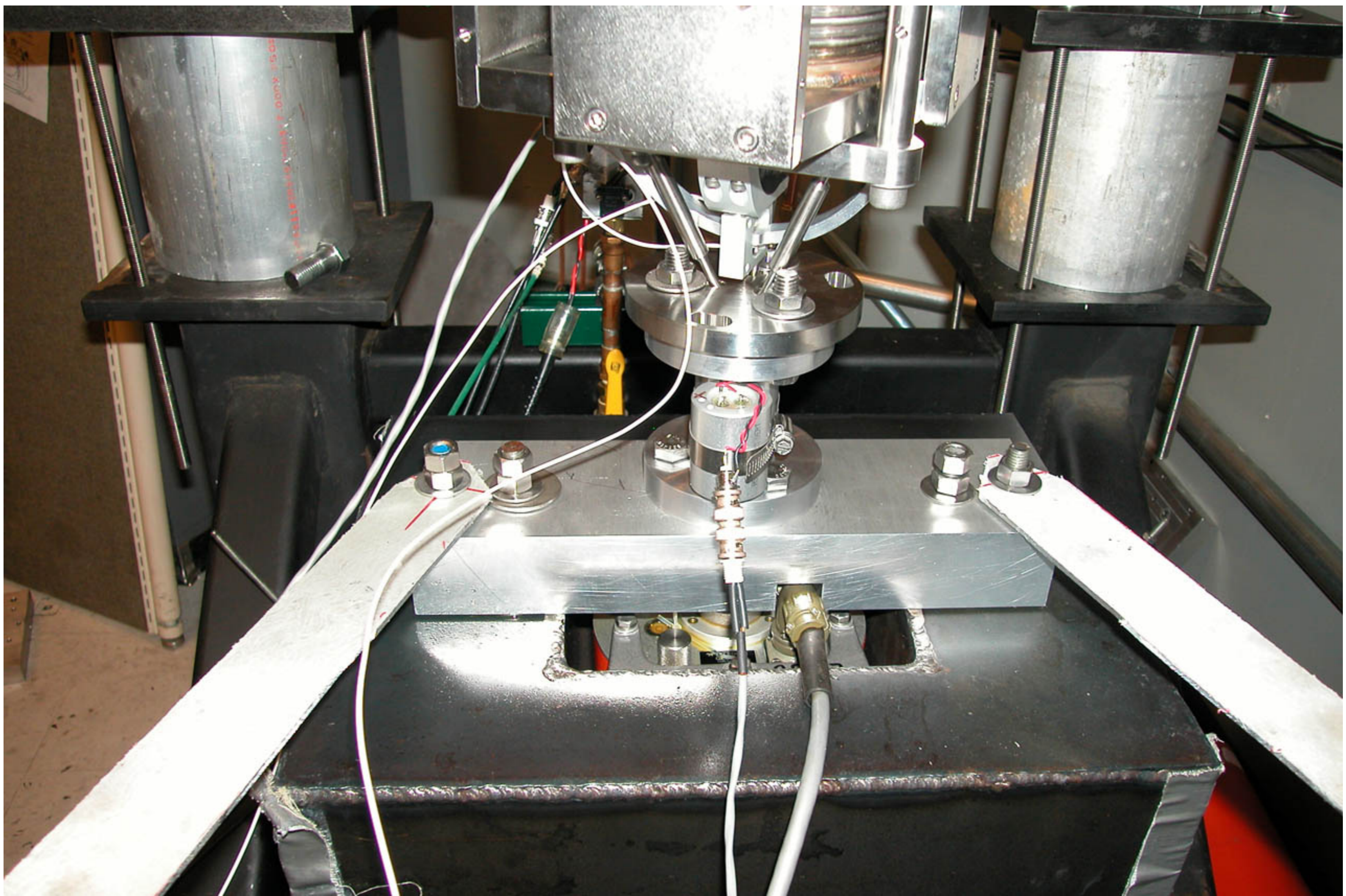
**Corwin's Shiny new actuator / DSCN1678**

10/17/2002



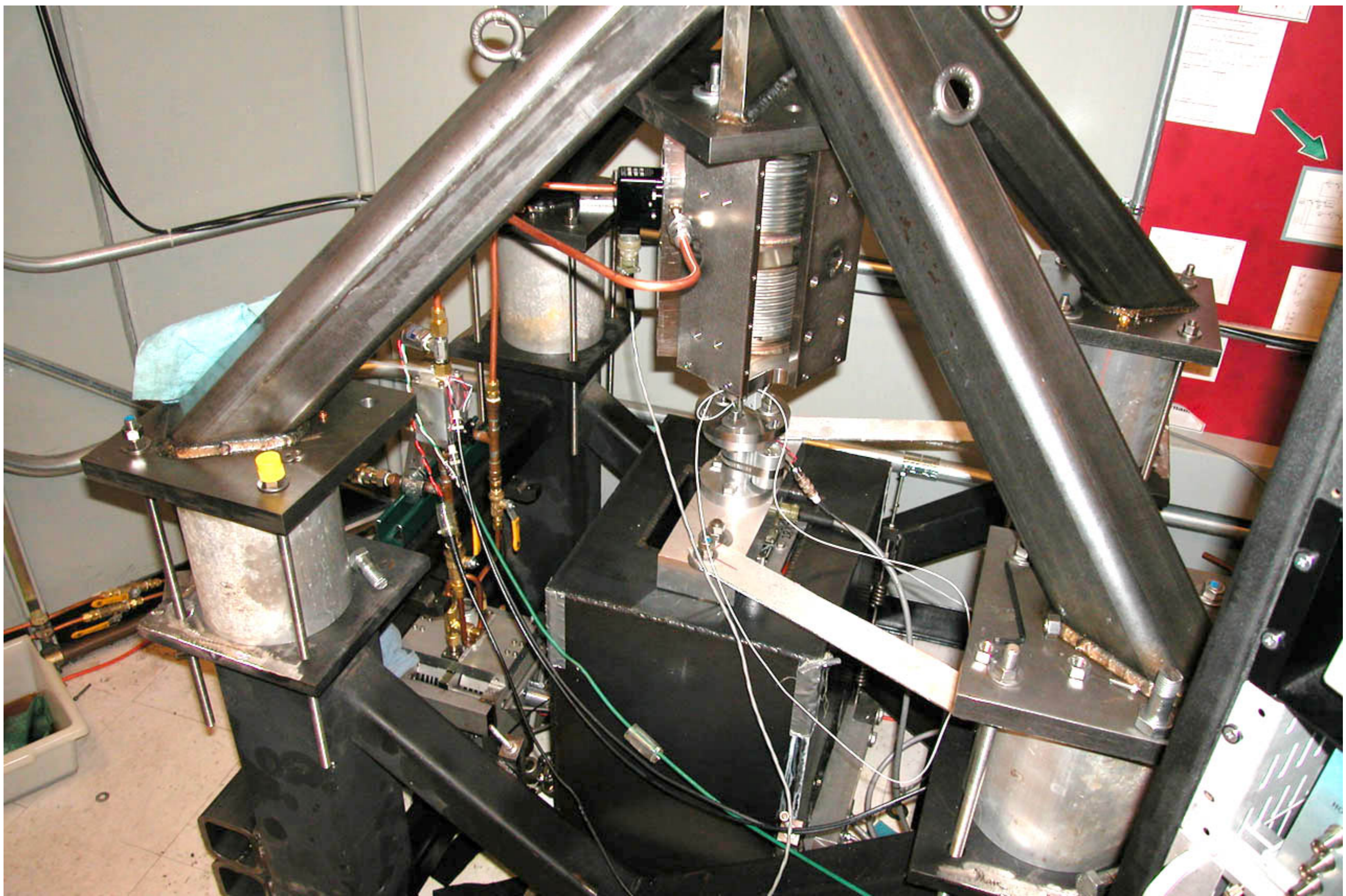
**Corwin's Shiny new actuator / DSCN1679**

10/17/2002



**Corwin's Shiny new actuator / DSCN1680**

10/17/2002



**Corwin's Shiny new actuator / DSCN1681**

10/17/2002

