

New Folder Name Termination Support

Sketch and summary of Leads per
Anchor Bolt

L190-TSE0125-00-B

CBI Services, Inc.**FAX TRANSMISSION**1501 N. Division Street
Plainfield IL 605434-8929Fax #: CBI:CT 2.3/0009
RE: Contract PC181520
Foundation Loads;Termination SupportPhone: 815 439 6000
FAX: 815 439 6010

TO: Larry Jones **FROM:** Lance Buboltz
COMPANY: Caltech **DATE:** 12/15/95
FAX NO.: (818)340-9834 **# OF PAGES:** (including cover) 3
FAX I.D. # _____
RE: _____

Larry,
Attached is the Termination Support Sketch and the summary of loads per Anchor Bolt. The anchor points designated on the sketch are listed on the summary sheet. We are also working on the same information for other fixed supports, and hopefully can provide this information later today.
I am advised the associated calculations are not checked.

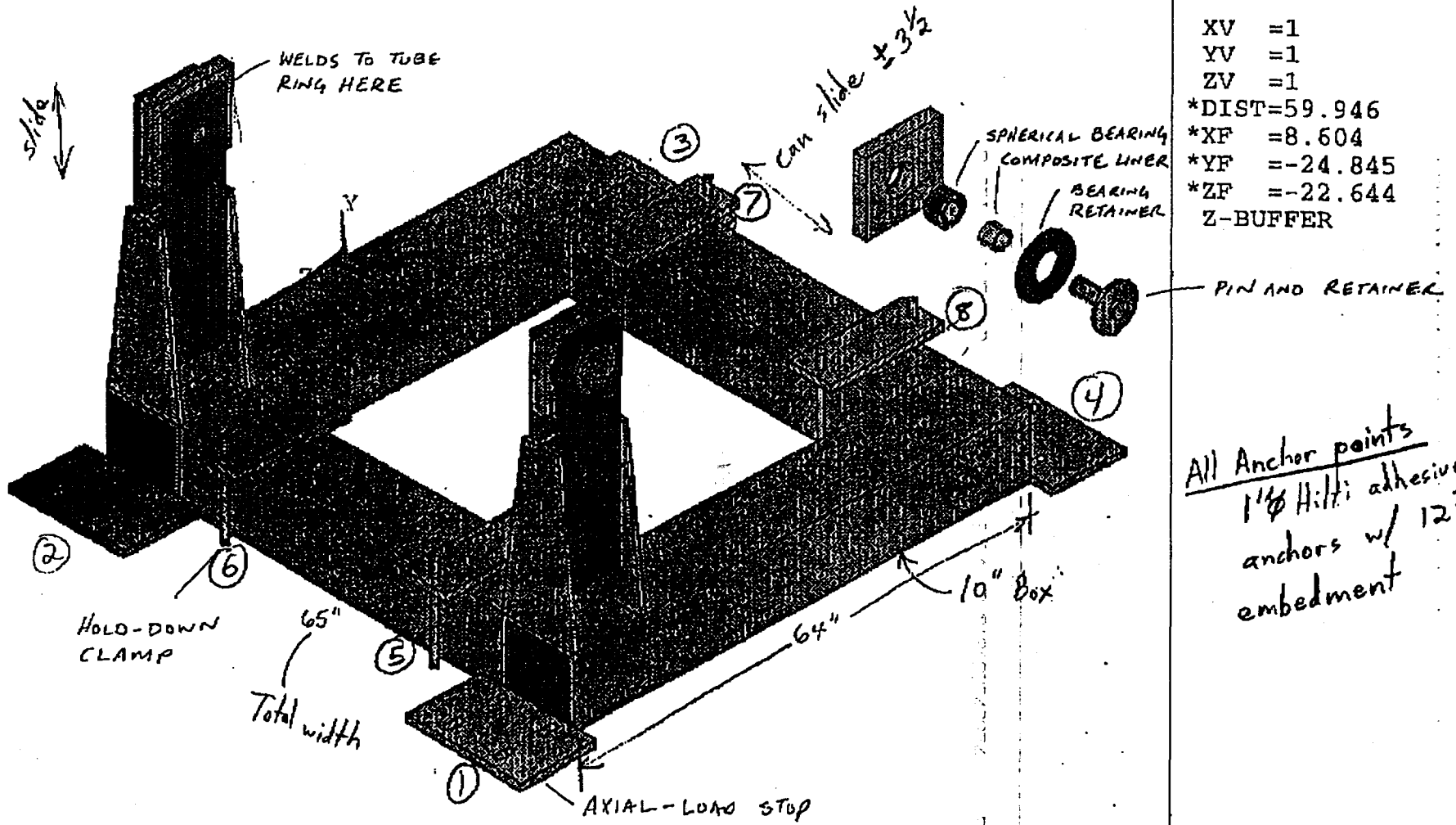
Regards


Lance Buboltz

Ⓢ = Anchor point #

ANSYS 5.1
DEC 8 1995
12:06:23
PLOT NO. 1
VOLUMES
REAL NUM

XV = 1
YV = 1
ZV = 1
*DIST = 59.946
*XF = 8.604
*YF = -24.845
*ZF = -22.644
Z-BUFFER



All Anchor points
1 1/8 Hilti adhesive
anchors w/ 12 3/8" embedment

Termination Support

Summary of Loads Per Anchor Bolt (Termination Support)

<u>Anchor Pt</u>	<u>Shear (lb/bolt)</u>	<u>Tension (lb/bolt)</u>
1	3,676	0
2	3,676	0
3	3,656	0
4	3,656	0
5	0	11,831
6	0	11,831
7	0	12,347
8	0	12,347

* All anchor bolts are 1" ϕ Adhesive w/ 12 $\frac{3}{8}$ " Embedment

SUBJECT	OFFICE		REVISION		REFERENCE NO.
	MADE BY DTR	CHKD BY	MADE BY	CHKD BY	SHT <u>51</u> OF <u> </u>
	DATE 12/14/95	DATE	DATE	DATE	