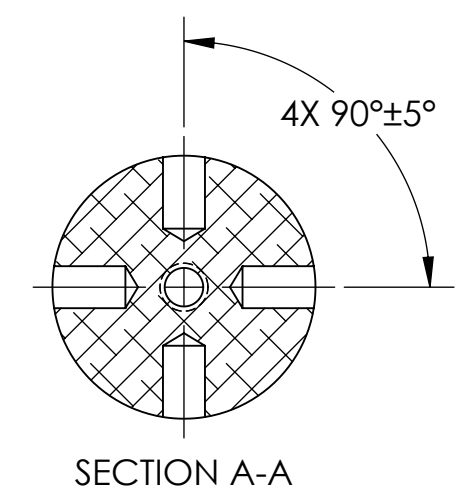
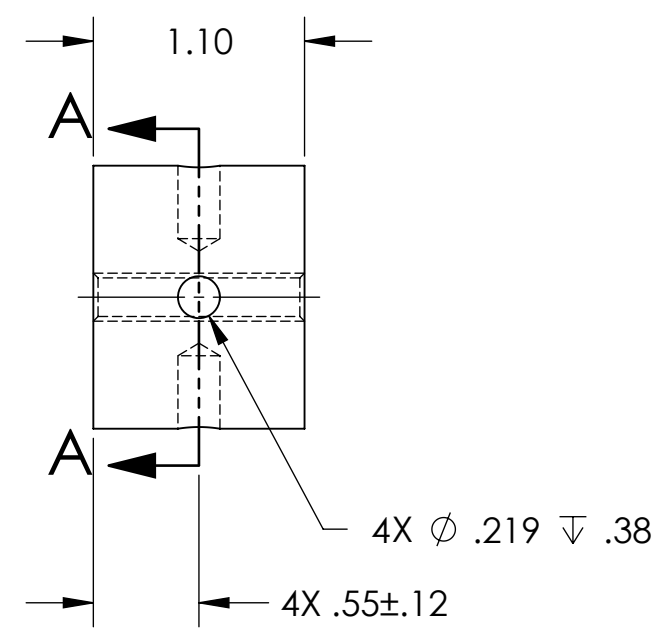
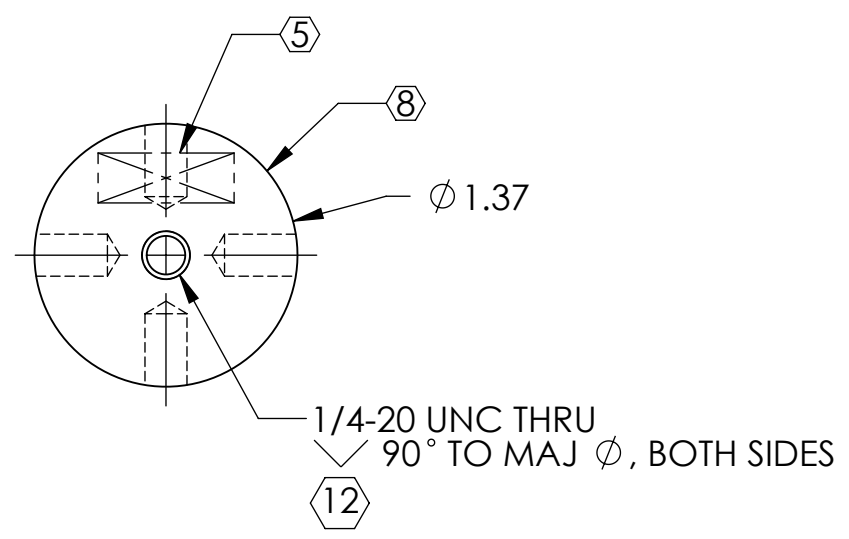
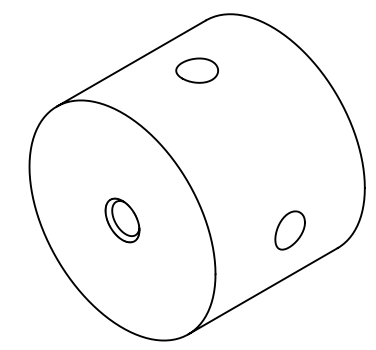


NOTES CONTINUED:

- ⑤ SCRIBE, ENGRAVE, OR MECHANICALLY STAMP (NO DYES OR INKS) A UNIQUE THREE DIGIT SERIAL NUMBER & REVISION NUMBER ON EACH PART. SERIAL NUMBERS START AT 001 FOR THE FIRST ARTICLE AND PROCEED CONSECUTIVELY. BAG AND TAG PARTS WITH THEIR DRAWING PART NUMBER, REVISION, VARIANT OR "TYPE" (IF APPLICABLE), AND QUANTITY. IF PARTS ARE TOO SMALL TO SCRIBE, BAGGING AND TAGGING ALONE IS SUFFICIENT.
EXAMPLE (PART): 001-v1
EXAMPLE (TAG): DXXXXXX-VY, TYPE-XX, QTY: TBD
- D 6. APPROXIMATE WEIGHT = .44 LB [.20 KG].
- 7. MACHINE ALL SURFACES TO REMOVE OXIDES AND MILL FINISH. USE OF ABRASIVE REMOVAL TECHNIQUES IS NOT ALLOWED.
- ⑧ BREAK SHARP EDGES ACCORDING TO LIGO-E0900364 SECTION 4.7.
- 9. ALL PARTS SHALL BE MANUFACTURED IN ACCORDANCE WITH LIGO SPECIFICATION E0900364.
- 10. ALL MATERIAL IS TO BE VIRGIN MATERIAL (i.e. NOT WELD REPAIRS OR PLUGS UNLESS APPROVED IN ADVANCE IN WRITING BY LIGO. REFER TO LIGO-E0900364.
- 11. NO REPAIRS SHALL BE MADE UNLESS APPROVED IN ADVANCE, AND IN WRITING, BY LIGO LABORATORY. IN GENERAL WELD REPAIRS AND PRESS FIT INSERT REPAIRS ARE NEVER ACCEPTABLE; THE MATERIAL SHOULD BE MADE WITH VIRGIN MATERIAL. SPECIAL CIRCUMSTANCES CAN BE REVIEWED IF / WHEN BROUGHT TO THE ATTENTION OF LIGO CONTRACTING OFFICER'S REPRESENTATIVE (COTR) THROUGH A MATERIAL REVIEW BOARD (MRB) PROCESS. REFER TO LIGO-E0900364.
- ⑫ ALL TAPPED HOLES .005 OVERSIZE BOTH DRILL AND TAP.

REV.	DATE	DCN #	DRAWING TREE #
v1	22 DEC 2010	E1000762-v1	-
-	-	-	-
-	-	-	-



D1003330 aLIGO Optics Table Small Cylinder Mass, PART PDM REV: X-006, DRAWING PDM REV: X-007

NOTES AND TOLERANCES: (UNLESS OTHERWISE SPECIFIED)				LIGO CALIFORNIA INSTITUTE OF TECHNOLOGY MASSACHUSETTS INSTITUTE OF TECHNOLOGY		PART NAME	
DIMENSIONS ARE IN INCHES TOLERANCES: .XX ± .01 .XXX ± .005 ANGULAR ± 1.0°				1. INTERPRET DRAWING PER ASME Y14.5-1994. 2. REMOVE ALL SHARP EDGES, R.02 MIN. 3. DO NOT SCALE FROM DRAWING. 4. ALL MACHINING FLUIDS MUST BE FULLY SYNTHETIC, FULLY WATER SOLUBLE AND FREE OF SULFUR, SILICONE, AND CHLORINE.		aLIGO TMS	
						OPTICS TABLE SMALL CYLINDER MASS	
MATERIAL 304 SSSL				FINISH 63 μinch Ra		NEXT ASSY D1001160	
SYSTEM ADVANCED LIGO				SUB-SYSTEM AOS		DESIGNER K. MAILAND 16 DEC 2010	
CHECKER				DRAFTER M. MILLER 12/12/2010		SIZE DWG. NO. B D1003330	
APPROVAL				SCALE: 1:1		PROJECTION: SHEET 1 OF 1	