

NOTES CONTINUED:

5. SCRIBE, ENGRAVE (A VIBRATORY TOOL MAY BE USED), LASER MARK OR MECHANICALLY STAMP (NO INKS OR DYES) DRAWING PART NUMBER, REVISION (AND VARIANT OR 'TYPE' IF APPLICABLE) ON NOTED SURFACE OF PART FOLLOWED ON THE NEXT LINE WITH A THREE DIGIT SERIAL NUMBER. SERIAL NUMBERS START AT 001 FOR THE FIRST ARTICLE AND PROCEED CONSECUTIVELY. USE MINIMUM 0.12" HIGH CHARACTERS, UNLESS THE SIZE OF THE PART DICTATES SMALLER CHARACTERS. EXAMPLE: DXXXXXX-VY, TYPE-XX, S/N XXX

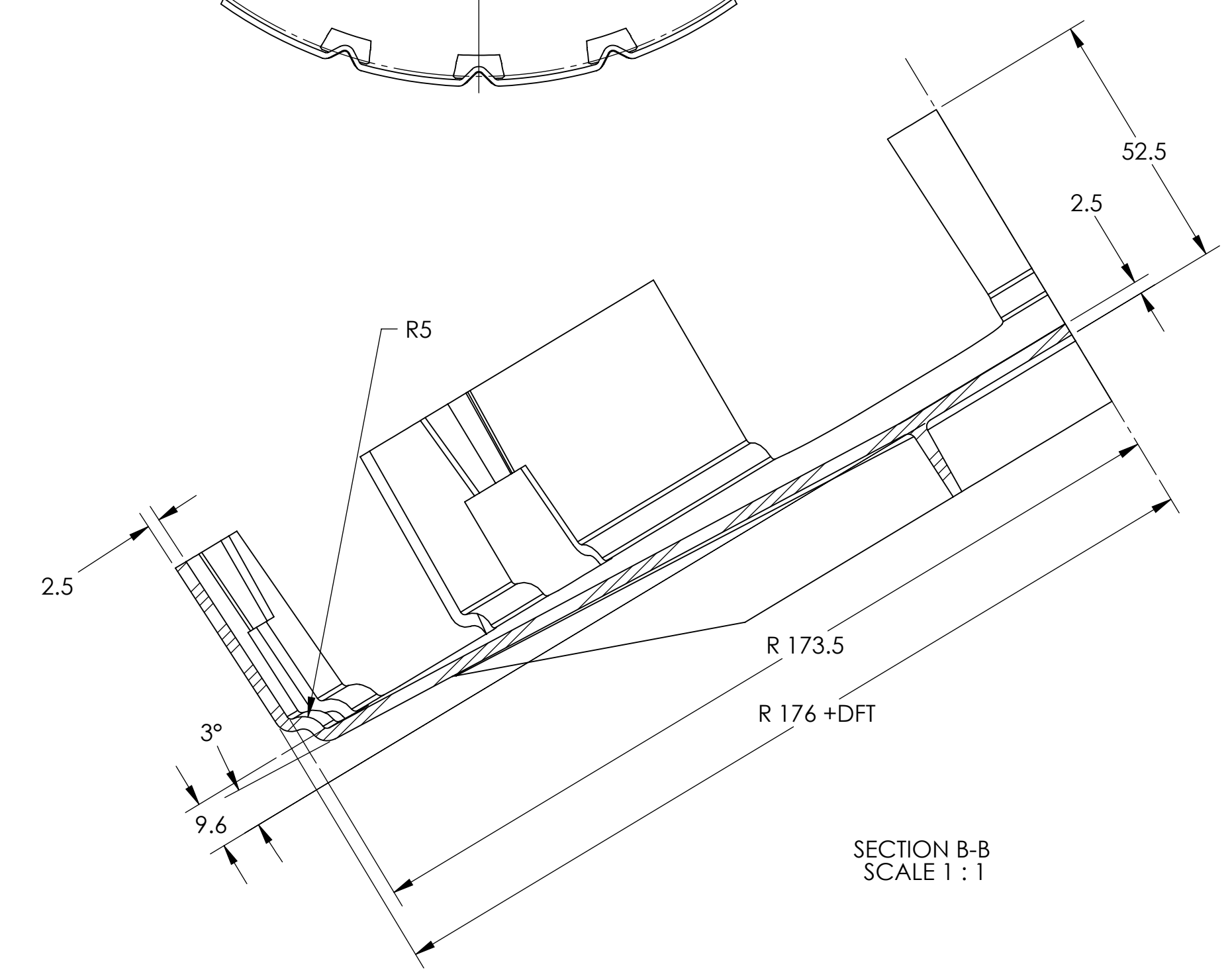
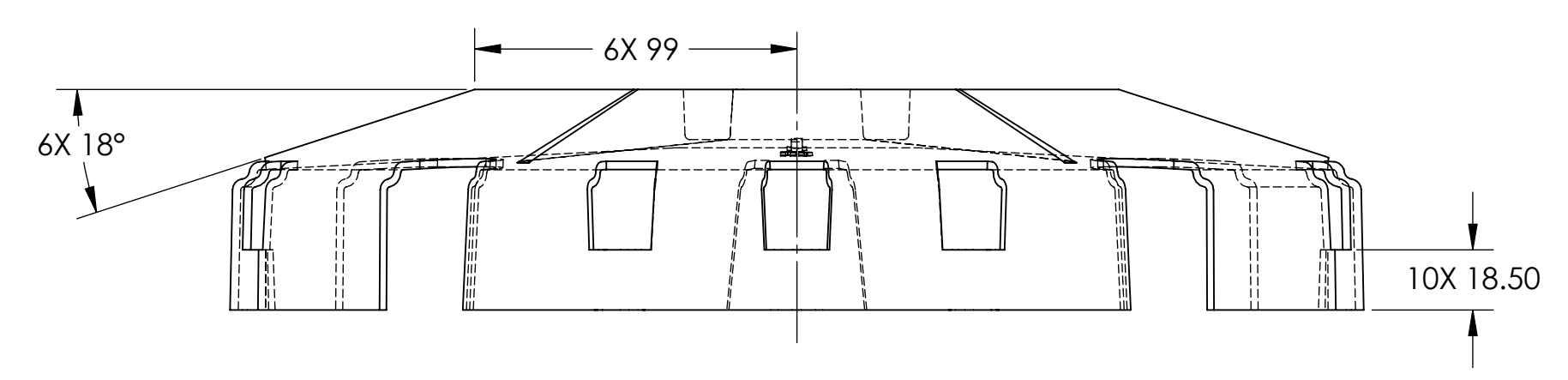
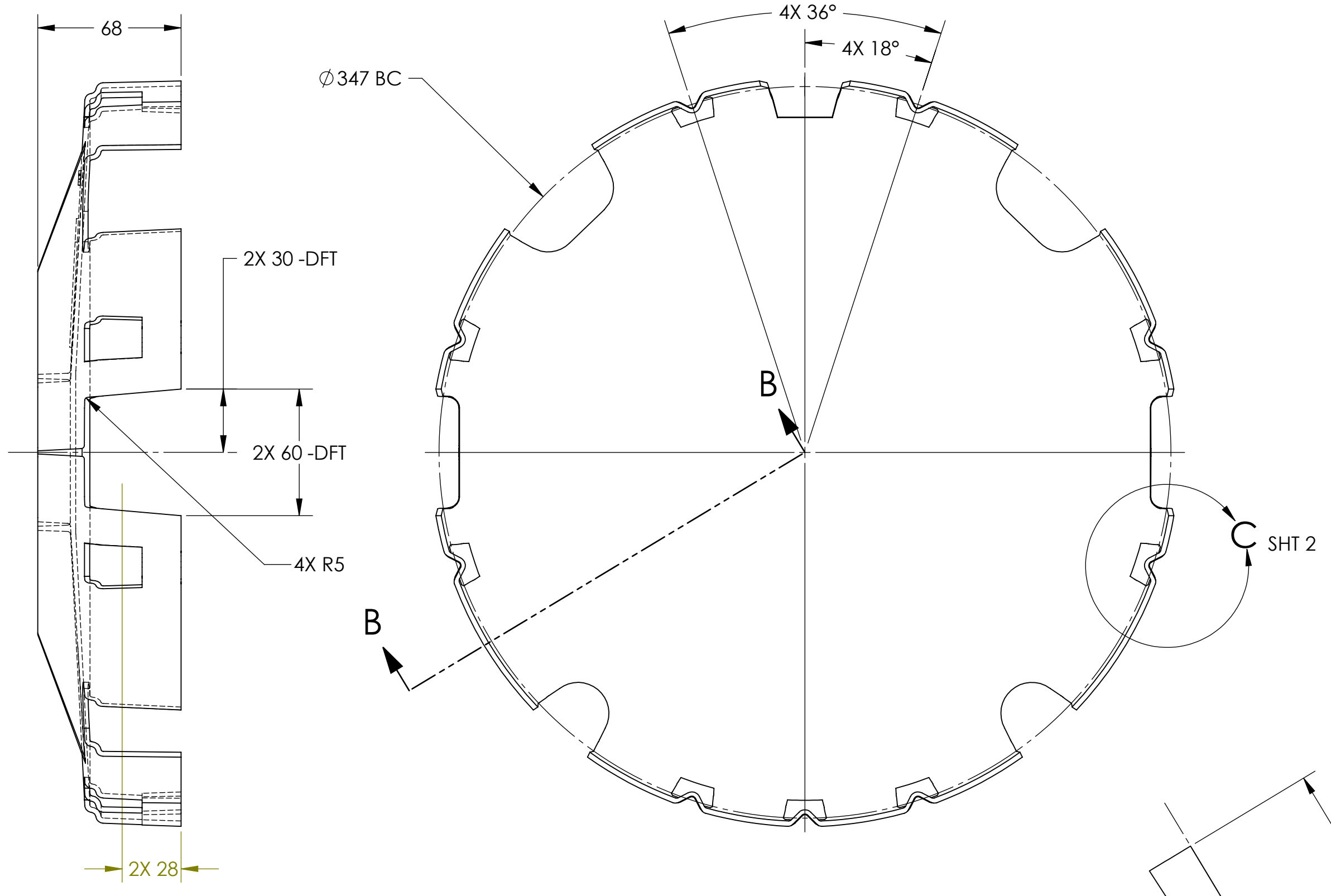
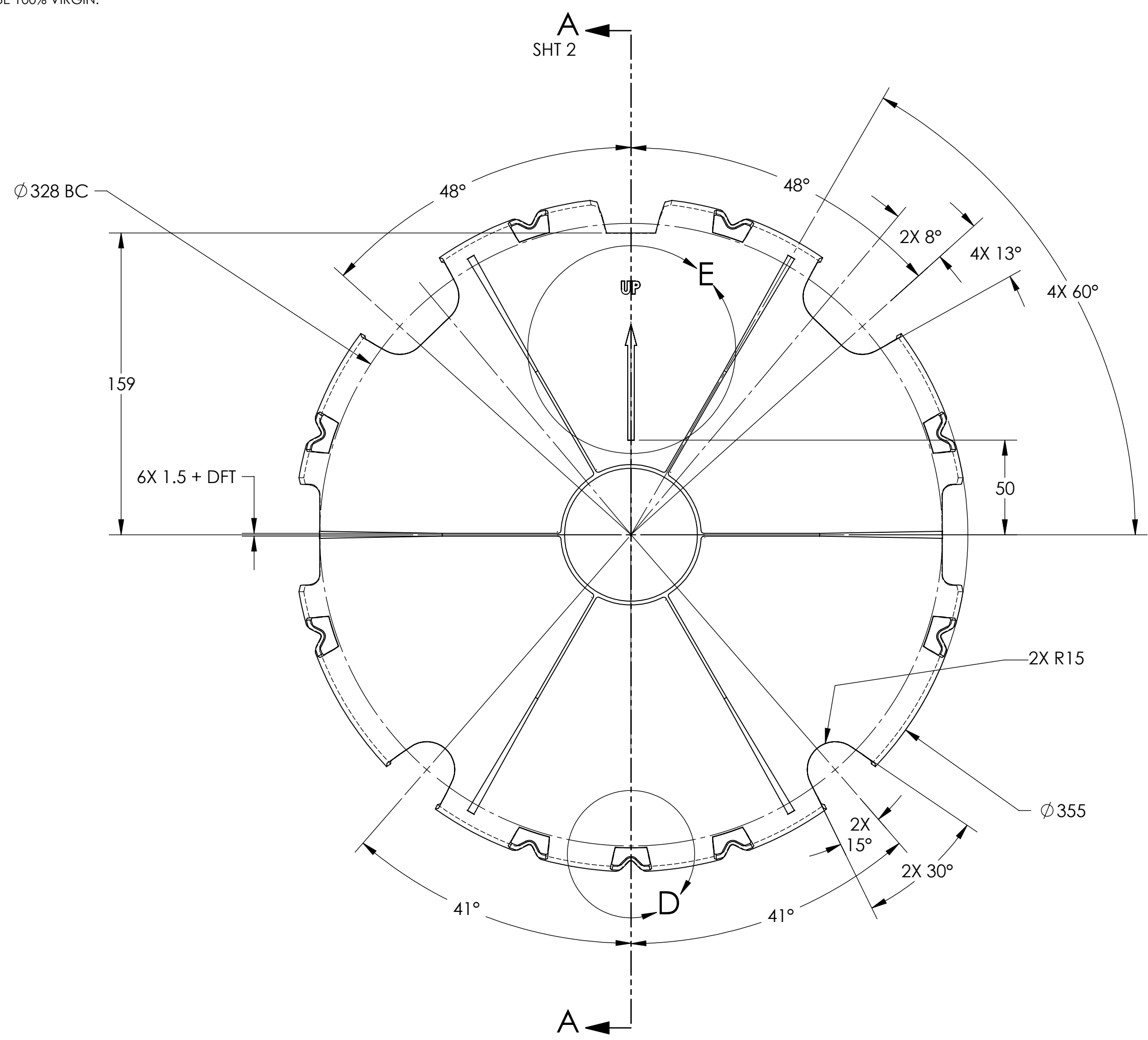
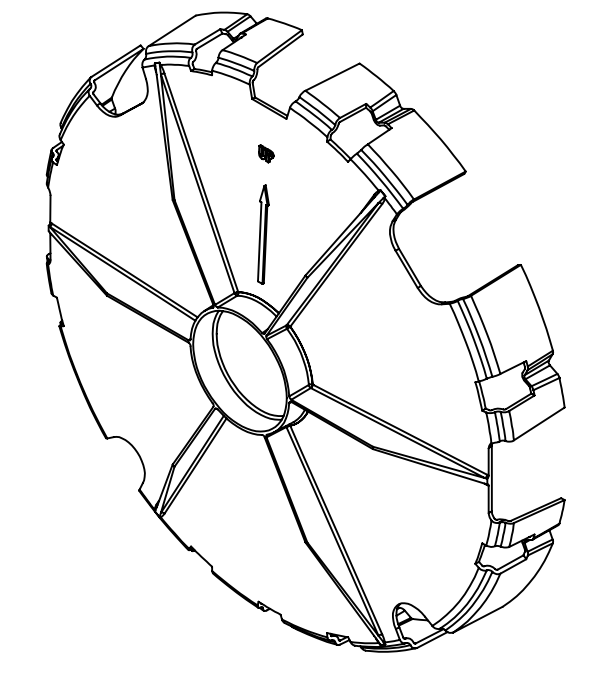
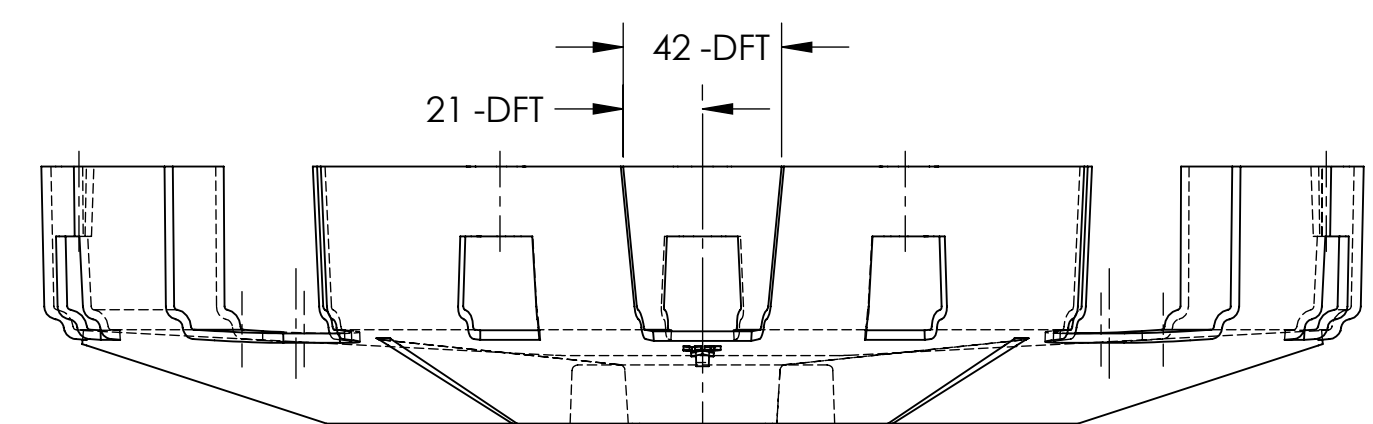
6. APPROXIMATE WEIGHT = 0.89 LB

7. DRAFT ANGLE: 2°

8. FILET RADI: 1.5

9. MATERIAL: POLYETHYLENE TEREPHTHALATE (PETG) (EASTMAN OR SK CHEMICAL) TO BE 100% VIRGIN. NO RE-GROUND ALLOWED.

| REV. | DATE | DCN # | DRAWING TREE # |
|------|-------------|----------|----------------|
| V1 | 9 MAR 2011 | E1100238 | - |
| V2 | 15 APR 2011 | E1100360 | - |
| - | - | - | - |



| | | | | | |
|--|----------|--|--|----------------|--|
| DIMENSIONS ARE IN MILLIMETERS | | TOLERANCES: .XX ± .25 .XXX ± .13 | | ANGULAR ± .05° | |
| NOTES AND TOLERANCES: (UNLESS OTHERWISE SPECIFIED) | | | | | |
| 1. INTERPRET DRAWING PER ASME Y14.5-1994. | | | | | |
| 2. REMOVE ALL SHARP EDGES, R.02 MIN. | | | | | |
| 3. DO NOT SCALE FROM DRAWING. | | | | | |
| 4. ALL MACHINING FLUIDS MUST BE FULLY SYNTHETIC, FULLY WATER SOLUBLE AND FREE OF SULFUR, SILICONE, AND CHLORINE. | | | | | |
| MATERIAL | FINISH | NEXT ASSY | | | |
| PETG | 63 µinch | | | | |

LIGO CALIFORNIA INSTITUTE OF TECHNOLOGY
MASSACHUSETTS INSTITUTE OF TECHNOLOGY

SYSTEM: ADVANCED LIGO SUB-SYSTEM: COC

| | | | | | | | | | | | |
|----------------|--|-------------|--|-------------|--|------------|--|-------------|--|--------------|--|
| PART NAME | | DESIGNER | | DATE | | SIZE | | DWG. NO. | | REV. | |
| ITM OPTICS CAP | | K. BUCKLAND | | 11 JAN 2011 | | D | | D1100052 | | v2 | |
| DRAFTER | | CHECKER | | APPROVAL | | SCALE: 1:2 | | PROJECTION: | | SHEET 1 OF 2 | |
| K. BUCKLAND | | | | | | | | | | | |

D1100052.dwg, COC, ITM-EM OPTICS CAP, PART PDM REV: X-003, DRAWING PDM REV: X-004

8

7

6

5

4

3

2

1

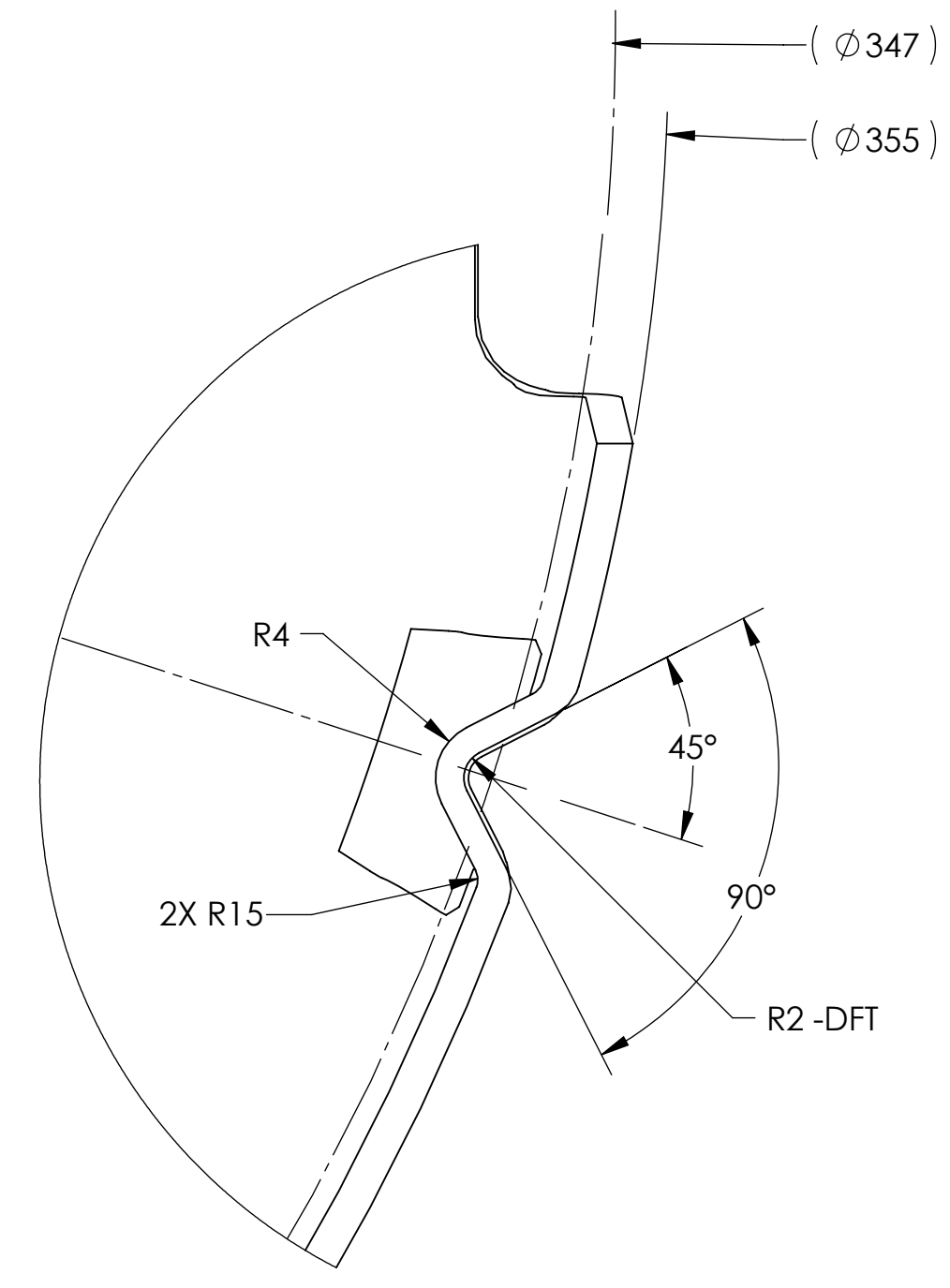
2.50
TYP WALL
2X 1

18.50

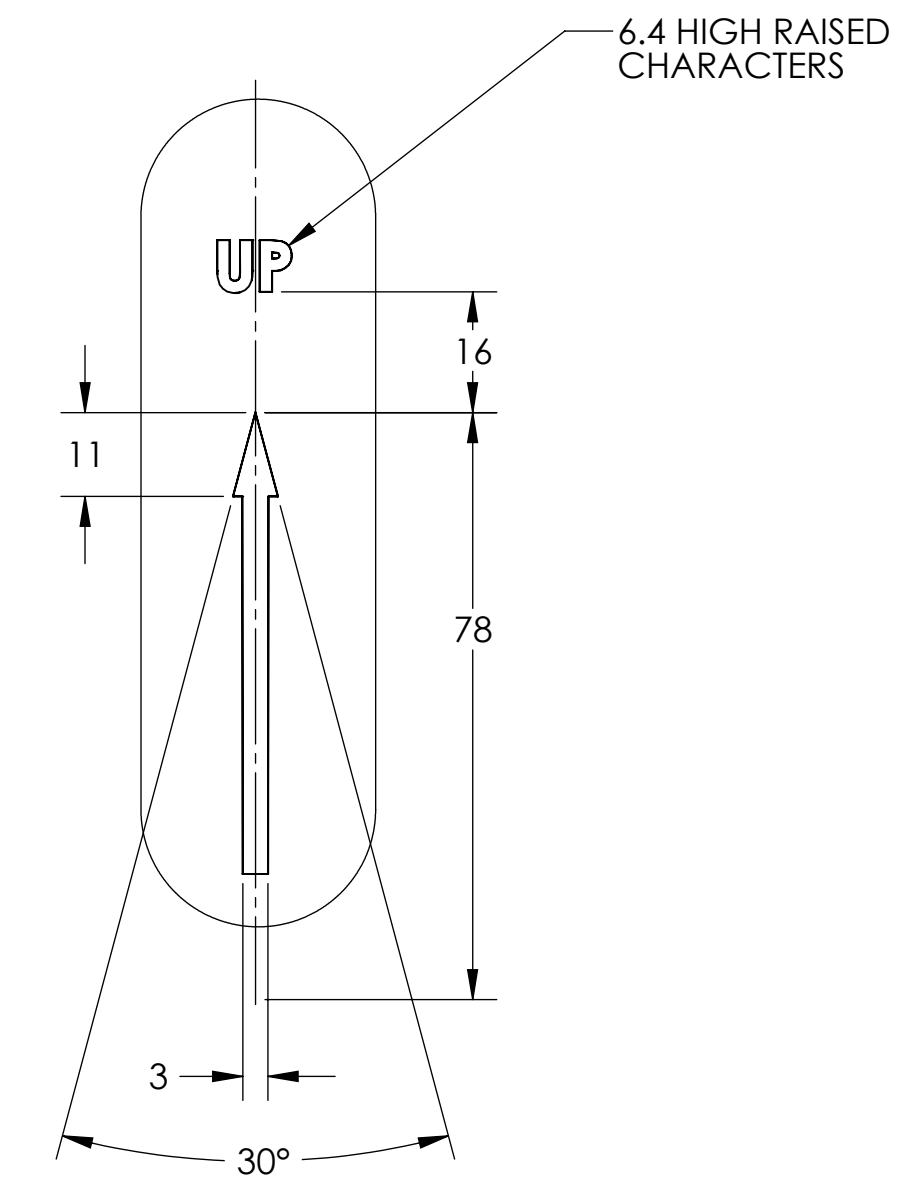
2 + DFT

Ø 70 - DFT

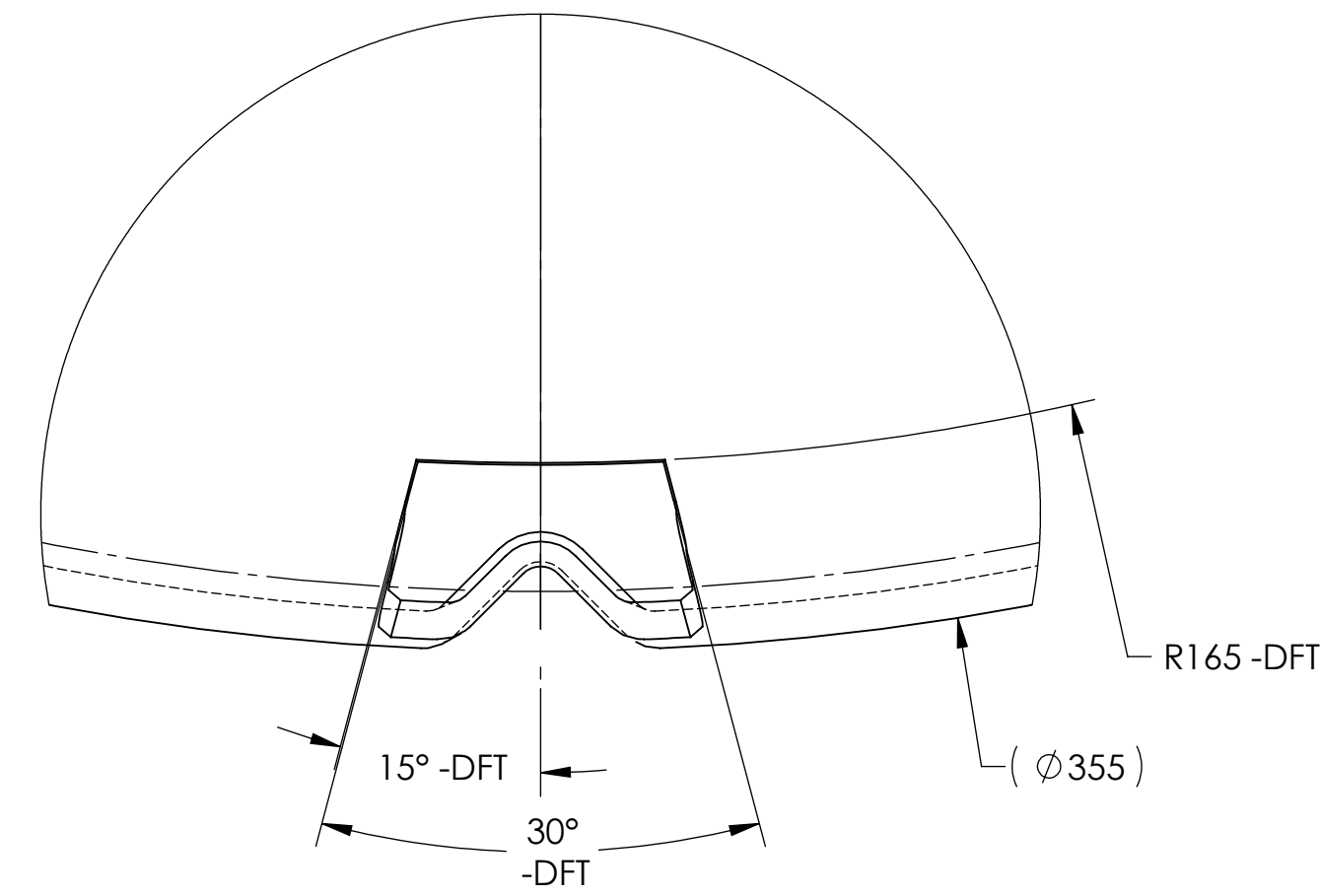
SECTION A-A
SCALE 1 : 1



DETAIL C
SCALE 2 : 1
10X



DETAIL E
SCALE 1 : 1



DETAIL D
SCALE 2 : 1
10X

| | | |
|---|-------------|--------------|
| LIGO CALIFORNIA INSTITUTE OF TECHNOLOGY MASSACHUSETTS INSTITUTE OF TECHNOLOGY | | REV. |
| SIZE | DWG. NO. | REV. |
| D | D1100052 | v2 |
| SCALE: 1:2 | PROJECTION: | SHEET 2 OF 2 |

D:\10052.dwg; COC; ITEM; OPTICS CAP; PART; PDM; REV; X;03; DRAWING; PDM; REV; X;04