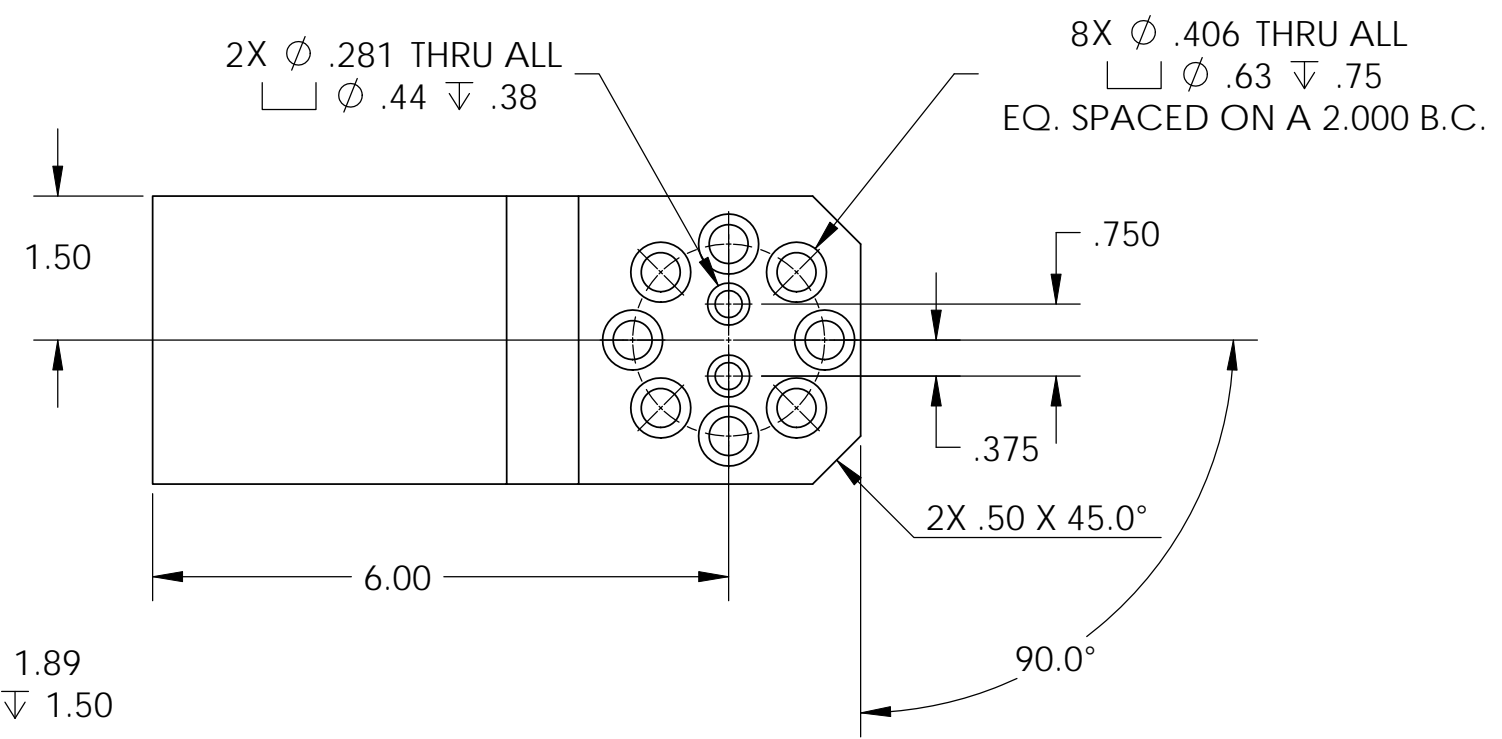
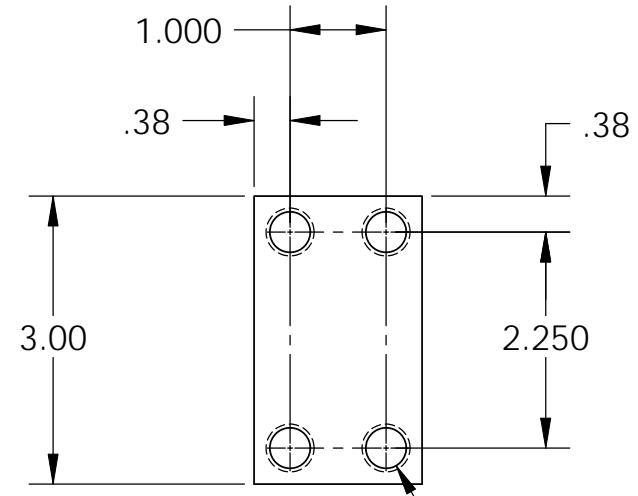
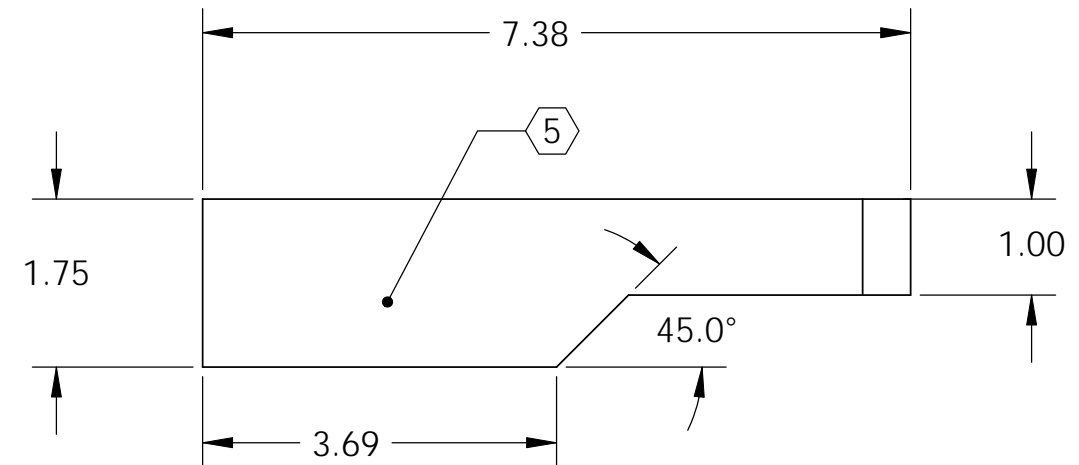


REV.	DATE	DCN #	DRAWING TREE #
v1	19 Jan. 2011	E1100045	-

NOTES CONTINUED:

- 4. ALL MACHINING FLUIDS MUST BE FULLY SYNTHETIC, FULLY WATER SOLUBLE AND FREE OF SULFUR, SILICONE AND CHLORINE.
- 5. SCRIBE, ENGRAVE, OR MECHANICALLY STAMP (NO INKS OR DYES) DRAWING PART NUMBER, REVISION (AND VARIANT OR "TYPE" IF APPLICABLE) ON NOTED SURFACE OF PART FOLLOWED ON THE NEXT LINE WITH A THREE DIGIT SERIAL NUMBER. SERIAL NUMBERS START AT 001 FOR THE FIRST ARTICLE AND PROCEED CONSECUTIVELY. USE MINIMUM 0.12 HIGH CHARACTERS, UNLESS THE SIZE OF THE PART DICTATES SMALLER CHARACTERS. A VIBRATORY TOOL MAY BE USED. EXAMPLE DXXXXXXX-VY, TYPE-XX, S/N XXX.
- 6. APPROXIMATE WEIGHT = 3.489 LB.
- 7. ALL PARTS SHALL BE MANUFACTURED IN ACCORDANCE WITH LIGO SPECIFICATION E0900364.



NOTES AND TOLERANCES: (UNLESS OTHERWISE SPECIFIED)				LIGO CALIFORNIA INSTITUTE OF TECHNOLOGY MASSACHUSETTS INSTITUTE OF TECHNOLOGY		PART NAME	
DIMENSIONS ARE IN INCHES		1. INTERPRET DRAWING PER ASME Y14.5-1994.		ADVANCED LIGO		SUB-SYSTEM SEI	
TOLERANCES: .XX ± .015 .XXX ± .005		2. REMOVE ALL SHARP EDGES, .03 x 45°.		MATERIAL Alloy Steel		FINISH 63 μinch	
ANGULAR ± .5°		3. DO NOT SCALE FROM DRAWING.		NEXT ASSY D1100077		DESIGNER M.HILLARD 14 Jan. 2011	
						DRAFTER M.HILLARD 18 Jan. 2011	
						CHECKER M.MATICHARD 19 Jan. 2011	
						APPROVAL K.MASON 19 Jan. 2011	
				SCALE: 1:2		PROJECTION:	
						SHEET 1 OF 1	

D1100058 HAM SUPPORT TUBE MOUNT BLOCK, PART PDM REV: X-002, DRAWING PDM REV: X-001