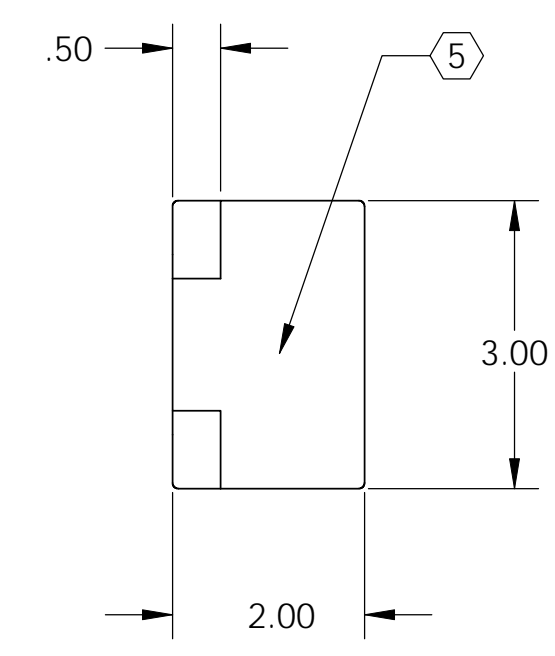
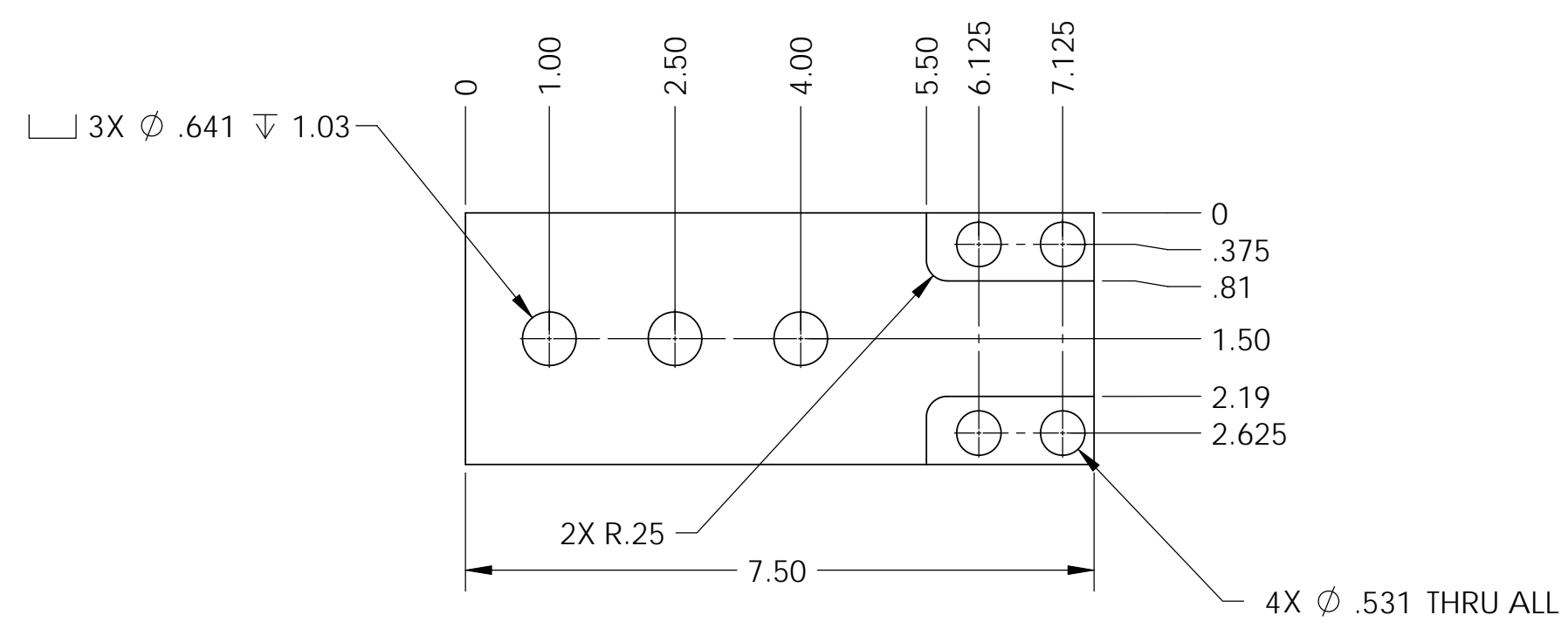


REV.	DATE	DCN #	DRAWING TREE #
v1	18 Jan 2011	E1100045	-

NOTES CONTINUED:

- 4. ALL MACHINING FLUIDS MUST BE FULLY SYNTHETIC, FULLY WATER SOLUBLE AND FREE OF SULFUR, SILICONE AND CHLORINE.
- 5. SCRIBE, ENGRAVE, OR MECHANICALLY STAMP (NO INKS OR DYES) DRAWING PART NUMBER, REVISION (AND VARIANT OR "TYPE" IF APPLICABLE ON NOTED SURFACE OF PART FOLLOWED ON THE NEXT LINE WITH A THREE DIGIT SERIAL NUMBER. SERIAL NUMBERS START AT 001 FOR THE FIRST ARTICLE AND PROCEED CONSECUTIVELY. USE MINIMUM 0.12 HIGH CHARACTERS, UNLESS THE SIZE OF THE PART DICTATES SMALLER CHARACTERS. A VIBRATORY TOOL MAY BE USED. EXAMPLE DXXXXXXX-VY, TYPE-XX, S/N XXX.
- 6. APPROXIMATE WEIGHT = 5.179 LB.
- 7. ALL PARTS SHALL BE MANUFACTURED IN ACCORDANCE WITH LIGO SPECIFICATION E0900364.



D1100059 HAM SUPPORT TUBE LEG, PART PDM REV: X-002, DRAWING PDM REV: X-001

NOTES AND TOLERANCES: (UNLESS OTHERWISE SPECIFIED)				LIGO CALIFORNIA INSTITUTE OF TECHNOLOGY MASSACHUSETTS INSTITUTE OF TECHNOLOGY		PART NAME	
DIMENSIONS ARE IN INCHES		1. INTERPRET DRAWING PER ASME Y14.5-1994.		ADVANCED LIGO		SEI	
TOLERANCES: .XX ± .015 .XXX ± .005		2. REMOVE ALL SHARP EDGES, .03 x 45°.		DESIGNER M.HILLARD 14 Jan. 2011		SIZE DWG. NO.	
ANGULAR ± .5°		3. DO NOT SCALE FROM DRAWING.		DRAFTER M.HILLARD 18 Jan 2011		B D1100059	
MATERIAL Alloy Steel		FINISH 63 μinch		CHECKER F.MATICHARD 18 Jan 2011		REV. v1	
		NEXT ASSY D1100077		APPROVAL K.MASON 18 Jan 2011		SCALE: 1:2 PROJECTION: SHEET 1 OF 1	