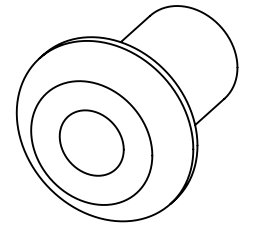
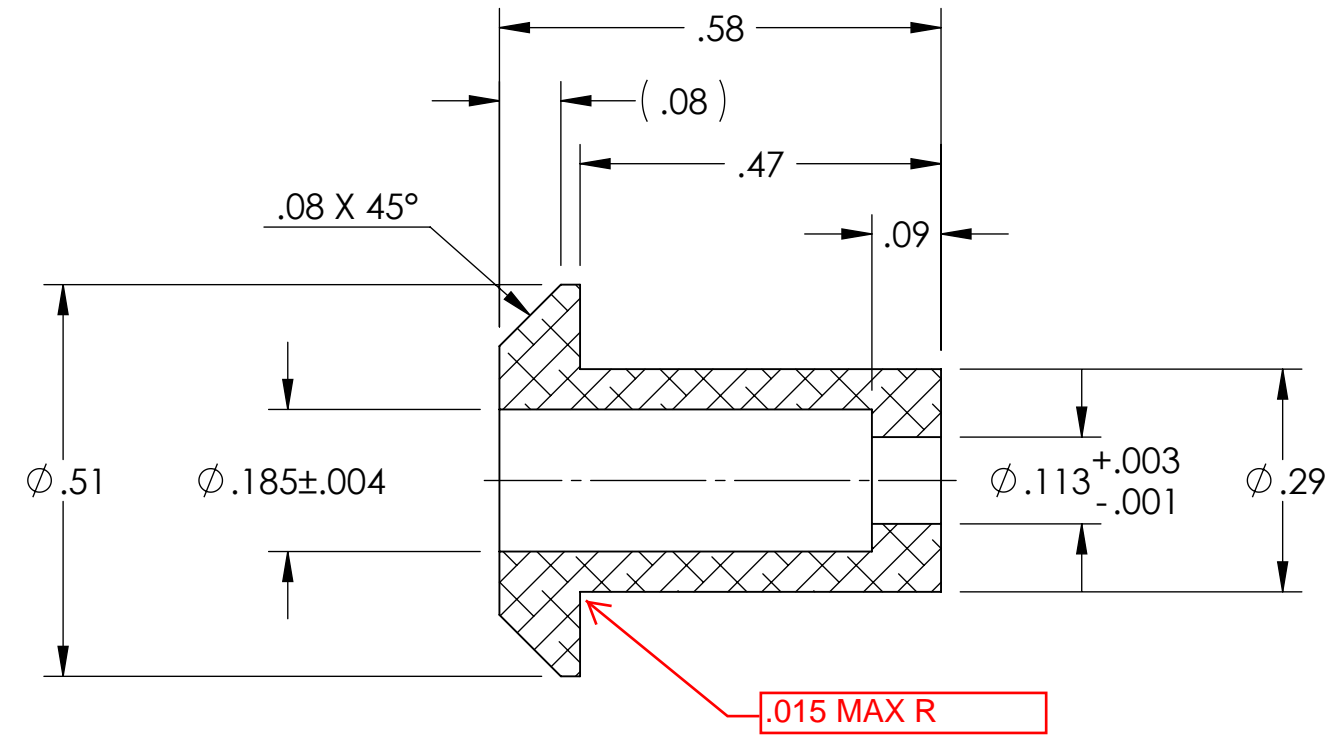
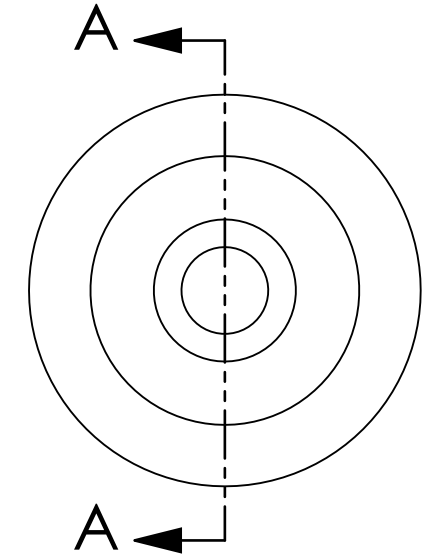
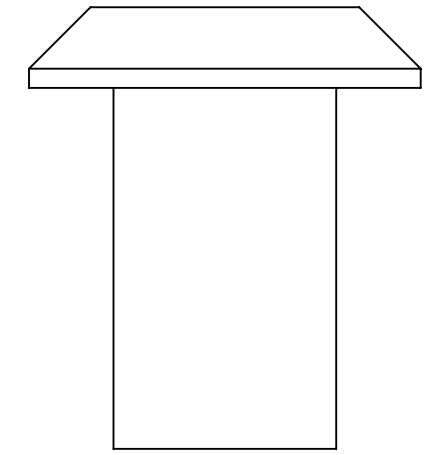


NOTES CONTINUED:
 5. BAG AND TAG PARTS SEPARATELY WITH THEIR DRAWING PART NUMBER, REVISION, AND SERIAL NUMBER. SERIAL NUMBERS START AT 001 (UNLESS OTHERWISE SPECIFIED) FOR THE FIRST ARTICLE AND PROCEED CONSECUTIVELY.
 EXAMPLE:
 DXXXXXX-vY
 S/N-001
 6. APPROXIMATE WEIGHT = .003 lb [1.5 g].
 7. MACHINE ALL SURFACES TO REMOVE OXIDES AND MILL FINISH. USE OF ABRASIVE REMOVAL TECHNIQUES IS NOT ALLOWED.
 8. ALL PARTS SHALL BE MANUFACTURED IN ACCORDANCE WITH LIGO SPECIFICATION E0900364.
 9. ALL MATERIAL IS TO BE VIRGIN MATERIAL (i.e. NO WELD REPAIRS OR PLUGS UNLESS APPROVED IN ADVANCE IN WRITING BY LIGO). REFER TO LIGO SPECIFICATION E0900364.

REV.	DATE	DCN #	DRAWING TREE #
v1	24 JAN 2011	E1100062-v1	-
-	-	-	-



SECTION A-A



NOTES AND TOLERANCES: (UNLESS OTHERWISE SPECIFIED)				LIGO CALIFORNIA INSTITUTE OF TECHNOLOGY MASSACHUSETTS INSTITUTE OF TECHNOLOGY		PART NAME	
DIMENSIONS ARE IN INCHES				SYSTEM		TMS TELESCOPE	
TOLERANCES: .XX ± .01 .XXX ± .005				ADVANCED LIGO		SECONDARY MIRROR CLAMP	
ANGULAR ± 1.0°				SUB-SYSTEM		REV.	
MATERIAL 6061-T6 Al				AOS		v1	
FINISH 63 μinch Ra				NEXT ASSY D1002210		SCALE: 4:1 PROJECTION:	
1. INTERPRET DRAWING PER ASME Y14.5-1994.				DESIGNER K. MAILAND 21 JAN 2011		SIZE DWG. NO.	
2. REMOVE ALL SHARP EDGES, R.02 MIN.				DRAFTER M. MILLER 12/17/2010		B D1100114	
3. DO NOT SCALE FROM DRAWING.				CHECKER		SHEET 1 OF 1	
4. ALL MACHINING FLUIDS MUST BE FULLY SYNTHETIC, FULLY WATER SOLUBLE AND FREE OF SULFUR, SILICONE, AND CHLORINE.				APPROVAL			

D1100114 TMS Telescope Secondary Mirror Clamp, PART PDM REV: X-003, DRAWING PDM REV: X-010