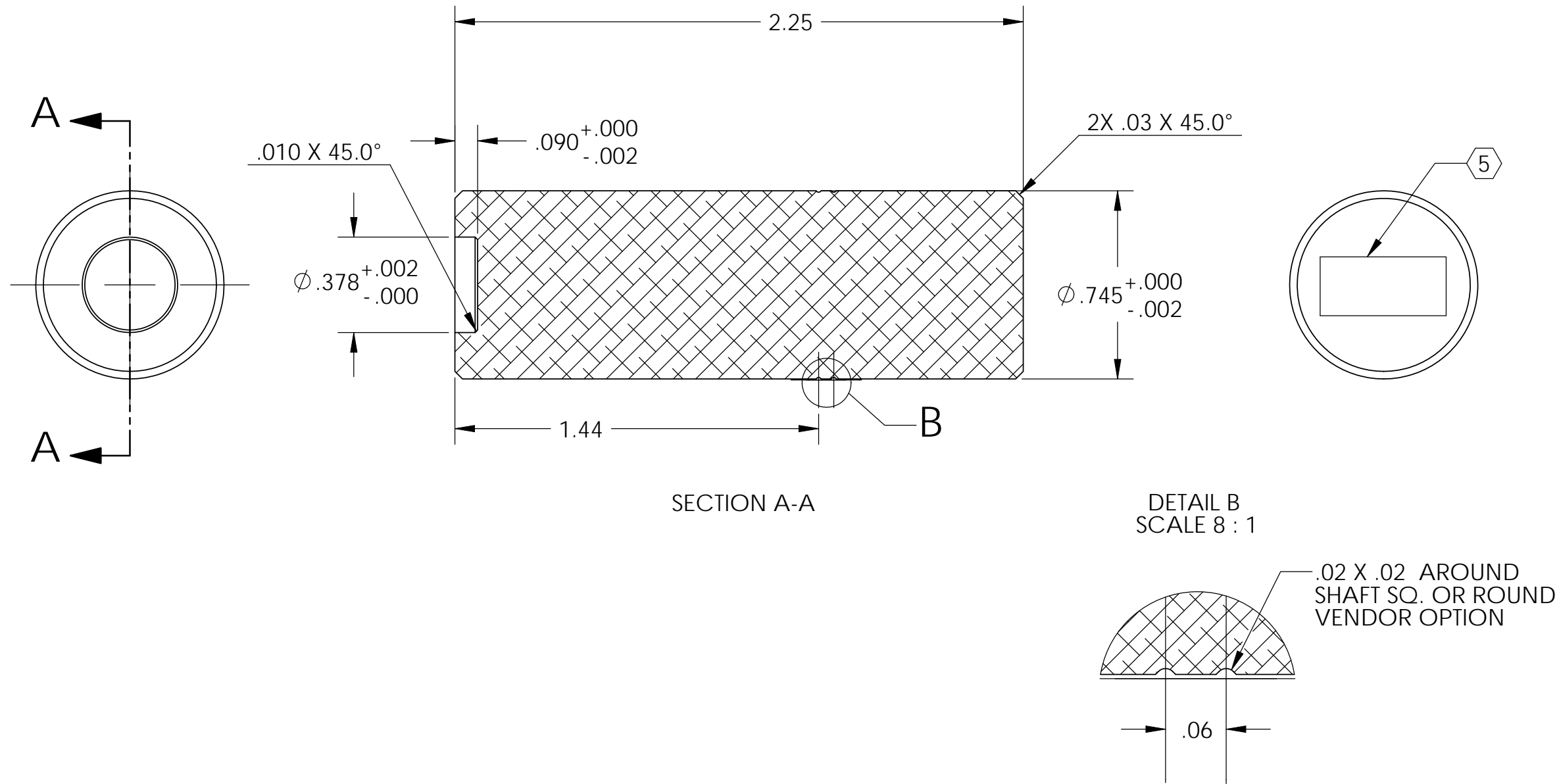


D1100233 DOWEL INSTALLATION PUNCH, .38 DIA. C71500, aLIGO BSC ISI, PART PDM REV: X-000, DRAWING PDM REV: X-000

NOTES CONTINUED:

- ⑤ SCRIBE, ENGRAVE, OR MECHANICALLY STAMP (NO INKS OR DYES) DRAWING PART NUMBER, REVISION (AND VARIANT OR "TYPE" IF APPLICABLE ON NOTED SURFACE OF PART FOLLOWED ON THE NEXT LINE WITH A THREE DIGIT SERIAL NUMBER. SERIAL NUMBERS START AT 001 FOR THE FIRST ARTICLE AND PROCEED CONSECUTIVELY. USE MINIMUM 0.12 HIGH CHARACTERS, UNLESS THE SIZE OF THE PART DICTATES SMALLER CHARACTERS. A VIBRATORY TOOL MAY BE USED. EXAMPLE DXXXXXX-VY, TYPE-XX, S/N XXX.
- 6. APPROXIMATE WEIGHT = 0.142 LB.
- 7. MACHINE ALL SURFACES TO REMOVE OXIDES AND MILL FINISH. USE OF ABRASIVE REMOVAL TECHNIQUES (INCLUDING SANDING OR SCOURING FOR MATTE FINISH) IS NOT ALLOWED.
- 8. ALL PARTS SHALL BE MANUFACTURED IN ACCORDANCE WITH LIGO SPECIFICATION E0900364.

REV.	DATE	DCN #	DRAWING TREE #
v1	08 Feb. 2011	E1100087	-



NOTES AND TOLERANCES: (UNLESS OTHERWISE SPECIFIED)				LIGO CALIFORNIA INSTITUTE OF TECHNOLOGY MASSACHUSETTS INSTITUTE OF TECHNOLOGY		PART NAME					
DIMENSIONS ARE IN INCHES				ADVANCED LIGO		DOWEL INSTALLATION PUNCH, 3/8 DIA, C71500, aLIGO BSC ISI					
TOLERANCES: .XX ± .015 .XXX ± .005				SEI		DESIGNER	M.HILLARD	08 Feb. 2011	SIZE	DWG. NO.	REV.
ANGULAR ± .5°				NEXT ASSY		DRAFTER	M.HILLARD	08 Feb. 2011	B	D1100233	v1
MATERIAL C71500				FINISH 32 μinch		CHECKER	MATICHARD	08 Feb. 2011	SCALE: 2:1	PROJECTION:	SHEET 1 OF 1
						APPROVAL	K.MASON	08 Feb. 2011			