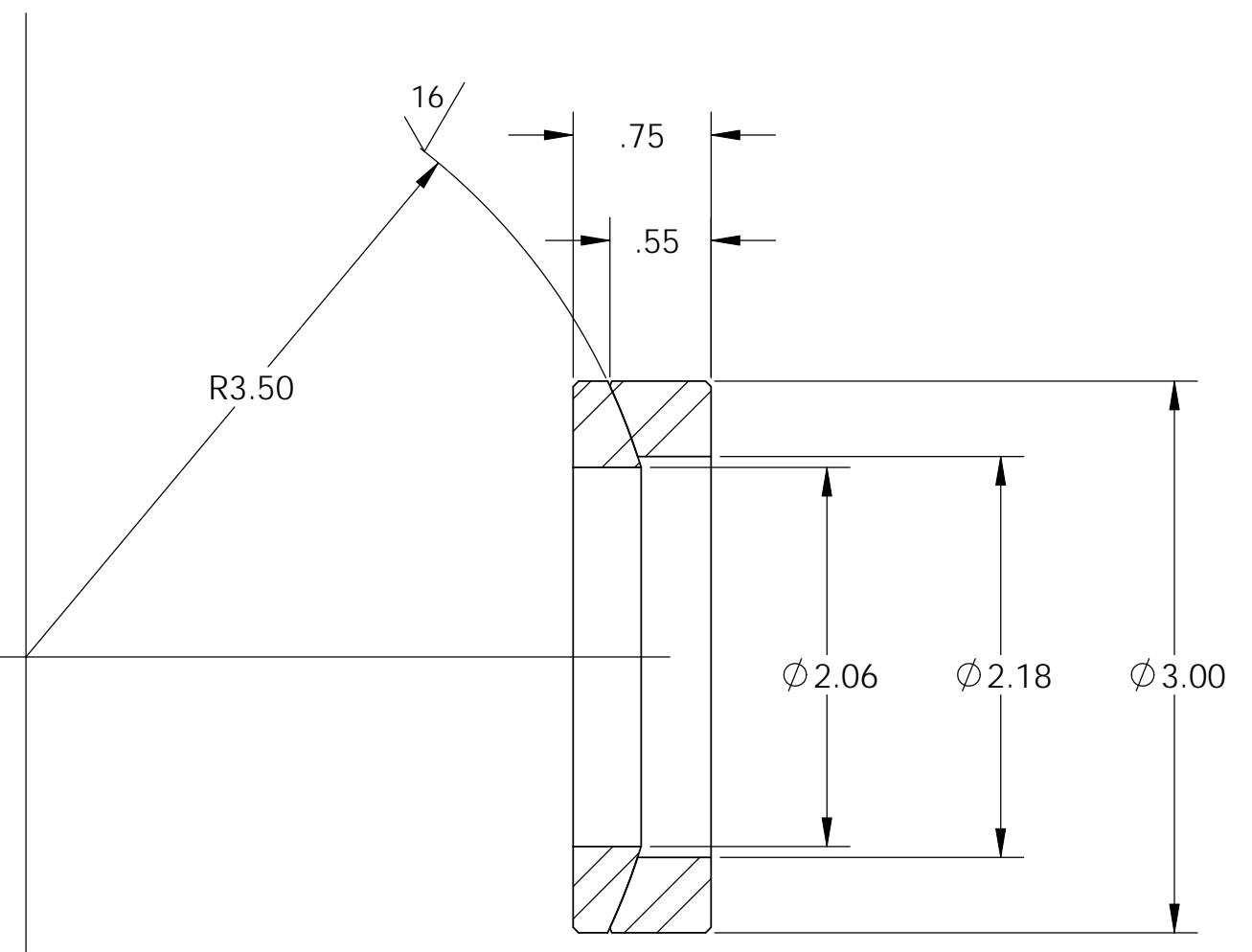
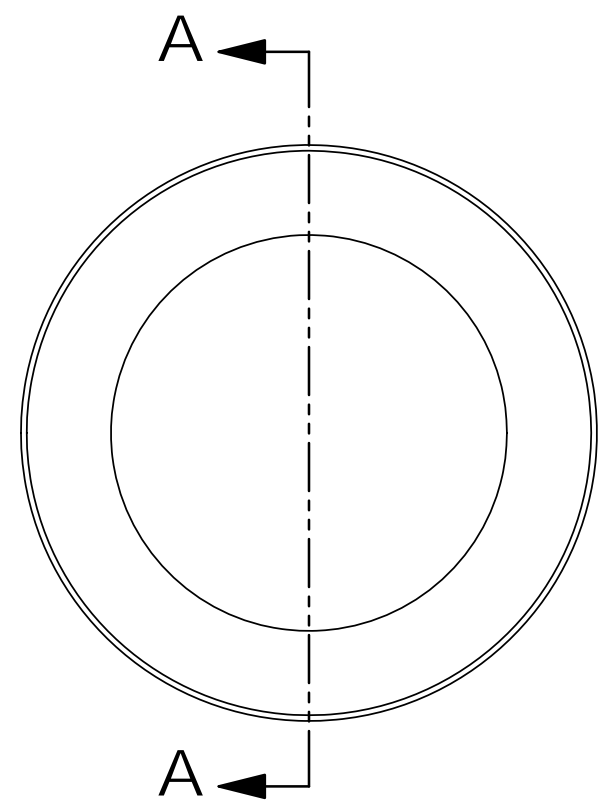


D1100254 HEPI SPHERICAL WASHER SET, aLIGO HAM, PART PDM REV: X-003, DRAWING PDM REV: X-000

REV.	DATE	DCN #	DRAWING TREE #
v1	23 Mar 2011	E1100015	E1100016

NOTES CONTINUED:

- 4. ALL MACHINING FLUIDS MUST BE FULLY SYNTHETIC, FULLY WATER SOLUBLE AND FREE OF SULFUR, SILICONE AND CHLORINE.
- 5. SCRIBE, ENGRAVE, OR MECHANICALLY STAMP (NO INKS OR DYES) DRAWING PART NUMBER, REVISION (AND VARIANT OR "TYPE" IF APPLICABLE ON NOTED SURFACE OF PART FOLLOWED ON THE NEXT LINE WITH A THREE DIGIT SERIAL NUMBER. SERIAL NUMBERS START AT 001 FOR THE FIRST ARTICLE AND PROCEED CONSECUTIVELY. USE MINIMUM 0.12 HIGH CHARACTERS, UNLESS THE SIZE OF THE PART DICTATES SMALLER CHARACTERS. A VIBRATORY TOOL MAY BE USED. EXAMPLE DXXXXXXX-VY, TYPE-XX, S/N XXX.
- 6. APPROXIMATE WEIGHT = 0.332 LB.
- 7. ALL PARTS SHALL BE MANUFACTURED IN ACCORDANCE WITH LIGO SPECIFICATION E0900364.
- 8. DEGREE OF ACCURACY 95% GG.



NOTES AND TOLERANCES: (UNLESS OTHERWISE SPECIFIED)				LIGO CALIFORNIA INSTITUTE OF TECHNOLOGY MASSACHUSETTS INSTITUTE OF TECHNOLOGY		PART NAME				
DIMENSIONS ARE IN INCHES		1. INTERPRET DRAWING PER ASME Y14.5-1994.		ADVANCED LIGO		SUB-SYSTEM		HEPI SPHERICAL WASHER SET, aLIGO HAM		REV.
TOLERANCES: .XX ± .015 .XXX ± .005		2. REMOVE ALL SHARP EDGES, .03 x 45°.		SEI		DESIGNER	H.RADKINS	10 Mar. 2009	SIZE	DWG. NO.
ANGULAR ± .5°		3. DO NOT SCALE FROM DRAWING.		MATERIAL		DRAFTER	M.HILLARD	23 Mar. 2011	B	D1100254
		FINISH		NEXT ASSY		CHECKER	K.MASON	23 Mar 2011	SCALE:	1:1
		63 μinch		D1003359		APPROVAL	K.MASON	23 Mar 2011	PROJECTION:	1st Angle
								SHEET 1 OF 1		