

Detector Characterization of GEO600

LSC Meeting 10, Livingston

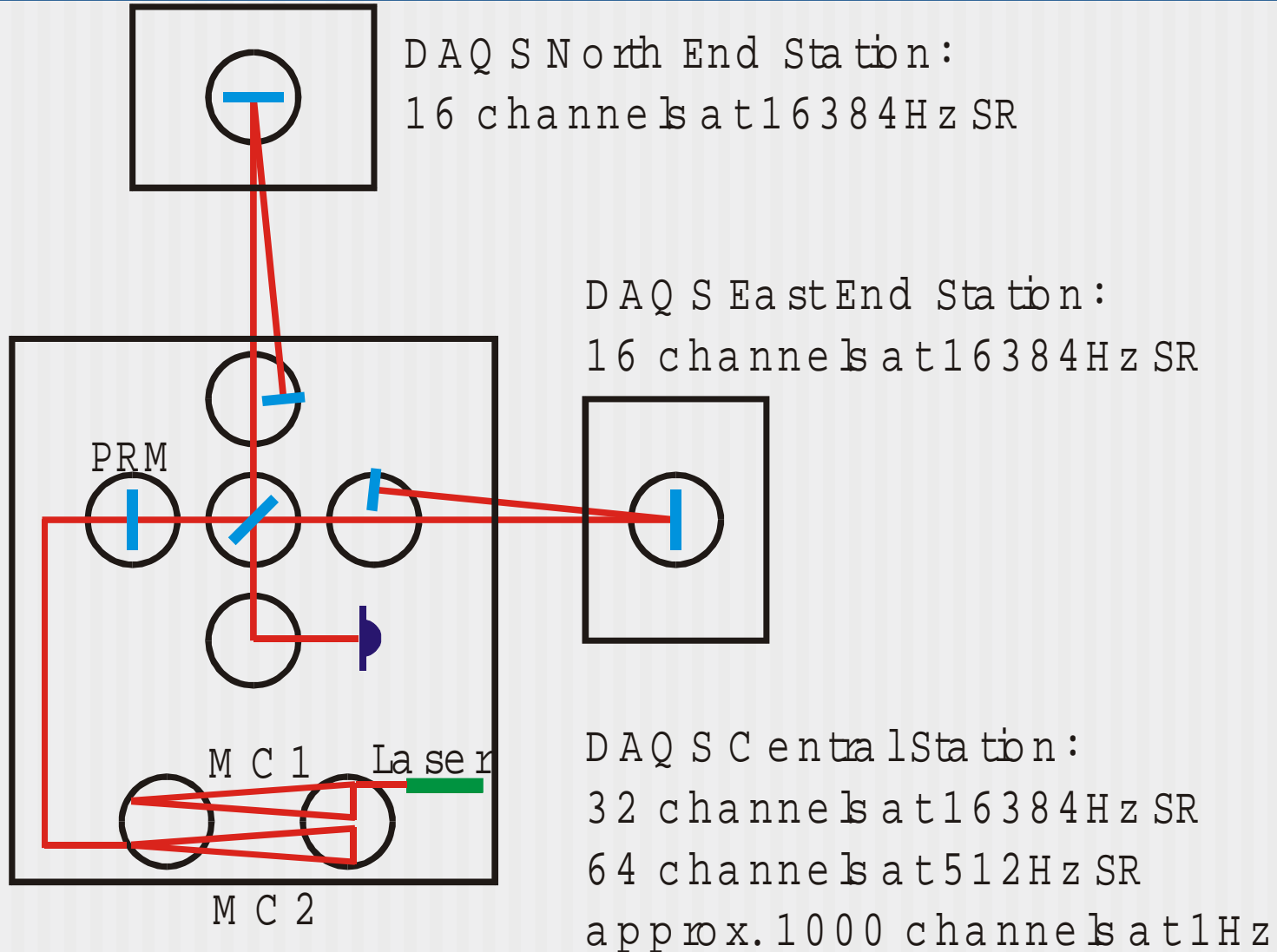
2002-03-23

Karsten Kötter and the GEO600 Team

LIGO-G020149-00-Z



Configuration



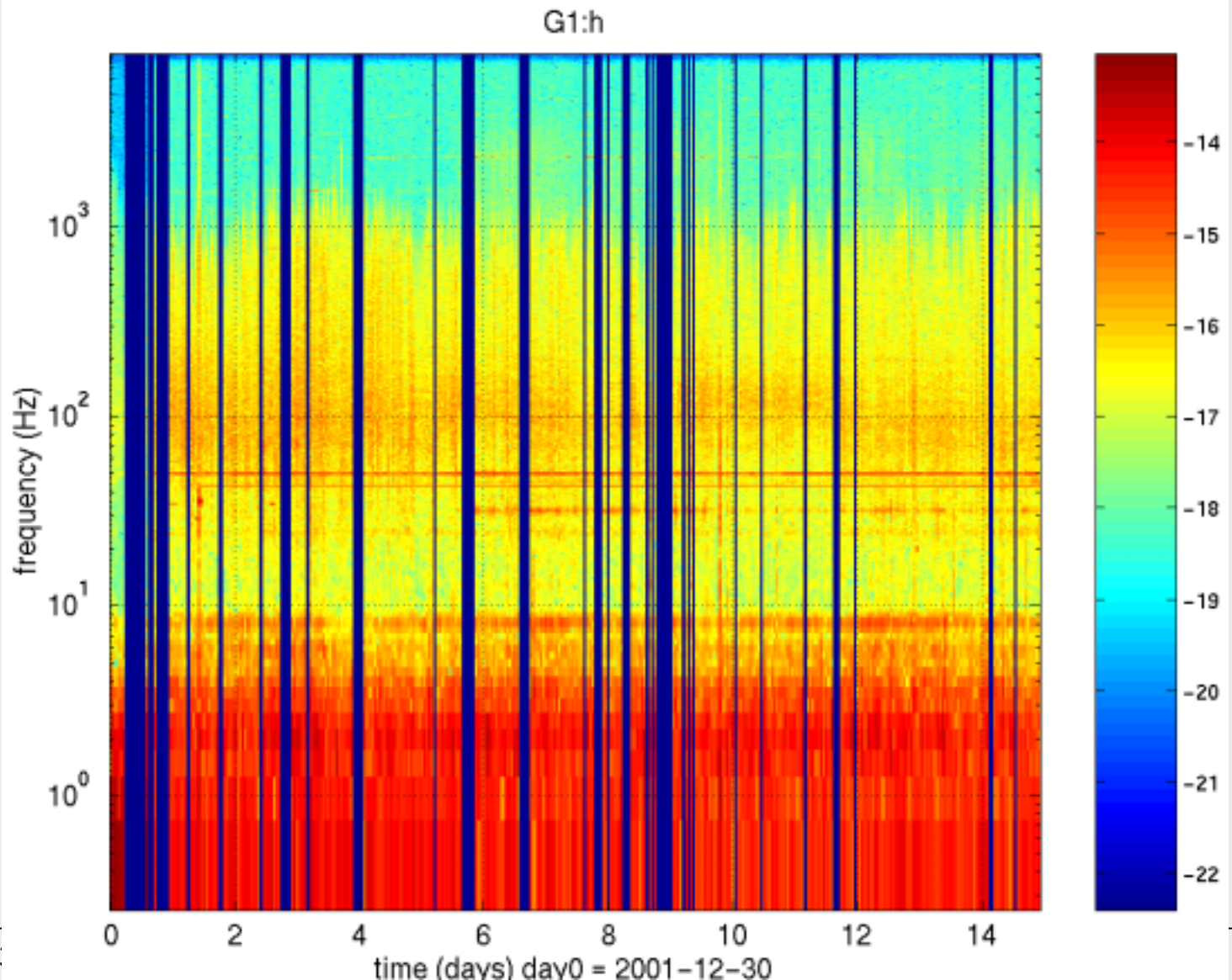


environmental channels

- magnetic field
- seismic motion
 - foundation
 - suspension system
- acoustics (air/tanks)
- power line
- indoor/outdoor temperature
- wind speed/direction
- air pressure

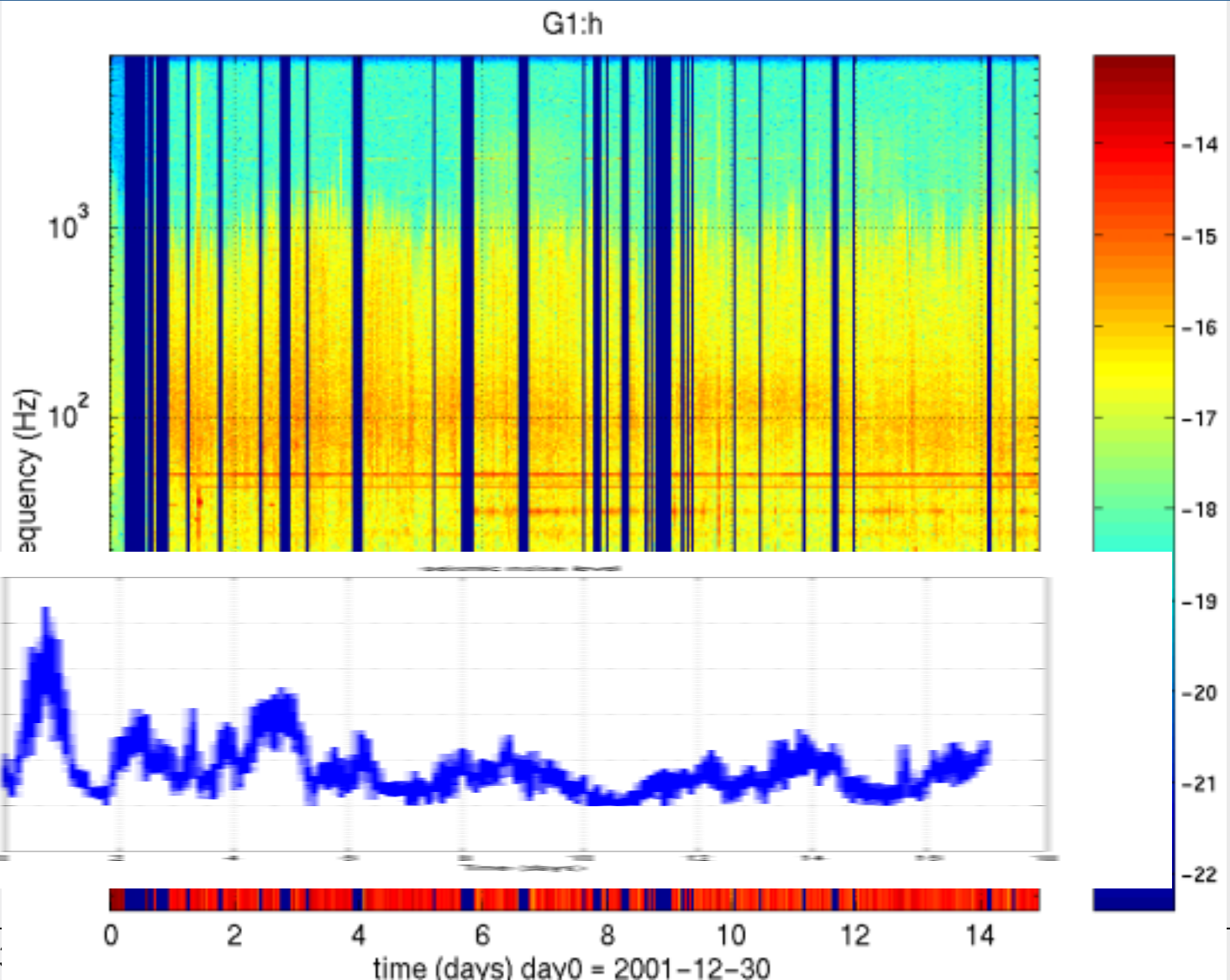


performance during coincidence run



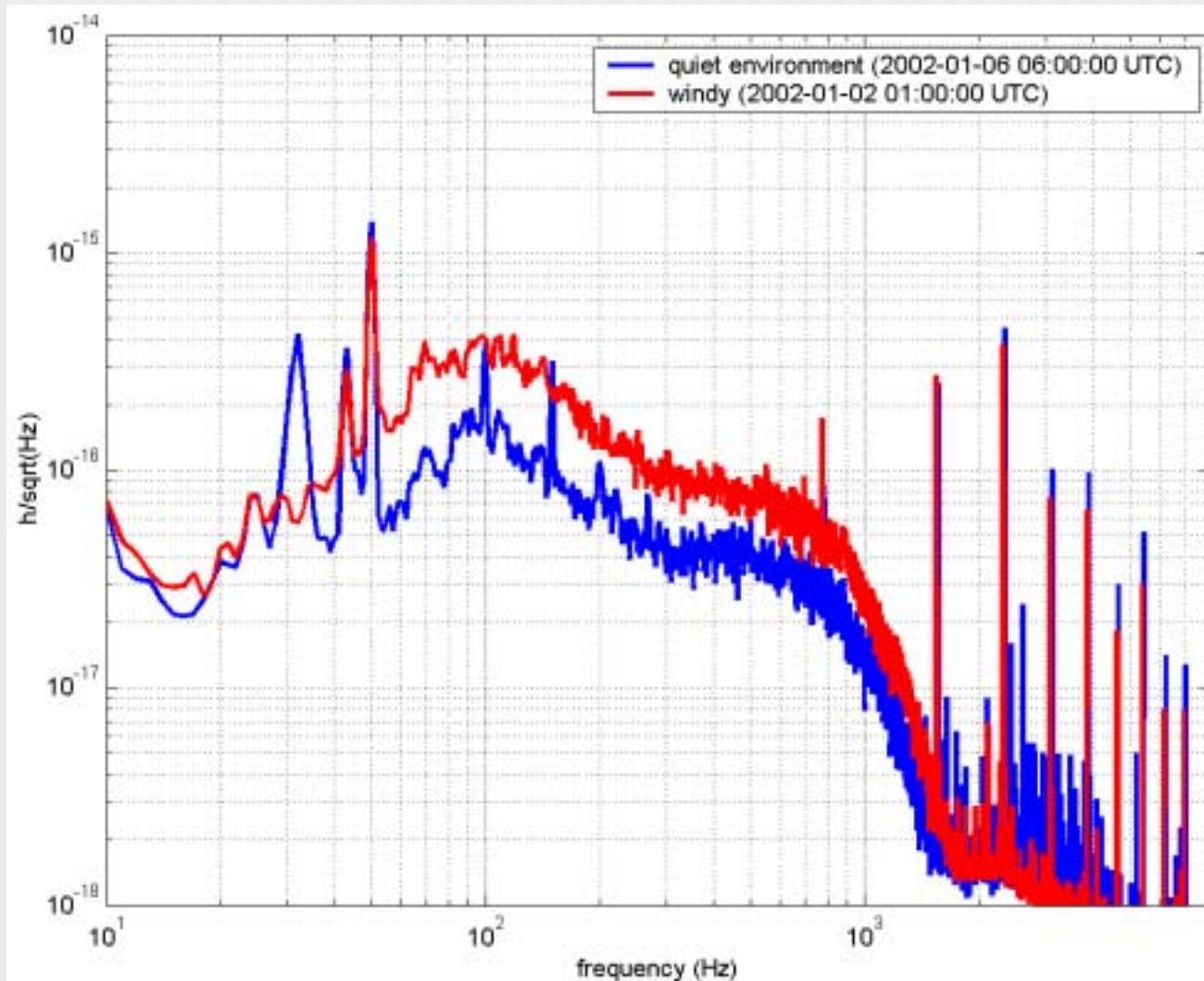


performance during coincidence run



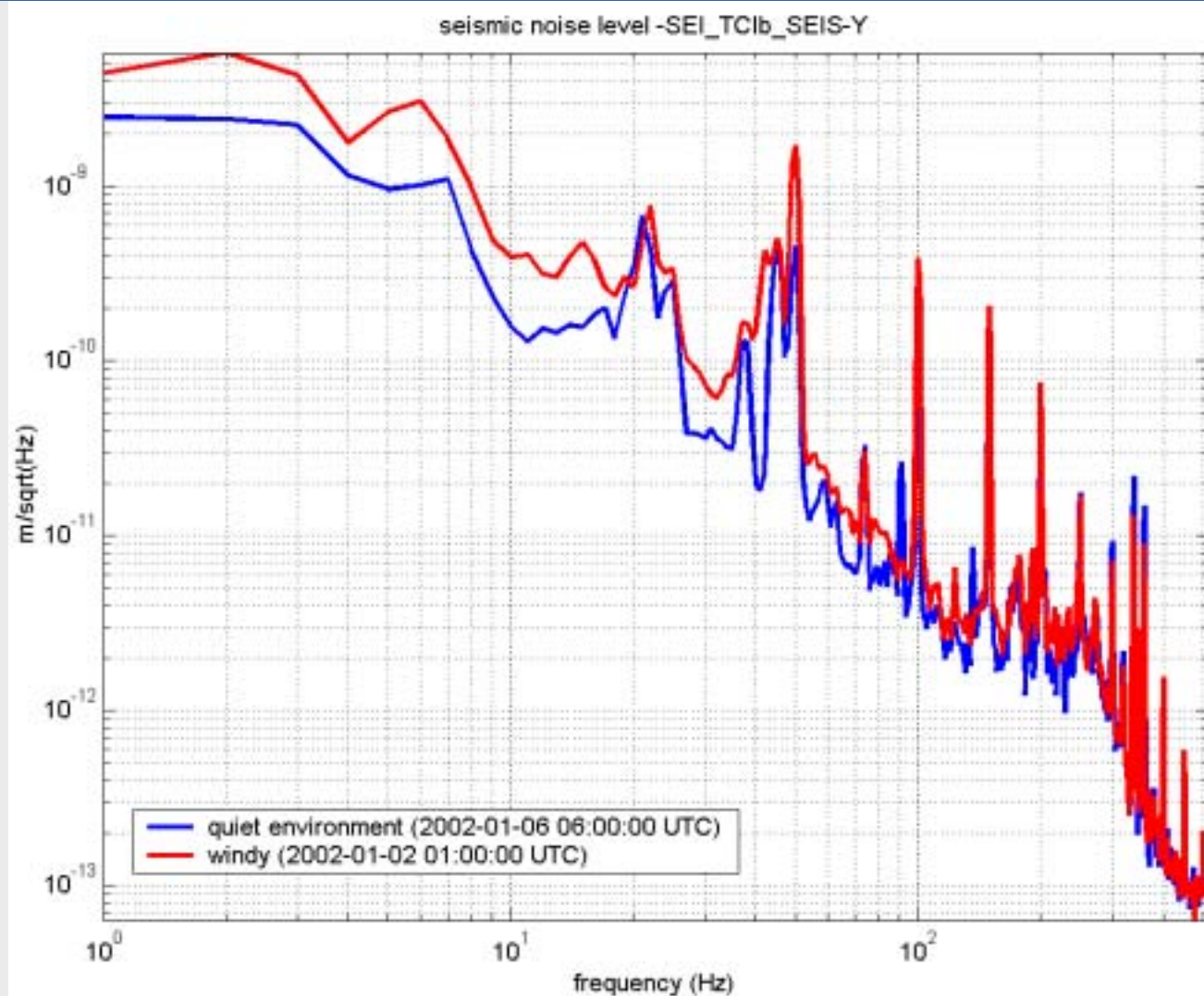


environmental disturbances



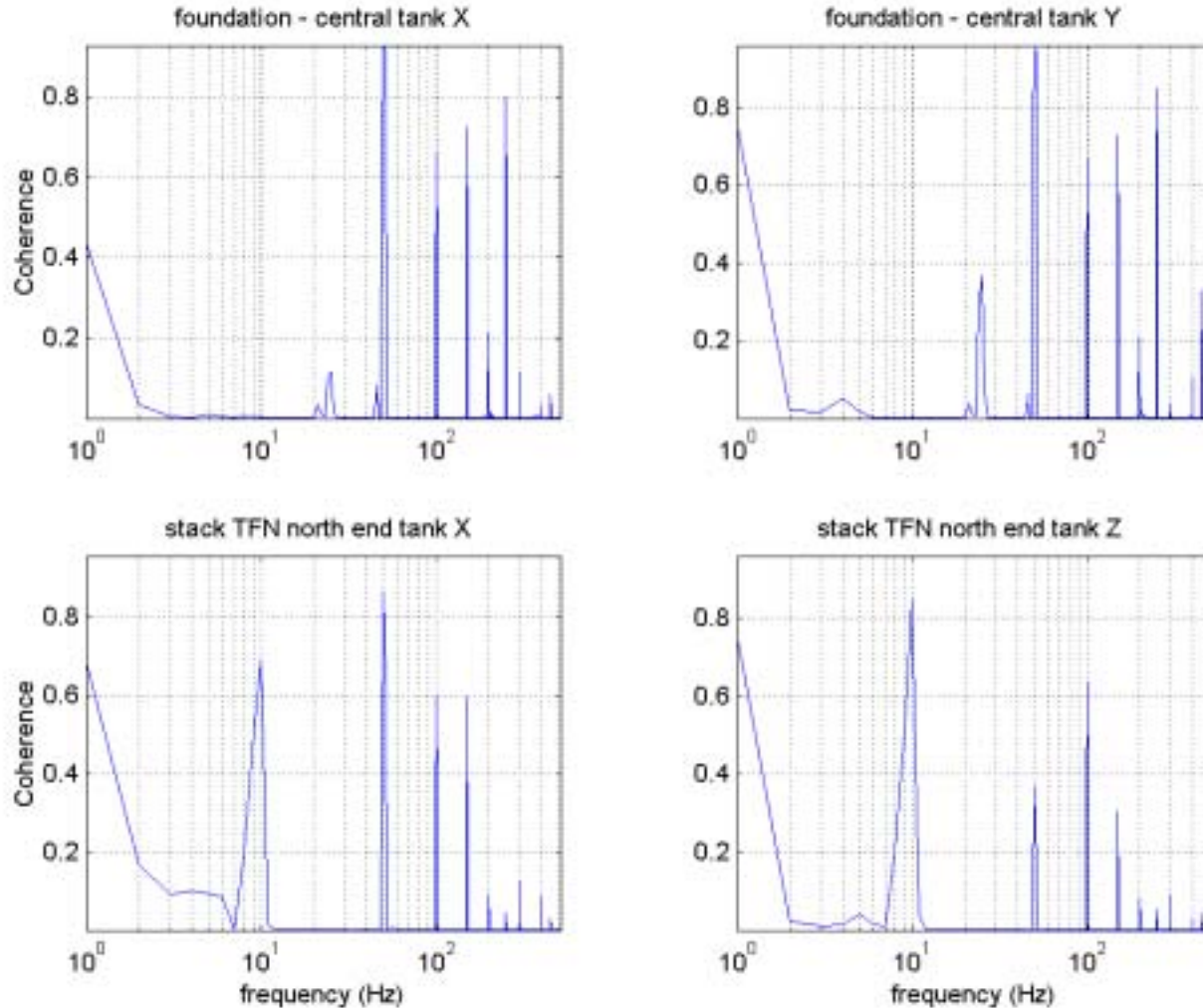


seismic noise



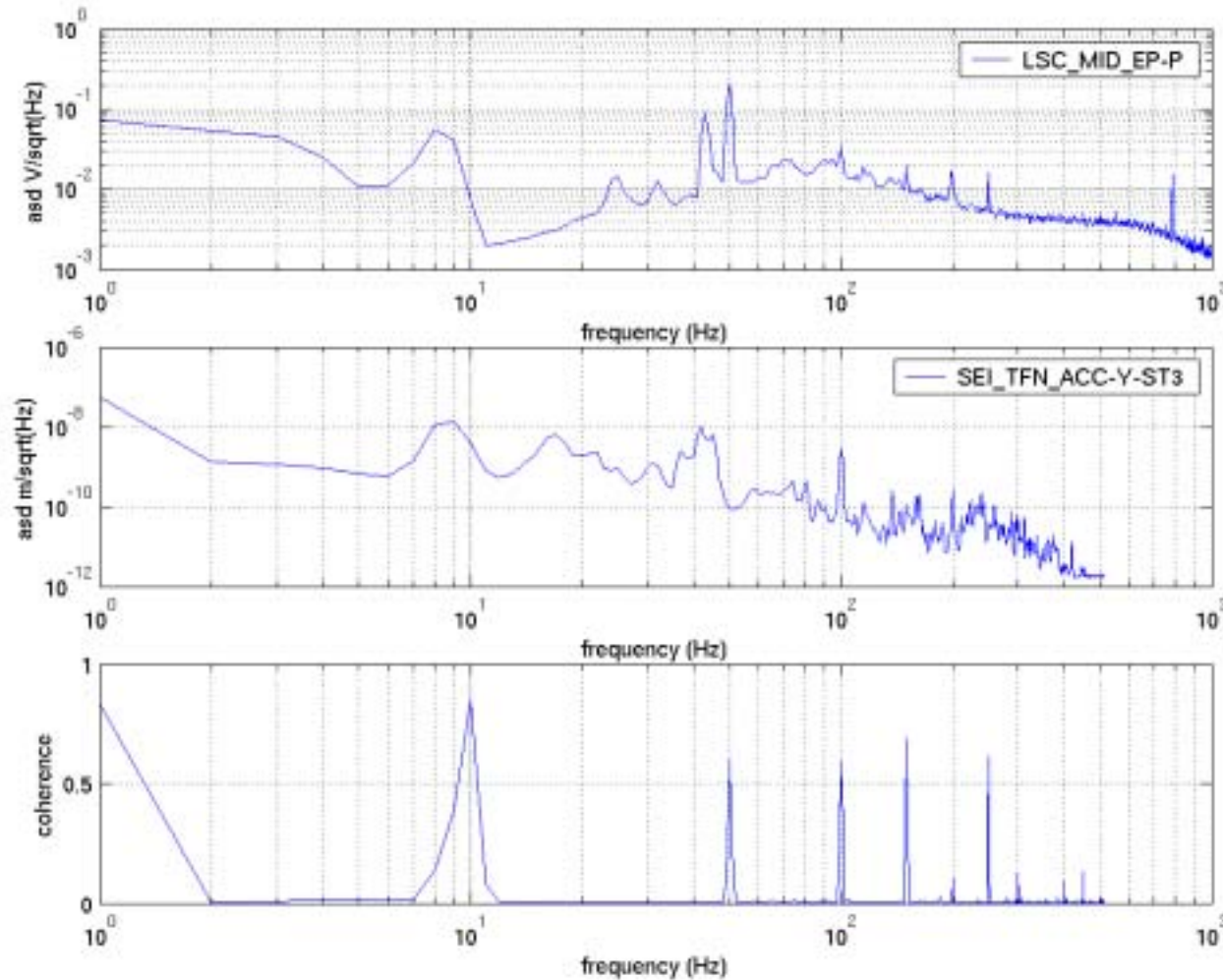


Coherence seismic – h

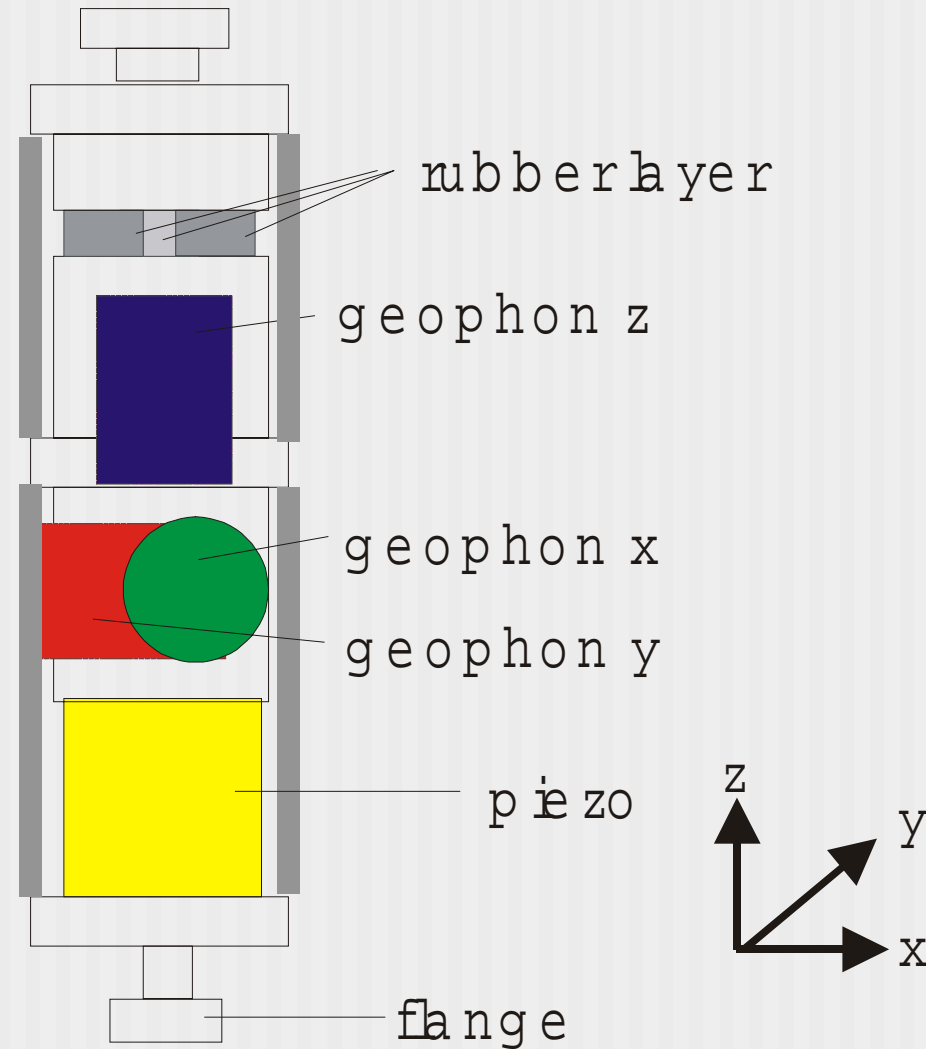
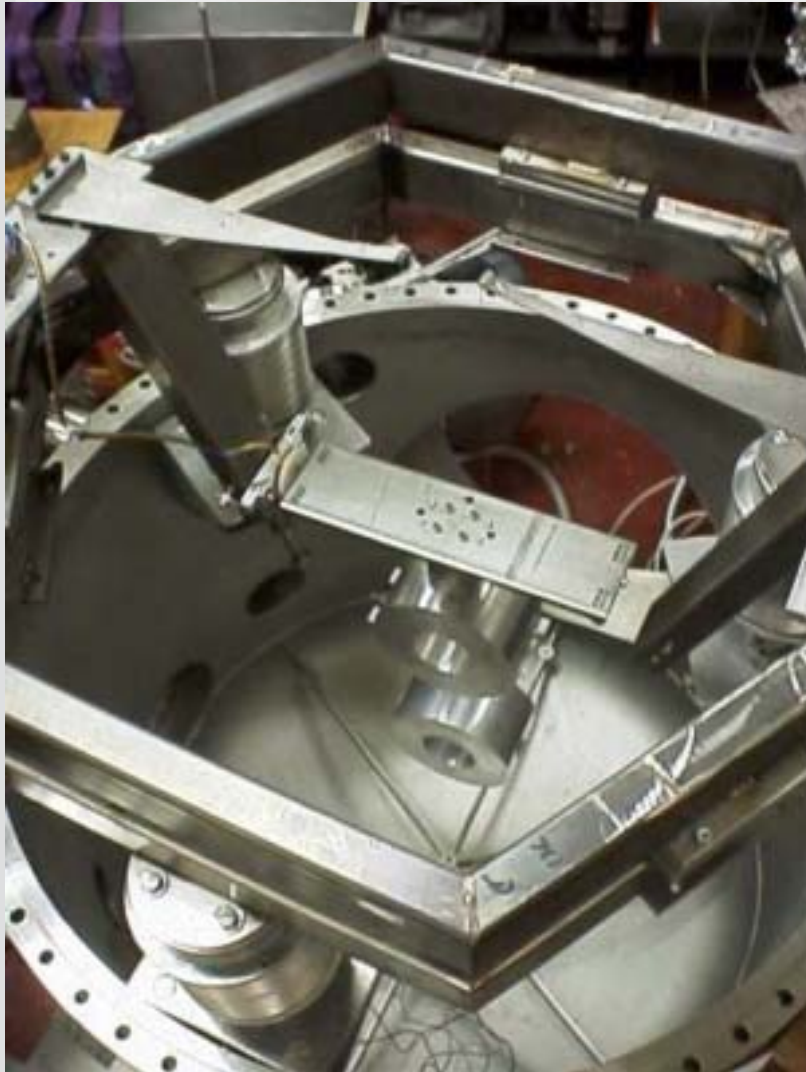




SEI_TFN_ACC-Y-ST3

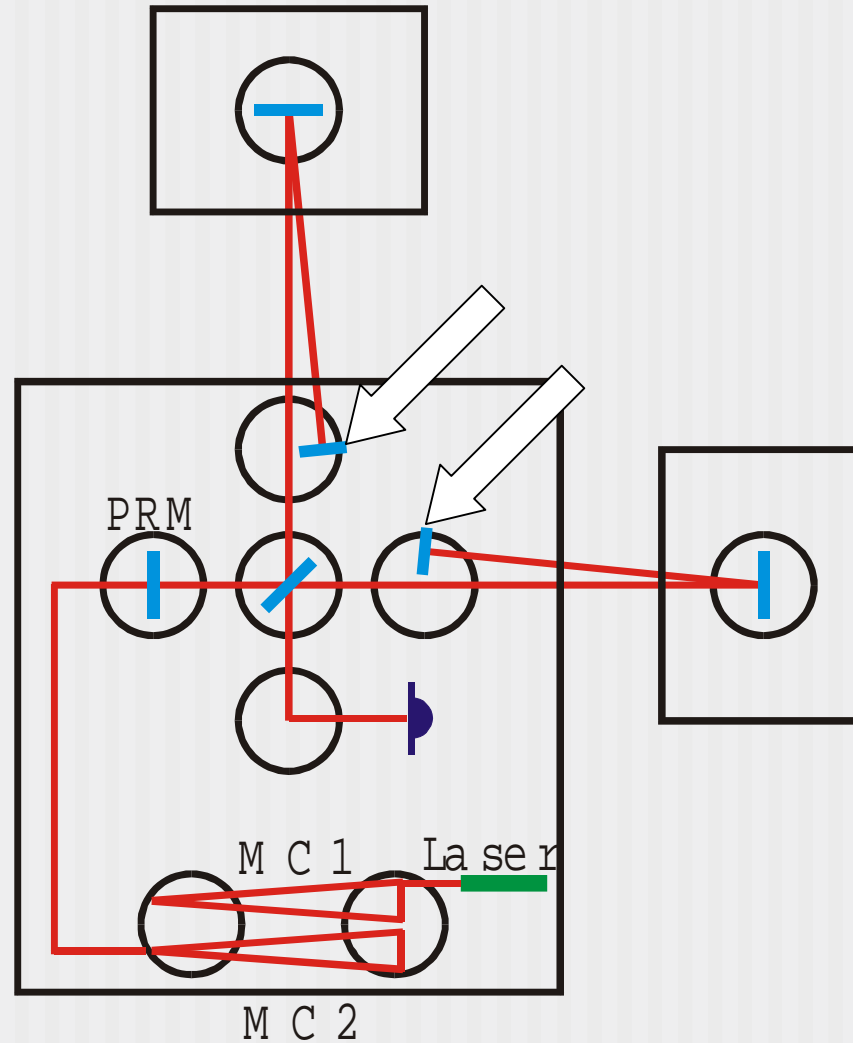


Stack



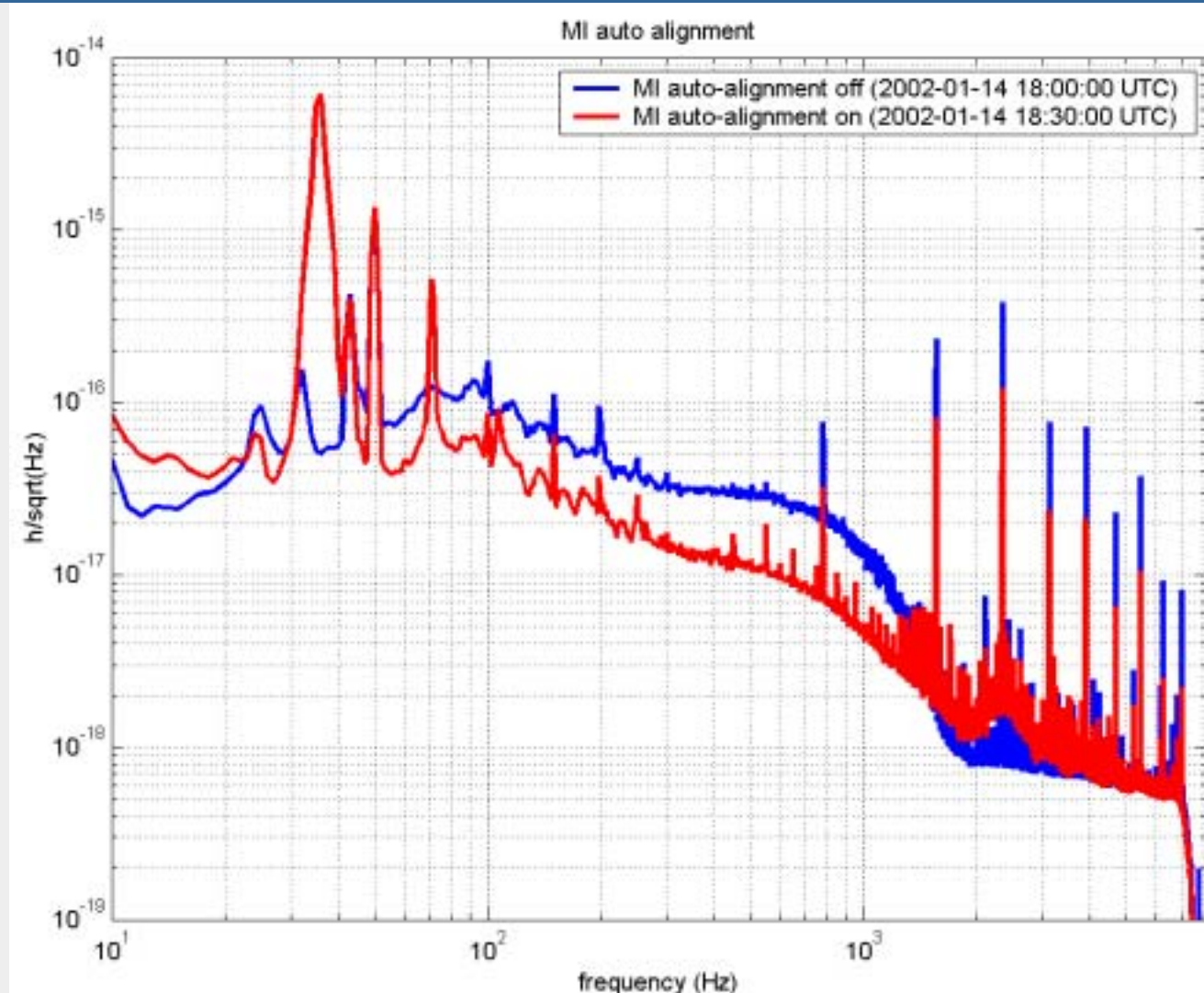


auto-alignment system





MI auto-alignment system





800Hz line noise in FB

