

# Using Condor for On-line Data Analysis within the LIGO Scientific Collaboration

Kipp Cannon, University of Wisconsin Milwaukee

March 15, 2005

## Condor-based LIGO Data Analysis

- Stand-alone processing tasks are submitted to compute clusters using Condor.
- Complex analysis pipelines are sequenced using DAGMan.
- Has traditionally been performed “off-line”.
- Latencies of several months.

## However

- Instrument operators require rapid feed-back on the quality of the data.
- Soon instruments will be running continuously.

## We Need “On-line” Data Analysis

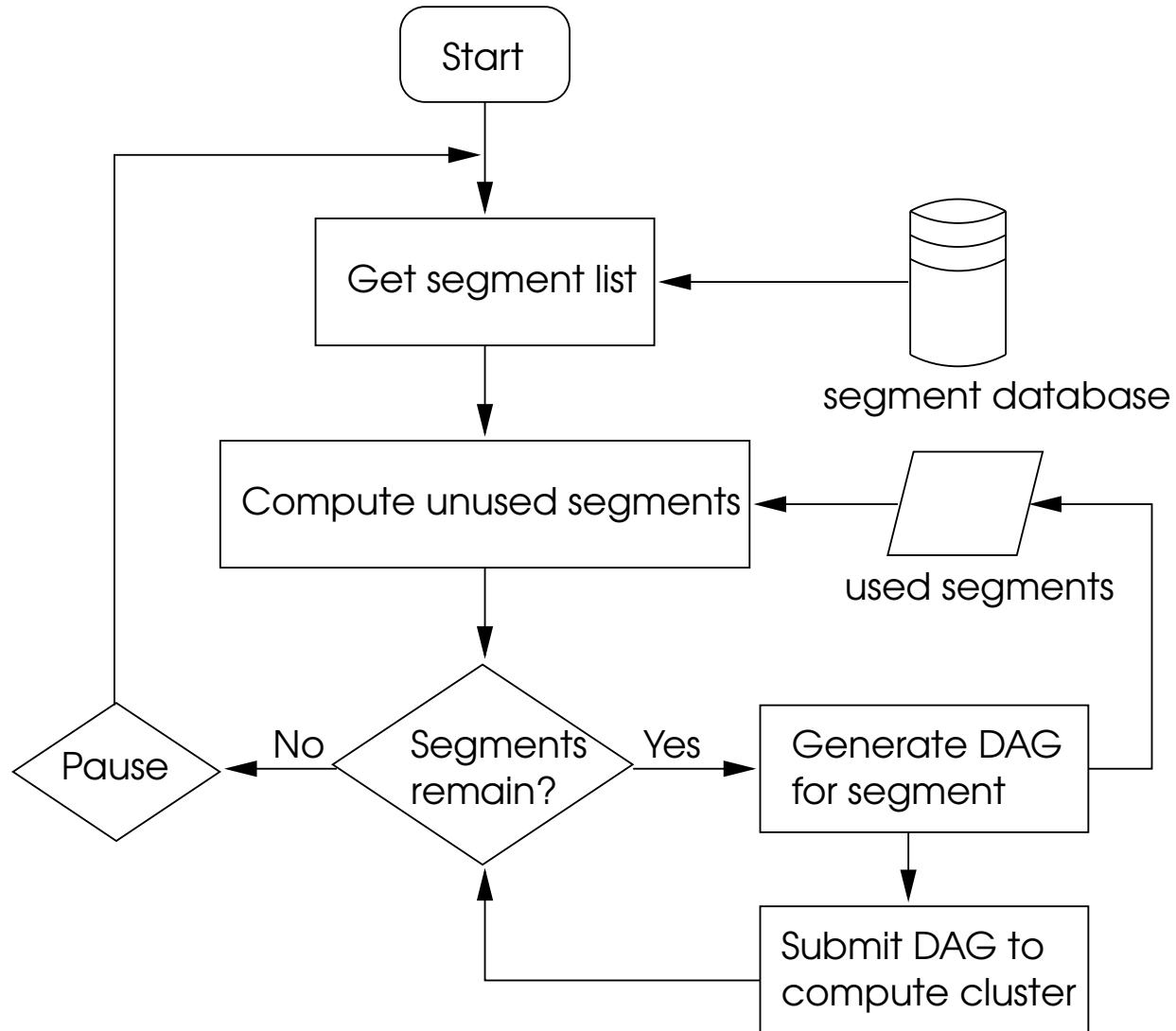
- Low(er) latency, and continuous, analysis.
- Sequencing the same complex work flows seen in off-line analyses.

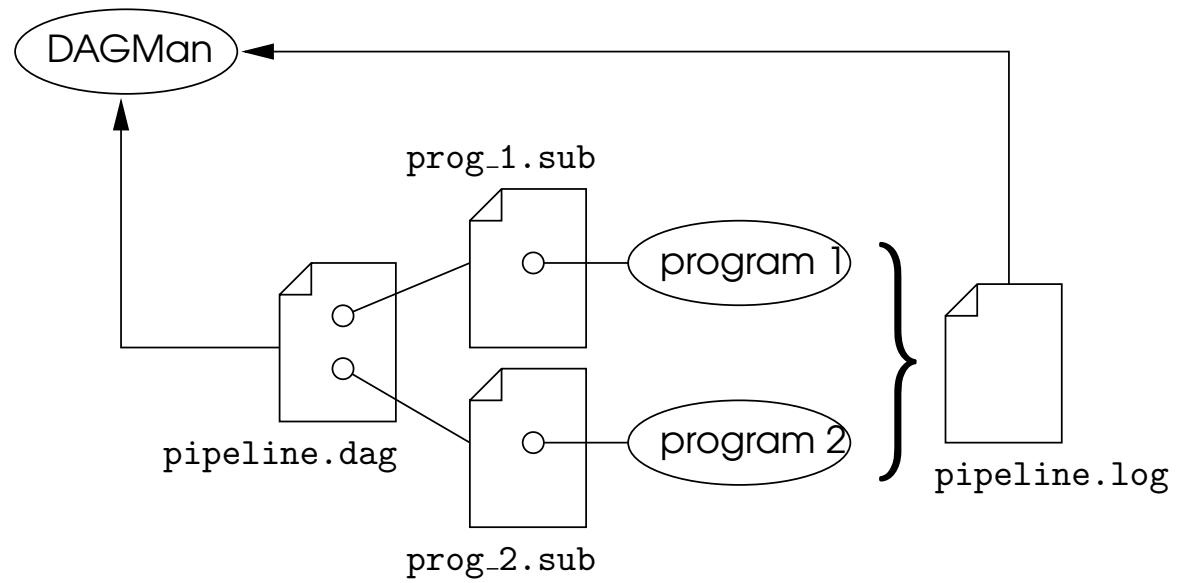
## On-Line Software Goals

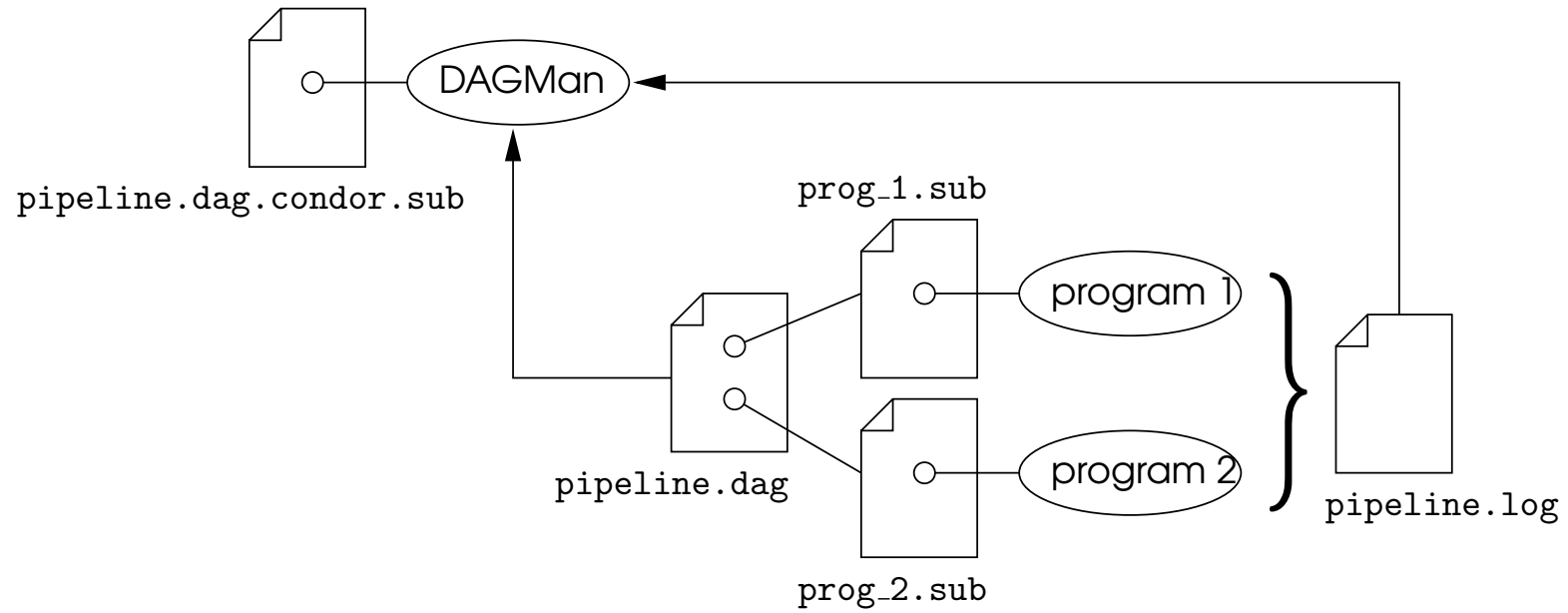
- Latencies of hours.
- Minimize the developer cost in converting an off-line analysis to an on-line analysis.
- Be robust against software and hardware failures.
- Provide status reports and error notification.

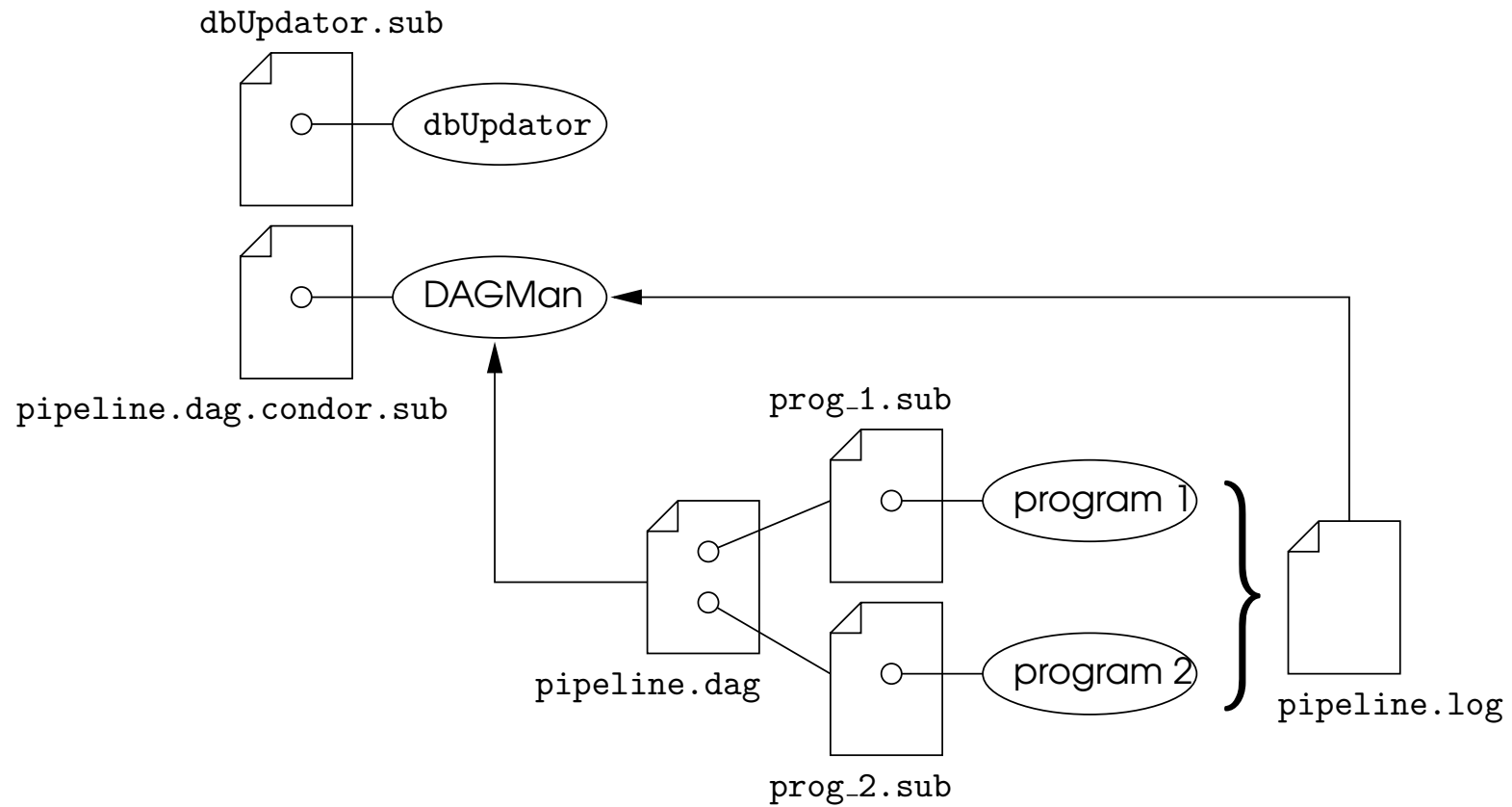
## How we do it

- Retain DAGMan as the work flow sequencer.
- User provides a script to generate a DAG that will analyze an interval of data given the start and end time of that data.
- A daemon watches for data, and calls the user's script as each new data segment becomes available.
- A job monitoring process runs alongside each DAG, periodically updating a MySQL database with the DAG's state.
- Scripts query the database, and provide a live view of the status of all analyses via a web interface.

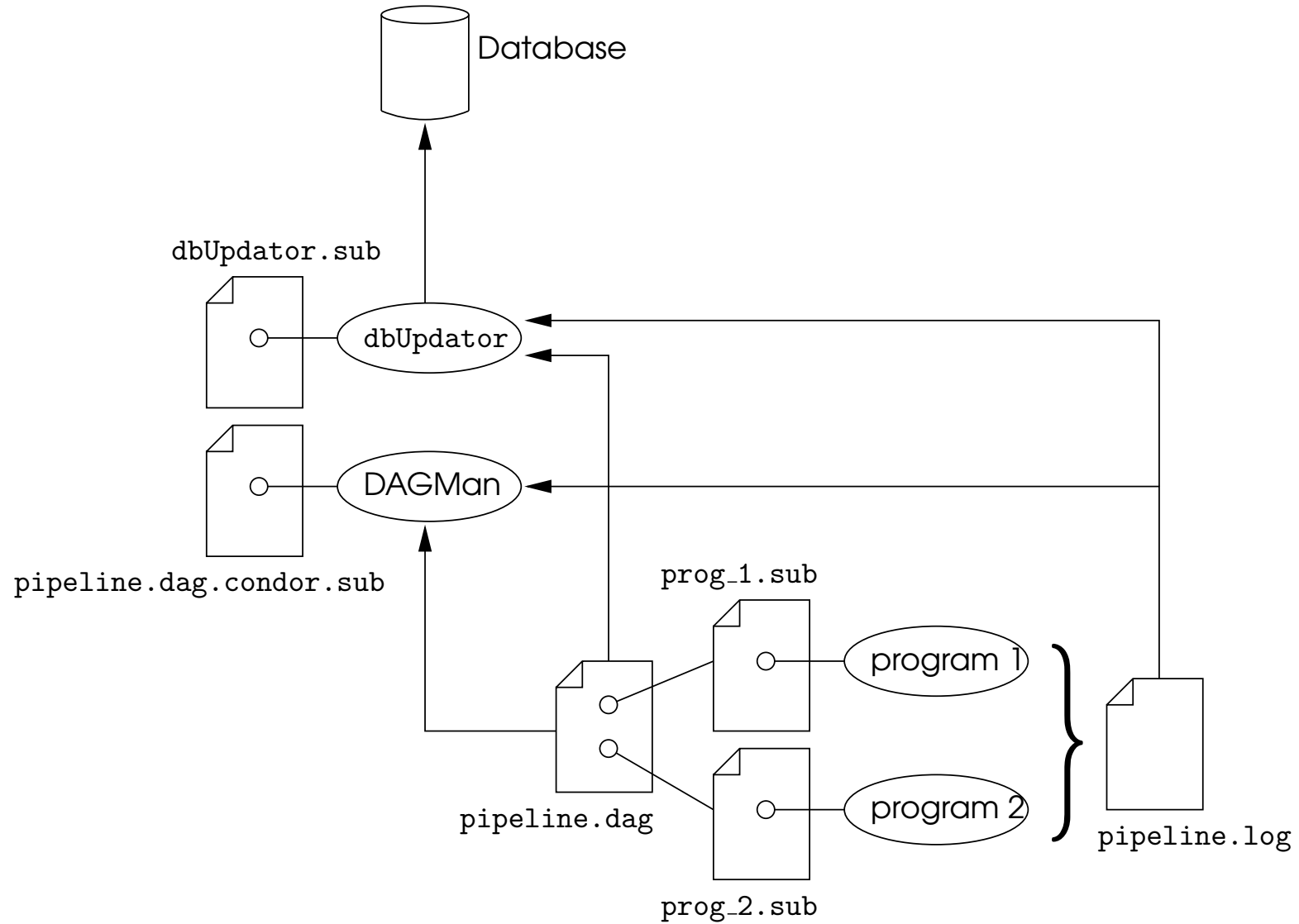


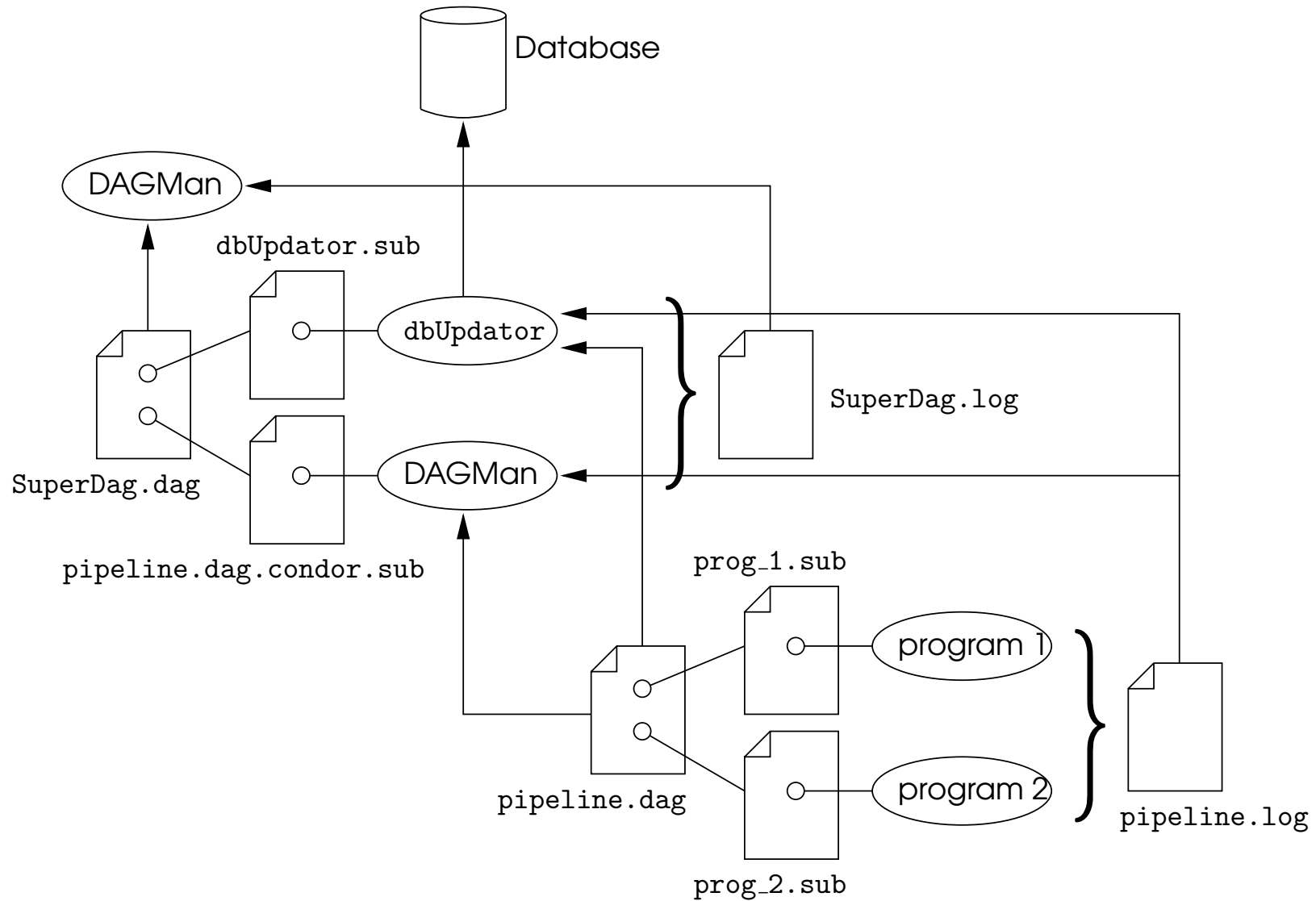










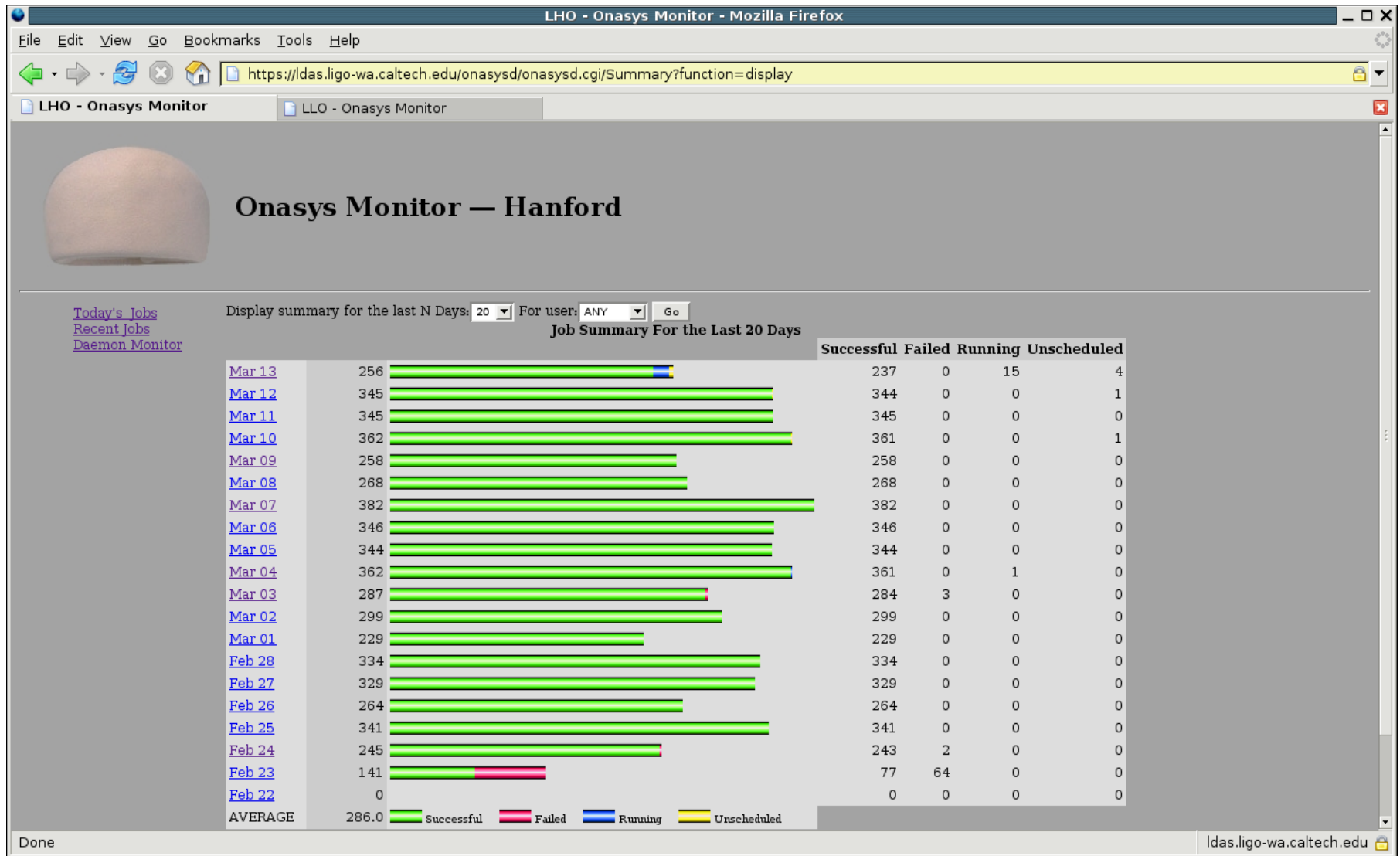


## Advantages

- No direct input from the on-line tools to the data analysis pipeline, only monitoring.
- Little interaction between on-line tools and data analysis pipelines means very few restrictions — user can run nearly any off-line DAG virtually as-is.
- Uses Condor and DAGMan to provide execution reliability for the various components.

## Potential Problems

- “A DAG every ten minutes” might bury us under log files — reliable machine-assisted job monitoring and diagnostics are a must.
- Long-term scalability. Existing setup will survive current science run without problems. The next, six month long, science run can almost certainly be accommodated as well. Will need to develop automated house-keeping tool(s) for continuous running.



LHO - Onasys Monitor - Mozilla Firefox

File Edit View Go Bookmarks Tools Help

https://ldas.ligo-wa.caltech.edu/onasysd/onasysd.cgi/Summary?function=displayDay&day=2005-03-13

LHO - Onasys Monitor LLO - Onasys Monitor

### Job Summary for: Sun Mar 13, 2005

Display:  Succeeded  Failed  Running  Unscheduled  Other

ID	SID	*	Host	User	Path	Submit Time	Start Time	Stop Time	Exec	Status
<a href="#">5733</a>	174506		ldas-grid	kipp	/dso-test/kipp/S4/H2/onasysd.jobs/7947/794799037_794799744	17:46:40	17:46:45	0	power_S4H2.794799037_794799744.dag	R
<a href="#">5732</a>	174498		ldas-grid	dbrown	/dso-test/dbrown/projects/iul/S4/H2/onasysd.jobs/7947/794797208_794799680	17:45:15	0	0	inspiral_S4H2.794797208_794799680.dag	&nbsp;
<a href="#">5731</a>	174490		ldas-grid	kipp	/dso-test/kipp/S4/H1/onasysd.jobs/7947/794798813_794799520	17:40:23	17:40:23	0	power_S4H1.794798813_794799520.dag	R
<a href="#">5730</a>	174484		ldas-grid	kipp	/dso-test/kipp/S4/H2/onasysd.jobs/7947/794798237_794799040	17:32:54	17:32:54	0	power_S4H2.794798237_794799040.dag	R
<a href="#">5729</a>	174479		ldas-grid	kipp	/dso-test/kipp/S4/H1/onasysd.jobs/7947/794798141_794798816	17:29:24	17:29:24	0	power_S4H1.794798141_794798816.dag	R
<a href="#">5728</a>	174419		ldas-grid	lindy	/dso-test/lindy/s4/h1/onasysd.jobs/7947/794794551_794798368	17:22:18	17:22:18	17:31:35	kw_s4.794794551_794798368.dag	T
<a href="#">5727</a>	174407		ldas-grid	kipp	/dso-test/kipp/S4/H2/onasysd.jobs/7947/794797437_794798240	17:21:42	17:21:42	0	power_S4H2.794797437_794798240.dag	R
<a href="#">5726</a>	174402		ldas-grid	dbrown	/dso-test/dbrown/projects/iul/S4/H1/onasysd.jobs/7947/794796120_794798240	17:20:29	17:20:29	17:42:35	inspiral_S4H1.794796120_794798240.dag	T
<a href="#">5725</a>	174397		ldas-grid	kipp	/dso-test/kipp/S4/H1/onasysd.jobs/7947/794797373_794798144	17:17:33	17:17:33	0	power_S4H1.794797373_794798144.dag	R
<a href="#">5724</a>	174372		ldas-grid	lindy	/dso-test/lindy/s4/h2/onasysd.jobs/7947/794793887_794797792	17:14:01	17:14:01	17:23:47	kw_s4.794793887_794797792.dag	T
<a href="#">5723</a>	174314		ldas-grid	kipp	/dso-test/kipp/S4/H2/onasysd.jobs/7947/794796701_794797440	17:07:44	17:07:44	0	power_S4H2.794796701_794797440.dag	R
<a href="#">5722</a>	174281		ldas-grid	kipp	/dso-test/kipp/S4/H1/onasysd.jobs/7947/794796701_794797376	17:06:24	17:06:24	0	power_S4H1.794796701_794797376.dag	R
<a href="#">5721</a>	174270		ldas-grid	dbrown	/dso-test/dbrown/projects/iul/S4/H2/onasysd.jobs/7947/794794904_794797344	17:04:39	17:04:39	17:28:44	inspiral_S4H2.794794904_794797344.dag	T
<a href="#">5720</a>	174261		ldas-grid	kipp	/dso-test/kipp/S4/H2/onasysd.jobs/7947/794795901_794796704	16:54:35	16:54:35	0	power_S4H2.794795901_794796704.dag	R
<a href="#">5719</a>	174257		ldas-grid	kipp	/dso-test/kipp/S4/H1/onasysd.jobs/7947/794796029_794796704	16:54:32	16:54:32	0	power_S4H1.794796029_794796704.dag	R
<a href="#">5718</a>	174166		ldas-grid	dbrown	/dso-test/dbrown/projects/iul/S4/H1/onasysd.jobs/7947/794793944_794796256	16:46:00	16:46:00	17:06:22	inspiral_S4H1.794793944_794796256.dag	T
<a href="#">5717</a>	174159		ldas-grid	kipp	/dso-test/kipp/S4/H1/onasysd.jobs/7947/794795389_794796032	16:42:31	16:42:31	0	power_S4H1.794795389_794796032.dag	R
<a href="#">5716</a>	174154		ldas-grid	kipp	/dso-test/kipp/S4/H2/onasysd.jobs/7947/794795101_794795904	16:41:56	16:41:56	0	power_S4H2.794795101_794795904.dag	R
<a href="#">5715</a>	174123		ldas-grid	kipp	/dso-test/kipp/S4/H1/onasysd.jobs/7947/794794589_794795392	16:31:15	16:31:15	0	power_S4H1.794794589_794795392.dag	R
<a href="#">5714</a>	174069		ldas-grid	kipp	/dso-test/kipp/S4/H2/onasysd.jobs/7947/794794397_794795104	16:29:08	16:29:08	0	power_S4H2.794794397_794795104.dag	R
<a href="#">5713</a>	174051		ldas-grid	dbrown	/dso-test/dbrown/projects/iul/S4/H2/onasysd.jobs/7947/794792600_794795040	16:27:12	16:27:12	16:48:26	inspiral_S4H2.794792600_794795040.dag	T
<a href="#">5712</a>	174044		ldas-grid	kipp	/dso-test/kipp/S4/H1/onasysd.jobs/7947/794793917_794794592	16:20:23	16:20:23	0	power_S4H1.794793917_794794592.dag	R
<a href="#">5711</a>	174021		ldas-grid	lindy	/dso-test/lindy/s4/h1/onasysd.jobs/7947/794790807_794794560	16:19:54	16:19:54	16:28:55	kw_s4.794790807_794794560.dag	T
<a href="#">5710</a>	173996		ldas-grid	kipp	/dso-test/kipp/S4/H2/onasysd.jobs/7947/794793661_794794400	16:15:51	16:15:51	17:33:38	power_S4H2.794793661_794794400.dag	T

Done

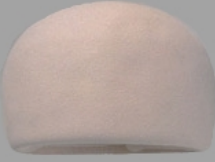
ldas.ligo-wa.caltech.edu

LHO - Onasys Monitor - Mozilla Firefox

File Edit View Go Bookmarks Tools Help

https://ldas.ligo-wa.caltech.edu/onasysd/onasysd.cgi/Summary?function=displayDAG&jobid=5733

LHO - Onasys Monitor LLO - Onasys Monitor



## Onasys Monitor — Hanford

[Today's Jobs](#)  
[Recent Jobs](#)  
[Daemon Monitor](#)

### Summary of DAG for Job #5733

Name	*	Submit Time	Start Time	Stop Time	Status	Return Code
<a href="#">lalapps_power</a>		2005-03-13 17:46:59.00	2005-03-13 17:47:17.00		R	
<a href="#">LSCdataFind</a>		2005-03-13 17:46:47.00	2005-03-13 17:46:47.00	2005-03-13 17:46:48.00	T	0
<a href="#">publish</a>					U	

```

graph TD
    LSCdataFind --> lalapps_power
    lalapps_power --> publish
  
```

No ImageMap. Sorry. Graphviz version is too old. Or something.


Done ldas.ligo-wa.caltech.edu

LHO - Onasys Monitor - Mozilla Firefox

File Edit View Go Bookmarks Tools Help

https://ldas.ligo-wa.caltech.edu/onasysd/onasysd.cgi/Summary?function=displayNode&node=lalapps\_power&jobid=5733

LHO - Onasys Monitor LLO - Onasys Monitor



## Onasys Monitor — Hanford

[Today's Jobs](#)  
[Recent Jobs](#)  
[Daemon Monitor](#)

### Node lalapps\_power / Job # 5733

Job ID: [5733](#)  
Name: lalapps\_power  
Submit Time: 2005-03-13 17:46:59.00  
Start Time: 2005-03-13 17:47:17.00  
Stop Time: None  
Return Code: None  
Submit File: power\_pipe.power.S4.sub  
Std Output File: logs/power.out  
Std Error File: logs/power.err

Parent Nodes  
[LSCdataFind](#)

Child Nodes  
[publish](#)

[Pillbox Hat, 1961](#)  
Benjamin Goodman (est. 1901)  
Benjamin  
Worn by Jacqueline Kennedy to the Inauguration Ceremony, Washington, D.C., January 20, 1961  
John F. Kennedy Library and Museum  
Copyright © 2000-2005 [The Metropolitan Museum of Art](#). All rights reserved.

Done ldas.ligo-wa.caltech.edu

LHO - Onasys Monitor - Mozilla Firefox

File Edit View Go Bookmarks Tools Help

https://ldas.ligo-wa.caltech.edu/onasysd/onasysd.cgi/Summary?function=displayDAG&jobid=5630

LHO - Onasys Monitor LLO - Onasys Monitor

<a href="#">d804563b183bd8399d3e4981e82776a6</a>	2005-03-13 10:03:51.00	2005-03-13 10:04:07.00		R	
<a href="#">8e7d9b88fb5f077c369ff3a080e951c9</a>				U	
<a href="#">511b443837c3692f6d43369850e3c65b</a>				U	
<a href="#">a55d89a6935707d83efd7e44c9c67463</a>	2005-03-13 10:02:12.00	2005-03-13 10:02:18.00	2005-03-13 10:02:52.00	T	0
<a href="#">ea177f8c36f3682107a39582d078599e</a>	2005-03-13 10:04:18.00	2005-03-13 10:05:04.00		R	
<a href="#">f39cddb1539101b9c03ca0ca3f953c88</a>				U	
<a href="#">acd6a0f5366791a399f283b78ac14ac9</a>	2005-03-13 10:04:25.00	2005-03-13 10:05:13.00		R	
<a href="#">66e7bf22766bca717b4923fe62ec7411</a>	2005-03-13 10:04:36.00	2005-03-13 10:05:06.00		R	
<a href="#">231e0d34af7181791da43605e345a422</a>				U	
<a href="#">d5b0777e719e1de547a042a1286a8454</a>	2005-03-13 10:04:52.00			I	
<a href="#">bc557a3fc5f1dc614051fc5c33371213</a>	2005-03-13 10:05:08.00			I	
<a href="#">f3d36d6e7c9106b38bf2221e60734040</a>				U	
<a href="#">759d6d9cbd8a7ea1e178feb22ff67e38</a>				U	
<a href="#">305653a4e68ce345c1a3985adac08c6b</a>	2005-03-13 10:03:31.00	2005-03-13 10:03:42.00		R	
<a href="#">f209d481121e3e2d68135563783f39ea</a>	2005-03-13 10:03:28.00	2005-03-13 10:03:54.00		R	
<a href="#">58589099ec807eea18617449ad95e99a</a>	2005-03-13 10:05:02.00			I	
<a href="#">bc8cf682e9c9752c4cc7a22336308d48</a>	2005-03-13 10:05:17.00			I	
<a href="#">1e206cf0799bf822ef94f11aa0887164</a>	2005-03-13 10:03:49.00	2005-03-13 10:04:11.00		R	
<a href="#">11cdebd54f20ac36148e468db71ebcd7</a>				U	
<a href="#">cf1f12c9459c3f51be08813887f73f38</a>				U	
<a href="#">59c847cba204cfe0989424bafbd4e441</a>				U	
<a href="#">f3b91a34e9f91bd5e28803361a657f2e</a>				U	
<a href="#">fd0df4e89522969238bc3c43e442a0fa</a>	2005-03-13 10:04:01.00	2005-03-13 10:04:30.00		R	
<a href="#">7fc1668859fbd9e91b27ba85ab77f009</a>				U	
<a href="#">61b02e68b651ddb1ad6ab53983ad0666</a>				U	

Done ldas.ligo-wa.caltech.edu

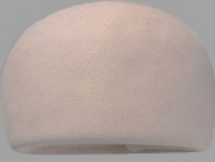


LHO - Onasys Monitor - Mozilla Firefox

File Edit View Go Bookmarks Tools Help

https://ldas.ligo-wa.caltech.edu/onasysd/onasysd.cgi/Summary?function=displayNode&node=dc05f02318bdcff83a789809a184eb26&jobid=5630

LHO - Onasys Monitor LLO - Onasys Monitor



## Onasys Monitor — Hanford

[Today's Jobs](#)  
[Recent Jobs](#)  
[Daemon Monitor](#)

### Node dc05f02318bdcff83a789809a184eb26 / Job # 5630

**Job ID:** [5630](#)  
**Name:** dc05f02318bdcff83a789809a184eb26  
**Submit Time:** None  
**Start Time:** None  
**Stop Time:** None  
**Return Code:** None  
**Submit File:** online.sinca.sub  
**Std Output File:** logs/inca-\$(macrogpsstarttime)-\$(macrogpsendtime)-\$(cluster)-\$(process).out  
**Std Error File:** logs/inca-\$(macrogpsstarttime)-\$(macrogpsendtime)-\$(cluster)-\$(process).err

**Parent Nodes**

[8aed1c2e31d74594322e33204bc695e3](#) [db1ed02a3a82b45aaa6b6e2123dabe77](#) [f854662819a6cddd5e45b9bc8208f469](#) [61b02e68b651ddb1ad6ab53983ad0666](#)  
[6bddae5302bf6717b9788ba8c9bac64e](#) [8cde48cec0ccdd6e5a24f31d049fa292](#) [003e3077bf115b92b01a2df99bebd4e6](#) [9d921ab83816b901d2b06cdee804e148](#)  
[4ebdb46fb7a57e137ec8e77f534c4311](#) [9ac97219db7660f9685ef5ade81fcd3b](#) [3177083572b4627f560c805e0ec5686e](#) [a8e9f947275a64131f1e5eb829cc55bd](#)  
[83096342a938b72dc8efe08e7f80f858](#) [be95c911dd5168b0b828e04d6b724364](#) [8e7d9b88fb5f077c369ff3a080e951c9](#) [f39cddb1539101b9c03ca0ca3f953c88](#)  
[8fcd1aa6f64a15f13c81bac62f0670f5](#) [f3b91a34e9f91bd5e28803361a657f2e](#) [231e0d34af7181791da43605e345a422](#) [511b443837c3692f6d43369850e3c65b](#)  
[f3d36d6e7c9106b38bf2221e60734040](#) [fc8476720986bfdeb42e9e95007a2fab](#) [1b2628eea2ba4fc31ddcc086da9518e6](#) [5656e4edf7c5ea2c9a6011eaa111bbb4](#)  
[7fc1668859fbd9e91b27ba85ab77f009](#) [a84239ecbb944e2001ffca0ac94e391e](#) [e204e04411b424e00f22b6b7ca39e580](#) [645fcda44aacac8be8867c189cd84644](#)  
[cflf12c9459c3f51be08813887f73f38](#) [ccf875173eb4d0bc0b92ae032957cd47](#) [759d6d9cbd8a7ea1e178feb22ff67e38](#) [f50e413e1f9de4ef51bdac4afca1d27c](#)  
[df29a8a6f4b393c9f0526bca51fc9233](#) [fc2e245eb96b17a7e001a3d96227cdd5](#) [d2d7fad575424409590840de7ece6414](#) [c7f1084ab9c365bd626df5c586d16027](#)  
[00df2ce6d3f27ae034aa80416fdb2140](#) [fa8a9edf018f71c7f30c6e4940719765](#) [915c171336b6367e38855e39f0ffbe66](#) [66091dbe67ff84459c0598ea7f642e28](#)

**Child Nodes**

[5051b1e1eb6577c8f960e71be68dbff1](#)

Pillbox Hat, 1901  
 Bergdorf Goodman (est. 1901)  
 Photo: © iStock

Done ldas.ligo-wa.caltech.edu

## Summary

- As far as we can tell, any DAG at all can be run using these tools, and monitored via the web interface.
- For three weeks, the system has delivered latencies of 10s of minutes for all three searches being run using it.
- System has proven itself to be fault tolerant, surviving a power failure at one observatory with minimal user intervention.
- The machine-assisted monitoring and fault analysis has proven itself to be highly effective at quickly identifying failures, and directing the user to the specific problem that has occurred.

## Acknowledgements

- Stuart Anderson, Duncan Brown, Ben Johnson, Scott Koranda, Greg Mendell, Brian Moe