

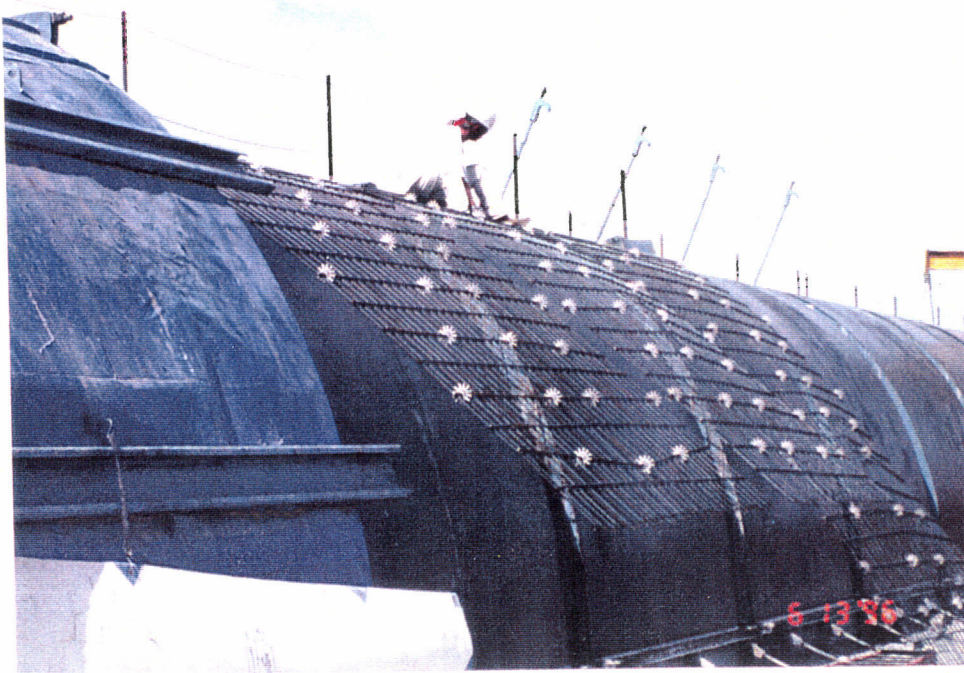
G960144-12-O-P

Stripped forms sides from the typed "C" beam tube enclosure quad forms.



G960144-13-O-P

Type "C" beam tube enclosure handling after curing at the Acme Precast yard.



G960144-09-O-P

Installed rebar mat for the type "C" forms.



G960144-05-O-P

Another view of a typical conduit trench.



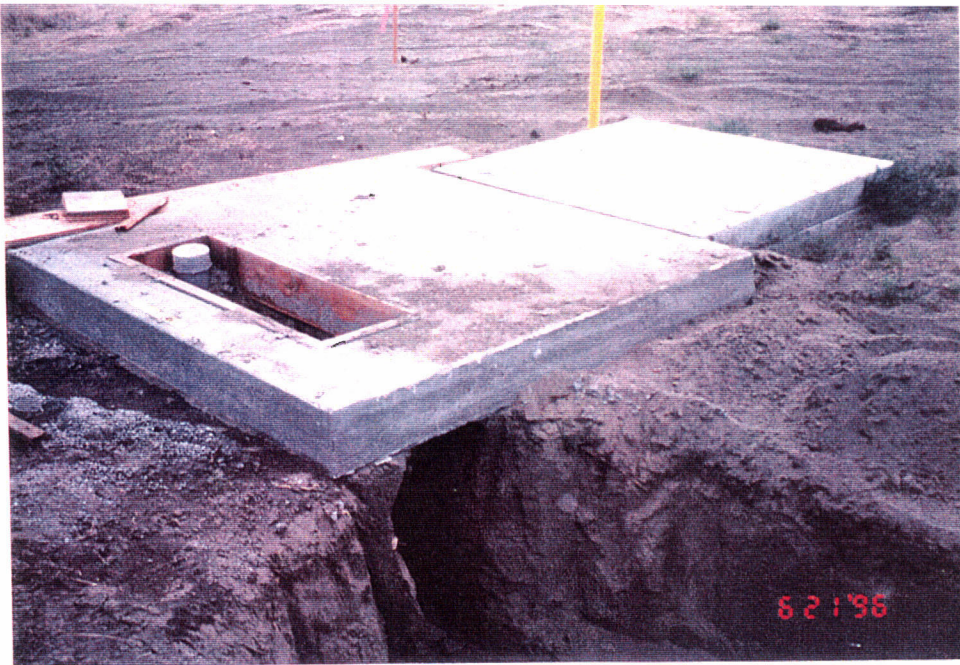
G960144-21-O-P

Forming most of the duct banks was necessary because of poor soil conditions.



G960144-24-O-P

Placing duct bank concrete



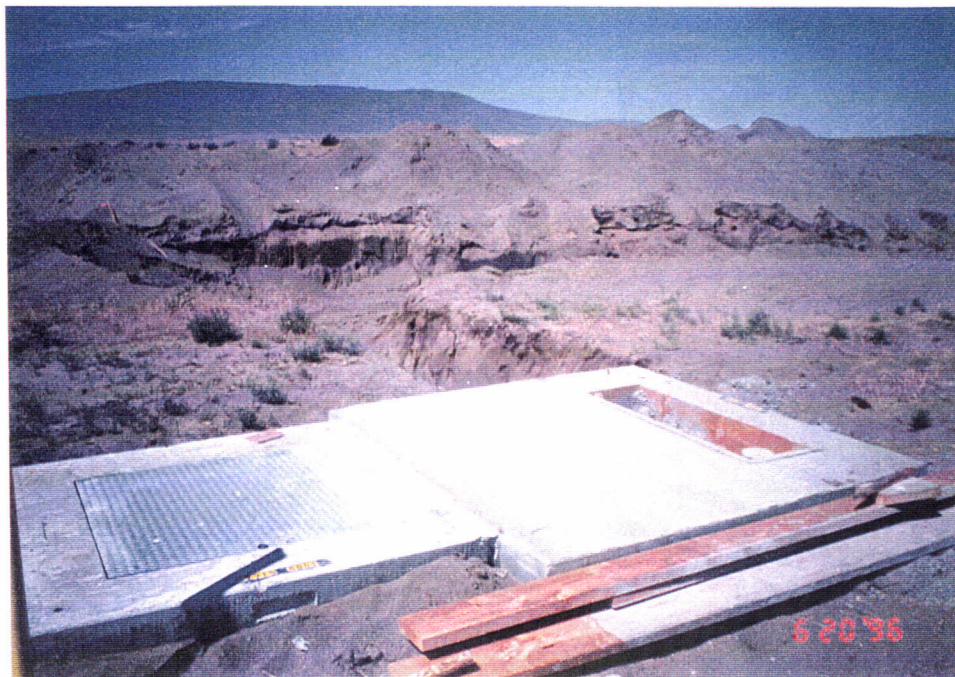
G960144-25-O-P

PUD installed bake out box, and acme installed typical transformer pad at the southwest arm Mid Station.



G960144-26-O-P

Delivered electrical cable pull box and conduits.



G960144-17-O-P

Another view of the transformer pad and the bake-out box.



G960143-12-O-PV

Fine grading activities preparing the beam tube access road for bituminous treatment.



G960144-11-O-PV

View of the completed beam tube access road base installation prior to bituminous treatment.



G960144-11A-O-P

Another view of the completed access road prior to bituminous treatment.



G960144-16-O-P

Conduit trench from
the southwest arm



G960144-03-O-PV

Conduit trench, view
from the Pull box
location to the
southwest arm Mid
Station



G960144-22-O-P

Close-up view of the
conduit, support and
the ground wire prior
to placing the
concrete.



G960144-01 -O- PV



G960144-02-O- PV



G960144-03 -O- PV

Dam
as cap

G960144-04 -O-P



DAME

G960144-05 -O-P



G960144-06 -O-P



G960144-07 -O-P



G960144-08 -O-P



Same

G960144-09 -O-P



G960144- 10 -O-P

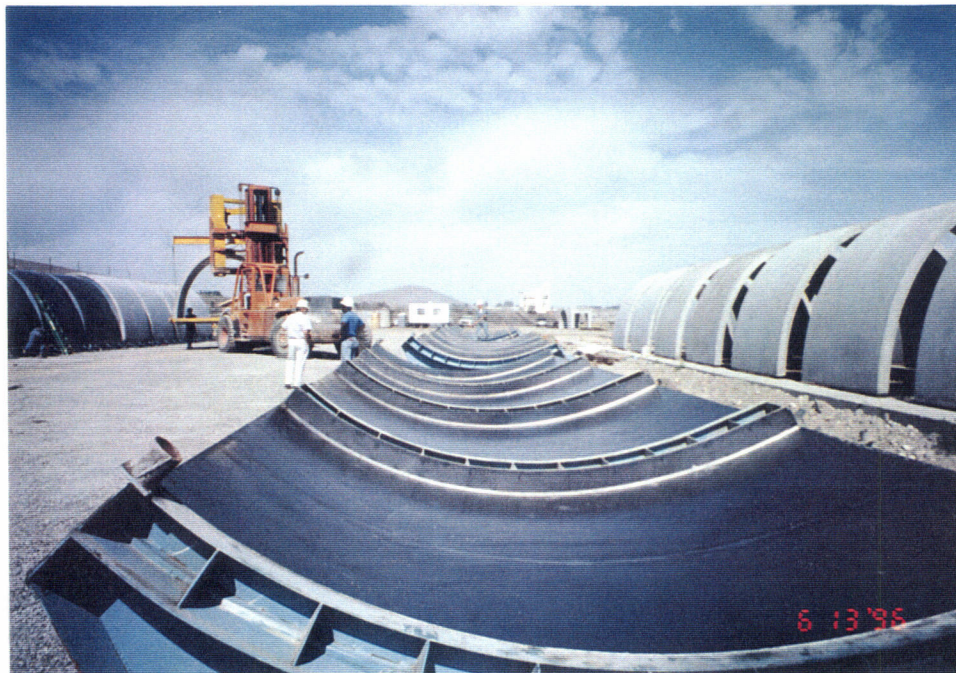


G960144- 11 -O-P



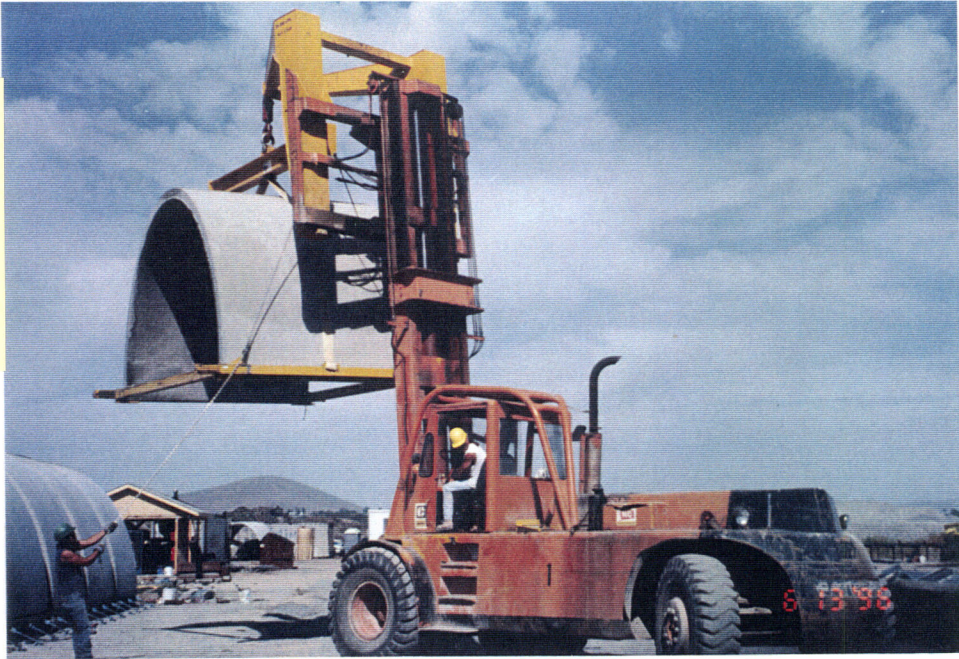
Dame

G960144- 12 -O-P



pame

G960144- 13 -O-P



*144-02
la captor*

G960144- 14 -O-P



G960144- 15 -O-P



*Dave
on
caps*



G960144- 16 -O-P

Dave

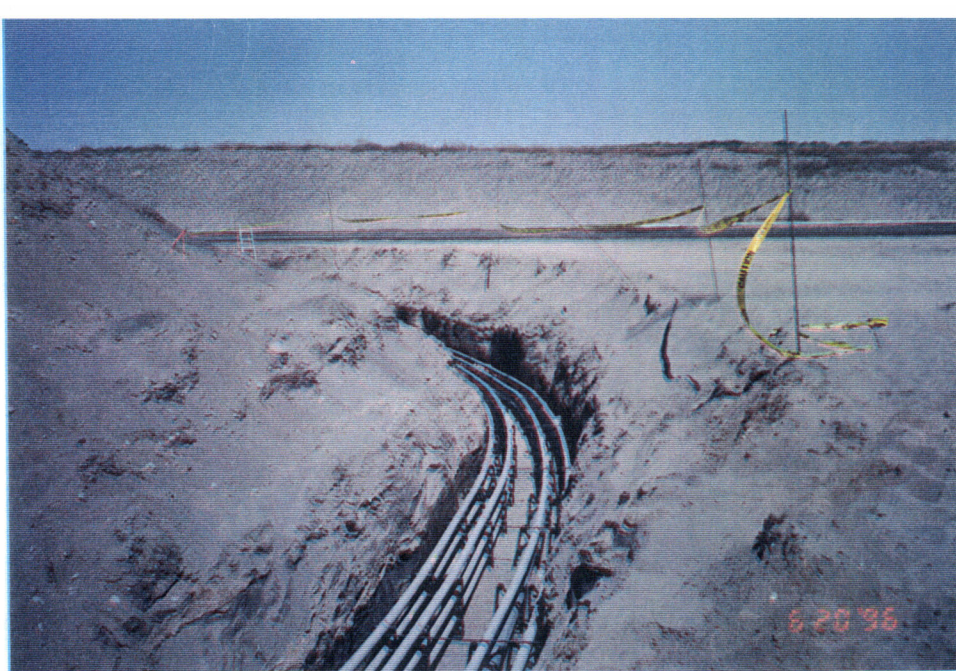


G960144- 17 -O-P



G960144- 18 -O-P

G960144- 19 -O-P



Same

G960144- 20-O-P



Same

G960144- 21 -O-P



Same as cap



G960144- 22 -O-P



G960144- 23 -O-P

Same



G960144- 24 -O-P



G960144-z5 -O- P

same