

G960168-01 - O-P

- 1- Positioning Beam Tube Enclosure lifting device over Type 'A' beam tube enclosure.

07/30/96

- 2- Preparing to lift Type 'A' beam tube enclosure.



G960168-02 - O-P

G960168- 03 - 0P

- 3- Another view of the BTE lifting device on the Type 'A' enclosure.



07/30/96

G960168-04 - 0-P

- 4- Type 'A' showing typical cracking in the top of the arch.



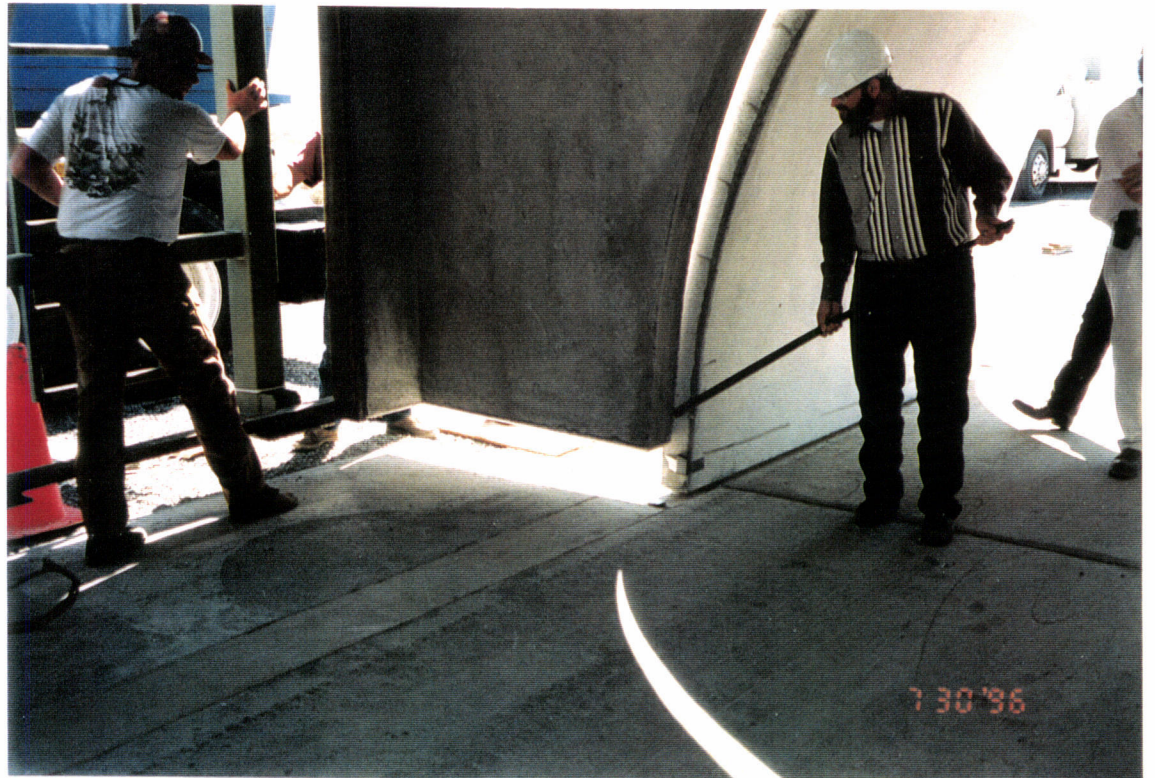


G960168-05 - O-FV

5- Close up of the crack in the Type 'A' enclosure.

6- Positioning Type 'A' enclosure in the alignment groove on the beam tube slab.

G960168-06 - OP



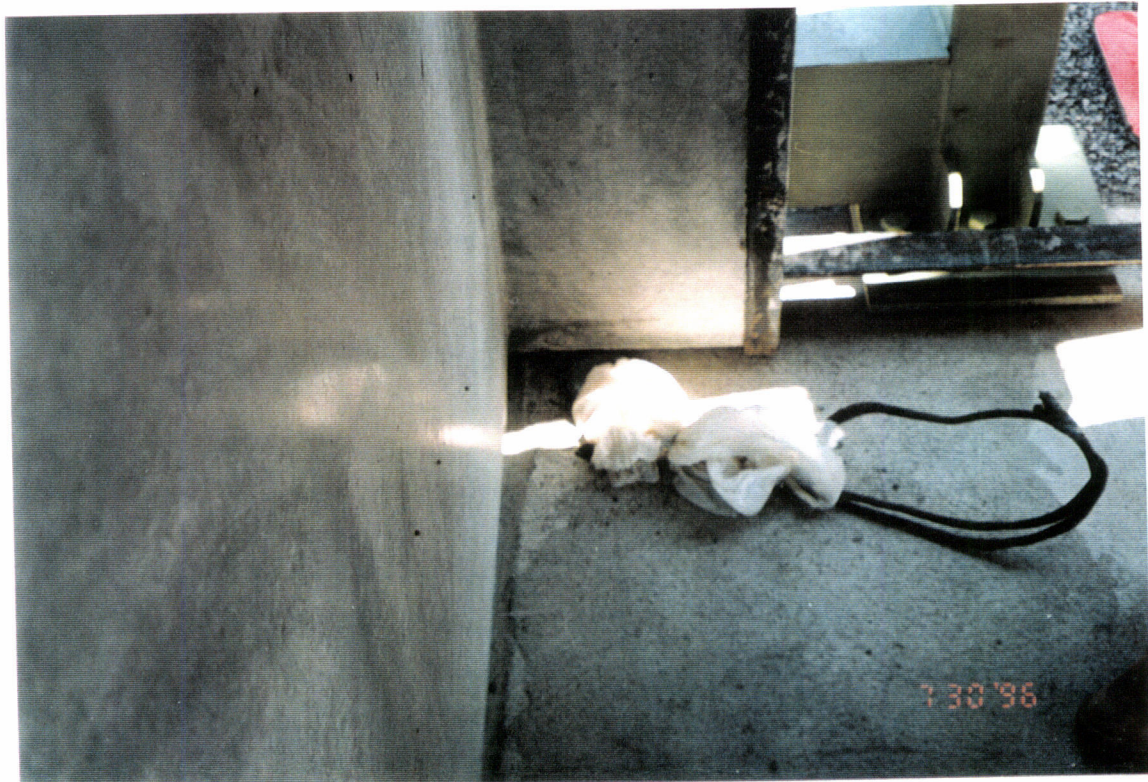


G960168-07 - OP

- 7- Final position of Type 'A' enclosure
on the beam tube slab.

G960168-08 - OP

- 8- Position of Type 'A' enclosure on beam
tube slab, at service entry. Interference between
enclosure and conduit identified.





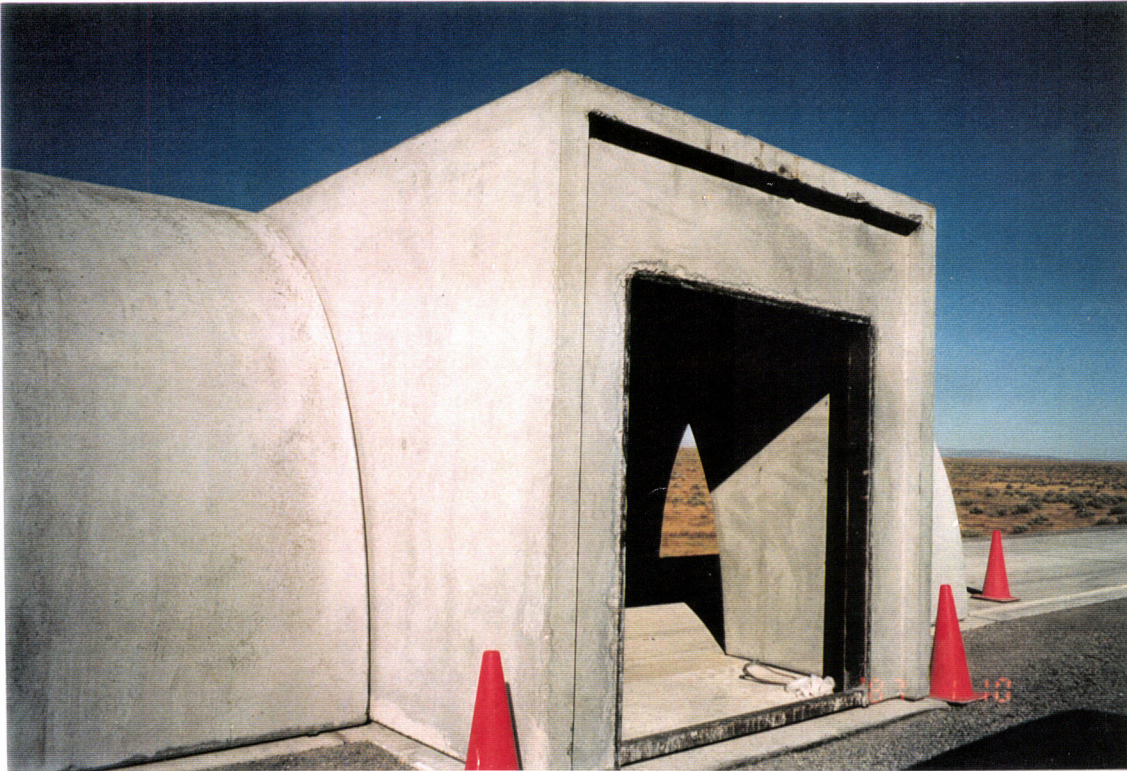
G960168-09 - O-P

9- Another view of the interference.

G960168-10 - O-P

10- Verifying the fit up of Beam Tube Enclosure modules.





G960168-11 - OP

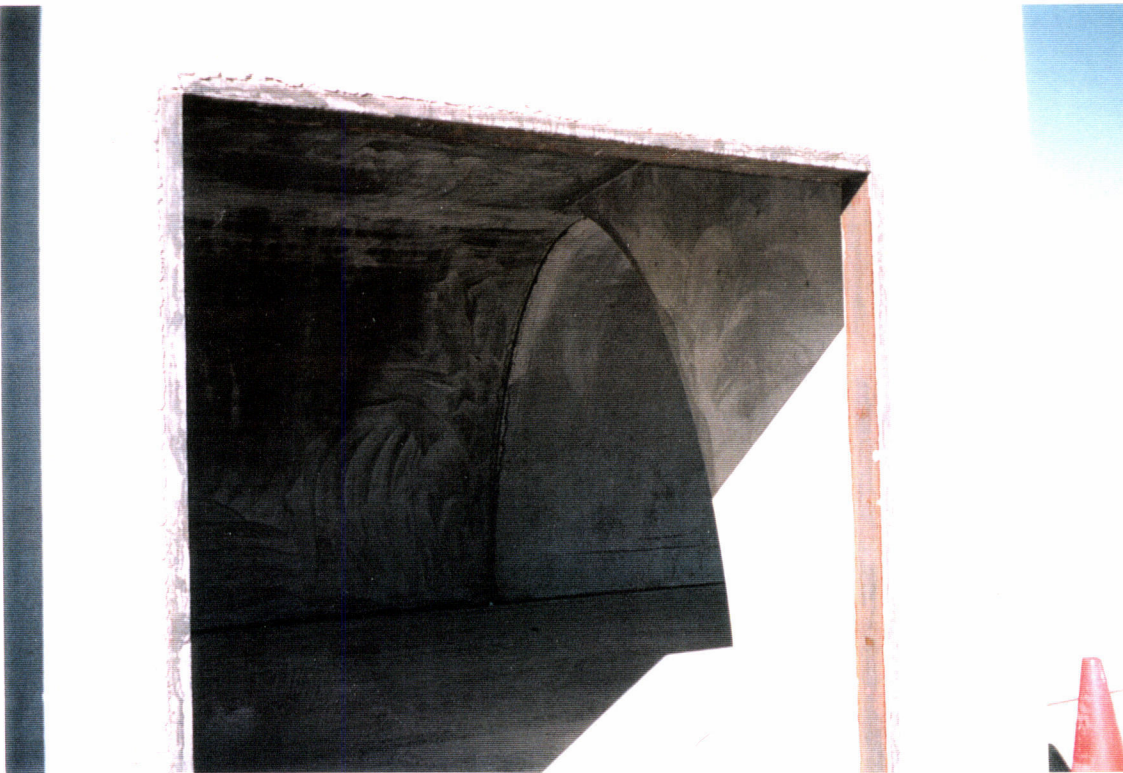
11- An outside view of the three enclosures (2 Type 'C', 1 Type 'A') together on the beam tube slab.

08/02/96

G960168- 12 - ¹²⁻OP

12- A view looking through the three enclosures while in place on the beam tube slab.

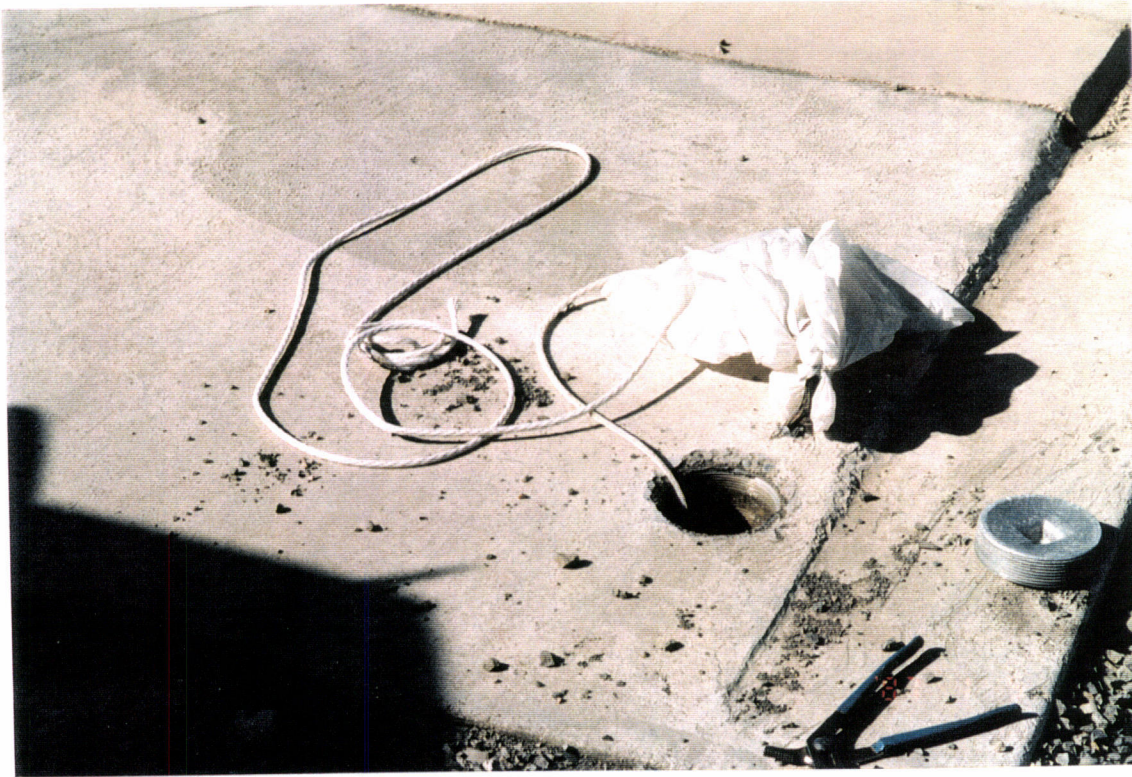




G960168-13 - OP

13- A look through the service entrance, while on the beam tube slab.

08/02/96



G960168- 14 - OP

14-15 Verification of the integrity from the conduit to the service entrance slab.

08/05/96

G960168- 15 - OP



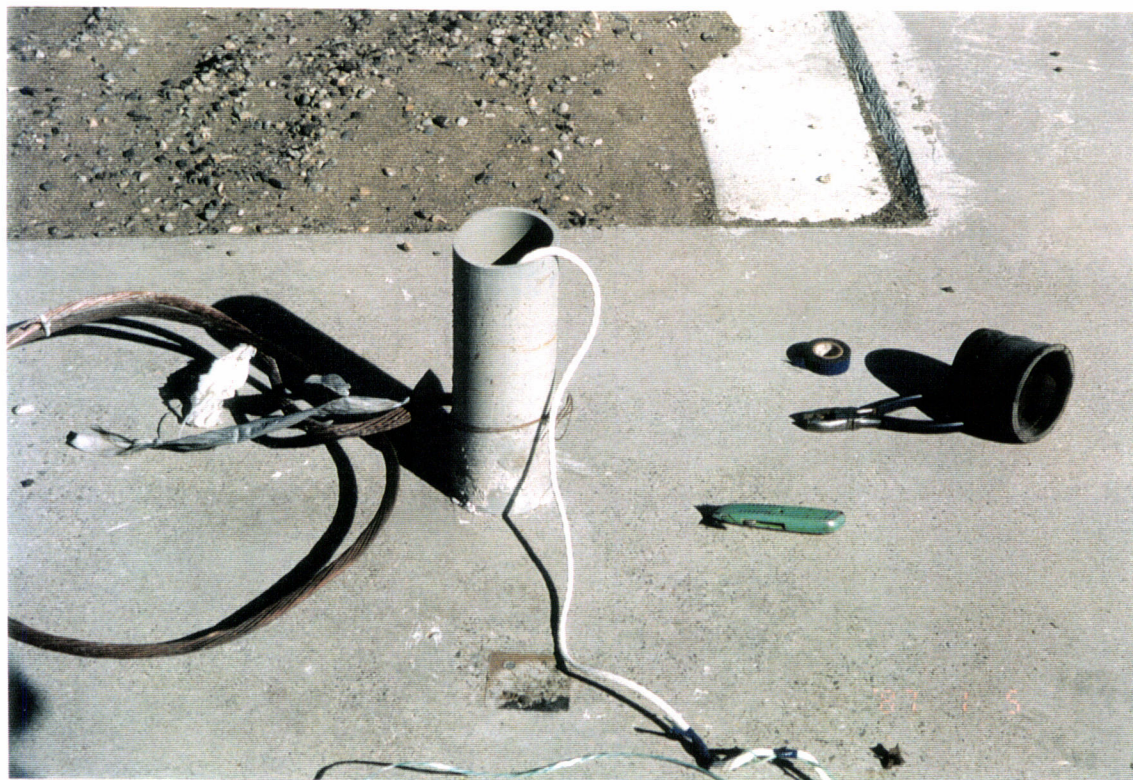


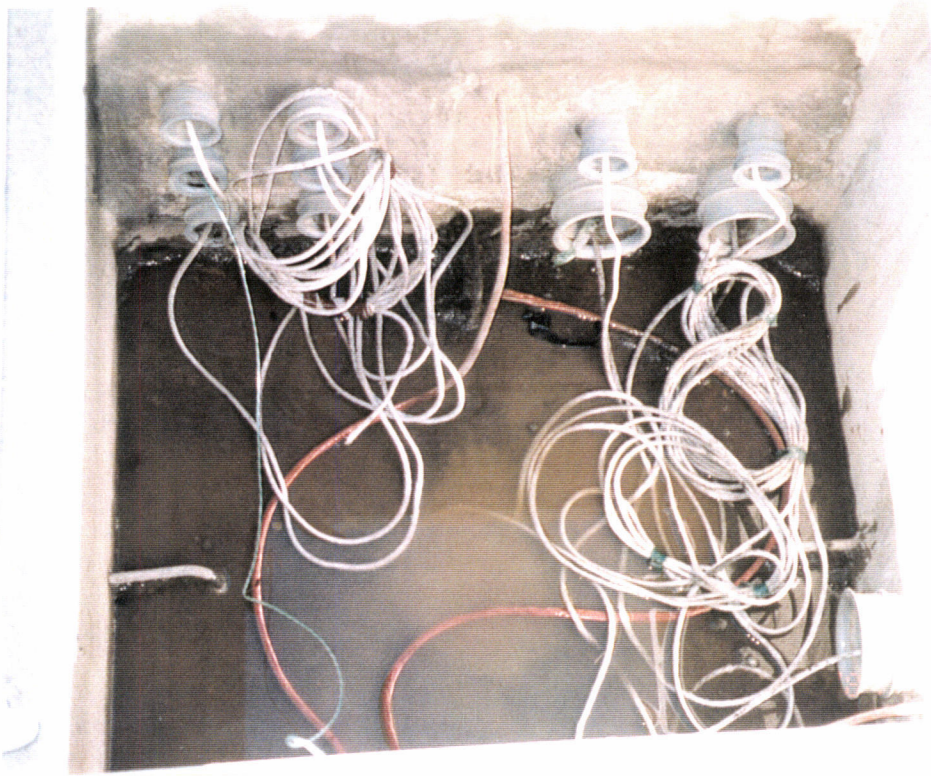
G960168-16 - O-P

16-17 Verification of the integrity from the conduit to the anchor slab

08/02/96

G960168-17 - O-P





G960168-18 - OP

18- Typical pull box around the chiller pad area.

08/06/96

19- SNAKE !!!!

G960168-19 - OP





G960168-20 - OP

20- Excavation begins for the technical slab at the SW mid station.

08/12/96

G960168-21 - OP

21- Excavation continues at the SW mid station.



08/12/96

22- A closer view of the excavation at the SW mid station.

G960168-22 - O-P





G960168-23 - OP

23- Access "road" to the transformer and chiller pads at the SW arm mid station.

08/13/96

24- Transformer pad and utility vault at the SW mid station.

G960168-24 - OP





G960168-25 - O-P

08/13/96

25- A view from the transformer pad above the SW mid station excavation.

26- 1st load of re bar arrives for SW arm mid station.

G960168-26 - O-P

08/14/96





G960168-27 - O-P

- 08/14/96 -

27- Rough excavation complete at SW mid station.

28- Marking area for the pads and footings at SW mid station.

G960168-28 - O-P



08/15/96



G960168-29 - OP

08/15/96

29- A view of the end station excavation on SW arm. (The water truck was just here!)

G960168-30 - OP

30- Another view of the SW arm end station excavation activities.

08/16/96





G960168-31 - OP

31- Laying out of the SW end station, side view.

08/26/96

G960168-32 - OP

32- Different view from the end of the slab, of the SW arm end station.





G960168-33 - O-P

08/26/96

33- Locating conduit for temporary power at SW arm end station.

34- Grinding high points on the NW arm beam tube slab, in preparation for beam tube supports.

G960168-34 - O-P



08/13/96



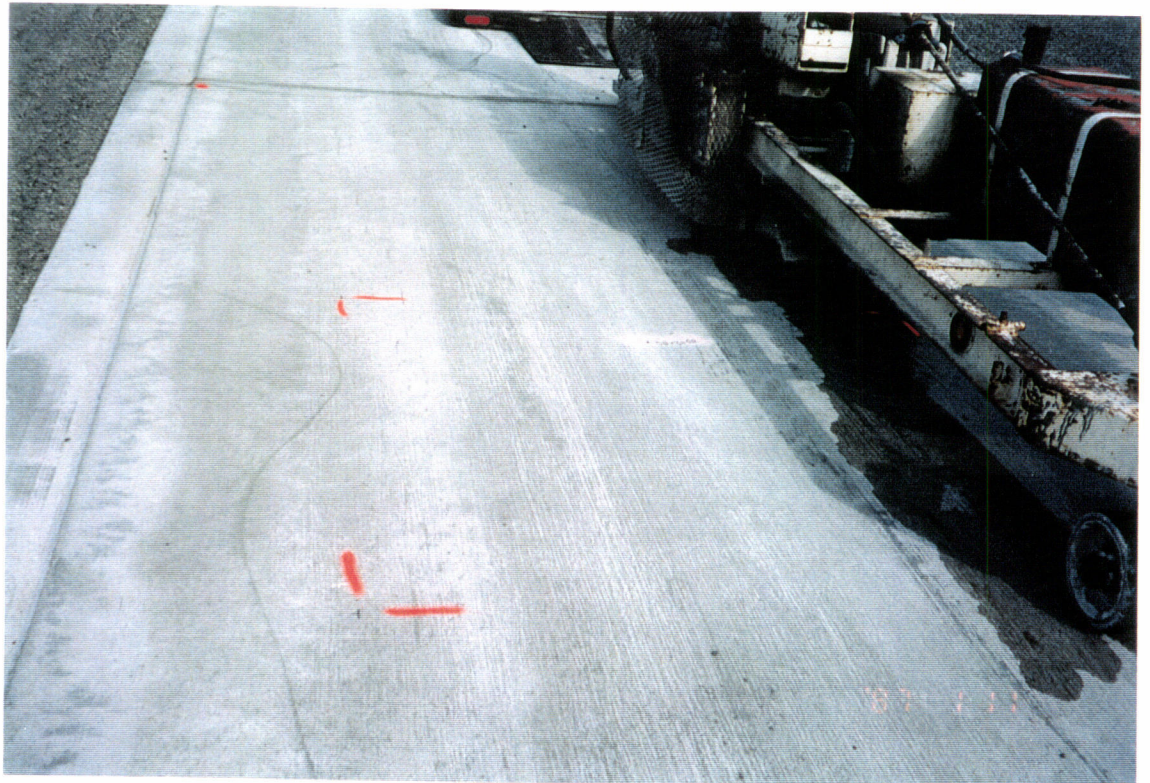
G960168-35 - OP

35- The orange markings are there to indicate where grinding needs to be done.

08/13/96

G960168-36 - O-P

36- A closer view of what needs to have grinding done.





G960168-37 - O-P

37- Grinding of the beam tube slab in progress.

08/13/96

G960168-38 - O-P

38- Completed grinding on the beam tube slab.





G960168-39 - OP

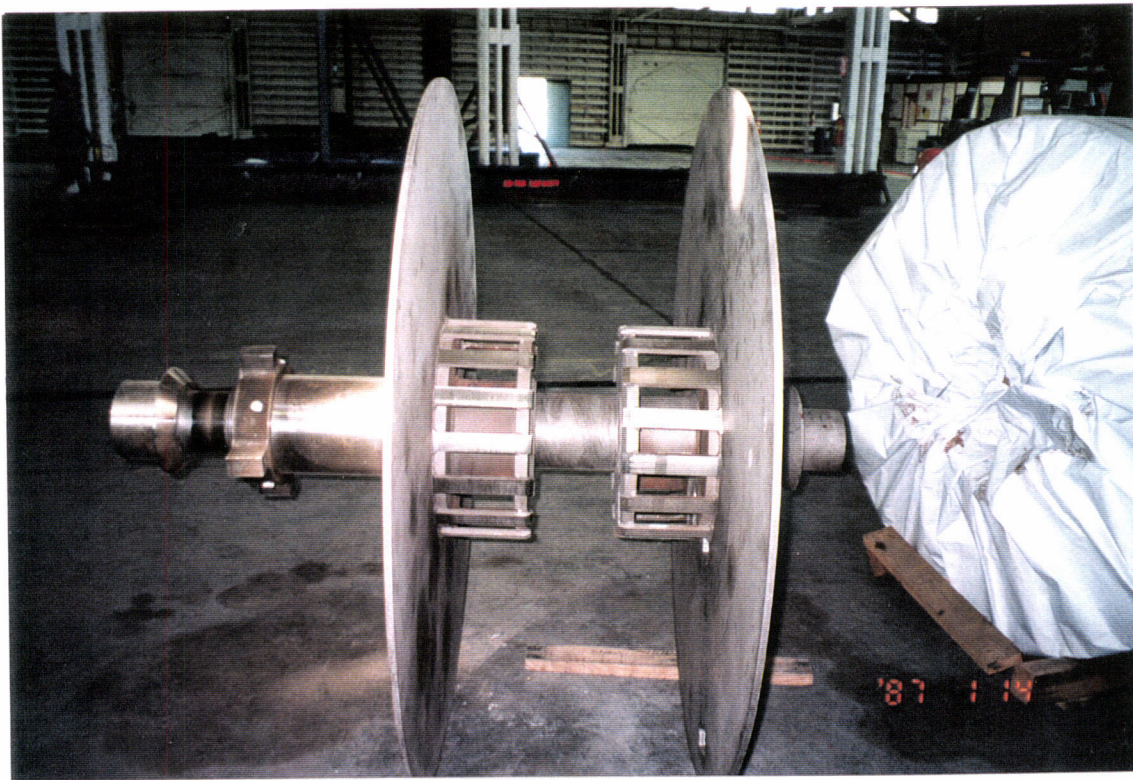
39- Beam tube practice sections at Big Pasco.

08/16/96

G960168-40 - OP

40- Tour of CBI Big Pasco plant with Parsons Engineering.





G960168-41 - O-P

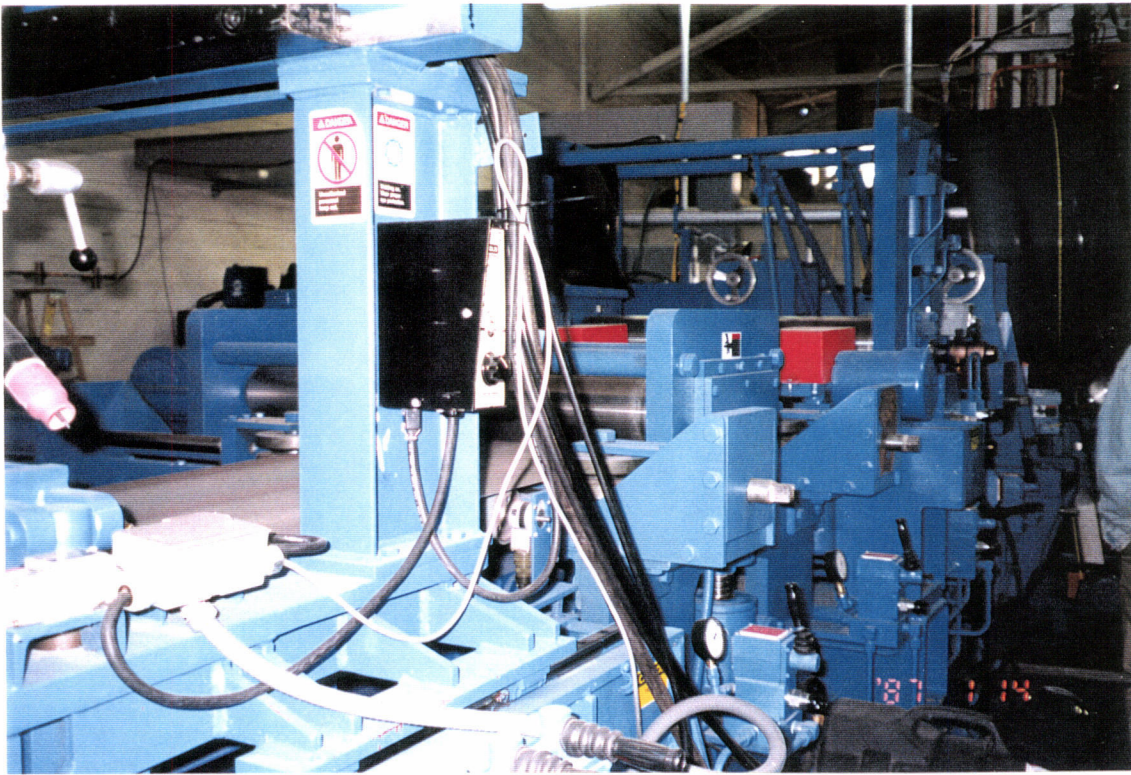
41- An empty spool for mounting the coil steel in the spiral tube mill.

08/16/96

G960168-42 - O-P

42- Spiral tube mill - on the coil feed side.





G960168-43 - OP

43- Another view of the spiral mill - the coil splice.

08/16/96

G960168-44 - OP

44- A close up view of the spiral mill.

