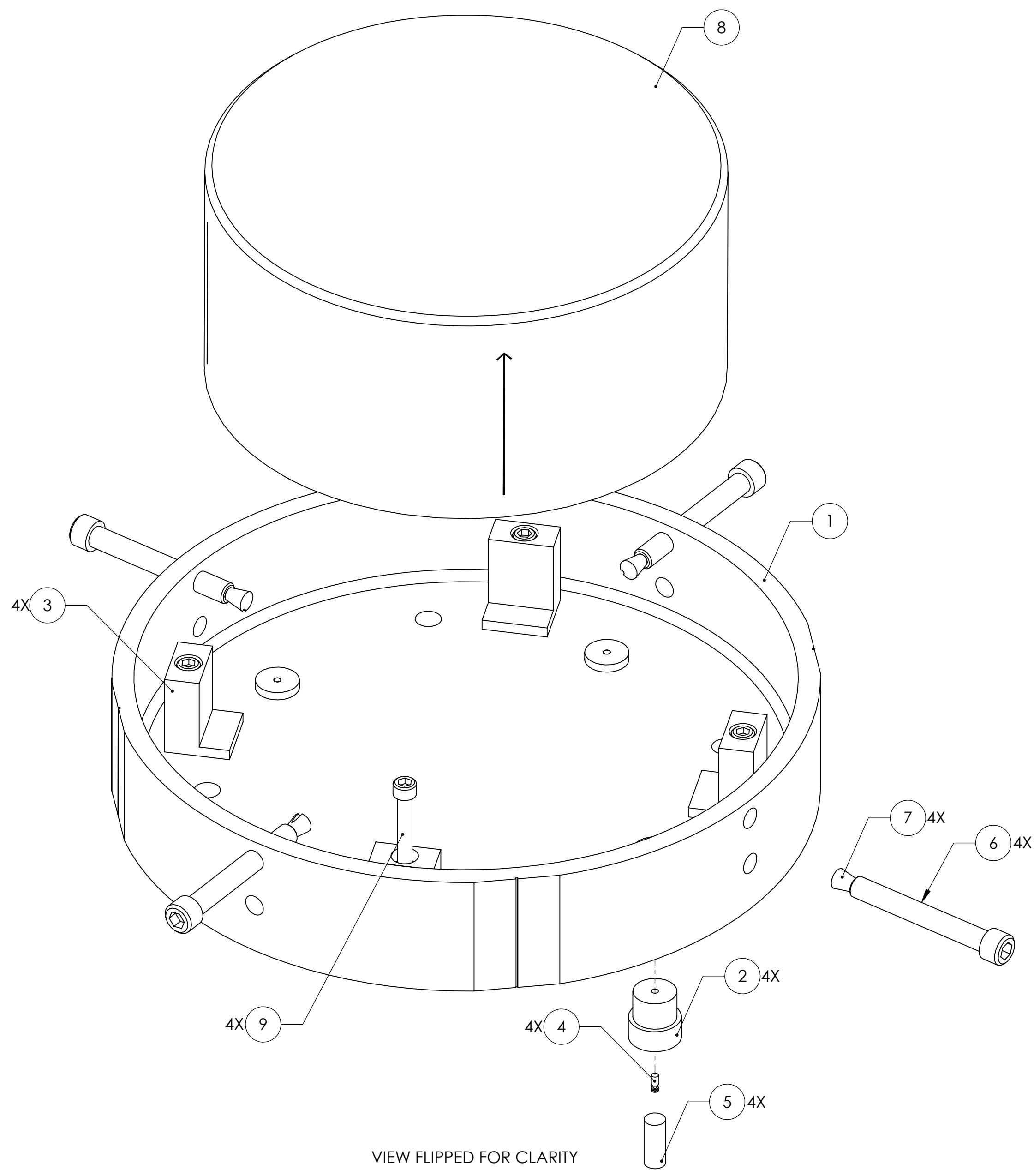


REV.	DATE	DCN #	DRAWING TREE #
v1	11 MAR 2011	E0900502	E0900353
-	-	-	-
-	-	-	-



ITEM NO.	PART NUMBER	DESCRIPTION	MATERIAL	REQ	SPARE	TOTAL
9	-	SCREW, SOCKET HEAD CAP, #8-32 UNC-2A X 1.25 LONG	300 SSTL	4	1	5
8	D0901174	SIGNAL RECYCLING MIRROR SUBSTRATE	--	REF	-	REF
7	D990148	Fluorel Tip, 1/4-20	SEE DRAWING	4	1	5
6	D1002405	SCREW, SOCKET HEAD CAP, 1/4-20 UNC-2A X 2 LONG	300 SSTL	4	1	5
5	D1100043	MAGNET GLUING WEIGHT	6061-T6 Al	4	-	4
4	D0902432	MAGNET/STANDOFF ASSEMBLY, HSTS TEST MASS	N/A	4	1	5
3	D1002342	STANDOFF BLOCK FOR HSTS RING FIXTURE	PFA440 HP (PRESHRUNK)	4	-	4
2	D1002341	MAGNET BUSHING FOR HSTS RING FIXTURE	PFA440 HP (PRESHRUNK)	4	-	4
1	D0902542	MAGNET PLACEMENT RING, HSTS	6061-T6 Al	1	-	1

NOTES AND TOLERANCES: (UNLESS OTHERWISE SPECIFIED)

CALIFORNIA INSTITUTE OF TECHNOLOGY MASSACHUSETTS INSTITUTE OF TECHNOLOGY		PART NAME MAGNET GLUING RING FIXTURE, LOWER MASS			
SYSTEM ADVANCED LIGO	SUB-SYSTEM SUS	DESIGNER M. MEYER	13 SEP 2010	SIZE c	DWG. NO. D020427
MATERIAL N/A	FINISH N/A μinch	CHECKER M. MEYER	15 OCT 2010	APPROVAL	REV. v1
NEXT ASSY D040391		SCALE: 1:1		PROJECTION:	SHEET 1 OF 1