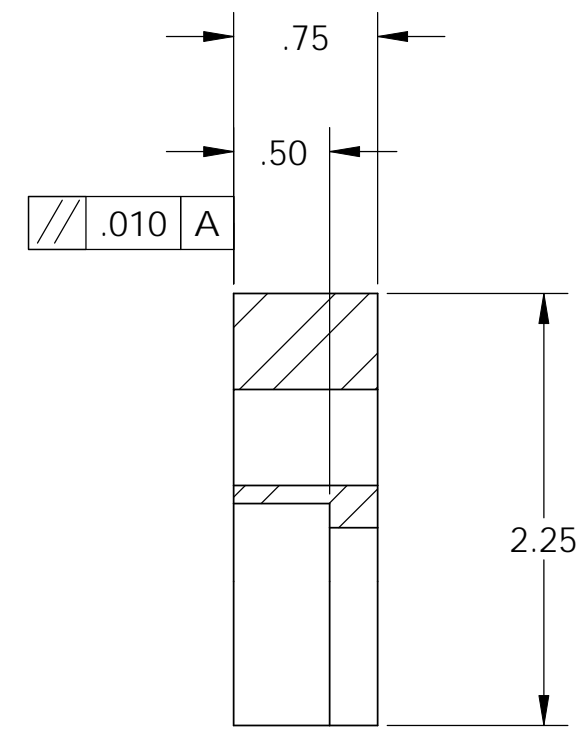
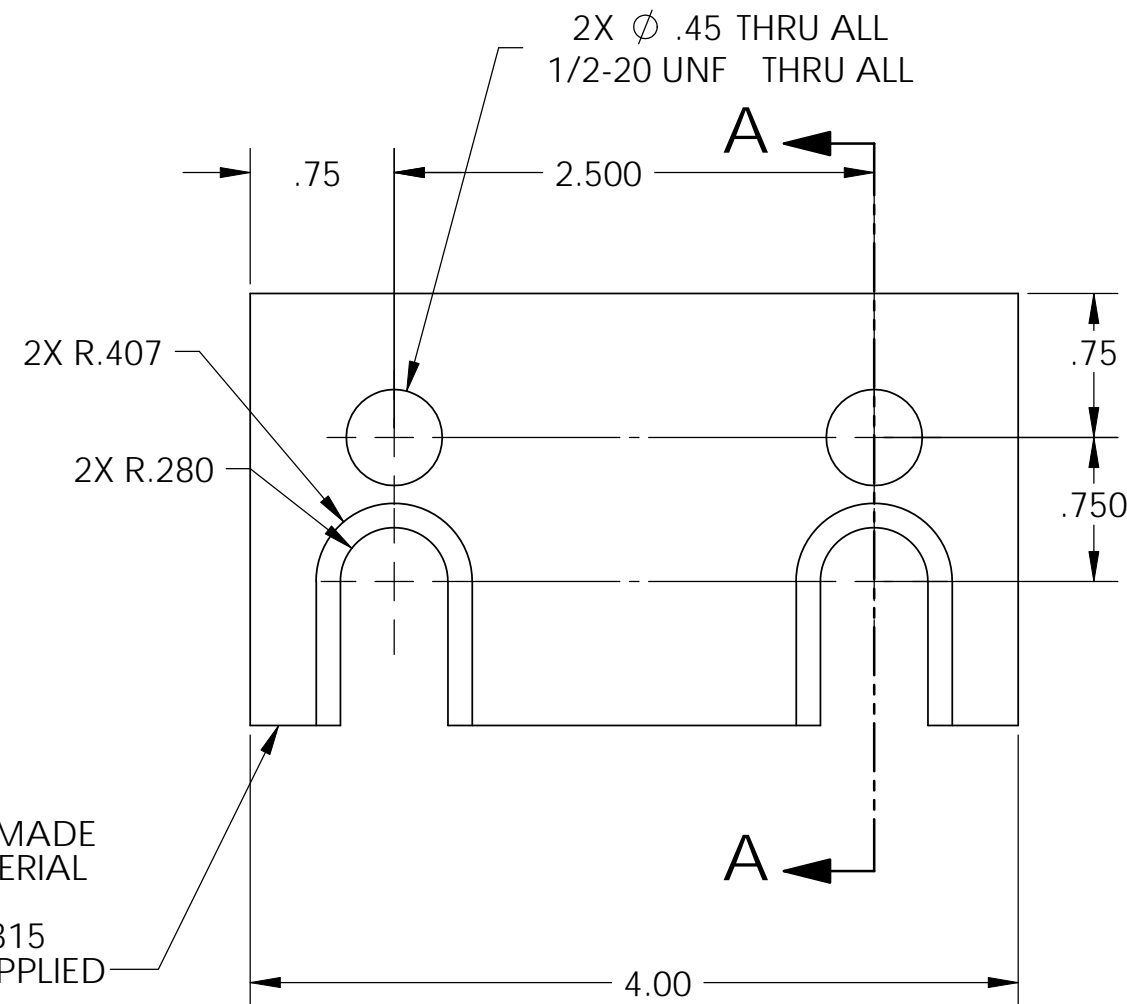
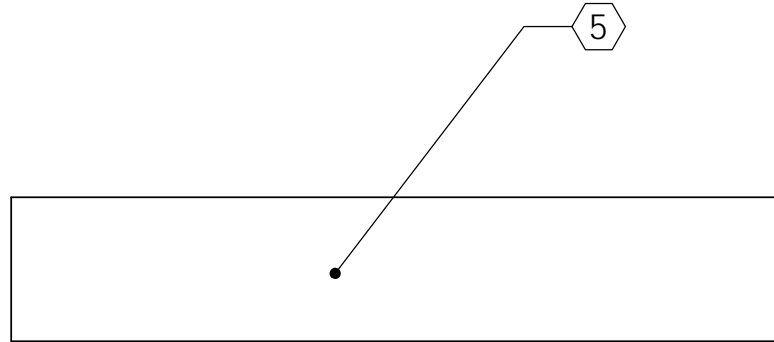


REV.	DATE	DCN #	DRAWING TREE #
v1	16 Mar. 2011	E1100015	E1100016

NOTES CONTINUED:

- ALL MACHINING FLUIDS MUST BE FULLY SYNTHETIC, FULLY WATER SOLUBLE AND FREE OF SULFUR, SILICONE AND CHLORINE.
- SCRIBE, ENGRAVE, OR MECHANICALLY STAMP (NO INKS OR DYES) DRAWING PART NUMBER, REVISION (AND VARIANT OR "TYPE" IF APPLICABLE ON NOTED SURFACE OF PART FOLLOWED ON THE NEXT LINE WITH A THREE DIGIT SERIAL NUMBER. SERIAL NUMBERS START AT 001 FOR THE FIRST ARTICLE AND PROCEED CONSECUTIVELY. USE MINIMUM 0.12 HIGH CHARACTERS, UNLESS THE SIZE OF THE PART DICTATES SMALLER CHARACTERS. A VIBRATORY TOOL MAY BE USED. EXAMPLE DXXXXXX-VY, TYPE-XX, S/N XXX.
- APPROXIMATE WEIGHT = 1.5168129 LB.
- ALL PARTS SHALL BE MANUFACTURED IN ACCORDANCE WITH LIGO SPECIFICATION E0900364.
- PAINT: ALL VISIBLE SURFACES (exclude fastening hardware) EXCEPT AREAS IDENTIFIED BY M MEDIUM BLUE SHERWIN WILLIAMS (POLANE (R) T-PLUS POLYURETHANE ENAMEL) #SW-F63TX-L-2822-5864 PRIME WITH SHERWIN WILLIAMS INDUSTRIAL WASH PRIMER P60G2
- "OXI SOLV RUST INHIBITOR" TO BE APPLIED PER MFG. INSTRUCTIONS TO ALL UNPAINTED SURFACES. BOTH TAPPED AND THRU HOLES WILL BE PLUGGED DURING APPLICATION.



D1100316, PART PDM REV: X-002, DRAWING PDM REV: X-000

NOTES AND TOLERANCES: (UNLESS OTHERWISE SPECIFIED)				LIGO CALIFORNIA INSTITUTE OF TECHNOLOGY MASSACHUSETTS INSTITUTE OF TECHNOLOGY		PART NAME				
DIMENSIONS ARE IN INCHES		1. INTERPRET DRAWING PER ASME Y14.5-1994.		ADVANCED LIGO		SUB-SYSTEM		UNIFIED HYDRAULIC ACTUATOR BRACKET BASE 2, aLIGO HEPI		REV.
TOLERANCES: .XX ± .015 .XXX ± .005		2. REMOVE ALL SHARP EDGES, .03 x 45°.		SEI		DESIGNER	M.HAMMOND	17 Oct. 2003	SIZE	DWG. NO.
ANGULAR ± .5°		3. DO NOT SCALE FROM DRAWING.		MATERIAL		DRAFTER	M.HILLARD	16 Mar. 2011	B	D1100316
		FINISH		NEXT ASSY		CHECKER	M.HAMMOND	16 Oct. 2003	v1	
		AISI 1018 Steel Cold Rolled		D1100144, D1100146 D1100241, D1100242		APPROVAL	K.MASON	16 Mar. 2011	SCALE: 1:1	PROJECTION:
		63 μinch							SHEET 1 OF 1	