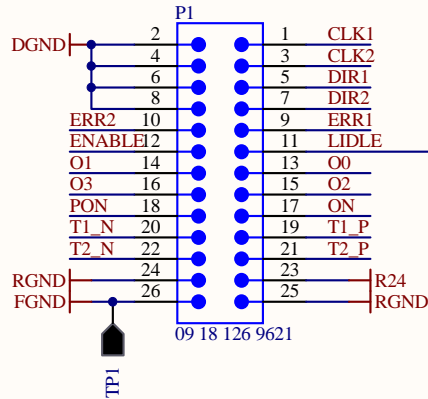
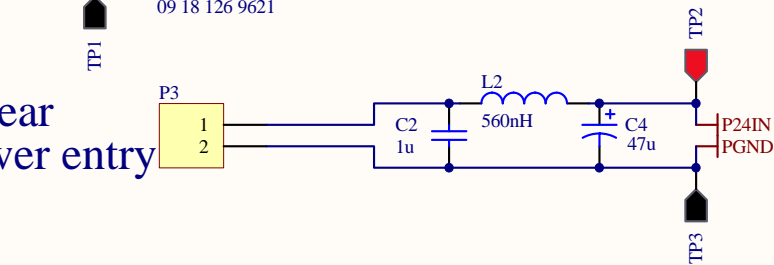




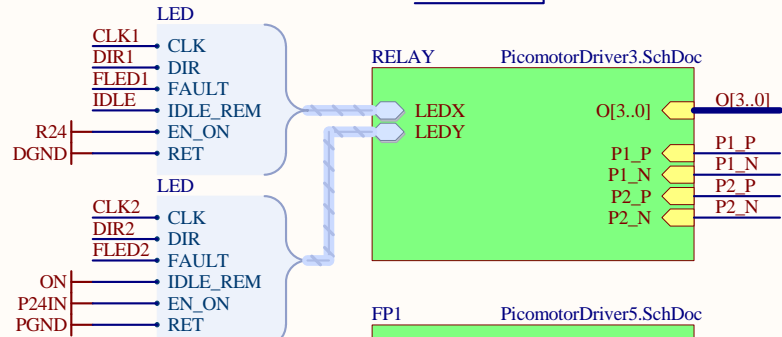
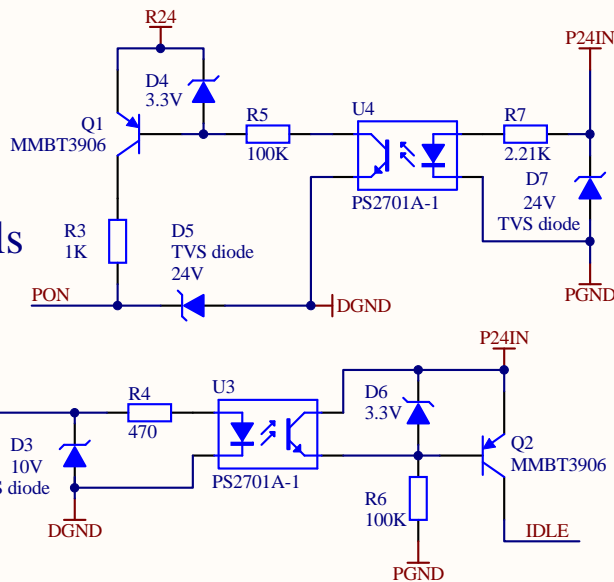
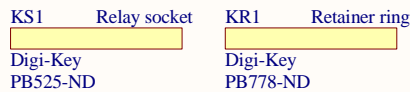
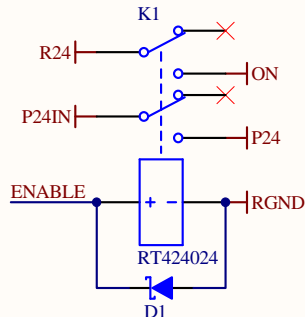
to rear DB25/male controls



to rear power entry

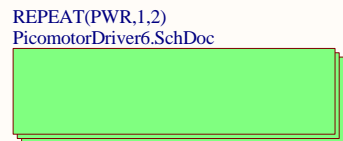
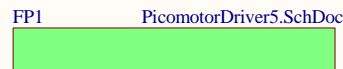
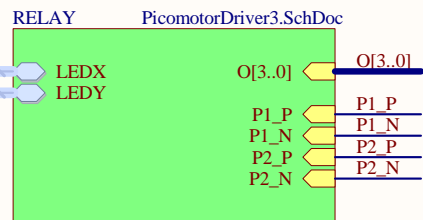
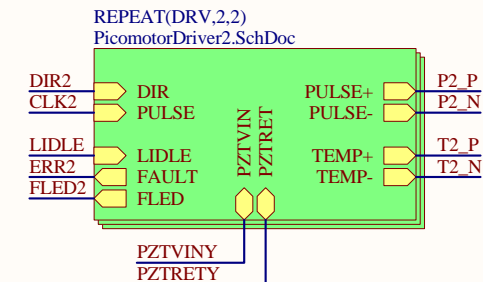
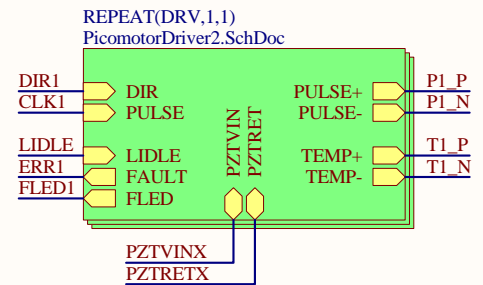


to fan



to X power board

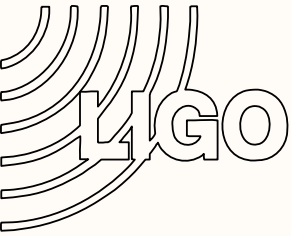
to Y power board



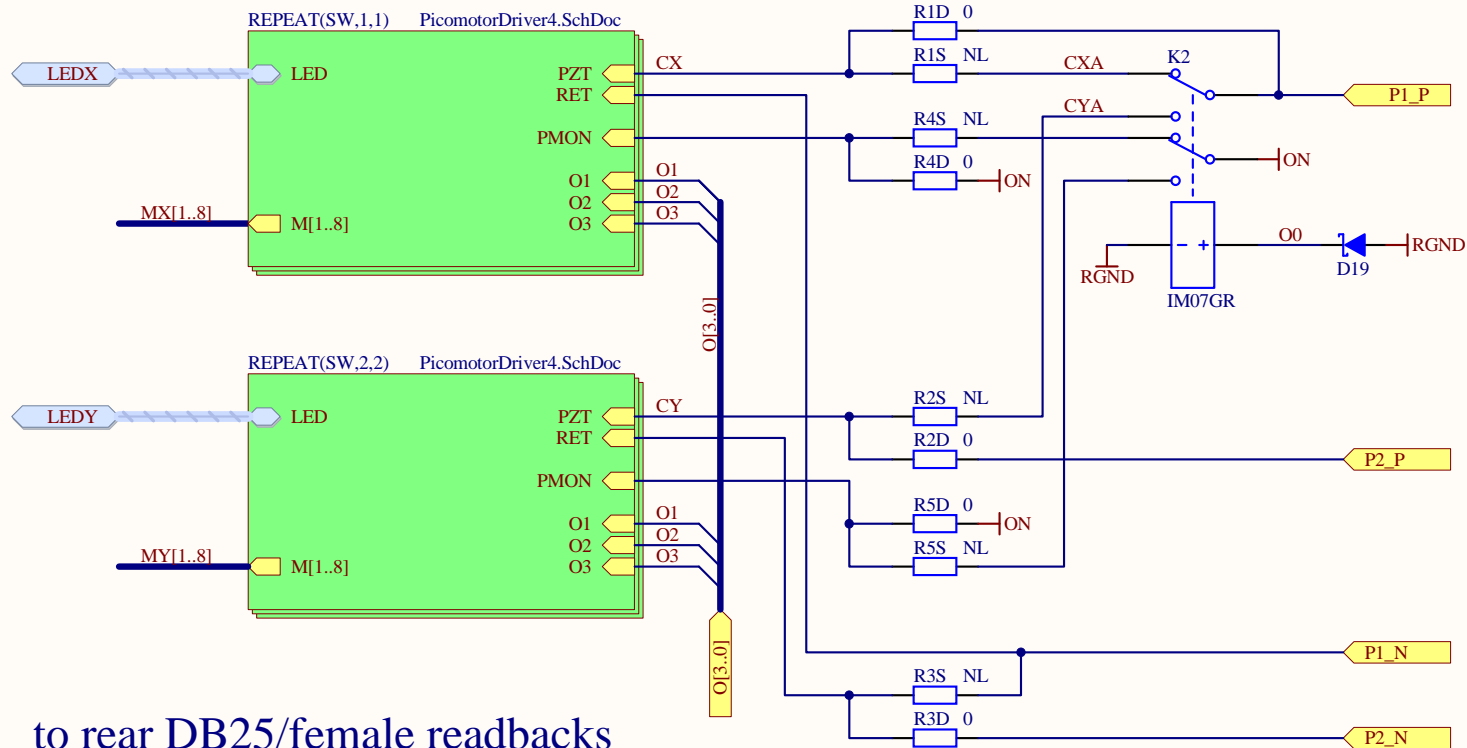
Use 3oz/2oz copper for outer/inner layers, respectively.  
Board thickness is 0.093".

Title			
Picomotor Driver			
Size	Number	Revision	
A	D1100326	2	
Date:	1/4/2012	Sheet 1 of 6	
File:	C:\Users\...\PicoMotorDriver1.SchDoc	Drawn By: Daniel Sigg	

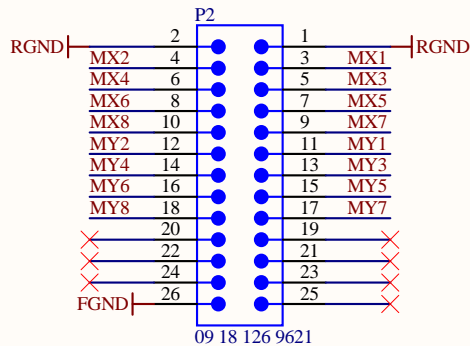




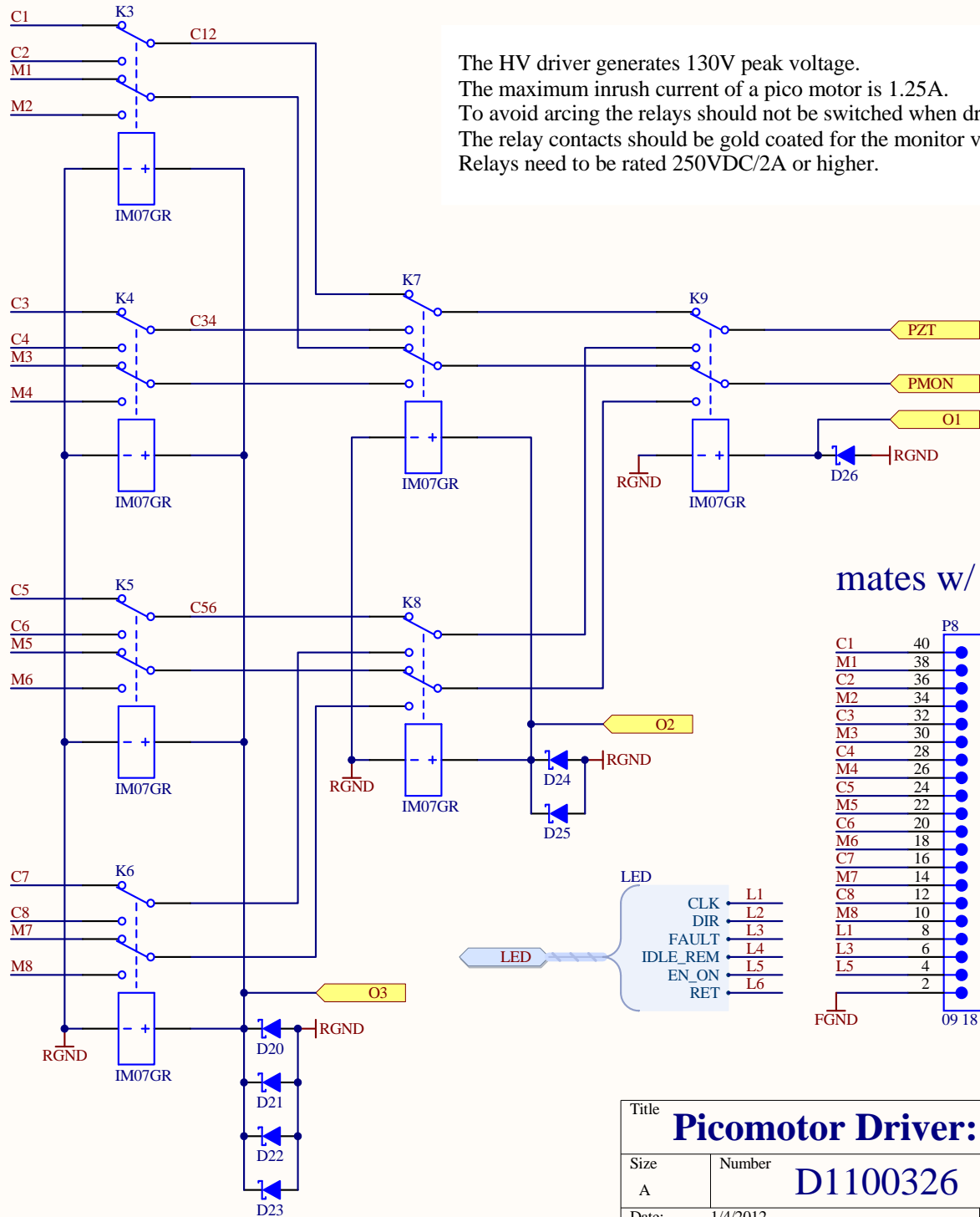
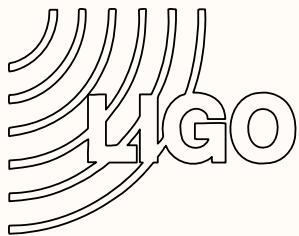
Jumper R1S, R2S, R3S, R4S and R5S for a single axis driver.  
Jumper R1D, R2D, R3D, R4D and R5D for a dual axis driver.



to rear DB25/female readbacks



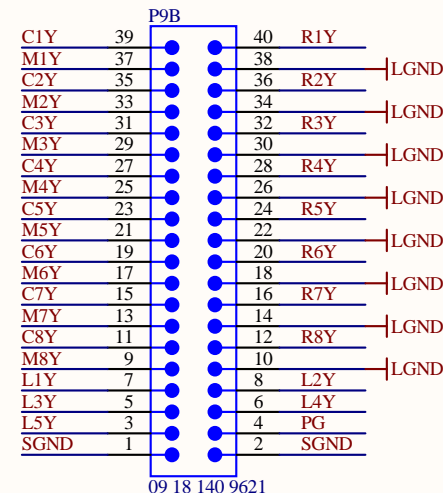
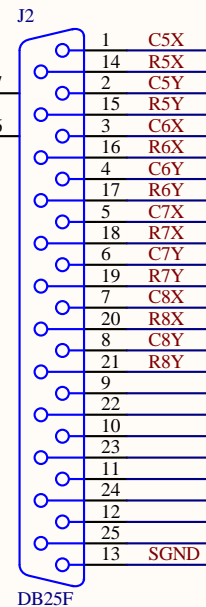
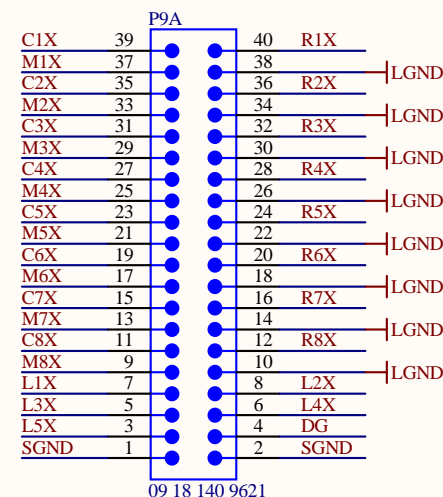
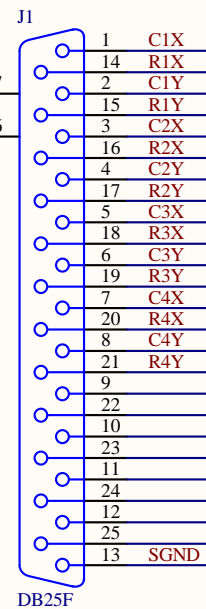
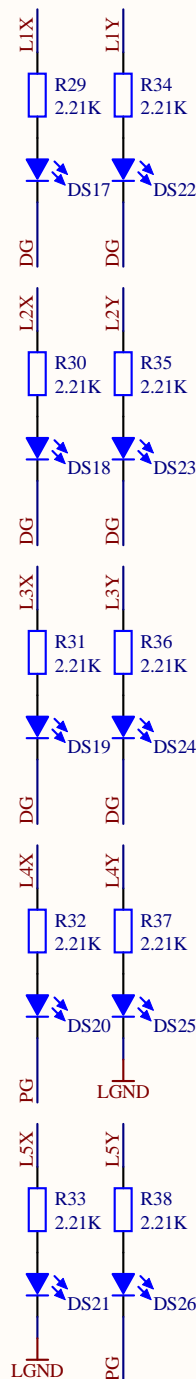
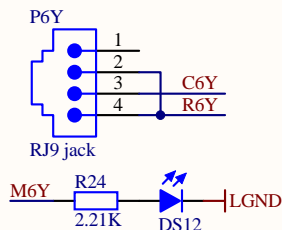
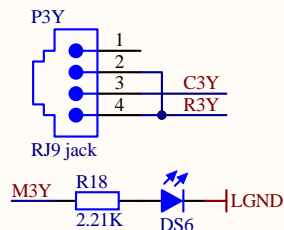
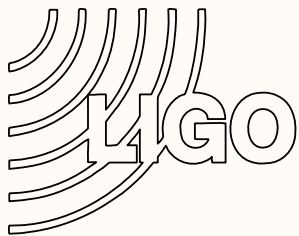
Title			<b>Picomotor Driver: Axes Switches</b>	
Size	Number	D1100326		Revision
A				2
Date:	1/4/2012	Sheet 3 of 6		
File:	C:\Users\...\PicoMotorDriver3.SchDoc	Drawn By: Daniel Sigg		



mates w/ front panel

C1	40	39	RET	RET
M1	38	37		RGND
C2	36	35	RET	
M2	34	33		RGND
C3	32	31	RET	RGND
M3	30	29		RGND
C4	28	27	RET	
M4	26	25		RGND
C5	24	23	RET	RGND
M5	22	21		RGND
C6	20	19	RET	RGND
M6	18	17		RGND
C7	16	15	RET	
M7	14	13		RGND
C8	12	11	RET	RGND
M8	10	9		RGND
L1	8	7	L2	RGND
L3	6	5	L4	
L5	4	3	L6	
	2	1		FGND

Title		
Picomotor Driver: Axes Switches		
Size	Number	Revision
A	D1100326	2
Date:	1/4/2012	Sheet 4 of 6
File:	C:\Users\...\PicoMotorDriver4.SchDoc	Drawn By: Daniel Sigg

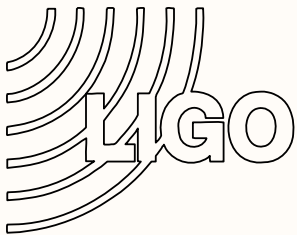


RJ-9:  
pin 1: black  
pin 2: red  
pin 3: green  
pin 4: yellow

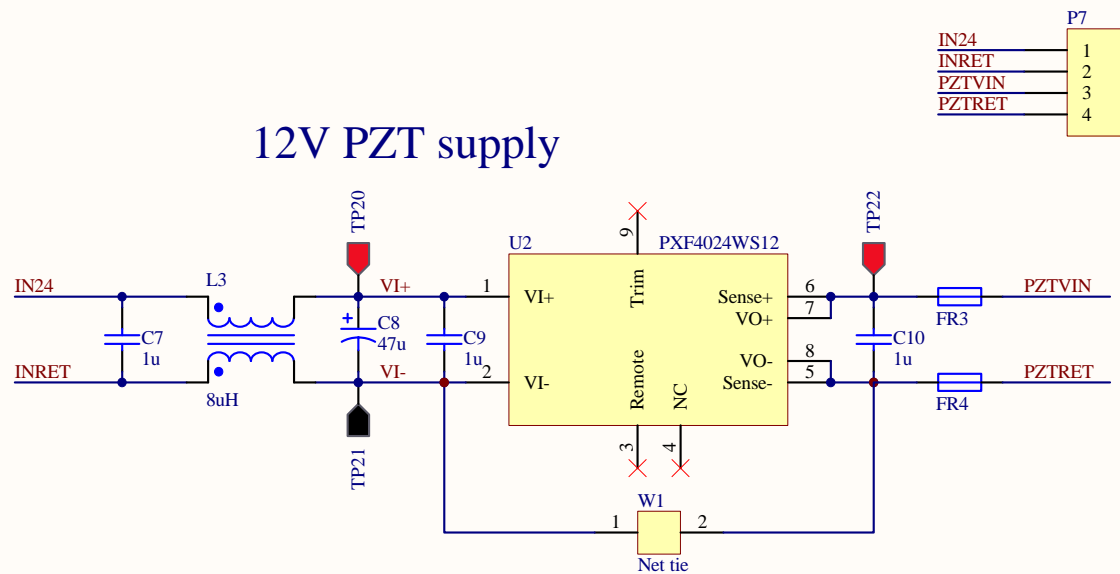
front panel

mates w/ main board

Title <b>Picomotor Driver: Front Panel</b>			
Size A	Number <b>D1100326</b>	Revision <b>2</b>	
Date:	1/4/2012	Sheet 5 of 6	
File:	C:\Users\...\PicoMotorDriver5.SchDoc	Drawn By:	Daniel Sigg



## 12V PZT supply



to main board power

U2A	Socket pin	U2D	Socket pin	U2G	Socket pin
U2B	Socket pin	U2E	Socket pin	U2H	Socket pin
U2C	Socket pin	U2F	Socket pin	U2I	Socket pin

Title <b>Picomotor Driver: Power Board</b>			
Size A	Number <b>D1100326</b>	Revision <b>2</b>	
Date:	1/4/2012	Sheet 6 of 6	
File:	C:\Users\...\PicoMotorDriver6.SchDoc	Drawn By: <b>Daniel Sigg</b>	