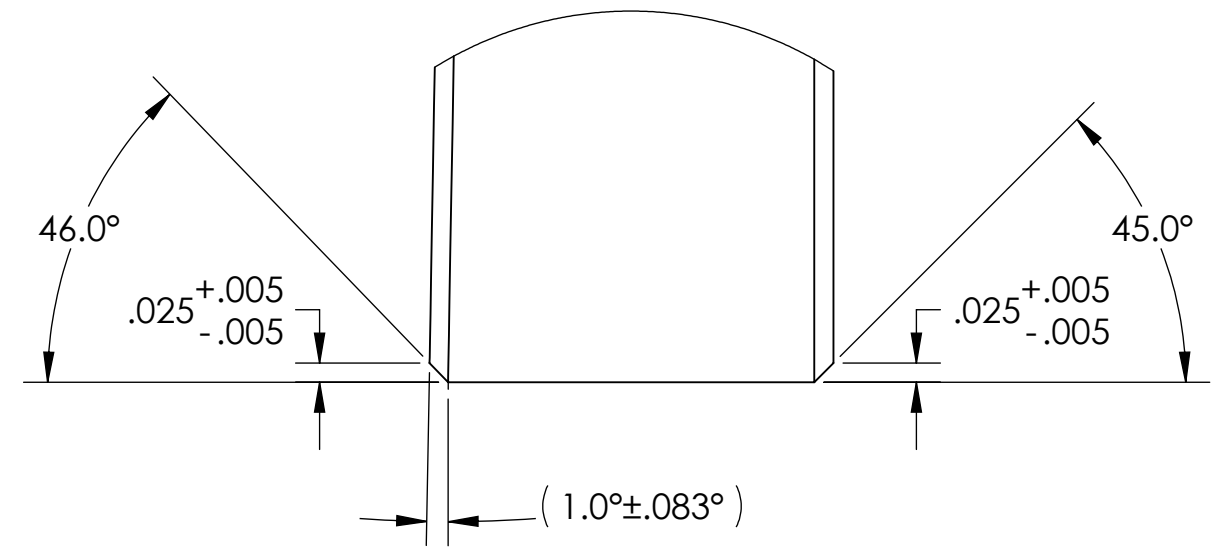
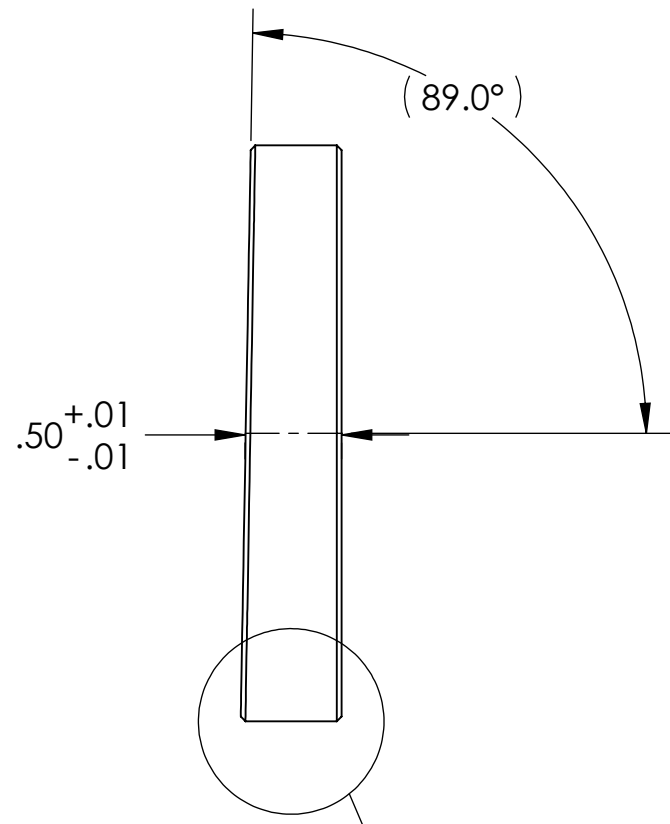
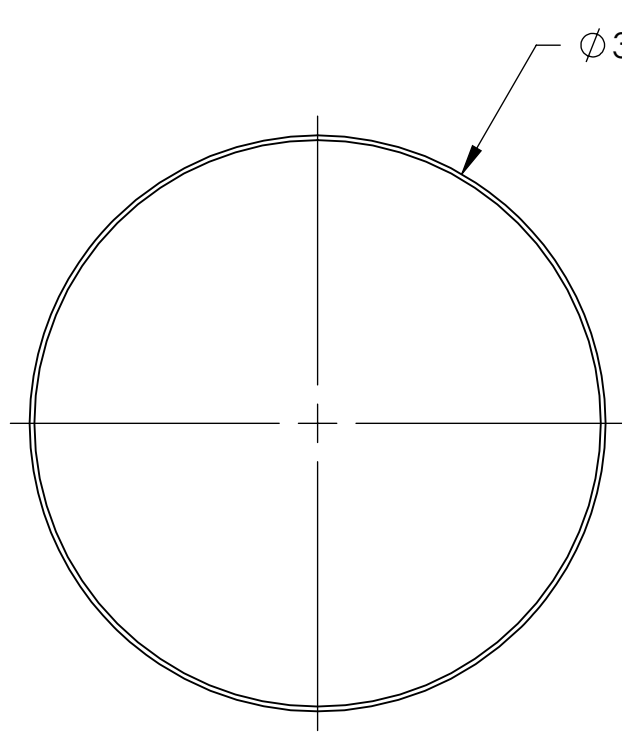
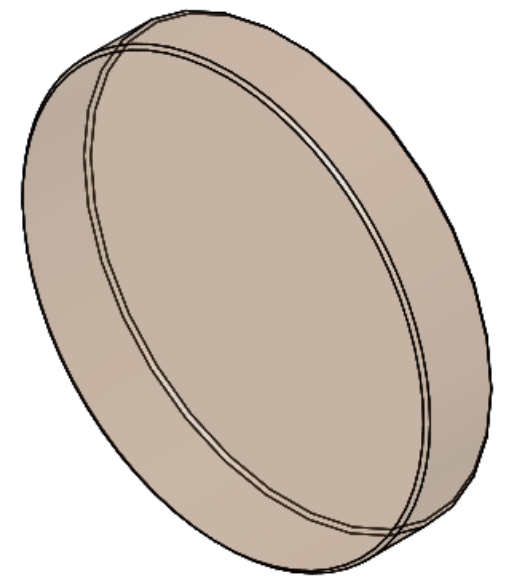


NOTES CONTINUED:
 [5] ZnSe SPECS:
 DIA: 3" (+0/-0.005")
 CT: 0.5" (+/-0.1")
 BEVEL: 0.025" (+/-0.005)
 WEDGE: 60 MIN (+/-5 MIN)
 SURF FIG: (LAMBDA/10) P-V AT 10.6um
 SURF QUAL: 40/20 SCRATCH/DIG
 COATING: AR/AR @ 10.6um

REV.	DATE	DCN #	DRAWING TREE #
v2	20 MAR 2011	-	E1100656-v1
-	-	-	-
-	-	-	-



DETAIL A
 SCALE 4 : 1

D1100439_VP_ZNSE WINDOW .5 THICK, 60 MIN WEDGE, PART PDM REV: X-005, DRAWING PDM REV: X-011

NOTES AND TOLERANCES: (UNLESS OTHERWISE SPECIFIED)	
DIMENSIONS ARE IN INCHES	
1. INTERPRET DRAWING PER ASME Y14.5-1994. 2. REMOVE ALL SHARP EDGES, .005-.015, FOR MACHINED PARTS. ROUND ALL EDGES APPROXIMATELY R.02 FOR SHEET METAL PARTS. 3. DO NOT SCALE FROM DRAWING. 4. ALL MACHINING FLUIDS MUST BE FULLY SYNTHETIC, FULLY WATER SOLUBLE AND FREE OF SULFUR, SILICONE, AND CHLORINE.	
TOLERANCES: .XX ± .01 .XXX ± .005	ANGULAR ± 0.5°
MATERIAL SEE NOTE [5]	FINISH [5]

CALIFORNIA INSTITUTE OF TECHNOLOGY MASSACHUSETTS INSTITUTE OF TECHNOLOGY	PART NAME .5 THICK, 60 MIN WEDGE, ZnSe WINDOW	
	SYSTEM ADVANCED LIGO	SUB-SYSTEM AOS
NEXT ASSY D1003194	DESIGNER A. LANGLEY 21 MAR 2011	SIZE DWG. NO. B D1100439
	DRAFTER A. LANGLEY 21 MAR 2011	REV. v1
	CHECKER M. JACOBSON 29 MAR 2011	SCALE: 1:1 PROJECTION:
	APPROVAL P. WILLEMS 30 MAR 2011	SHEET 1 OF 1