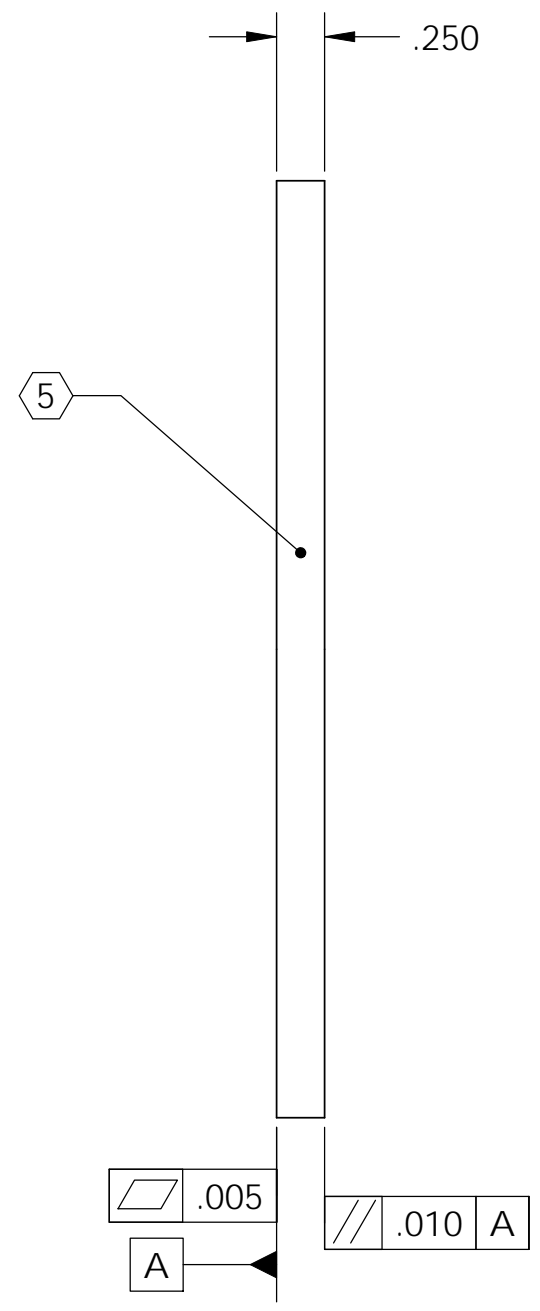
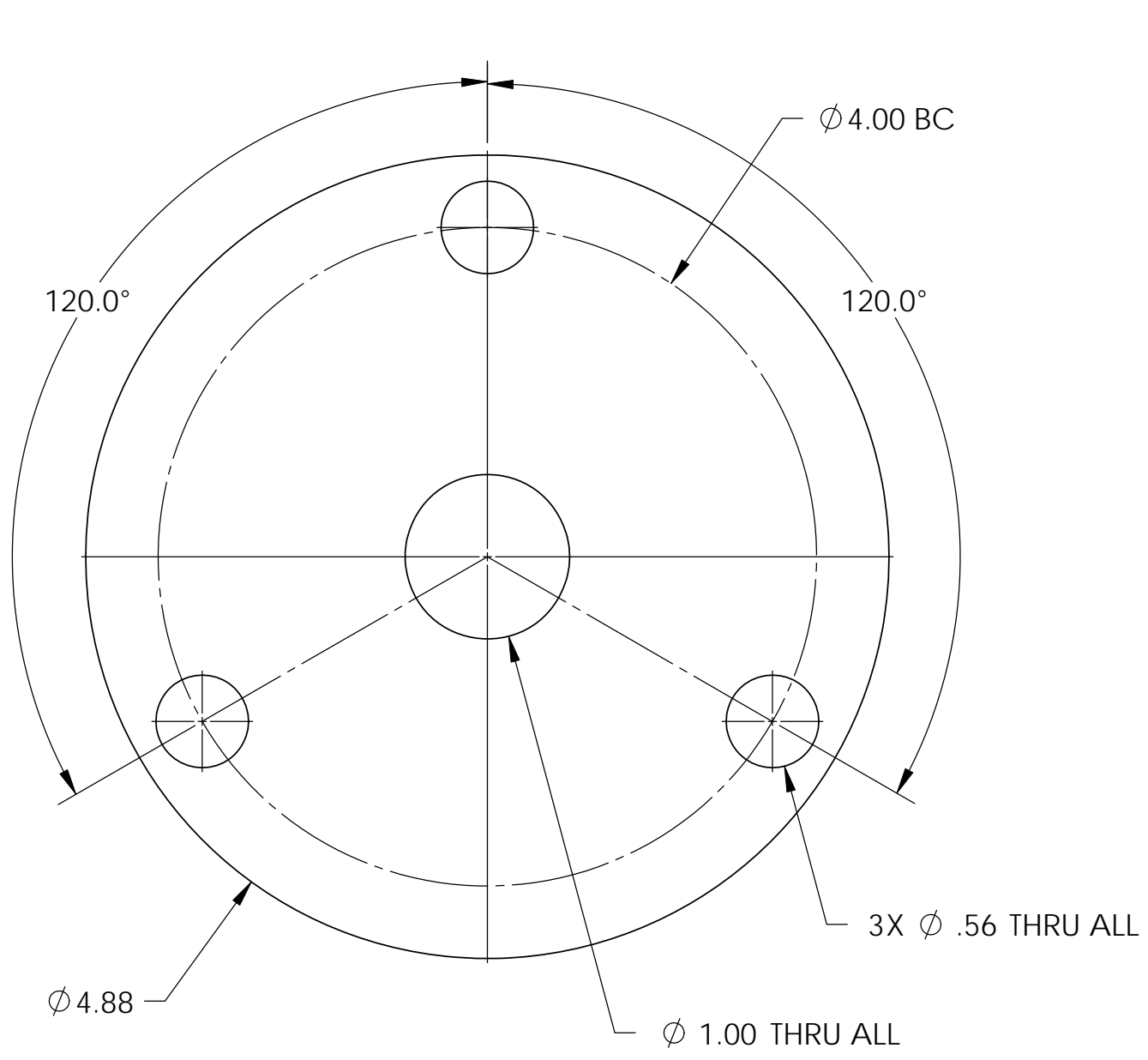


8 7 6 5 4 3 2 1

NOTES CONTINUED:

- 4. ALL MACHINING FLUIDS MUST BE FULLY SYNTHETIC, FULLY WATER SOLUBLE AND FREE OF SULFUR, SILICONE AND CHLORINE.
- 5. SCRIBE, ENGRAVE, OR MECHANICALLY STAMP (NO INKS OR DYES) DRAWING PART NUMBER, REVISION (AND VARIANT OR "TYPE" IF APPLICABLE ON NOTED SURFACE OF PART FOLLOWED ON THE NEXT LINE WITH A THREE DIGIT SERIAL NUMBER. SERIAL NUMBERS START AT 001 FOR THE FIRST ARTICLE AND PROCEED CONSECUTIVELY. USE MINIMUM 0.12 HIGH CHARACTERS, UNLESS THE SIZE OF THE PART DICTATES SMALLER CHARACTERS. A VIBRATORY TOOL MAY BE USED. EXAMPLE DXXXXXXX-VY, TYPE-XX, S/N XXX.
- 6. APPROXIMATE WEIGHT = 0.190 LB.
- 7. ALL PARTS SHALL BE MANUFACTURED IN ACCORDANCE WITH LIGO SPECIFICATION E0900364.

REV.	DATE	DCN #	DRAWING TREE #
v1	15 Mar. 2011	D1100253	D1100016



D1100474, PART PDM REV: X-001, DRAWING PDM REV: X-004

NOTES AND TOLERANCES: (UNLESS OTHERWISE SPECIFIED)				LIGO		CALIFORNIA INSTITUTE OF TECHNOLOGY MASSACHUSETTS INSTITUTE OF TECHNOLOGY		PART NAME				
DIMENSIONS ARE IN INCHES				ADVANCED LIGO		SUB-SYSTEM		UNIFIED HYDRAULIC ACTUATOR SHIM, aLIGO HEPI				
TOLERANCES: .XX ± .015 .XXX ± .005				SEI		DESIGNER		M.HILLARD	15 Mar. 2011	SIZE	DWG. NO.	REV.
ANGULAR ± .5°				MATERIAL		DRAFTER		M.HILLARD	15 Mar. 2011	B	D1100474	v1
1. INTERPRET DRAWING PER ASME Y14.5-1994. 2. REMOVE ALL SHARP EDGES, .03 x 45°. 3. DO NOT SCALE FROM DRAWING.				FINISH		CHECKER		K.MASON	15 Mar. 2011	SCALE: 1:1		PROJECTION:
6061-T6 Al				63 μinch		APPROVAL		K.MASON	15 Mar. 2011	SHEET 1 OF 1		
NEXT ASSY				D1100144, D1100146 D1100241, D1100242								

8 7 6 5 4 3 2 1