

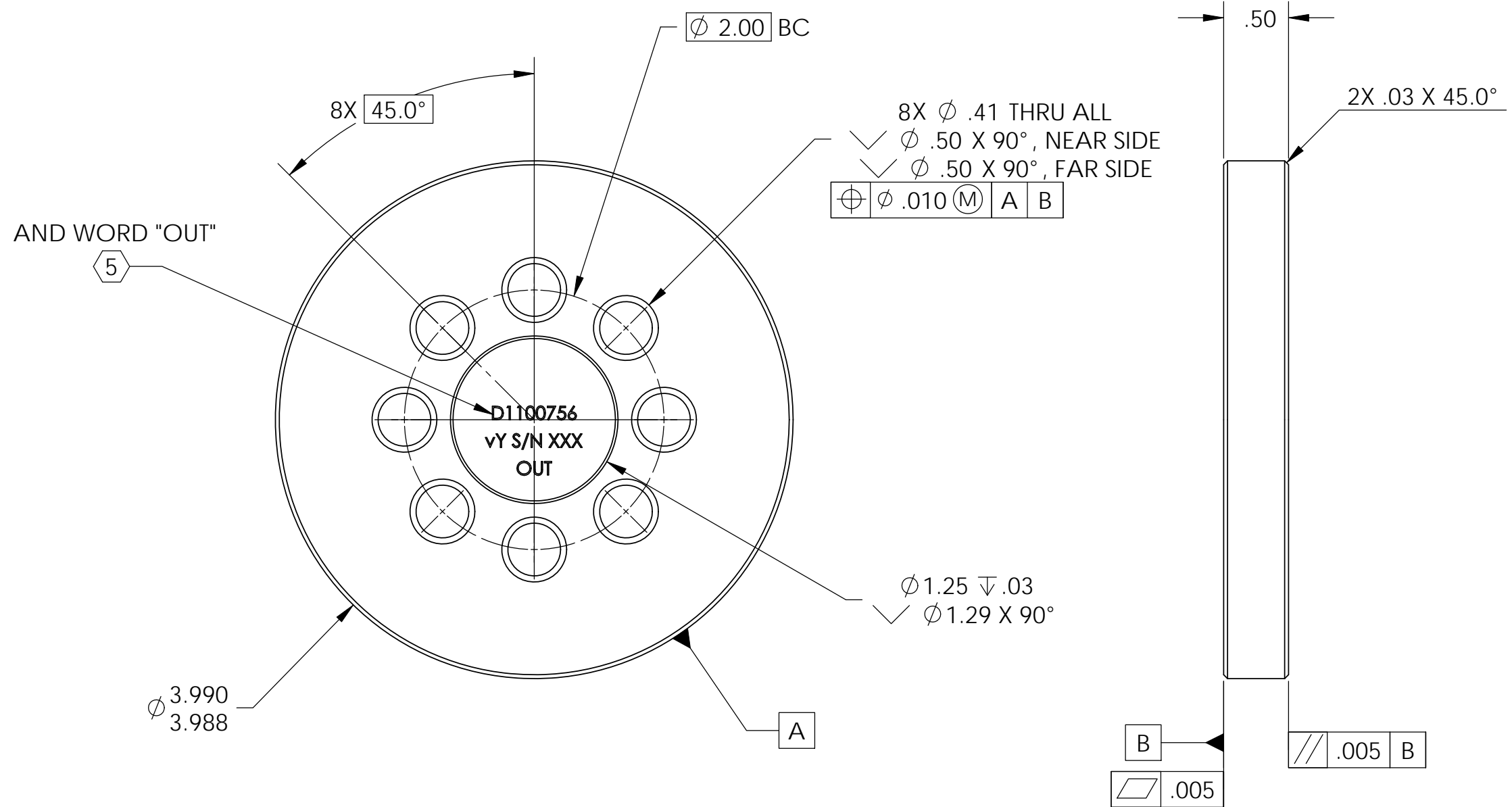
NOTES CONTINUED:

- 4. ALL MACHINING FLUIDS MUST BE FULLY SYNTHETIC, FULLY WATER SOLUBLE AND FREE OF SULFUR, SILICONE AND CHLORINE.
- 5. SCRIBE, ENGRAVE, OR MECHANICALLY STAMP (NO INKS OR DYES) DRAWING PART NUMBER, REVISION (AND VARIANT OR "TYPE" IF APPLICABLE ON NOTED SURFACE OF PART FOLLOWED ON THE NEXT LINE WITH A THREE DIGIT SERIAL NUMBER. SERIAL NUMBERS START AT 001 FOR THE FIRST ARTICLE AND PROCEED CONSECUTIVELY. USE MINIMUM 0.12 HIGH CHARACTERS, UNLESS THE SIZE OF THE PART DICTATES SMALLER CHARACTERS. A VIBRATORY TOOL MAY BE USED. EXAMPLE DXXXXXXX-VY, TYPE-XX, S/N XXX.
- 6. APPROXIMATE WEIGHT = 0.742 LB.
- 7. ALL PARTS SHALL BE MANUFACTURED IN ACCORDANCE WITH LIGO SPECIFICATION E0900364.
- 8. TO BE USED ONLY WITH D972610 REV F AND LOWER.

| REV. | DATE | DCN # | DRAWING TREE # |
|------|--------------|----------|----------------|
| v1 | 21 Apr. 2011 | E1100381 | - |
| | | | |

D
C
B
A

D
C
B
A



D1100756, PART PDM REV: X-000, DRAWING PDM REV: X-000

| NOTES AND TOLERANCES: (UNLESS OTHERWISE SPECIFIED) | | | | LIGO CALIFORNIA INSTITUTE OF TECHNOLOGY MASSACHUSETTS INSTITUTE OF TECHNOLOGY | | PART NAME | | | | | |
|--|--|---|--|---|--|----------------|--|------------|--|------------------------|--|
| DIMENSIONS ARE IN INCHES | | 1. INTERPRET DRAWING PER ASME Y14.5-1994. | | ADVANCED LIGO | | SUB-SYSTEM SEI | | DESIGNER | | M.HILLARD 20 Apr. 2011 | |
| TOLERANCES: .XX ± .015 .XXX ± .005 | | 2. REMOVE ALL SHARP EDGES, .03 x 45°. | | | | | | DRAFTER | | M.HILLARD 21 Apr. 2011 | |
| ANGULAR ± .5° | | 3. DO NOT SCALE FROM DRAWING. | | MATERIAL | | 304 SSSL | | FINISH | | 63 μinch | |
| | | | | NEXT ASSY | | D972610 | | CHECKER | | K.MASON 21 Apr. 2011 | |
| | | | | | | | | APPROVAL | | K.MASON 21 Apr. 2011 | |
| | | | | | | | | SCALE: 1:1 | | PROJECTION: | |
| | | | | | | | | | | SHEET 1 OF 1 | |