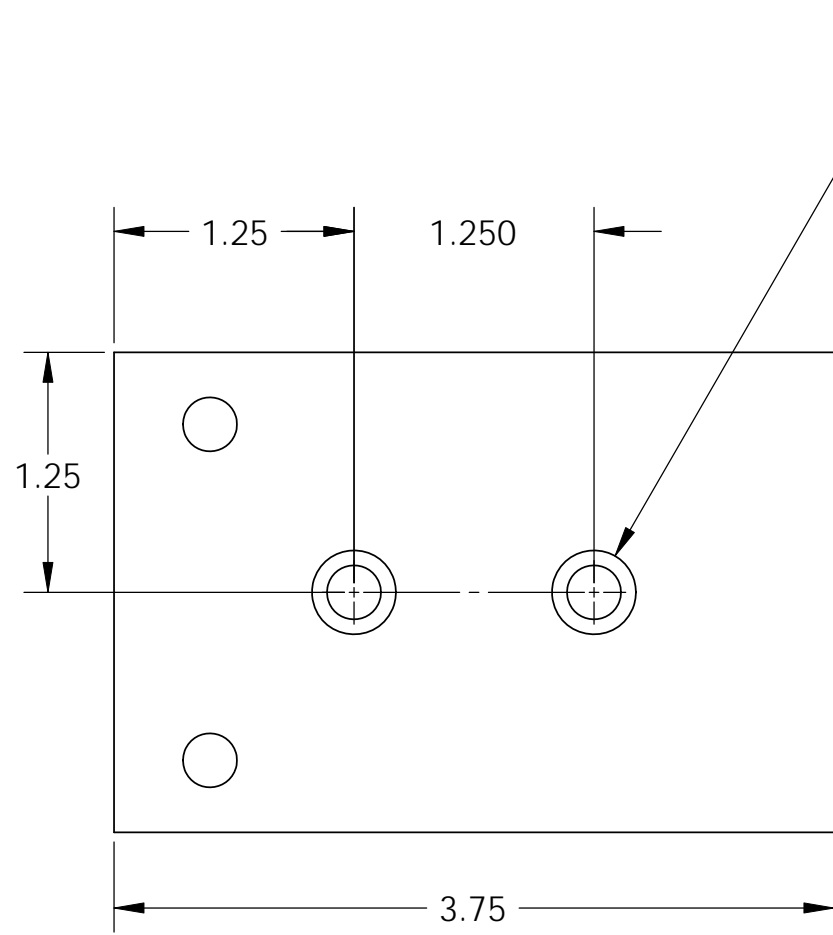


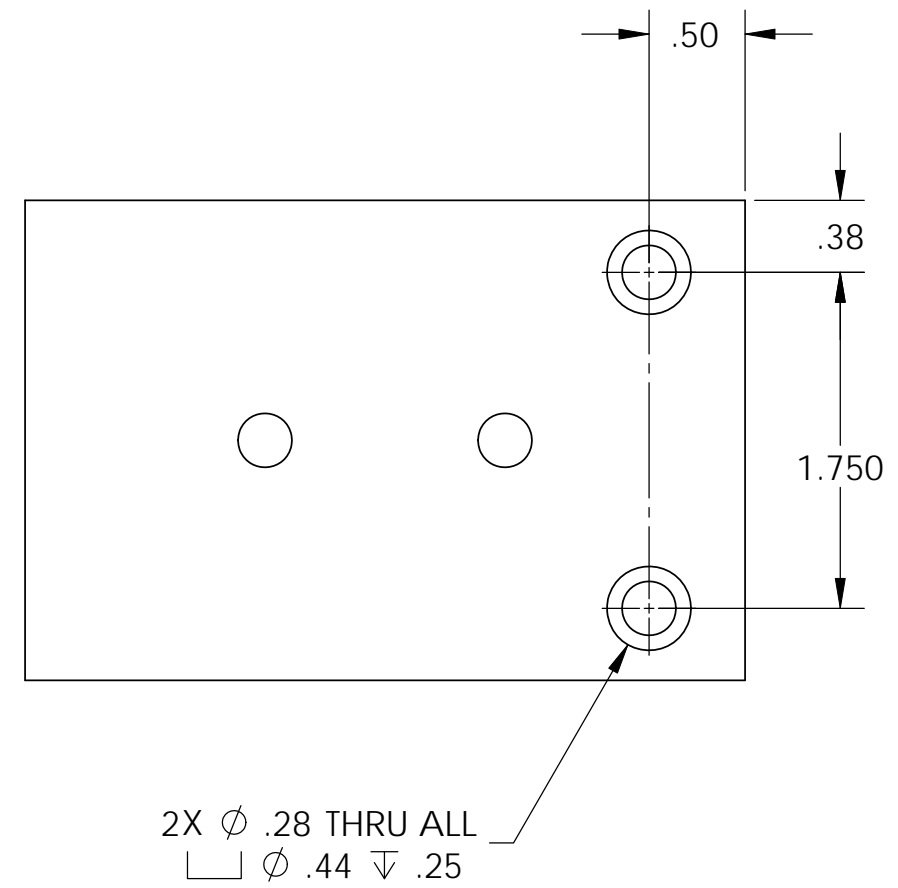
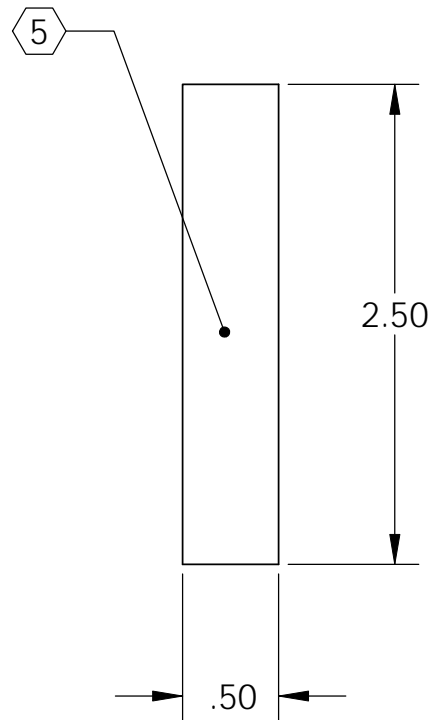
NOTES CONTINUED:

- 4. ALL MACHINING FLUIDS MUST BE FULLY SYNTHETIC, FULLY WATER SOLUBLE AND FREE OF SULFUR, SILICONE AND CHLORINE.
- 5. SCRIBE, ENGRAVE, OR MECHANICALLY STAMP (NO INKS OR DYES) DRAWING PART NUMBER, REVISION (AND VARIANT OR "TYPE" IF APPLICABLE ON NOTED SURFACE OF PART FOLLOWED ON THE NEXT LINE WITH A THREE DIGIT SERIAL NUMBER. SERIAL NUMBERS START AT 001 FOR THE FIRST ARTICLE AND PROCEED CONSECUTIVELY. USE MINIMUM 0.12 HIGH CHARACTERS, UNLESS THE SIZE OF THE PART DICTATES SMALLER CHARACTERS. A VIBRATORY TOOL MAY BE USED. EXAMPLE DXXXXXXX-VY, TYPE-XX, S/N XXX.
- 6. APPROXIMATE WEIGHT = 0.4 LB.
- 7. MACHINE ALL SURFACES TO REMOVE OXIDES AND MILL FINISH, USE OF ABRASIVE REMOVAL TECHNIQUES (INCLUDING SANDING OR SCOURING FOR MATTE FINISH) IS NOT ALLOWED. USE OF SCOTCH-BRITE OR SIMILAR PRODUCTS IS FORBIDDEN.
- 8. ALL PARTS SHALL BE MANUFACTURED IN ACCORDANCE WITH LIGO SPECIFICATION E0900364.

REV.	DATE	DCN #	DRAWING TREE #
v1	3 May 2011	E1100408	E1100409



2X ϕ .28 THRU ALL
 \square ϕ .44 ∇ .28



D1100766, PART PDM REV: X-004, DRAWING PDM REV: X-002

NOTES AND TOLERANCES: (UNLESS OTHERWISE SPECIFIED)				LIGO CALIFORNIA INSTITUTE OF TECHNOLOGY MASSACHUSETTS INSTITUTE OF TECHNOLOGY		PART NAME				
DIMENSIONS ARE IN INCHES		1. INTERPRET DRAWING PER ASME Y14.5-1994.		ADVANCED LIGO		SUB-SYSTEM		BOSEM 45 DEG MIRROR JIG END BLOCK		REV.
TOLERANCES: .XX ± .015 .XXX ± .005		2. REMOVE ALL SHARP EDGES, .03 x 45°.		SEI		DESIGNER	M.HILLARD	21 Apr. 2011	SIZE	DWG. NO.
ANGULAR ± .5°		3. DO NOT SCALE FROM DRAWING.		NEXT ASSY		DRAFTER	M.HILLARD	3 May 2011	B	D1100766
MATERIAL		FINISH		D1100764		CHECKER	J.LEWIS	3 May 2011	SCALE:	1:1
6061-T6 Al		63 μinch		D1100764		APPROVAL	C.TORRIE	3 May 2011	PROJECTION:	
										SHEET 1 OF 1