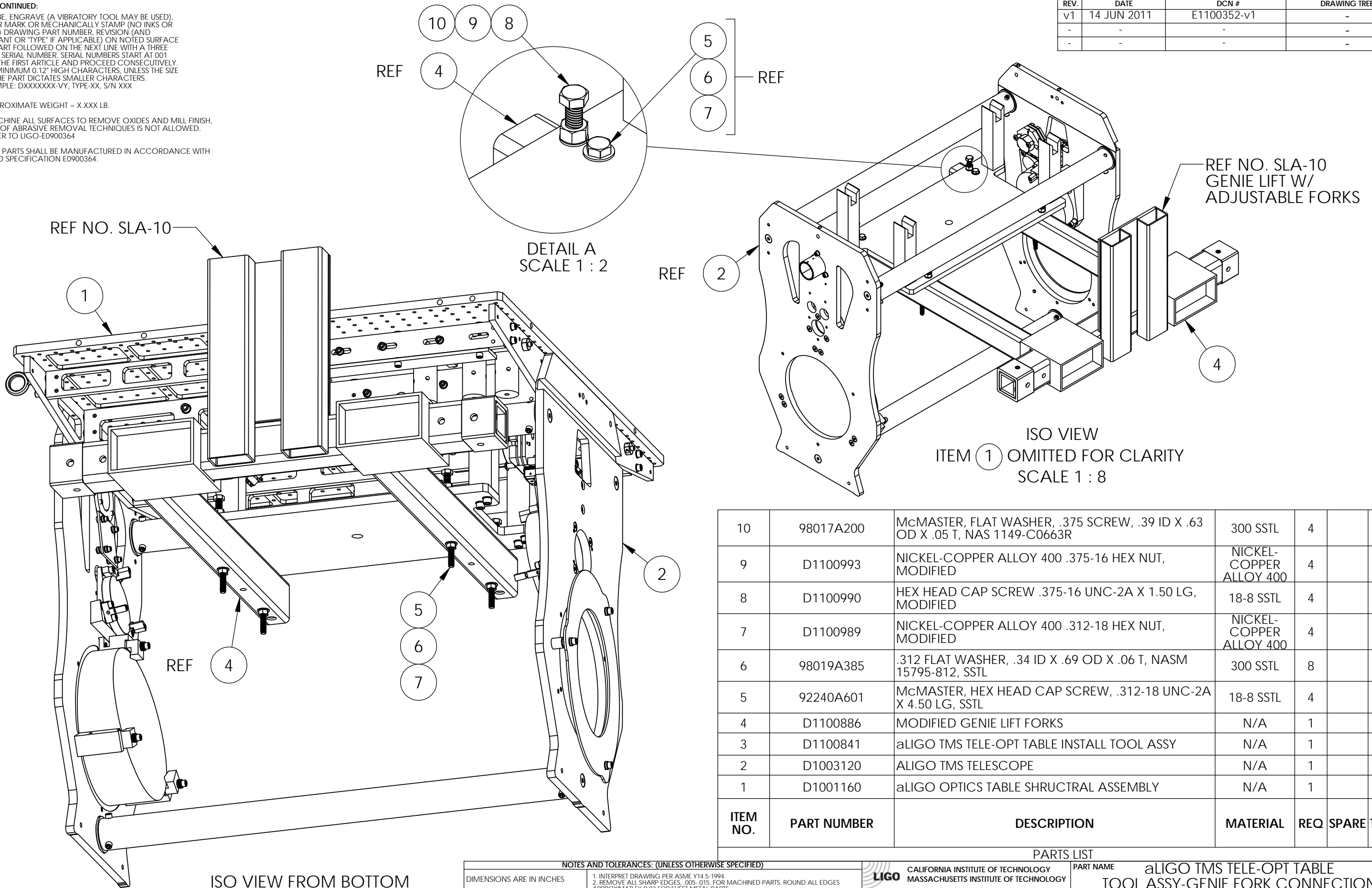


D1100908_aLIGO TMS TELE-OPT TABLE TOOL ASSY-GENIE FORK CONNECTION, PART PDM REV: X-006, DRAWING PDM REV: X-006

NOTES CONTINUED:
 5. SCRIBE, ENGRAVE (A VIBRATORY TOOL MAY BE USED), LASER MARK OR MECHANICALLY STAMP (NO INKS OR DYES) DRAWING PART NUMBER, REVISION (AND VARIANT OR "TYPE" IF APPLICABLE) ON NOTED SURFACE OF PART FOLLOWED ON THE NEXT LINE WITH A THREE DIGIT SERIAL NUMBER. SERIAL NUMBERS START AT 001 FOR THE FIRST ARTICLE AND PROCEED CONSECUTIVELY. USE MINIMUM 0.12" HIGH CHARACTERS, UNLESS THE SIZE OF THE PART DICTATES SMALLER CHARACTERS. EXAMPLE: DXXXXXX-VY, TYPE-XX, S/N XXX
 6. APPROXIMATE WEIGHT = X.XXX LB.
 7. MACHINE ALL SURFACES TO REMOVE OXIDES AND MILL FINISH. USE OF ABRASIVE REMOVAL TECHNIQUES IS NOT ALLOWED. REFER TO LIGO-E0900364
 8. ALL PARTS SHALL BE MANUFACTURED IN ACCORDANCE WITH LIGO SPECIFICATION E0900364.

REV.	DATE	DCN #	DRAWING TREE #
v1	14 JUN 2011	E1100352-v1	-
-	-	-	-
-	-	-	-



ITEM NO.	PART NUMBER	DESCRIPTION	MATERIAL	REQ	SPARE	TOTAL
10	98017A200	McMASTER, FLAT WASHER, .375 SCREW, .39 ID X .63 OD X .05 T, NAS 1149-C0663R	300 SSSL	4		4
9	D1100993	NICKEL-COPPER ALLOY 400 .375-16 HEX NUT, MODIFIED	NICKEL-COPPER ALLOY 400	4		4
8	D1100990	HEX HEAD CAP SCREW .375-16 UNC-2A X 1.50 LG, MODIFIED	18-8 SSSL	4		4
7	D1100989	NICKEL-COPPER ALLOY 400 .312-18 HEX NUT, MODIFIED	NICKEL-COPPER ALLOY 400	4		4
6	98019A385	.312 FLAT WASHER, .34 ID X .69 OD X .06 T, NASM 15795-812, SSSL	300 SSSL	8		8
5	92240A601	McMASTER, HEX HEAD CAP SCREW, .312-18 UNC-2A X 4.50 LG, SSSL	18-8 SSSL	4		4
4	D1100886	MODIFIED GENIE LIFT FORKS	N/A	1		1
3	D1100841	aLIGO TMS TELE-OPT TABLE INSTALL TOOL ASSY	N/A	1		1
2	D1003120	ALIGO TMS TELESCOPE	N/A	1		1
1	D1001160	aLIGO OPTICS TABLE SHRUCTRAL ASSEMBLY	N/A	1		1

ISO VIEW FROM BOTTOM
SCALE 3 : 16

NOTES AND TOLERANCES: (UNLESS OTHERWISE SPECIFIED)

DIMENSIONS ARE IN INCHES
 TOLERANCES:
 .XX ± .02
 .XXX ± .010
 ANGULAR ± 1.0°

1. INTERPRET DRAWING PER ASME Y14.5-1994.
 2. REMOVE ALL SHARP EDGES, .005-.015, FOR MACHINED PARTS. ROUND ALL EDGES APPROXIMATELY R.02 FOR SHEET METAL PARTS.
 3. DO NOT SCALE FROM DRAWINGS.
 4. ALL MACHINING FLUIDS MUST BE FULLY SYNTHETIC, FULLY WATER SOLUBLE AND FREE OF SULFUR, SILICONE, AND CHLORINE.

MATERIAL N/A **FINISH** N/A μinch

TOOLING

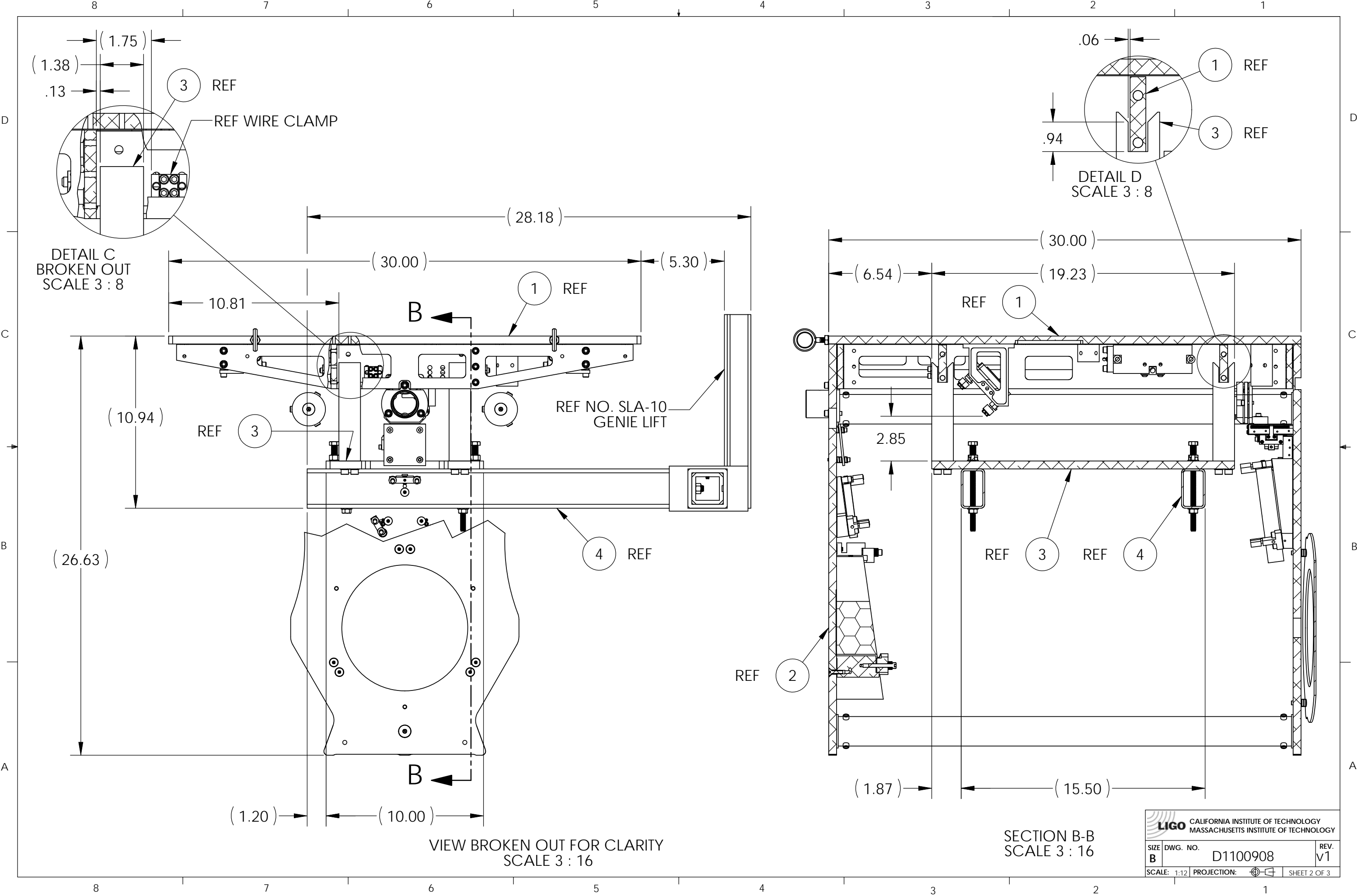
CALIFORNIA INSTITUTE OF TECHNOLOGY
MASSACHUSETTS INSTITUTE OF TECHNOLOGY


ADVANCED LIGO **AOS**

PART NAME aLIGO TMS TELE-OPT TABLE TOOL ASSY-GENIE FORK CONNECTION

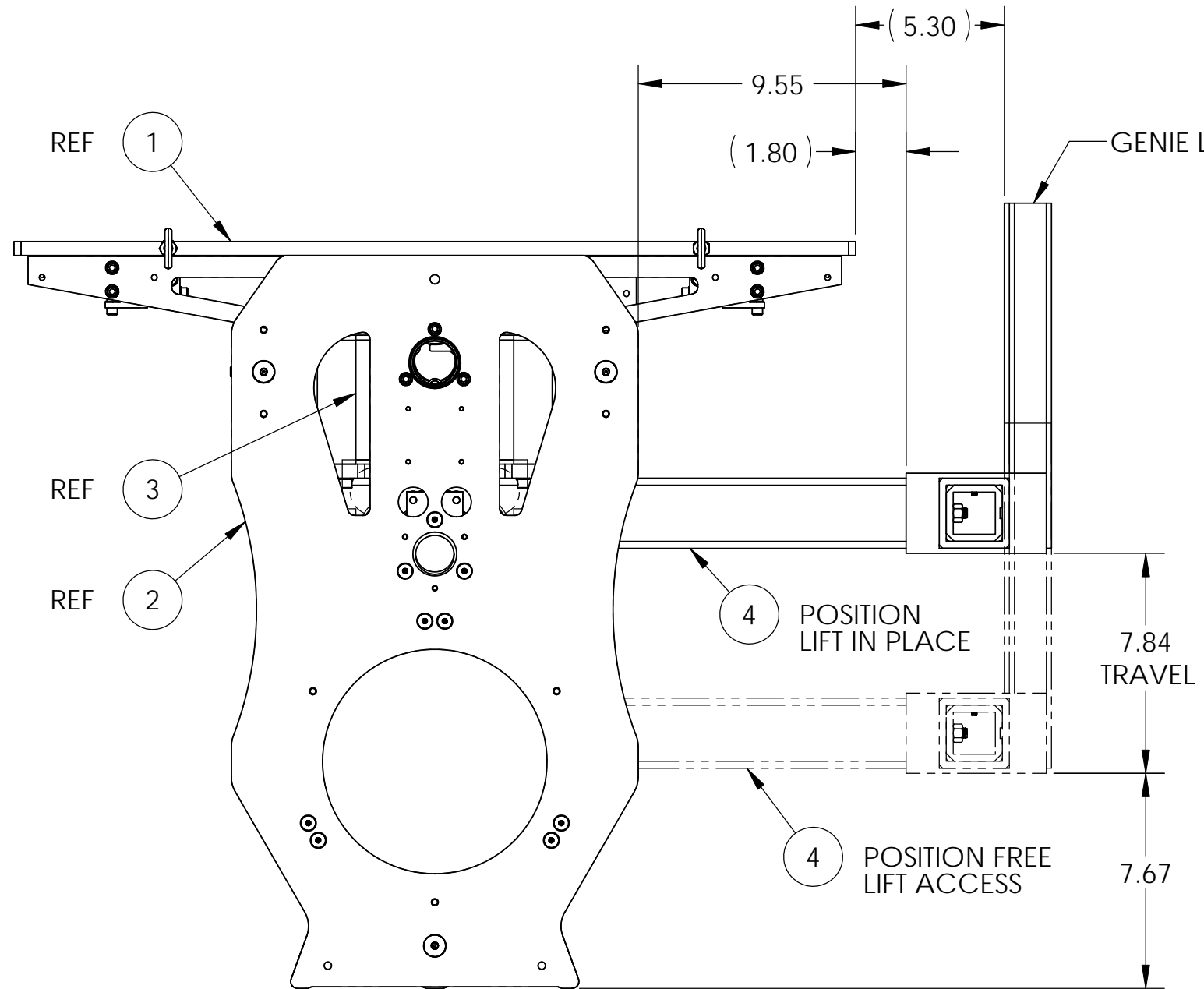
DESIGNER J. TERRAZAS 05 MAY 2011 **SIZE** DWG. NO. B **REV.** v1
DRAFTER J. TERRAZAS 16 MAY 2011 **D1100908**
CHECKER **APPROVAL** **SCALE:** 1:12 **PROJECTION:** **SHEET 1 OF 3**

D1100908_aLIGO TMS TELE-OPT TABLE ASSY-GENIE FORK CONNECTION, PART PDM REV: X-006, DRAWING PDM REV: X-006

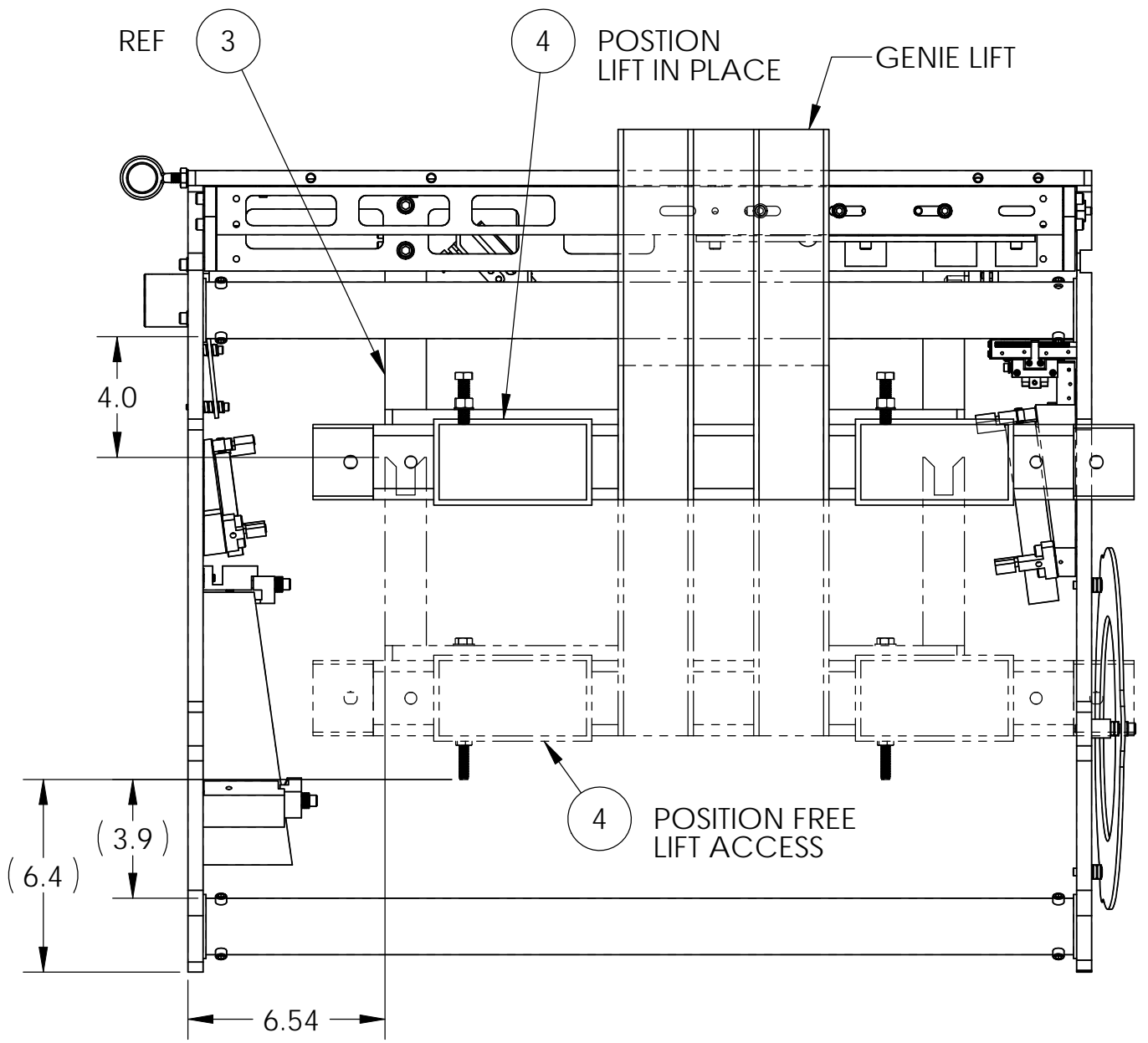


 CALIFORNIA INSTITUTE OF TECHNOLOGY MASSACHUSETTS INSTITUTE OF TECHNOLOGY		
SIZE	DWG. NO.	REV.
B	D1100908	V1
SCALE: 1:12	PROJECTION:	SHEET 2 OF 3

D1100908_aLIGO TMS TELE-OPT TABLE ASSY-GENIE FORK CONNECTION, PART PDM REV: X-006, DRAWING PDM REV: X-006



FRONT VIEW
 ITEMS (3) & (4) ACCESS TO (1) & (2)
 SCALE 3 : 16



SIDE VIEW
 ITEMS (3) & (4) ACCESS TO (1) & (2)
 SCALE 3 : 16

LIGO CALIFORNIA INSTITUTE OF TECHNOLOGY MASSACHUSETTS INSTITUTE OF TECHNOLOGY	
SIZE B	DWG. NO. D1100908
SCALE: 1:12	REV. v1
PROJECTION:	SHEET 3 OF 3