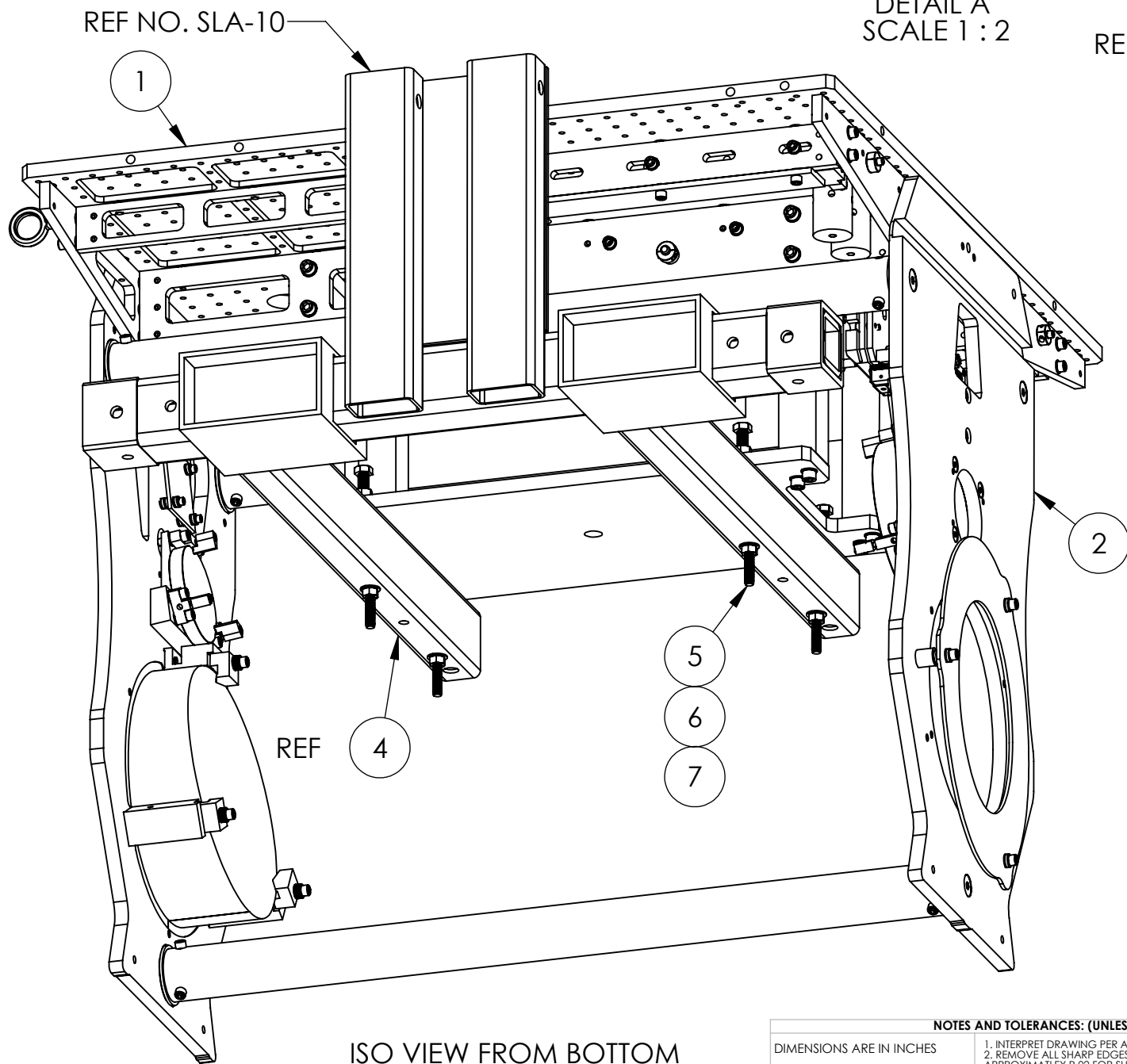
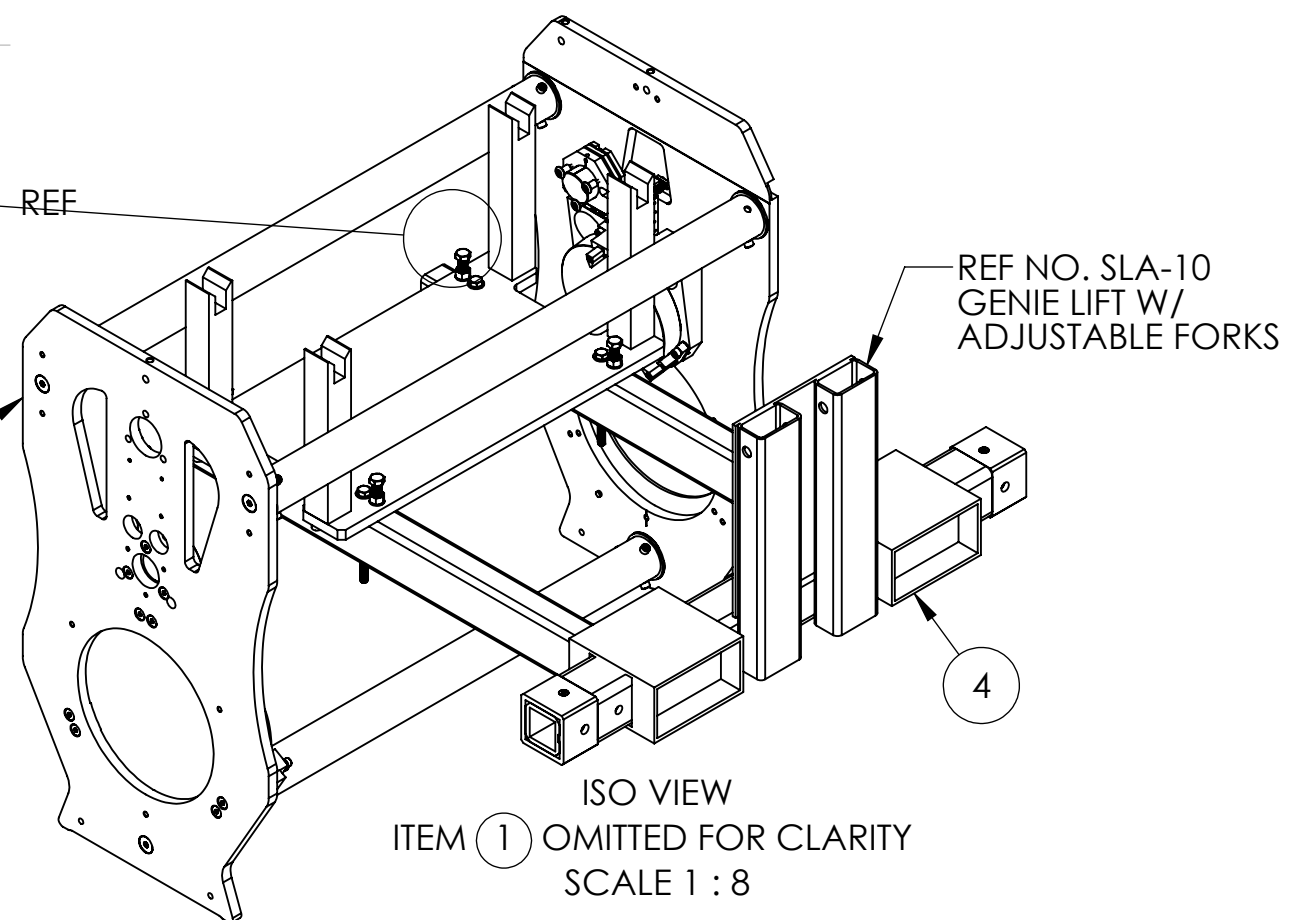
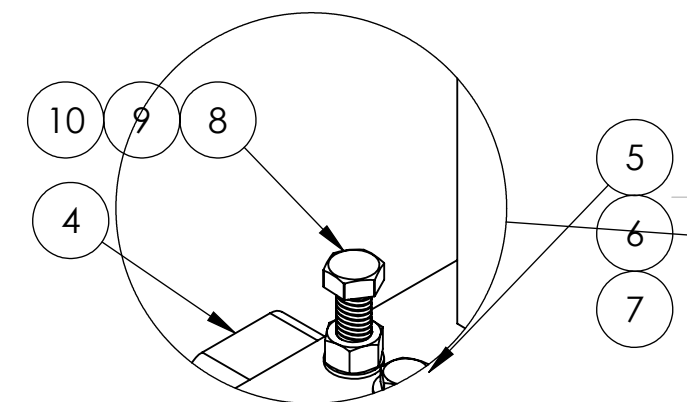


**NOTES CONTINUED:**  
 5. SCRIBE, ENGRAVE, OR MECHANICALLY STAMP (NO INKS OR DYES) DRAWING PART NUMBER, REVISION (AND VARIANT OR "TYPE" IF APPLICABLE) ON NOTED SURFACE OF PART FOLLOWED ON THE NEXT LINE WITH A THREE DIGIT SERIAL NUMBER. SERIAL NUMBERS START AT 001 FOR THE FIRST ARTICLE AND PROCEED CONSECUTIVELY. USE MINIMUM 0.12" HIGH CHARACTERS, UNLESS THE SIZE OF THE PART DICTATES SMALLER CHARACTERS. A VIBRATORY TOOL MAY BE USED.  
 EXAMPLE: DXXXXXX-VY, TYPE-XX, S/N XXX

6. APPROXIMATE WEIGHT = X.XXX LB.  
 7. MACHINE ALL SURFACES TO REMOVE OXIDES AND MILL FINISH. USE OF ABRASIVE REMOVAL TECHNIQUES IS NOT ALLOWED. REFER TO LIGO-E0900364  
 8. ALL PARTS SHALL BE MANUFACTURED IN ACCORDANCE WITH LIGO SPECIFICATION E0900364.

REV.	DATE	DCN #	DRAWING TREE #
v1	14 JUN 2011	E1100352-v1	-
-	-	-	-
-	-	-	-



ITEM NO.	PART NUMBER	DESCRIPTION	MATERIAL	REQ	SPARE	TOTAL
10	98017A200	FLAT WASHER, 3/8, (NAS 1149-C0663R OR EQUIV)	300 SSSL	4		4
9	D1100993	NICKEL-COPPER ALLOY 400 .375-16 HEX NUT, MODIFIED	NICKEL-COPPER ALLOY 400	4		4
8	D1100990	HEX HEAD CAP SCREW .375-16 UNC-2A X 1.50 LG, MODIFIED	18-8 SSSL	4		4
7	D1100989	NICKEL-COPPER ALLOY 400 .312-18 HEX NUT, MODIFIED	NICKEL-COPPER ALLOY 400	4		4
6	98019A385	.312 FLAT WASHER, .34 ID X .69 OD X .06 T, NASM 15795-812	300 SSSL	8		8
5	92240A601	MCMMASTER, HEX HEAD CAP SCREW, .312-18 UNC-2A X 4.50 LG, SSSL	18-8 SSSL	4		4
4	D1100886	MODIFIED GENIE LIFT FORKS	N/A	1		1
3	D1100841	αLIGO TMS TELE-OPT TABLE INSTALL TOOL ASSY	N/A	1		1
2	D1003120	αLIGO TMS TELESCOPE FRAME ASSEMBLY	N/A	1		1
1	D1001160	αLIGO OPTICS TABLE SHRUCTRAL ASSEMBLY	N/A	1		1

**NOTES AND TOLERANCES: (UNLESS OTHERWISE SPECIFIED)**  
 DIMENSIONS ARE IN INCHES  
 TOLERANCES:  
 .XX ± .02  
 .XXX ± .010  
 ANGULAR ± 1.0°  
 MATERIAL N/A  
 FINISH N/A μinch

**PARTS LIST**

**LIGO** CALIFORNIA INSTITUTE OF TECHNOLOGY MASSACHUSETTS INSTITUTE OF TECHNOLOGY

SYSTEM ADVANCED LIGO SUB-SYSTEM AOS

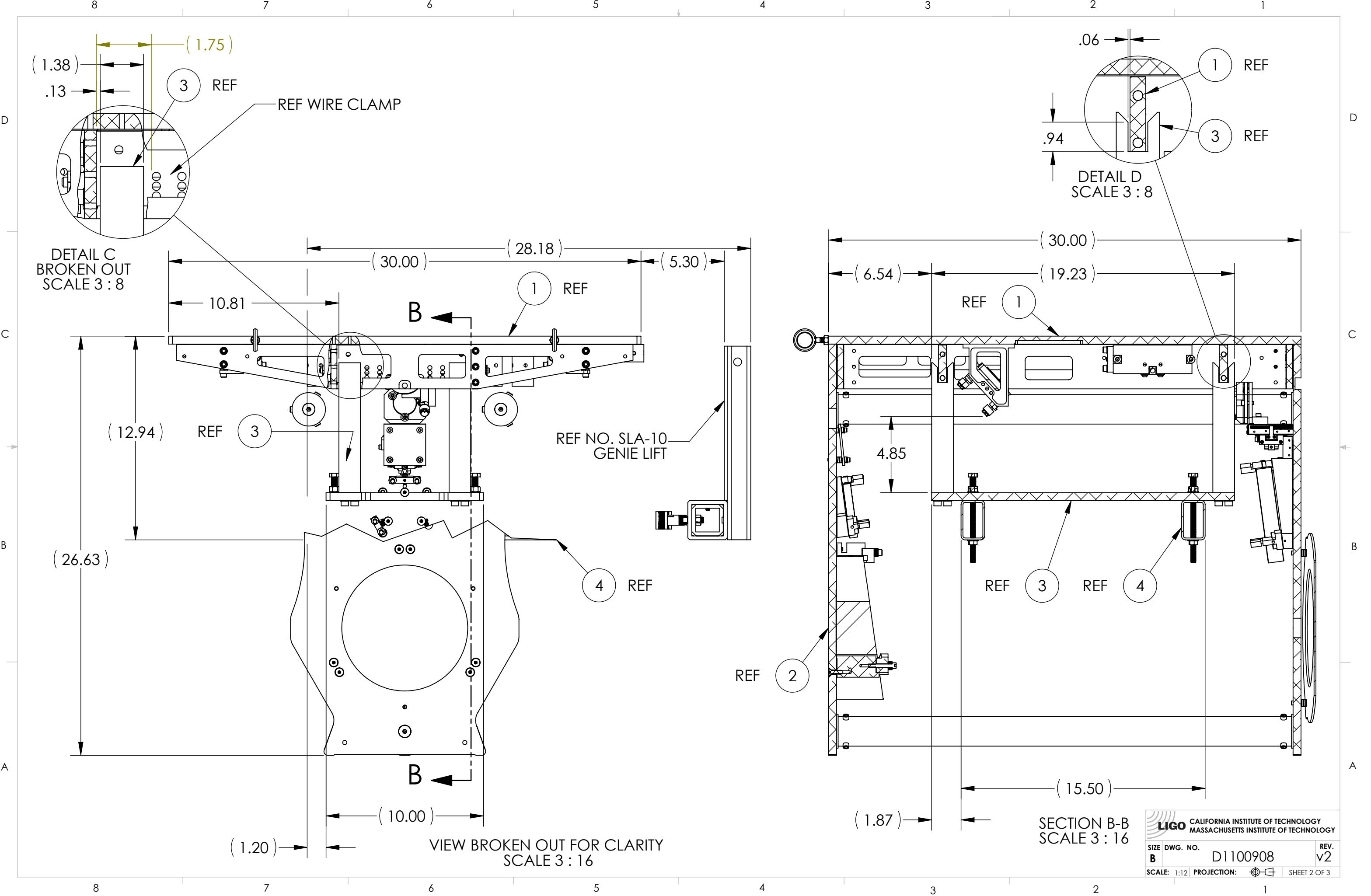
PART NAME αLIGO TMS TELE-OPT TABLE TOOL ASSY-GENIE FORK CONNECTION



DESIGNER J. TERRAZAS 05 MAY 2011 SIZE DWG. NO. B D1100908 REV. v2  
 DRAFTER J. TERRAZAS 16 MAY 2011  
 CHECKER  
 APPROVAL

SCALE: 1:12 PROJECTION: SHEET 1 OF 3

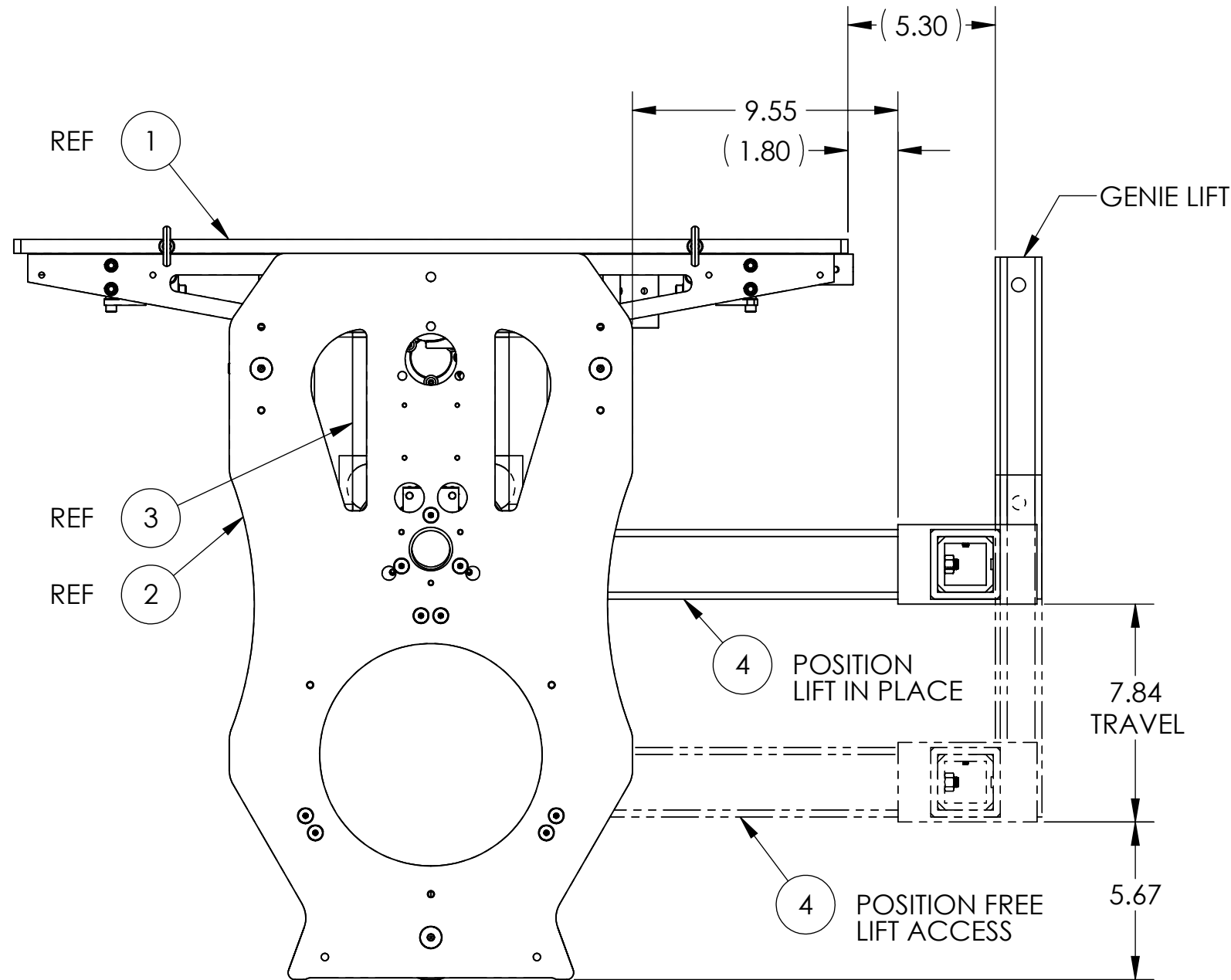
D1100908\_αLIGO TMS TELE-OPT TABLE TOOL ASSY-GENIE FORK CONNECTION, PART PDM REV: X-007, DRAWING PDM REV: X-007

D1100908\_TMS TELE-OPT TABLE TOOL ASSY-GENIE FORK CONNECTION, PART PDM REV: X-007, DRAWING PDM REV: X-007

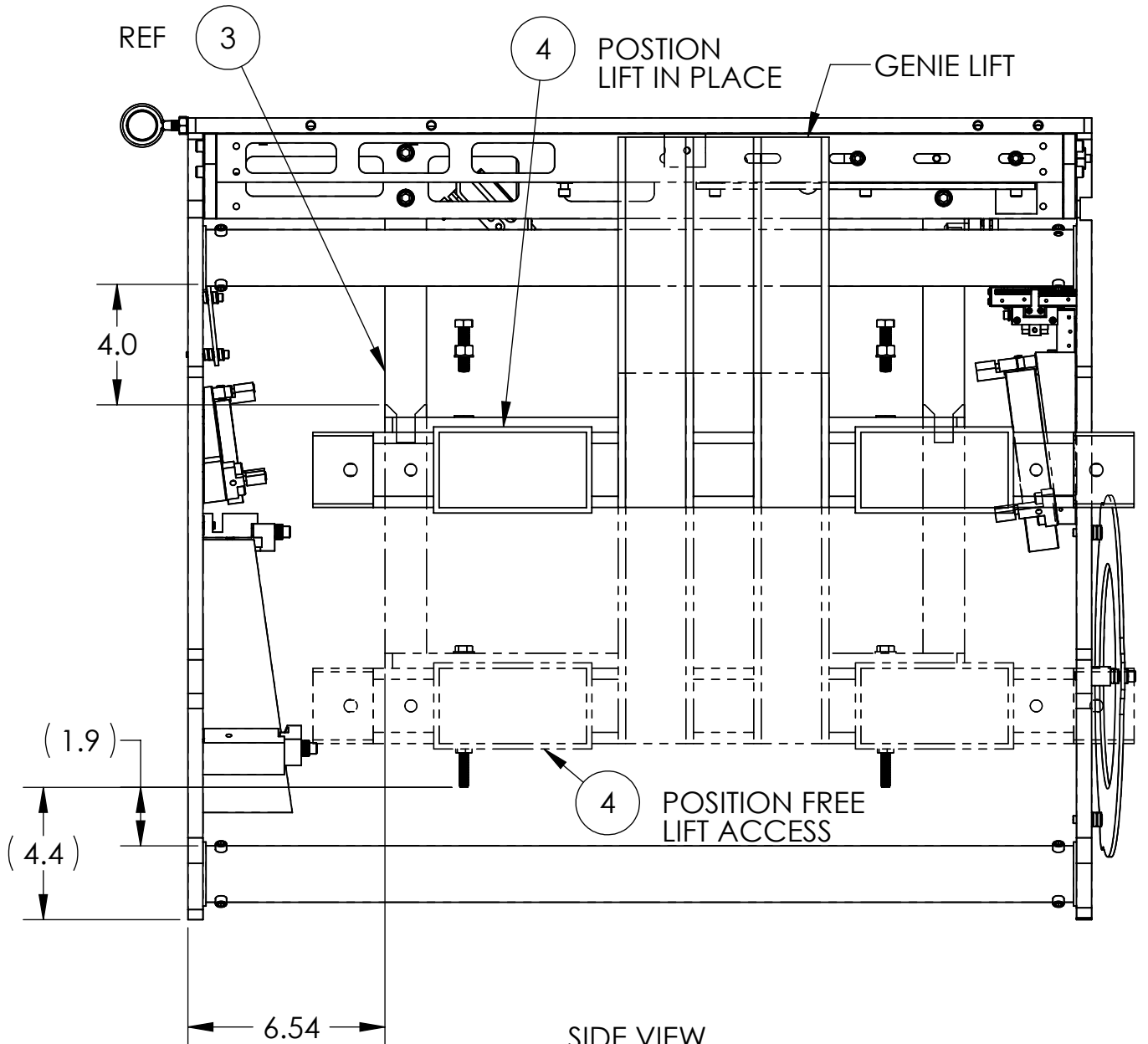


 CALIFORNIA INSTITUTE OF TECHNOLOGY  
 MASSACHUSETTS INSTITUTE OF TECHNOLOGY  
 SIZE DWG. NO. **B** D1100908 REV. v2  
 SCALE: 1:12 PROJECTION:  SHEET 2 OF 3

D1100908.qLIGO TMS TELE-OPT TABLE TOOL ASSY-GENIE FORK CONNECTION, PART PDM REV: X-007, DRAWING PDM REV: X-007



FRONT VIEW  
ITEMS (3) & (4) ACCESS TO (1) & (2)  
SCALE 3 : 16



SIDE VIEW  
ITEMS (3) & (4) ACCESS TO (1) & (2)  
SCALE 3 : 16

**LIGO** CALIFORNIA INSTITUTE OF TECHNOLOGY  
MASSACHUSETTS INSTITUTE OF TECHNOLOGY

SIZE	DWG. NO.	REV.
B	D1100908	v2
SCALE: 1:12 PROJECTION:		SHEET 3 OF 3