

D1101095_aLIGO TMS TELESCOPE-SUPPORT BRIDGE CONNECTION, PART PDM REV: X-003, DRAWING PDM REV: X-001

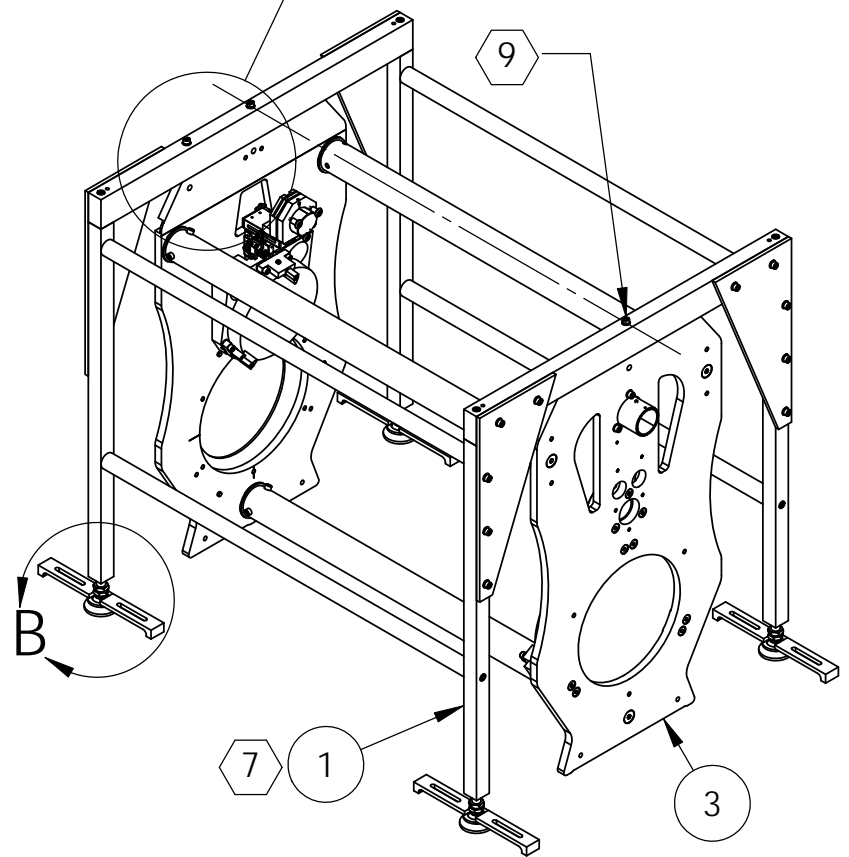
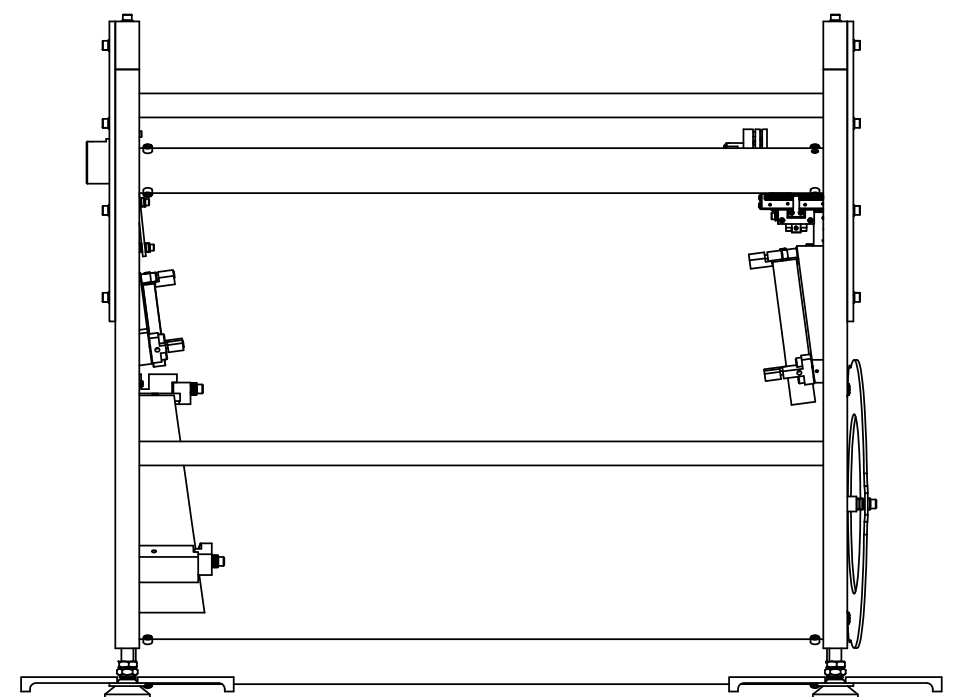
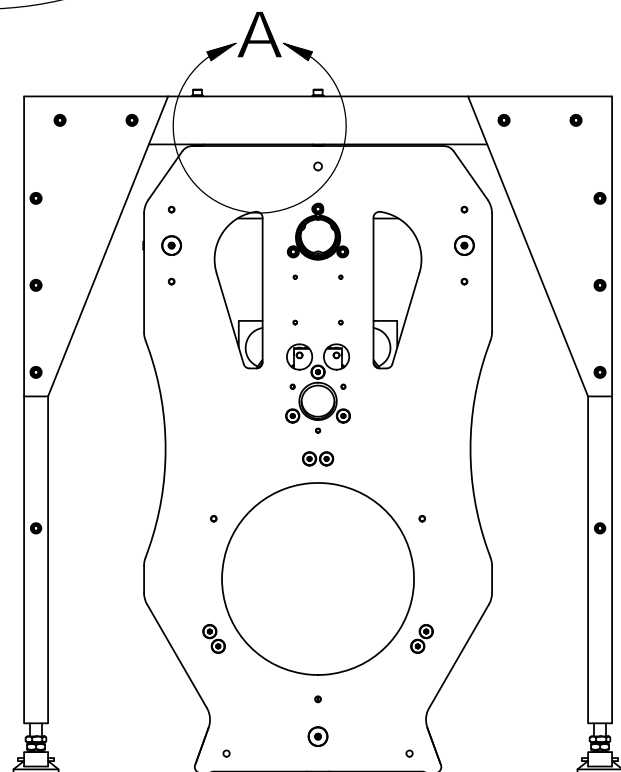
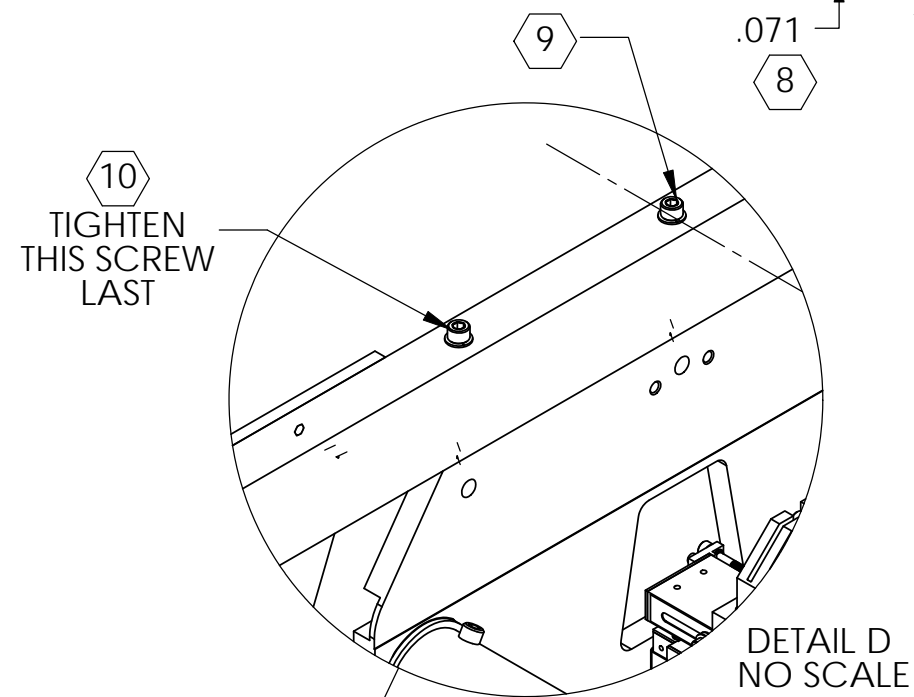
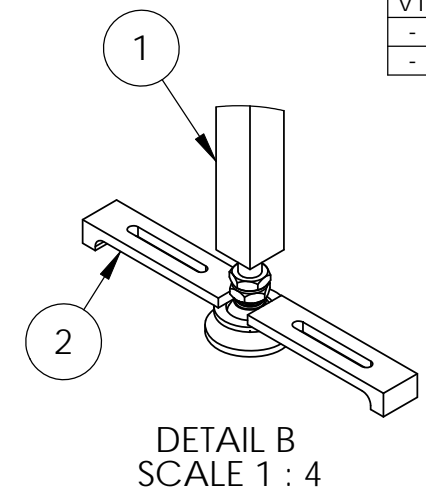
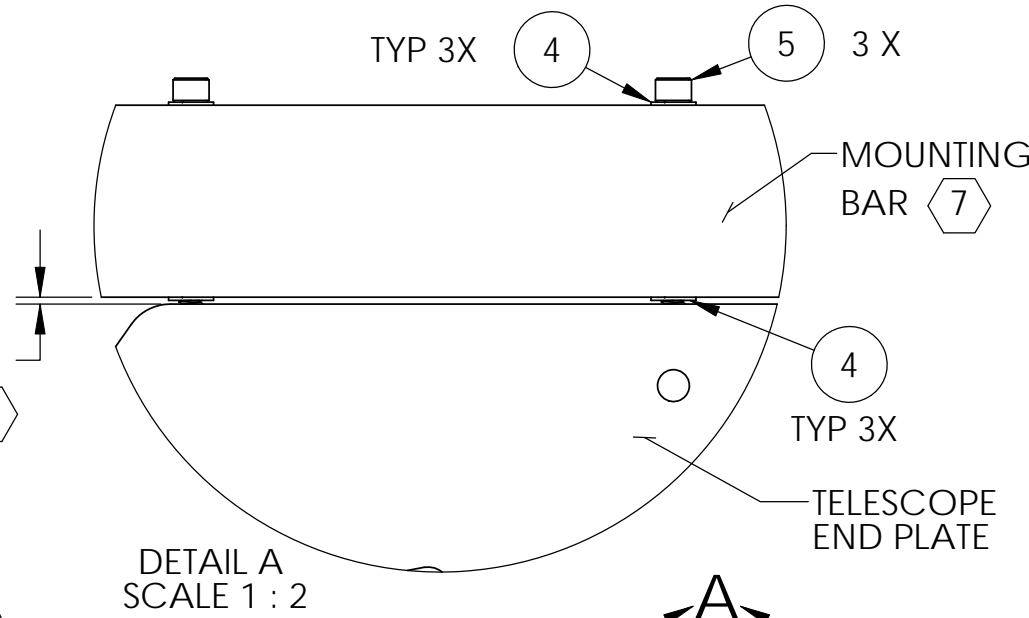
NOTES CONTINUED:
 5 BAG AND TAG PARTS WITH THEIR DRAWING PART NUMBER, REVISION, VARIANT OR "TYPE" (IF APPLICABLE), AND QUANTITY. IF PARTS ARE TOO SMALL TO SCRIBE, BAGGING AND TAGGING ALONE IS SUFFICIENT. EXAMPLE (TAG): DXXXXXX-VY, TYPE-XX, QTY: TBD

6. ALL PARTS SHALL BE MANUFACTURED IN ACCORDANCE WITH LIGO SPECIFICATION E0900364.
 7 SET BRIDGE UPSIDE DOWN ON A NEWPORT TABLE OR OTHER FLAT SURFACE BEFORE TIGHTENING SCREWS, TO ASSURE TELESCOPE MOUNTING BARS ARE PARALLEL.
 8 SET BRIDGE GAP TO .071", AND USE SCREWS ITEM 5 TO LIFT TELESCOPE.
 9 TORQUE TO 125 IN-LB.
 10 TORQUE TO 25 IN-LBS.

REV.	DATE	DCN #	DRAWING TREE #
v1	13 JUN 2011	E1100352-v1	-
-	-	-	-
-	-	-	-

D
C
B
A

D
C
B
A



ITEM NO.	PART NUMBER	DESCRIPTION	MATERIAL	REQ	SPARE	TOTAL
5	92196A552	(McM-Carr) .25-20-2.50L. S.H.C.S.	18-8 SSSL	3		3
4	96861A600	(McMASTER-CARR).25 VENTED WASHER, .255 ID X .468 OD X .031 THK	18-8 SSSL	6		6
3	D1003120	aLIGO TMS TELESCOPE	N/A	1		1
2		LOS DOG CLAMP	AISI 1020	8		8
1	D1100460	aLIGO TMS TELE ALIGNMENT SUPPORT BRIDGE ASSY	N/A	1		1

PARTS LIST

NOTES AND TOLERANCES: (UNLESS OTHERWISE SPECIFIED)

DIMENSIONS ARE IN INCHES

TOLERANCES:
 .XX ± .02
 .XXX ± .010
 ANGULAR ± 1.0°

MATERIAL	N/A	FINISH	N/A μinch
----------	-----	--------	-----------

CALIFORNIA INSTITUTE OF TECHNOLOGY MASSACHUSETTS INSTITUTE OF TECHNOLOGY		PART NAME aLIGO TMS TELESCOPE-SUPPORT BRIDGE CONNECTION	
SYSTEM ADVANCED LIGO	SUB-SYSTEM AOS	DESIGNER J. TERRAZAS 13 JUN 2011	SIZE DWG. NO. B D1101095
DRAFTER J. TERRAZAS 20 JUL 2011	CHECKER APPROVAL	REV. v1	SCALE: 1:12 PROJECTION: SHEET 1 OF 1

8 7 6 5 4 3 2 1