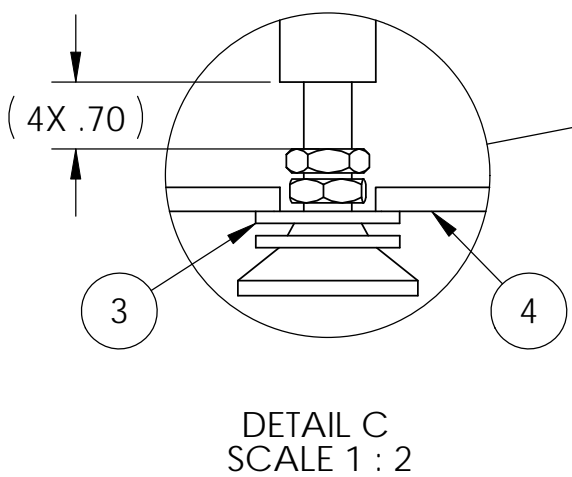
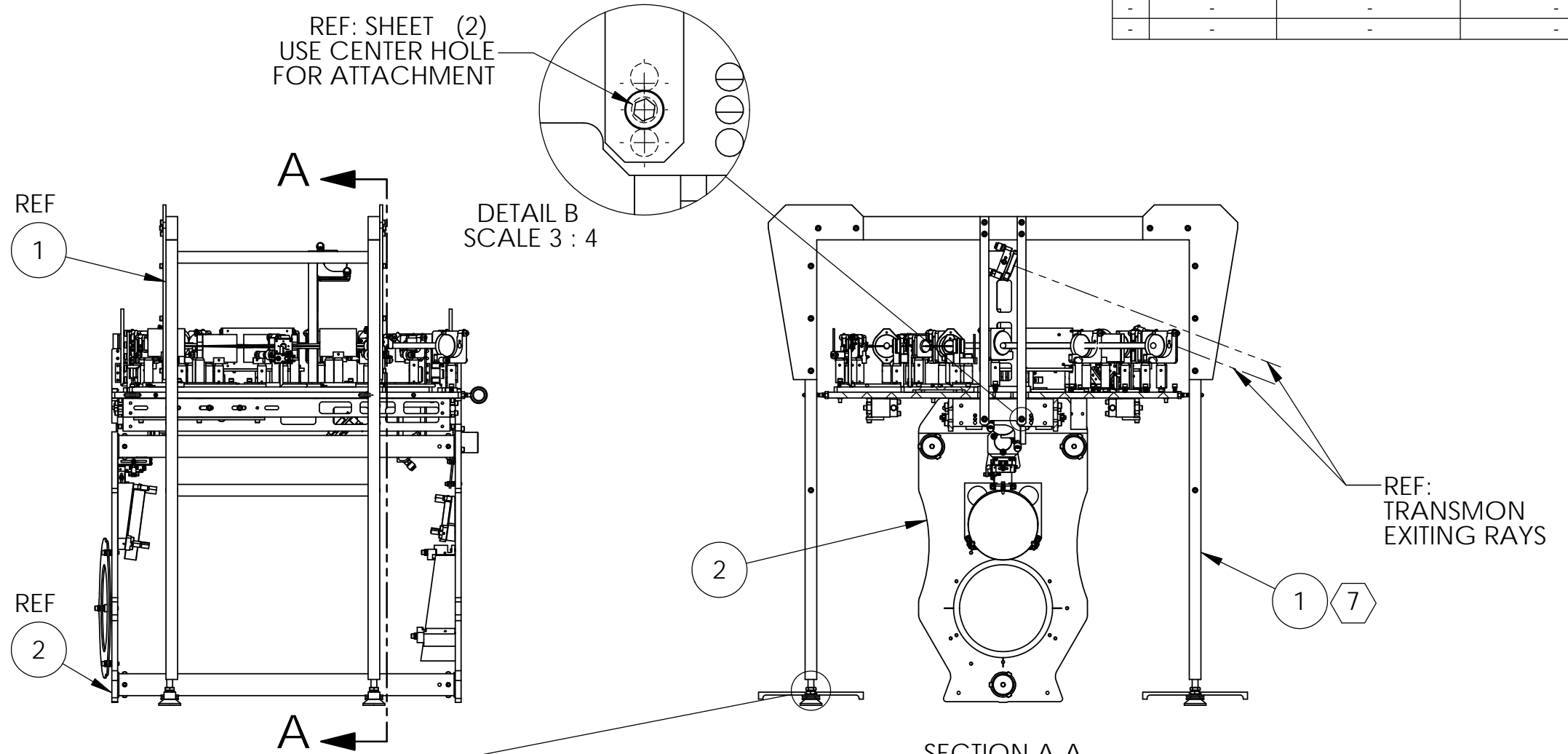


D1101096_aLIGO TMS OPT TABLE-TELE-SUPPORT BRIDGE CONNECTION, PART PDM REV: X-011, DRAWING PDM REV: X-008

NOTES CONTINUED:

- 5. APPROXIMATE WEIGHT = N/A
- 6. NO REPAIRS SHALL BE MADE UNLESS APPROVED IN ADVANCE, AND IN WRITING, BY LIGO LABORATORY. IN GENERAL WELD REPAIRS AND PRESS FIT INSERT REPAIRS ARE NEVER ACCEPTABLE. THE MATERIAL SHOULD BE MADE WITH VIRGIN MATERIAL. SPECIAL CIRCUMSTANCES CAN BE REVIEWED IF / WHEN BROUGHT TO THE ATTENTION OF LIGO CONTRACTING OFFICER'S REPRESENTATIVE (COTR) THROUGH A MATERIAL REVIEW BOARD (MRB) PROCESS, REFER TO LIGO-E0900364.
- 7. SET BRIDGE, ITEM 1 HEIGHT AS NECESSARY TO INSTALL STRAPS AS SHOWN BY ADJUSTING THE 1/2-20 PITCH LEVELING MOUNT, TAKE CARE TO BE PARALLEL WITH TABLE TOP AND LEVEL.

REV.	DATE	DCN #	DRAWING TREE #
v1	09 JUN 2011	E1100355-v1	-
-	-	-	-
-	-	-	-

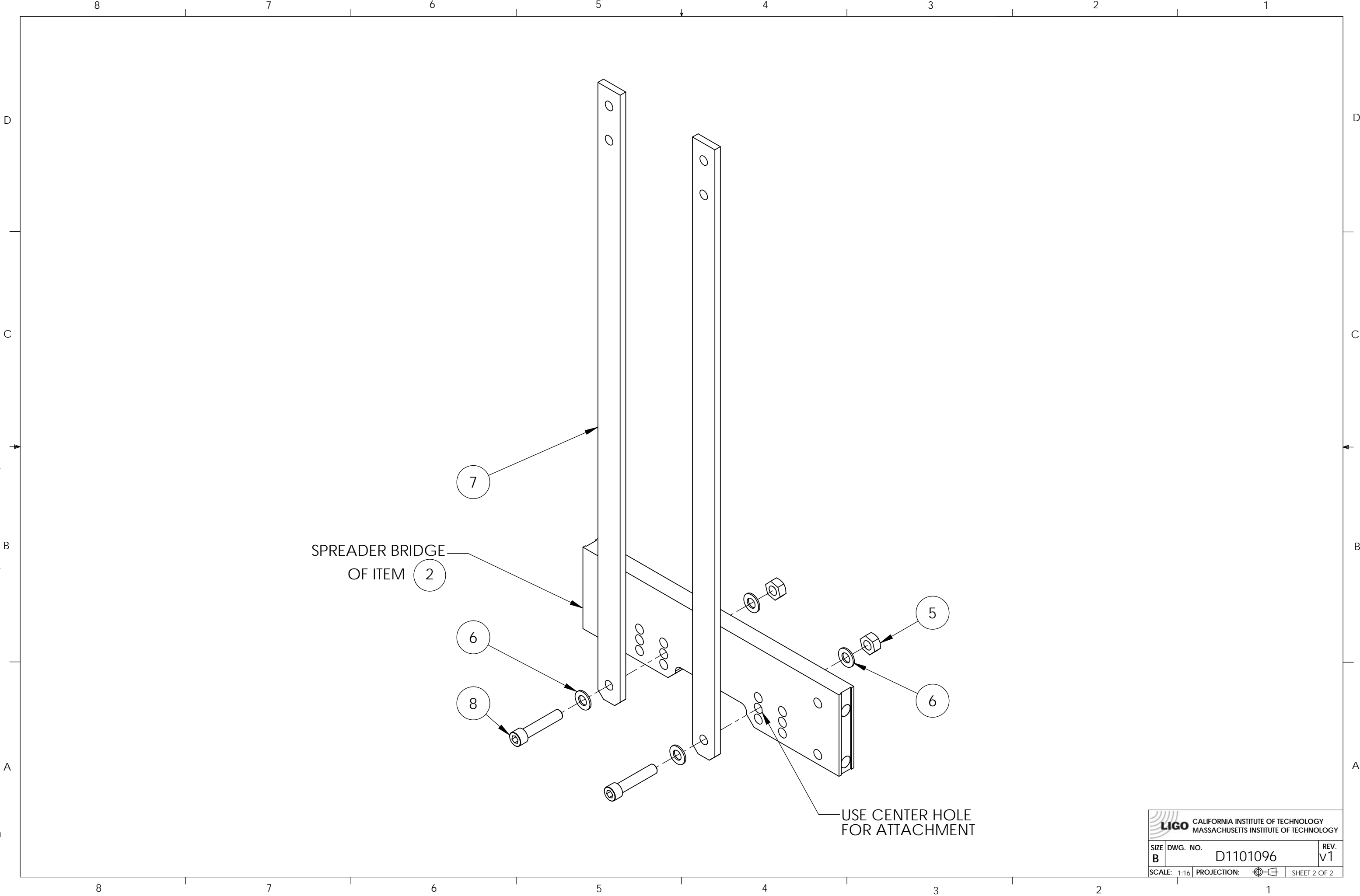


ITEM NO.	PART NUMBER	DESCRIPTION	MATERIAL	REQ	SPARE	TOTAL
8	92196A544	McMASTER, SOCKET HEAD CAP SCREW, 1/4-20 X 1.25 LG, SSTL	18-8 SSTL	6	2	8
7	D1100541	aLIGO TMS OPTICAL TABLE BRIDGE VERTICAL SUPPORT BAR	304 SSTL	2	0	2
6	90313A203	McMASTER, .266 I.D. X .50 O.D FLAT WASHER	18-8 SSTL	12	2	14
5	D1101269	NICKEL-COPPER ALLOY 400 .250-20 HEX NUT, MODIFIED	NICKEL-COPPER ALLOY 400	6	2	8
4		LOS DOG CLAMP	AISI 1020	8	0	8
3	98126A849	(McMASTER-CARR), WASHER, 1" ID X 1.5 OD X .12 T	18-8 SSTL	4	1	5
2	D1002460-02	aLIGO TMS TELESCOPE ASSEMBLY, Y-ARM	N/A	1	0	1
1	D1100531	aLIGO TMS OPTICAL TABLE SUPPORT BRIDGE ASSY	N/A	1	0	1

PARTS LIST

<p>NOTES AND TOLERANCES: (UNLESS OTHERWISE SPECIFIED)</p> <p>1. INTERPRET DRAWING PER ASME Y14.5-1994. 2. REMOVE ALL SHARP EDGES, R.02 MIN. 3. DO NOT SCALE FROM DRAWING. 4. ALL MACHINING FLUIDS MUST BE FULLY SYNTHETIC, FULLY WATER SOLUBLE AND FREE OF SULFUR, SILICONE, AND CHLORINE.</p>		<p>LIGO CALIFORNIA INSTITUTE OF TECHNOLOGY MASSACHUSETTS INSTITUTE OF TECHNOLOGY</p>		<p>PART NAME aLIGO TMS OPT TABLE TELE SUPPORT BRIDGE CONNECTION</p>	
<p>DIMENSIONS ARE IN INCHES</p> <p>TOLERANCES: .XX ± .01 .XXX ± .005</p> <p>ANGULAR ± 1.0°</p>	<p>MATERIAL N/A</p>	<p>FINISH N/A μinch</p>	<p>SYSTEM ADVANCED LIGO</p>	<p>SUB-SYSTEM AOS</p>	<p>DESIGNER J. TERRAZAS 24 MAR 2011</p> <p>DRAFTER J. TERRAZAS 22 JUN 2011</p> <p>CHECKER</p> <p>APPROVAL</p>
<p>SCALE: 1:12 PROJECTION: </p>			<p>SIZE DWG. NO. B D1101096</p>		<p>REV. v1</p>
<p>SHEET 1 OF 2</p>					

D1101096_aLIGO TMS OPT TABLE-TELE-SUPPORT BRIDGE CONNECTION, PART PDM REV: X-011, DRAWING PDM REV: X-008



SPREADER BRIDGE
OF ITEM (2)

(7)



(6)

(8)

(5)

(6)

USE CENTER HOLE
FOR ATTACHMENT

 CALIFORNIA INSTITUTE OF TECHNOLOGY MASSACHUSETTS INSTITUTE OF TECHNOLOGY	
SIZE B	DWG. NO. D1101096
SCALE: 1:16	PROJECTION:  SHEET 2 OF 2
REV. V1	