

D1101162 aLIGO TMS Telescope SUS Clamp Assembly, PART PDM REV: X-020, DRAWING PDM REV: X-002

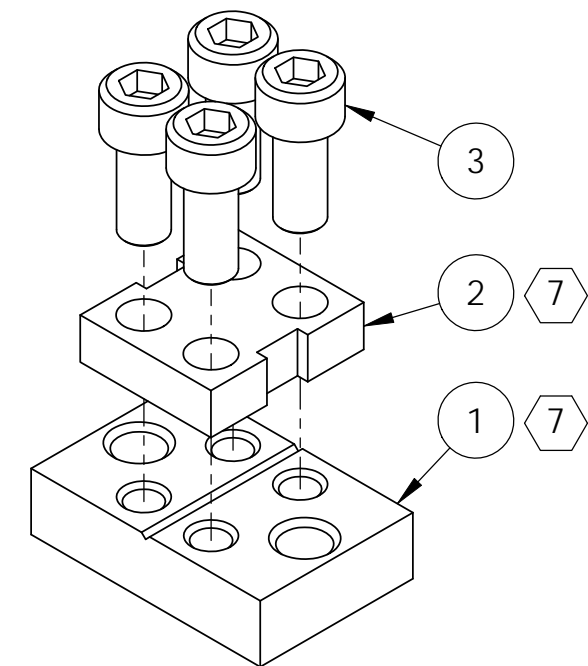
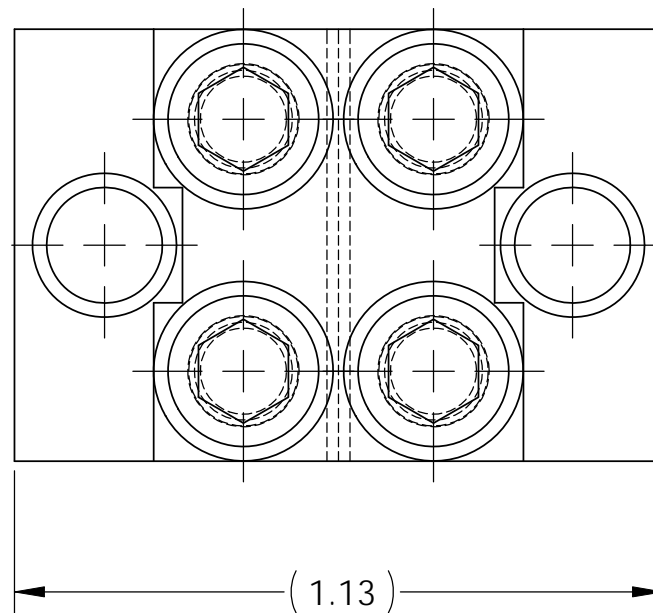
NOTES CONTINUED:

5. BAG AND TAG LOT WITH DRAWING NUMBER, REVISION, QUANTITY, AND LOT SERIAL NUMBER. LOT SERIAL NUMBERS START AT 001 AND PROCEED CONSECUTIVELY. EXAMPLE (TAG): DXXXXXX-VY, QTY: X, LOT S/N 001.

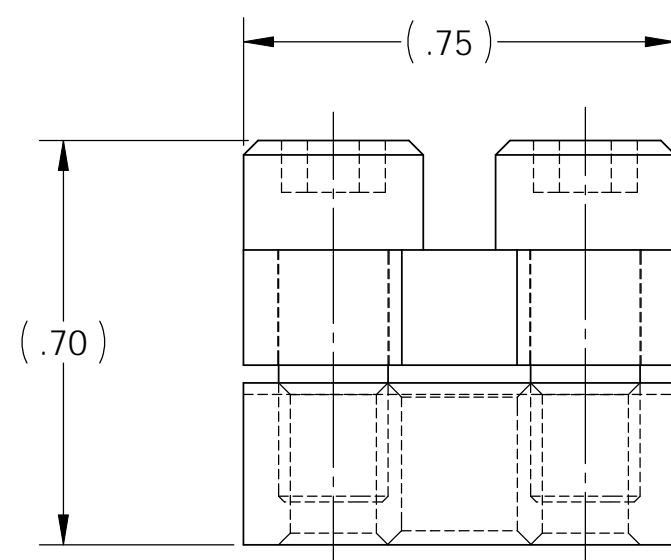
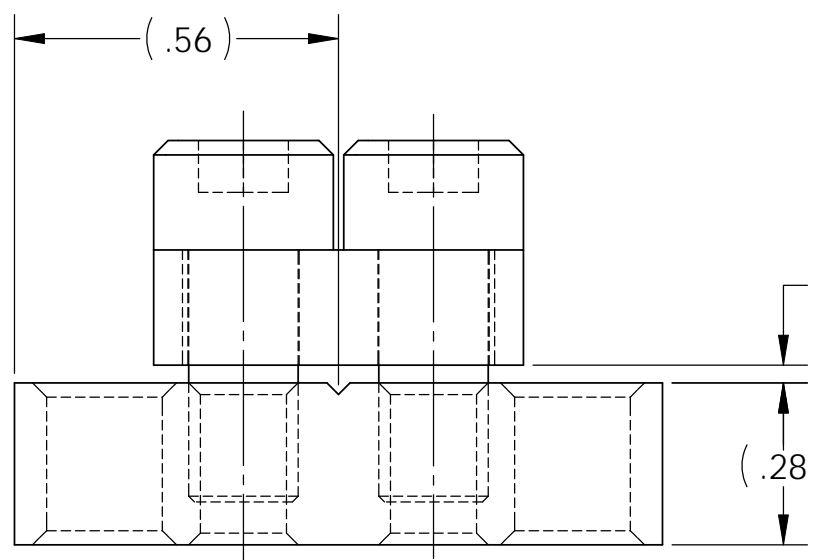
6. APPROXIMATE WEIGHT = 0.106 LBS.

⑦ SMOOTH SURFACE OF ITEM 2 TO FACE TOWARD GROOVED SURFACE OF ITEM 1

REV.	DATE	DCN #	BOM #
v1	22 JUN 2011	E1100351	E1100626
-	-	-	-
-	-	-	-



**EXPLODED**



ITEM NO.	PART NUMBER	DESCRIPTION	MATERIAL	REQ	SPARE	TOTAL
3	C-2407-NA	UC COMP, SOCKET HEAD CAP SCREW, #10-24 X .438 LG, (OR EQUIV)	Ag-PLATED 300 SSSL	4	2	6
2	D1002239	aLIGO TMS TELESCOPE WIRE CLAMP JAW	304 SSSL	1	0	1
1	D1002240	aLIGO TMS TELESCOPE WIRE CLAMP BASE	304 SSSL	1	0	1

**PARTS LIST**

<p><b>NOTES AND TOLERANCES: (UNLESS OTHERWISE SPECIFIED)</b></p> <p>DIMENSIONS ARE IN INCHES</p> <p>TOLERANCES: .XX ± .02 .XXX ± .010</p> <p>ANGULAR ± 1.0°</p>		<p>1. INTERPRET DRAWING PER ASME Y14.5-1994. 2. REMOVE ALL SHARP EDGES, .005-.015, FOR MACHINED PARTS. ROUND ALL EDGES APPROXIMATELY R.02 FOR SHEET METAL PARTS. 3. DO NOT SCALE FROM DRAWINGS. 4. ALL MACHINING FLUIDS MUST BE FULLY SYNTHETIC, FULLY WATER SOLUBLE AND FREE OF SULFUR, SILICONE, AND CHLORINE.</p>		<p><b>LIGO</b> CALIFORNIA INSTITUTE OF TECHNOLOGY MASSACHUSETTS INSTITUTE OF TECHNOLOGY</p>		<p>PART NAME <b>aLIGO TMS TELESCOPE SUS CLAMP ASSEMBLY</b></p>	
<p>MATERIAL N/A</p>		<p>FINISH N/A μinch</p>		<p>SYSTEM <b>ADVANCED LIGO</b></p>		<p>SUB-SYSTEM <b>AOS</b></p>	
<p>NEXT ASSY D1101163</p>		<p>DESIGNER K. Malland</p>		<p>18 AUG 2010</p>		<p>SIZE DWG. NO. <b>B D1101162</b></p>	
		<p>DRAFTER J. TERRAZAS</p>		<p>22 JUN 2011</p>		<p>REV. v1</p>	
		<p>CHECKER</p>				<p>SCALE: 2:1 PROJECTION:  SHEET 1 OF 1</p>	
		<p>APPROVAL</p>					