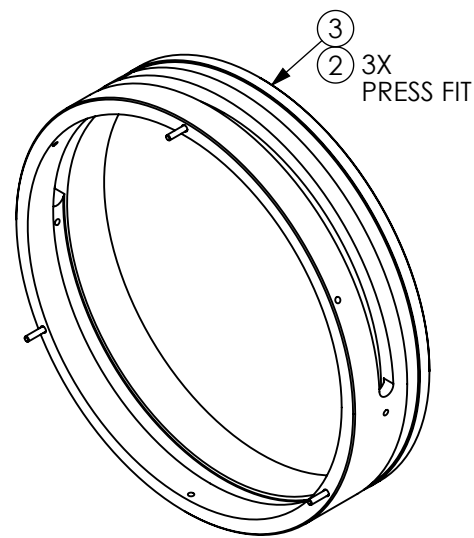
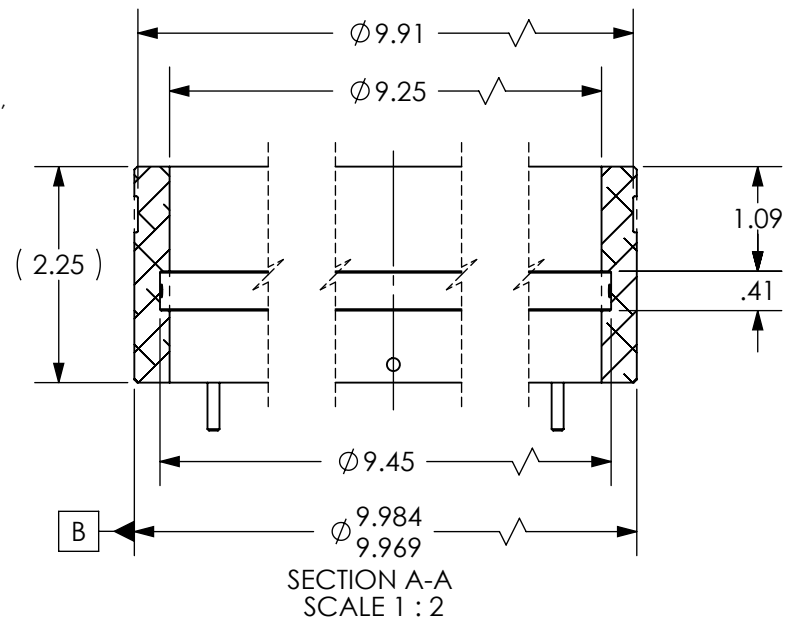


D1101170\_d1lgo\_ve, VIEWPORT GUARD ASSY., EXTENSION, PART PDM REV: X-013, DRAWING PDM REV: X-018

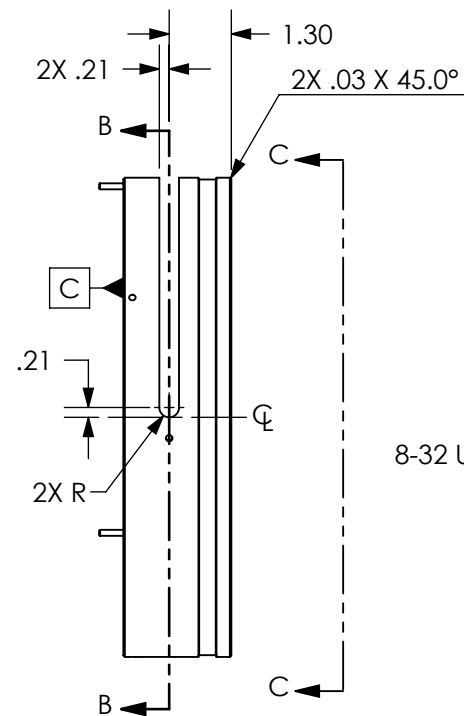
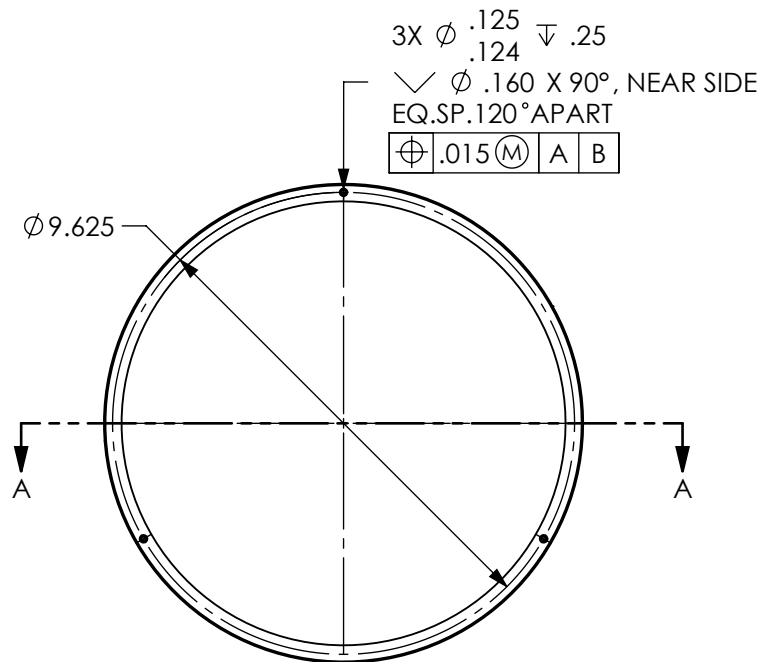
**NOTES CONTINUED:**

④ SCRIBE, ENGRAVE (A VIBRATORY TOOL MAY BE USED), LASER MARK OR MECHANICALLY STAMP (NO INKS OR DYES) DRAWING PART NUMBER, REVISION ON NOTED SURFACE OF PART FOLLOWED ON THE NEXT LINE WITH A THREE DIGIT SERIAL NUMBER. SERIAL NUMBERS START AT 001 FOR THE FIRST ARTICLE AND PROCEED CONSECUTIVELY. USE MINIMUM 0.12" HIGH CHARACTERS, UNLESS THE SIZE OF THE PART DICTATES SMALLER CHARACTERS. EXAMPLE: D1101170-v1, S/N 001

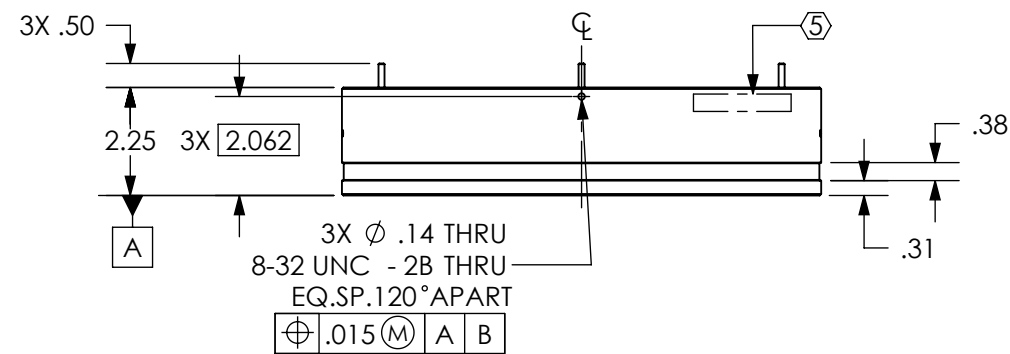
REV.	DATE	DCN #	DRAWING TREE #
v1	20 JUN 2011	E1100531-x0	-
v2	23 NOV 2011	E1101124-x0	-
v3	28 NOV 2011	E1101128-x0	-
v4	27 JUN 2013	-	-



ISO VIEW



SECTION B-B



ITEM NO.	PART NUMBER	DESCRIPTION	MATERIAL	REQ
2	97395A451	PIN, DOWEL, .13 DIA. X .75 LG.	316 SSTL	3
3	D1101170	VIEWPORT GUARD ASSY., EXTENSION	6061-T6	1

**PARTS LIST**

**NOTES AND TOLERANCES: (UNLESS OTHERWISE SPECIFIED)**

DIMENSIONS ARE IN INCHES

TOLERANCES:  
 .XX ± .01  
 .XXX ± .005  
 ANGULAR ± 0.5°

1. INTERPRET DRAWING PER ASME Y14.5-1994.  
 2. BREAK ALL SHARP EDGES, .02 MAX.  
 3. DO NOT SCALE FROM DRAWING.  
 4. CLEAR ANODIZE PER MIL-A-8625, TYPE II

MATERIAL: N/A  
 FINISH: 63 μinch

**LIGO** CALIFORNIA INSTITUTE OF TECHNOLOGY  
 MASSACHUSETTS INSTITUTE OF TECHNOLOGY

SYSTEM: ADVANCED LIGO  
 SUB-SYSTEM: VE  
 NEXT ASSY: D1101171

PART NAME: VIEWPORT GUARD ASSY., EXTENSION

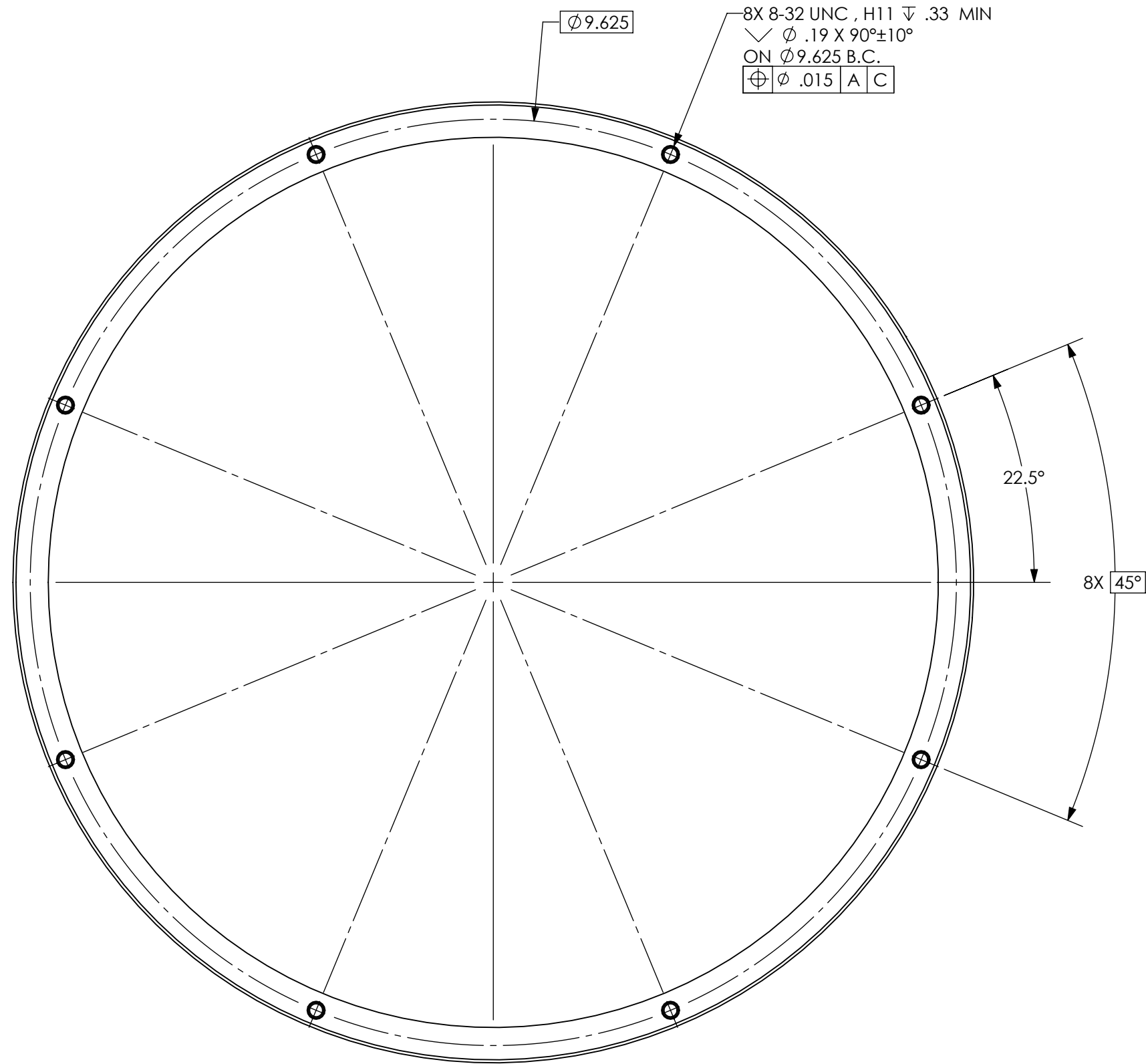
DESIGNER: E.SANCHEZ  
 DRAFTER: E.SANCHEZ  
 CHECKER:  
 APPROVAL:

DATE: 20 JUN 2011  
 DATE: 20 JUN 2011


SIZE: B  
 DWG. NO.: D1101170  
 REV.: v4

SCALE: 1:4  
 PROJECTION: SHEET 1 OF 2

D1101170\_dLIGO, VE, VIEWPORT GUARD ASSY., EXTENSION, PART PDM REV: X-013, DRAWING PDM REV: X-018



VIEW C-C

 CALIFORNIA INSTITUTE OF TECHNOLOGY  
 MASSACHUSETTS INSTITUTE OF TECHNOLOGY

SIZE	DWG. NO.	REV.
B	D1101170	v4
SCALE: 3:4	PROJECTION:	SHEET 2 OF 2