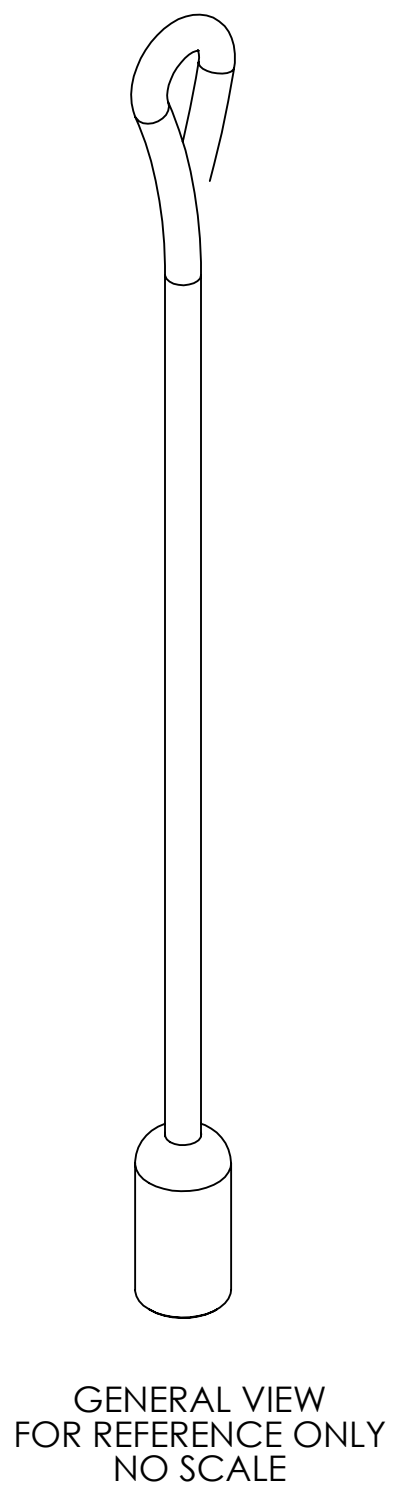
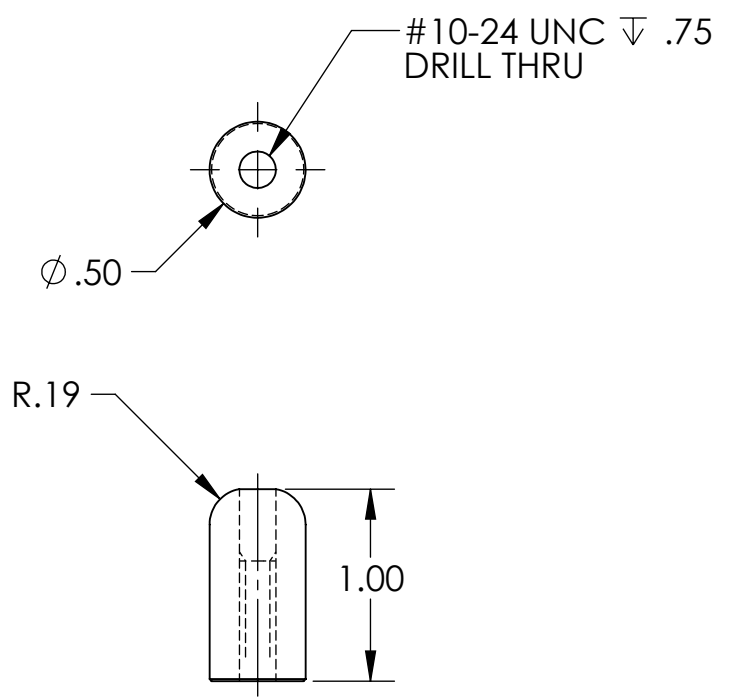
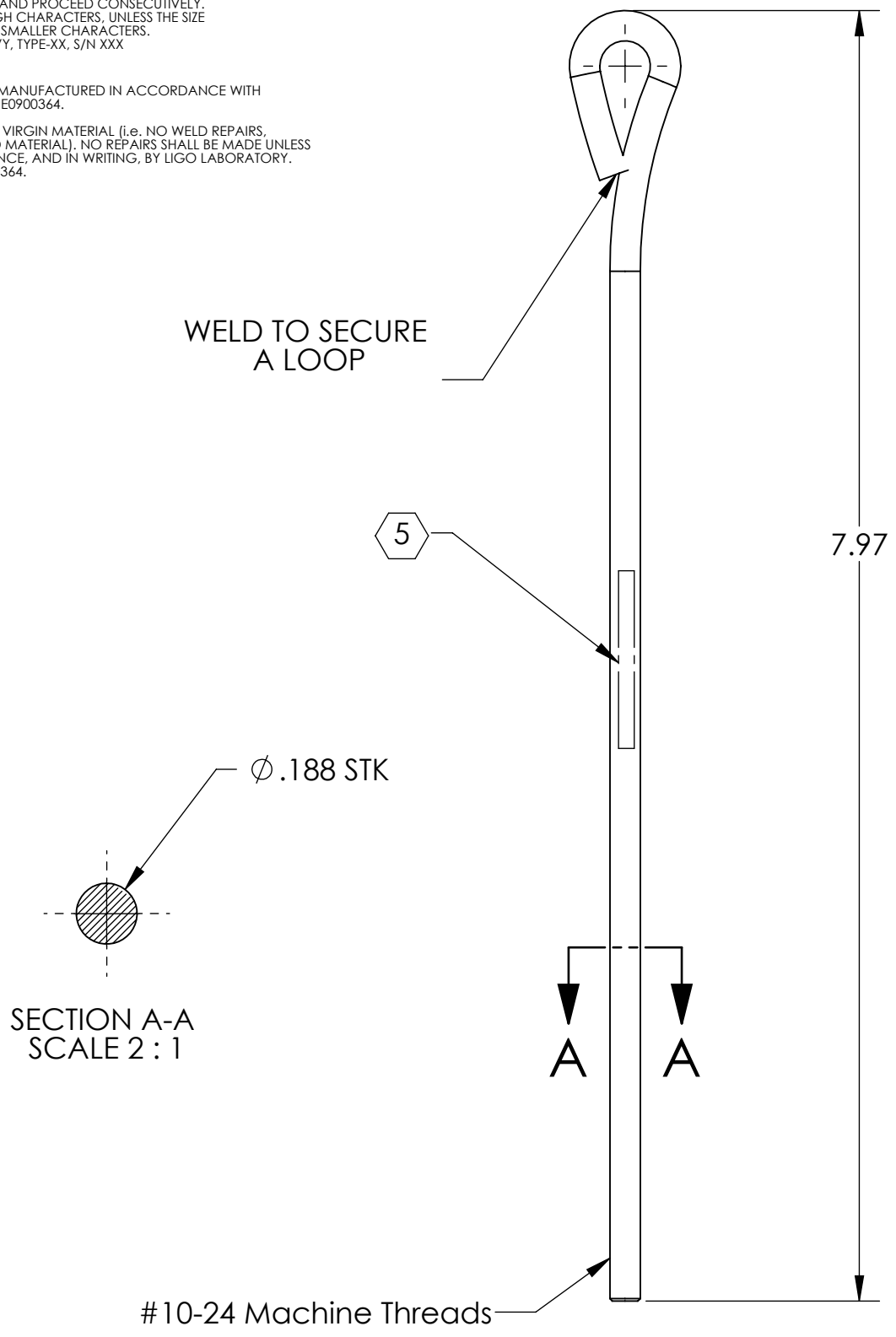


D1101298_d11GO_Manifold_Cryopump_Baffle_Blade_Spring_Bending_Hook_Assy, PART PDM REV: X-007, DRAWING PDM REV: X-006

NOTES CONTINUED:
 5. SCRIBE, ENGRAVE (A VIBRATORY TOOL MAY BE USED), LASER MARK OR MECHANICALLY STAMP (NO INKS OR DYES) DRAWING PART NUMBER, REVISION (AND VARIANT OR "TYPE" IF APPLICABLE) ON NOTED SURFACE OF PART FOLLOWED ON THE NEXT LINE WITH A THREE DIGIT SERIAL NUMBER. SERIAL NUMBERS START AT 001 FOR THE FIRST ARTICLE AND PROCEED CONSECUTIVELY. USE MINIMUM 0.12" HIGH CHARACTERS, UNLESS THE SIZE OF THE PART DICTATES SMALLER CHARACTERS. EXAMPLE: DXXXXXX-VY, TYPE-XX, S/N XXX

6. ALL PARTS SHALL BE MANUFACTURED IN ACCORDANCE WITH LIGO SPECIFICATION E0900364.
 7. ALL MATERIAL IS TO BE VIRGIN MATERIAL (i.e. NO WELD REPAIRS, PLUGS OR RECYCLED MATERIAL). NO REPAIRS SHALL BE MADE UNLESS APPROVED IN ADVANCE, AND IN WRITING, BY LIGO LABORATORY. REFER TO LIGO-E0900364.

REV.	DATE	DCN #	DRAWING TREE #
v1	-	-	-
v2	2 AUG 2012	E1100312	-
-	-	-	-



GENERAL VIEW FOR REFERENCE ONLY NO SCALE

NOTES AND TOLERANCES: (UNLESS OTHERWISE SPECIFIED)	
DIMENSIONS ARE IN INCHES	
TOLERANCES: .XX ± .03 .XXX ± .010 ANGULAR ± 1.0°	
MATERIAL	304 SSSL
FINISH	63 μinch

CALIFORNIA INSTITUTE OF TECHNOLOGY MASSACHUSETTS INSTITUTE OF TECHNOLOGY		PART NAME BLADE SPRING BENDING HOOK ASSY	
SYSTEM	ADVANCED LIGO	SUB-SYSTEM	AOS
DESIGNER	H. KELMAN	1 MAY 2011	SIZE DWG. NO.
DRAFTER	TQ. NGUYEN	11 JUL 2011	B
CHECKER	M. SMITH	20 OCT 2011	D1101298
APPROVAL	D. COYNE	20 OCT 2011	REV. v2
NEXT ASSY		SCALE: 1:1	PROJECTION:
		SHEET 1 OF 1	