

REV.	DATE	DCN #	BOM #
v1	05 AUG 2011	E1100351	E1100682-v1
-	-	-	-
-	-	-	-

**NOTES CONTINUED:**

- 5. BAG OR WRAP AND TAG ASSEMBLIES SEPARATELY WITH DRAWING NUMBER, REVISION, SERIAL NUMBER, AND QUANTITY. SERIAL NUMBERS START AT 001 FOR THE FIRST ARTICLE AND PROCEED CONSECUTIVELY. EXAMPLE (TAG): DXXXXXXX-VY, S/N 001, QTY:1
- 6. APPROXIMATE WEIGHT = 2.89 LB [1.31 KG].
- 7. SUITABLE SUBSTITUTES MAY BE USED FOR COTS ITEMS.

7	9	92200A198		McMASTER, SOCKET HEAD CAP SCREW, #8-32 X .88 LG, NAS 1352C-08-14	300 SSSL	3	2	5
7	8	90135A455		McMASTER, SHIM WASHER, .171 ID X .241 OD X.030 THK, SSSL	18-8 SSSL	3	3	6
	7	D1101362	v1	TMS TOOLING FIXTURE CLAMP	6061-T6 Al	3	-	3
7	6	92200A541		McMASTER, SOCKET HEAD CAP SCREW, .25-20 UNC X .88 LG, NAS 1352C-4-14	300 SSSL	3	2	5
7	5	MS 15795-854		WASHER, 1/4, FLAT, .296 ID X .438 OD X .032 THK, SSSL	300 SSSL	3	3	6
7	4	9263K696 (McM-Carr) or equiv		O-RING, 2.5MM WIDTH, 7MM I.D. APPROVED VITON ELASTOMER, SHORE A 70-75	FLUORO-ELASTOMER	3	3	6
	3	D1100418	v1	GLIGO TMS TOOLING TELESCOPE MIRROR CLAMP, 2 IN.	DIE CAST ALUMINUM	1	-	1
	2	D1101109	v1	TMS TELESCOPE INPUT BEAM ALIGNMENT MIRROR	TRANSPARENT GLASS	1	-	1
	1	D1101342	v1	GLIGO TMS TOOLING PRIMARY MIRROR PLATE	DIE CAST ALUMINUM	1	-	1
	<b>ITEM NO.</b>	<b>PART NUMBER</b>	<b>REV</b>	<b>DESCRIPTION</b>	<b>MATERIAL</b>	<b>REQ</b>	<b>SPARE</b>	<b>TOTAL</b>

NOTES AND TOLERANCES: (UNLESS OTHERWISE SPECIFIED)	
DIMENSIONS ARE IN INCHES	1. INTERPRET DRAWING PER ASME Y14.5-1994.
TOLERANCES:	2. REMOVE ALL SHARP EDGES, .005-.015, FOR MACHINED PARTS. ROUND ALL EDGES APPROXIMATELY R.02 FOR SHEET METAL PARTS.
.XX ± .01	3. DO NOT SCALE FROM DRAWING.
.XXX ± .005	4. ALL MACHINING FLUIDS MUST BE FULLY SYNTHETIC, FULLY WATER SOLUBLE AND FREE OF SULFUR, SILICONE, AND CHLORINE.
ANGULAR ± 1.0°	
<b>MATERIAL</b>	<b>FINISH</b>
N/A	N/A μinch

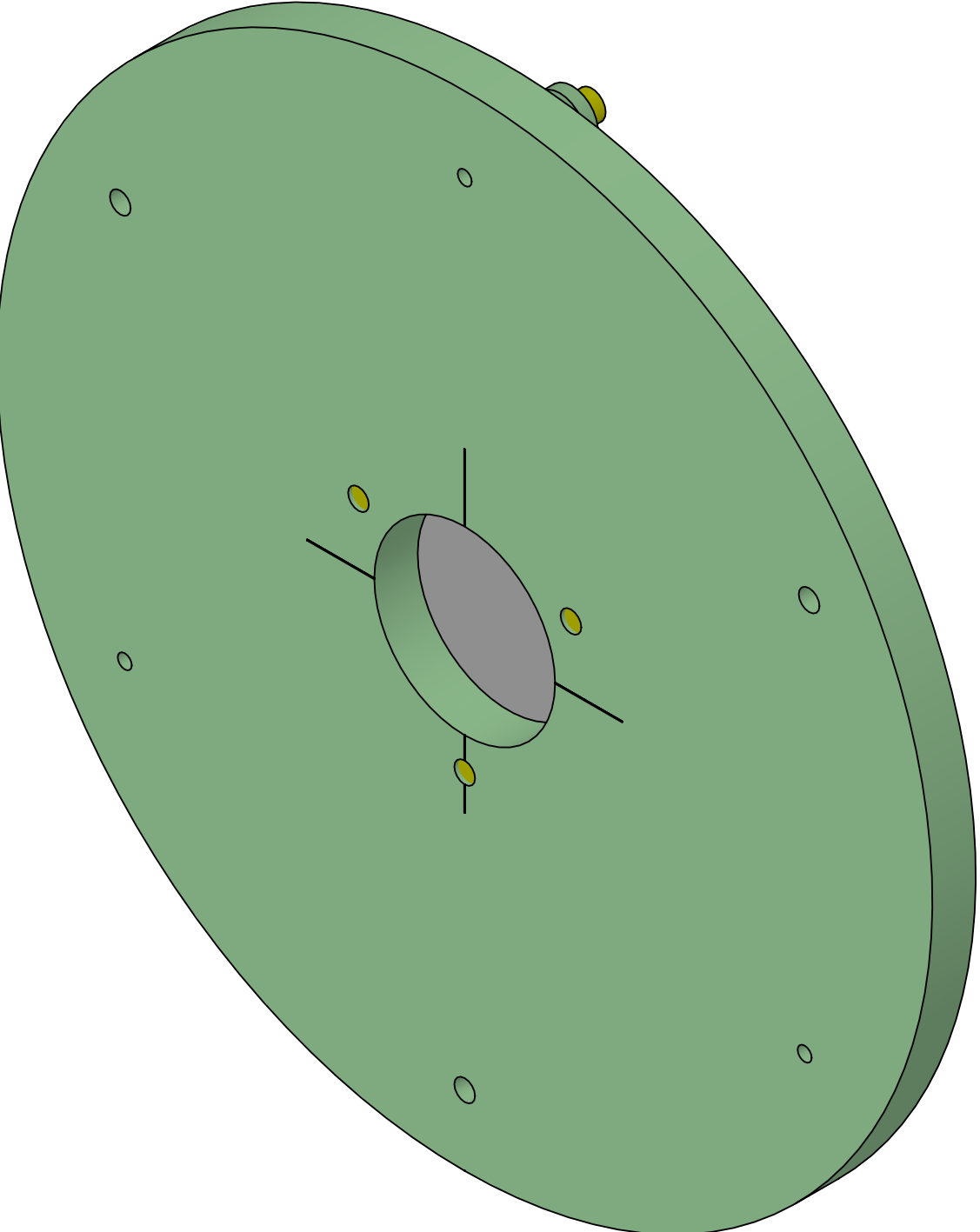
PARTS LIST			
<b>SYSTEM</b>	<b>SUB-SYSTEM</b>	<b>DESIGNER</b>	<b>DATE</b>
ADVANCED LIGO	AOS	K. MAILAND	12 JUL 2011
<b>DRAFTER</b>	<b>CHECKER</b>	<b>APPROVAL</b>	<b>REV.</b>
	SEE DCN	SEE DCN	v1
<b>SCALE</b>	<b>PROJECTION</b>	<b>SIZE DWG. NO.</b>	<b>SHEET 1 OF 4</b>
NONE		B D1101361	

D1101361 TMS Tooling Telescope I-P Alignment Mirror Assembly, PART PDM REV: X-023, DRAWING PDM REV: X-015

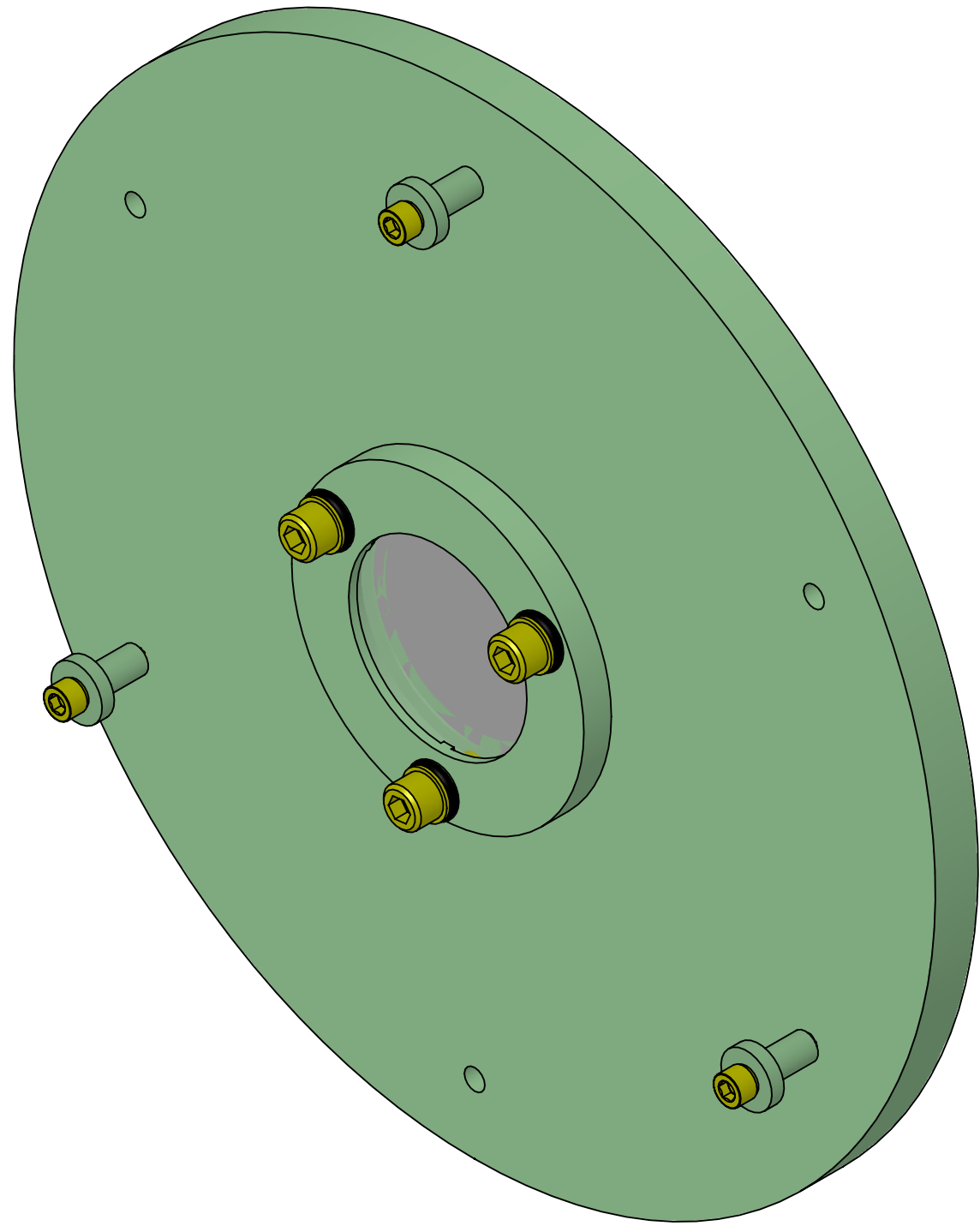
D1101361 TMS Tooling Telescope I-P Alignment Mirror Assembly, PART PDM REV: X-023, DRAWING PDM REV: X-015

8 7 6 5 4 3 2 1

D  
C  
B  
A



ISO VIEW



BACK ISO VIEW

8 7 6 5 4 3 2 1

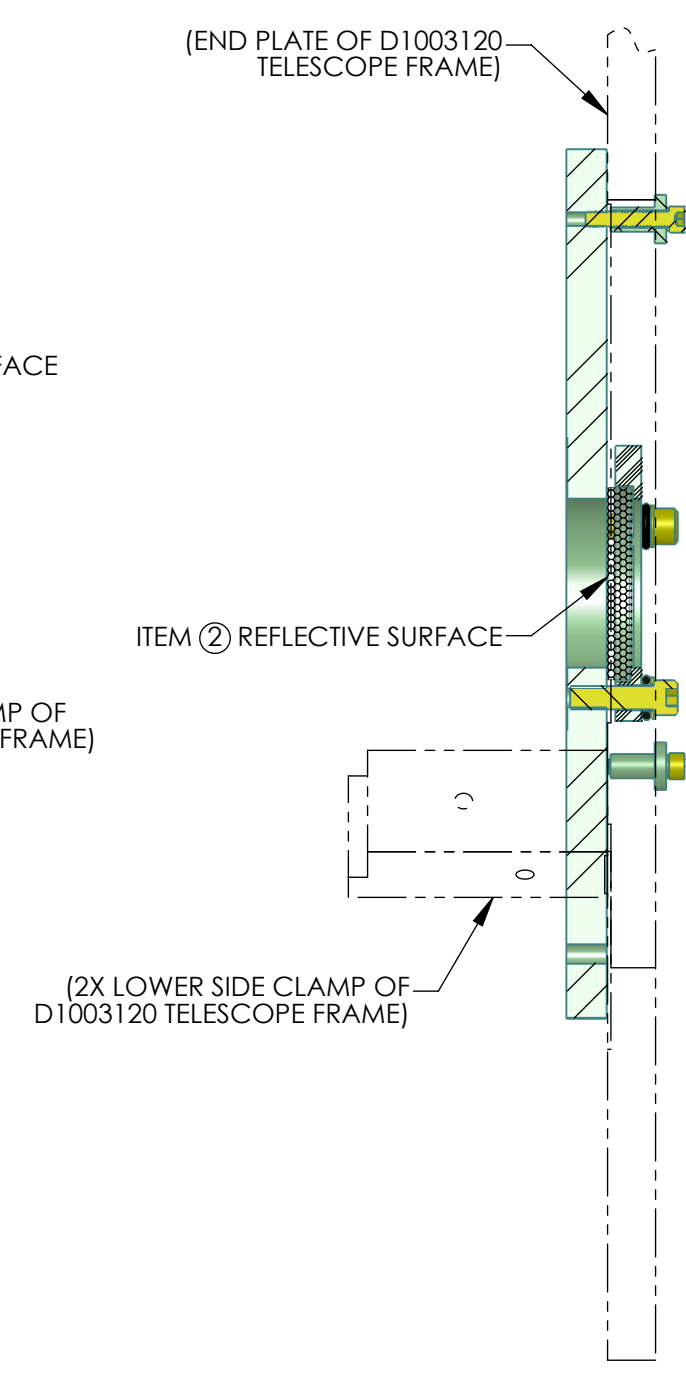
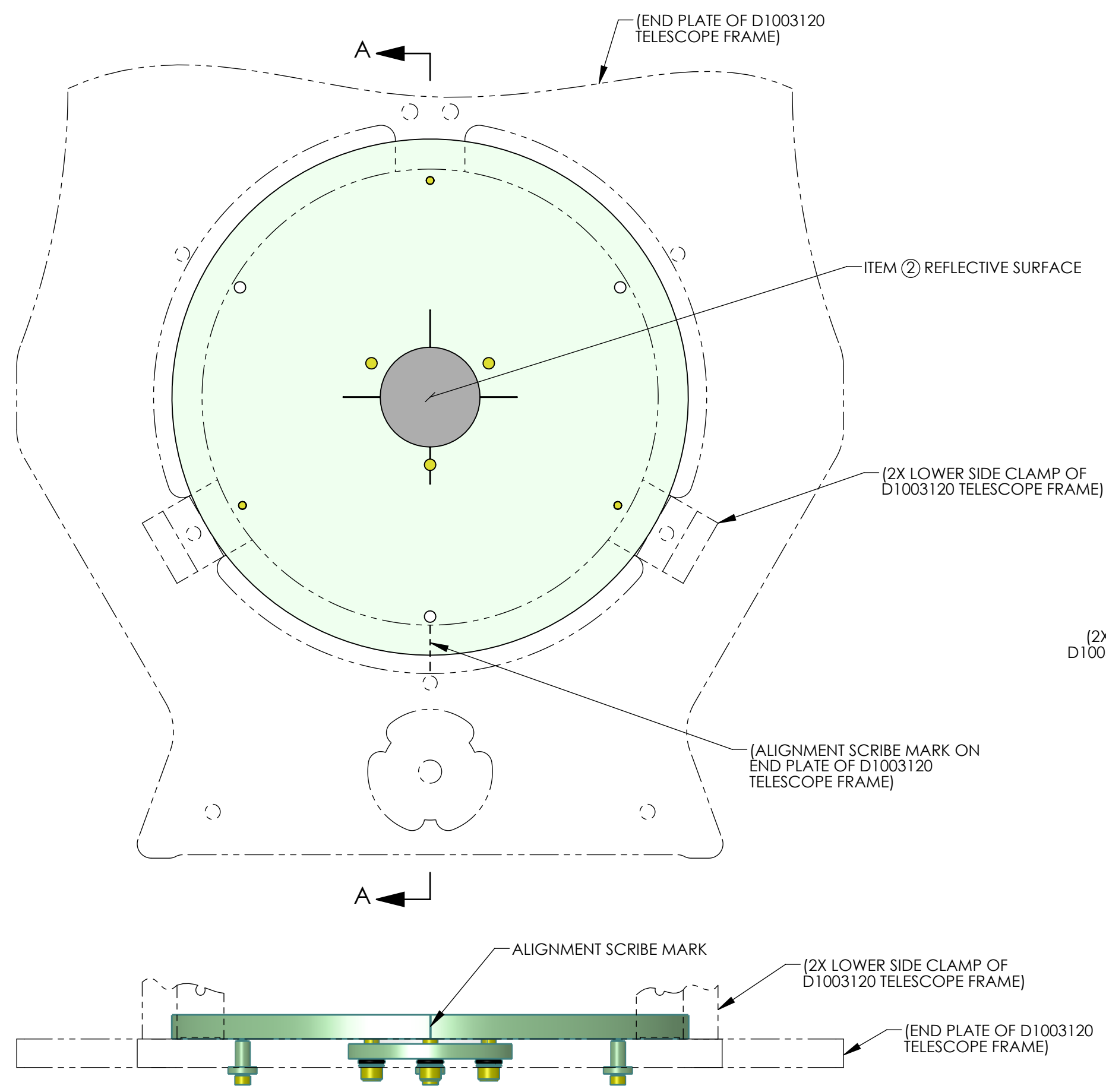
**LIGO** CALIFORNIA INSTITUTE OF TECHNOLOGY  
MASSACHUSETTS INSTITUTE OF TECHNOLOGY

SIZE	DWG. NO.	REV.
B	D1101361	v1
SCALE: NONE		PROJECTION:
		SHEET 2 OF 4

D1101361 TMS Tooling Telescope I-P Alignment Mirror Assembly, PART PDM REV: X-023, DRAWING PDM REV: X-015

8 7 6 5 4 3 2 1

D  
C  
B  
A



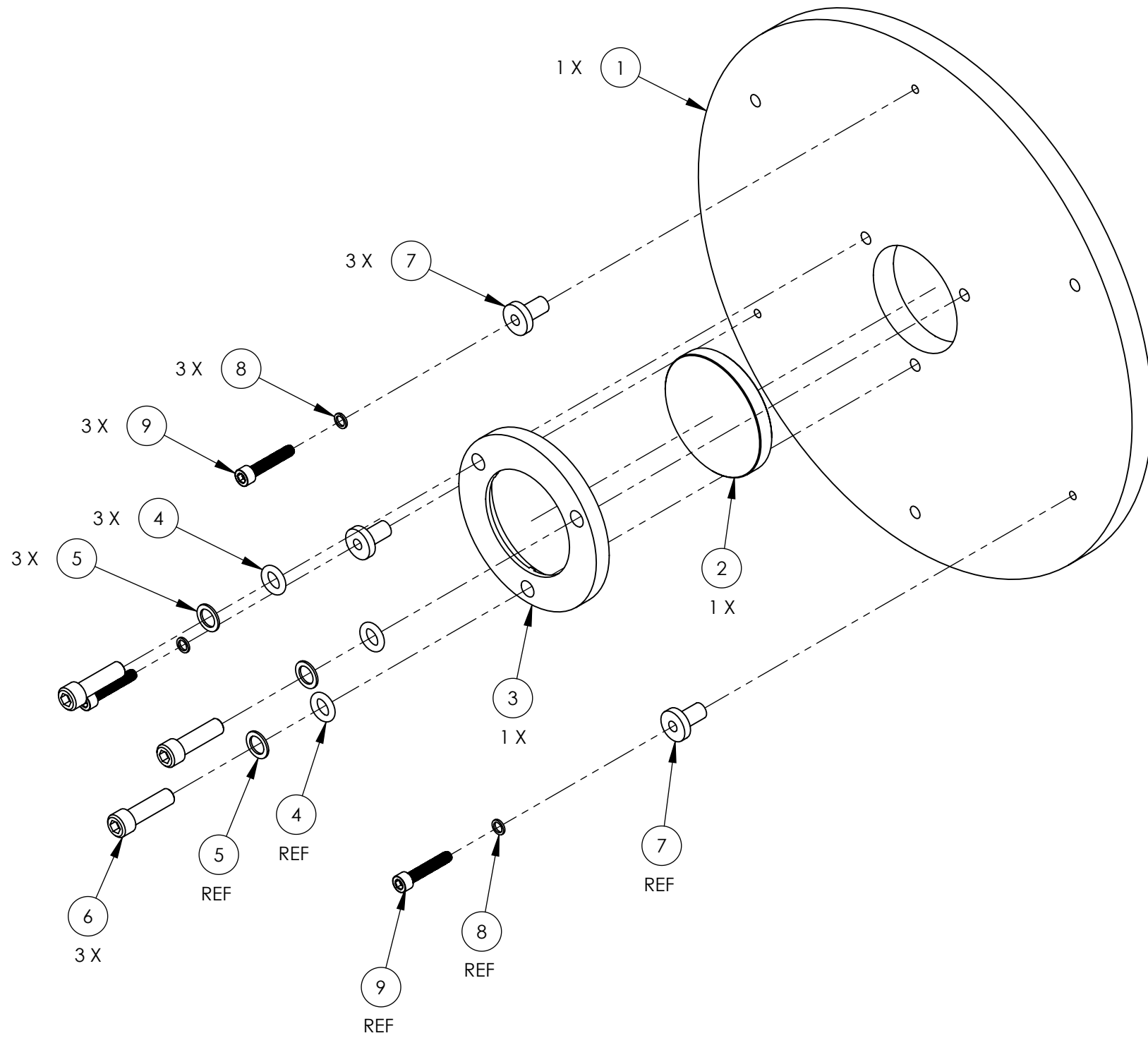
SECTION A-A

**LIGO** CALIFORNIA INSTITUTE OF TECHNOLOGY  
MASSACHUSETTS INSTITUTE OF TECHNOLOGY

SIZE	DWG. NO.	REV.
B	D1101361	v1
SCALE: NONE	PROJECTION:	SHEET 3 OF 4

8 7 6 5 4 3 2 1

D1101361 TMS Tooling Telescope I-P Alignment Mirror Assembly, PART PDM REV: X-023, DRAWING PDM REV: X-015



 CALIFORNIA INSTITUTE OF TECHNOLOGY MASSACHUSETTS INSTITUTE OF TECHNOLOGY		
SIZE <b>B</b>	DWG. NO. D1101361	REV. v1
SCALE: NONE	PROJECTION: 	SHEET 4 OF 4