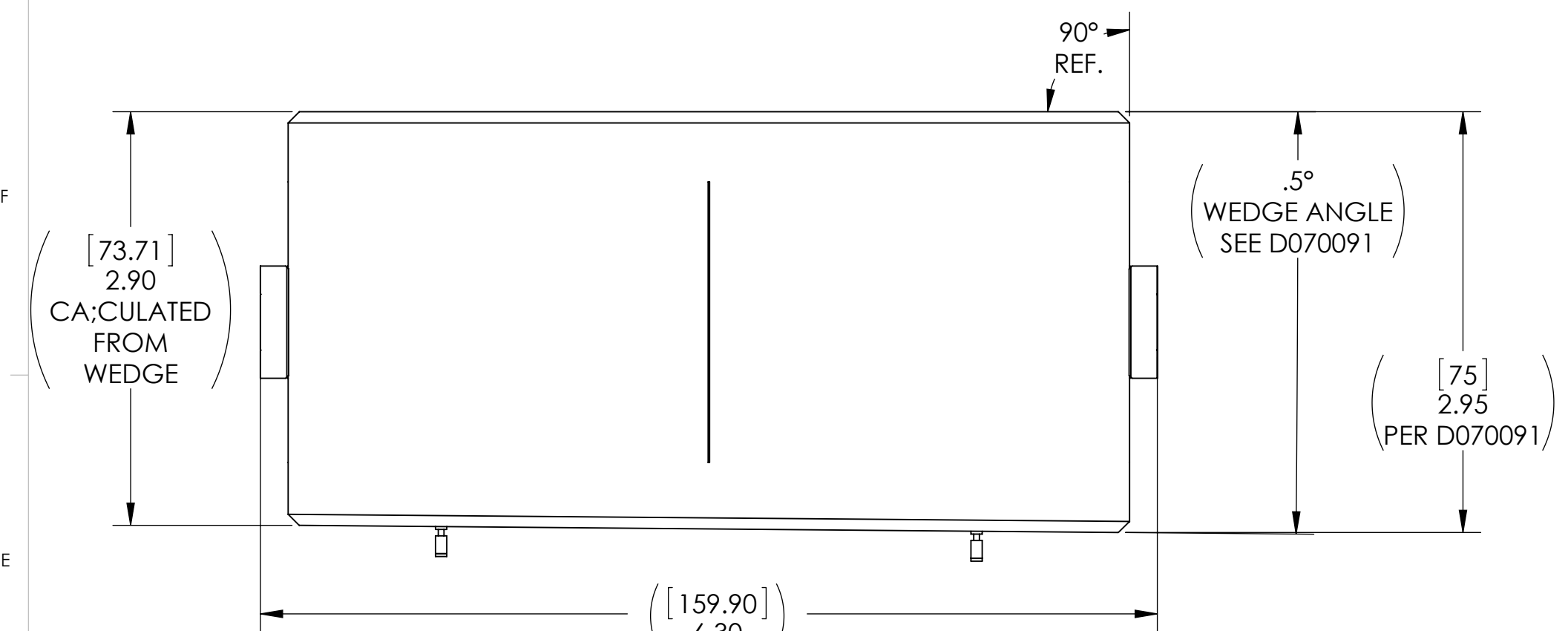
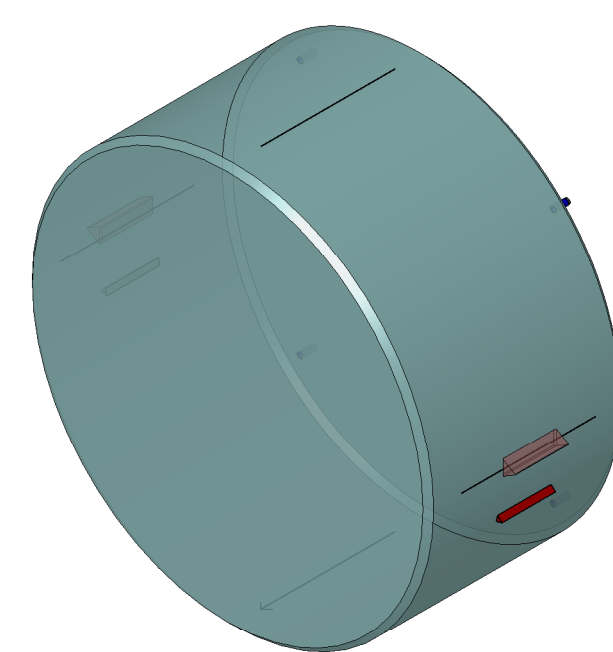


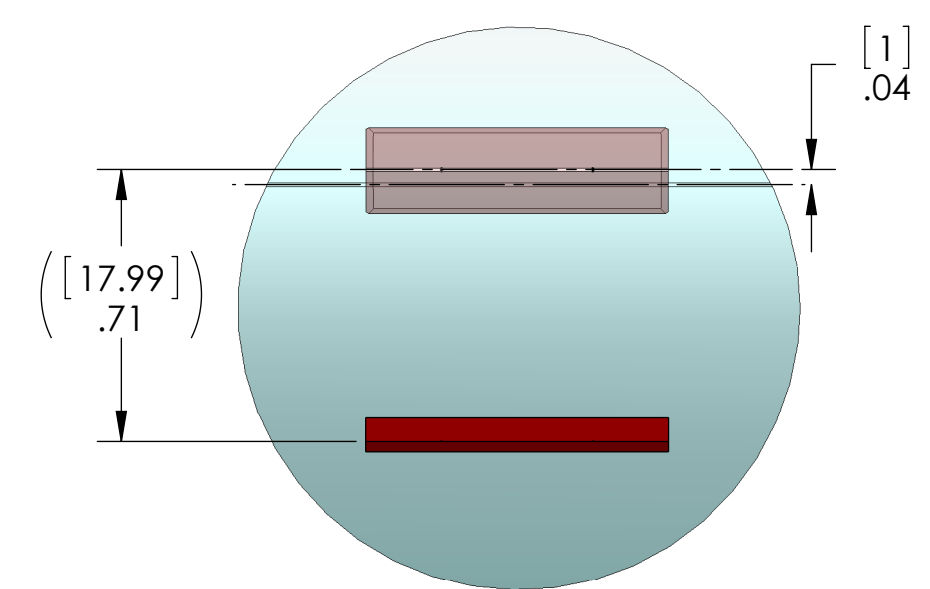
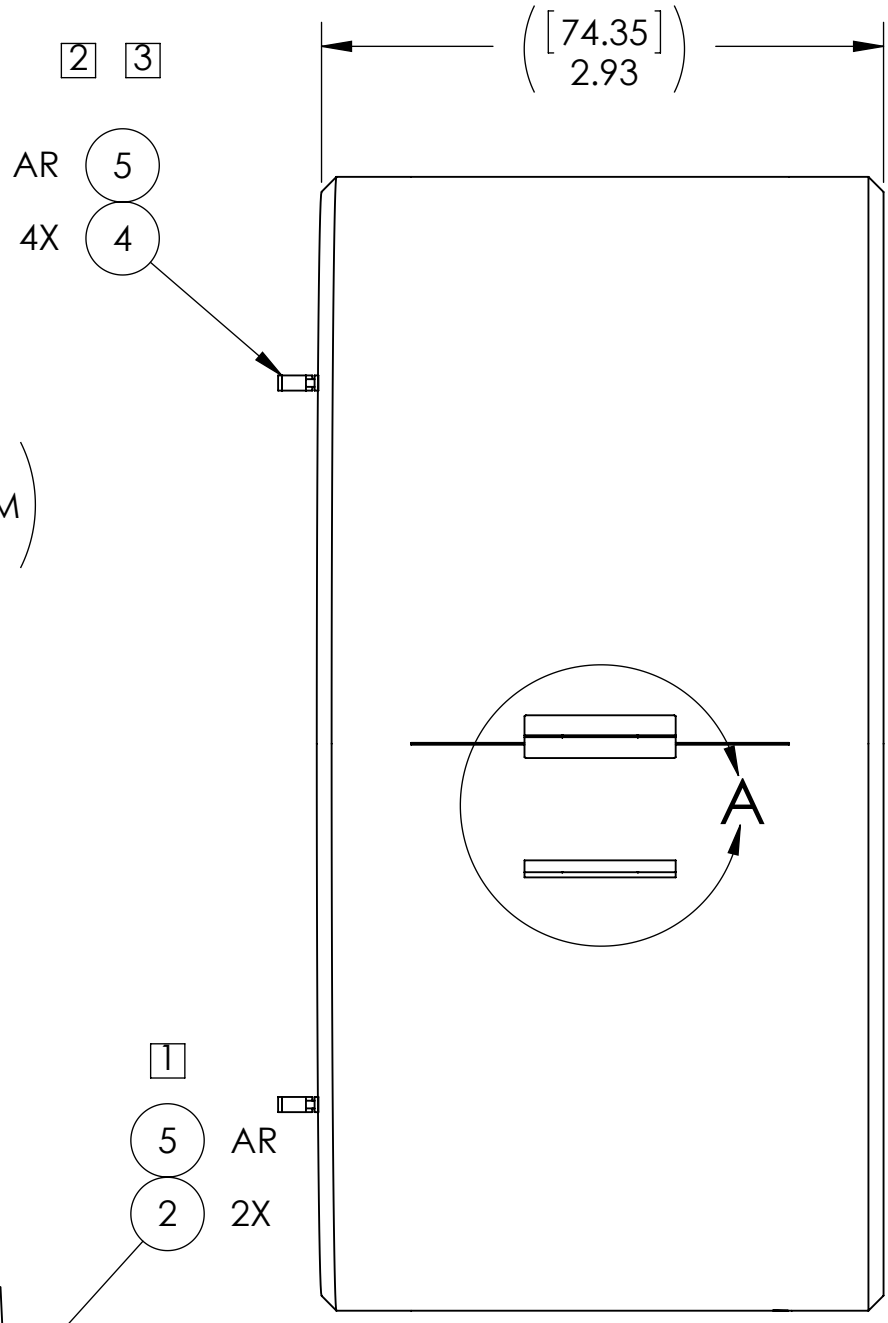
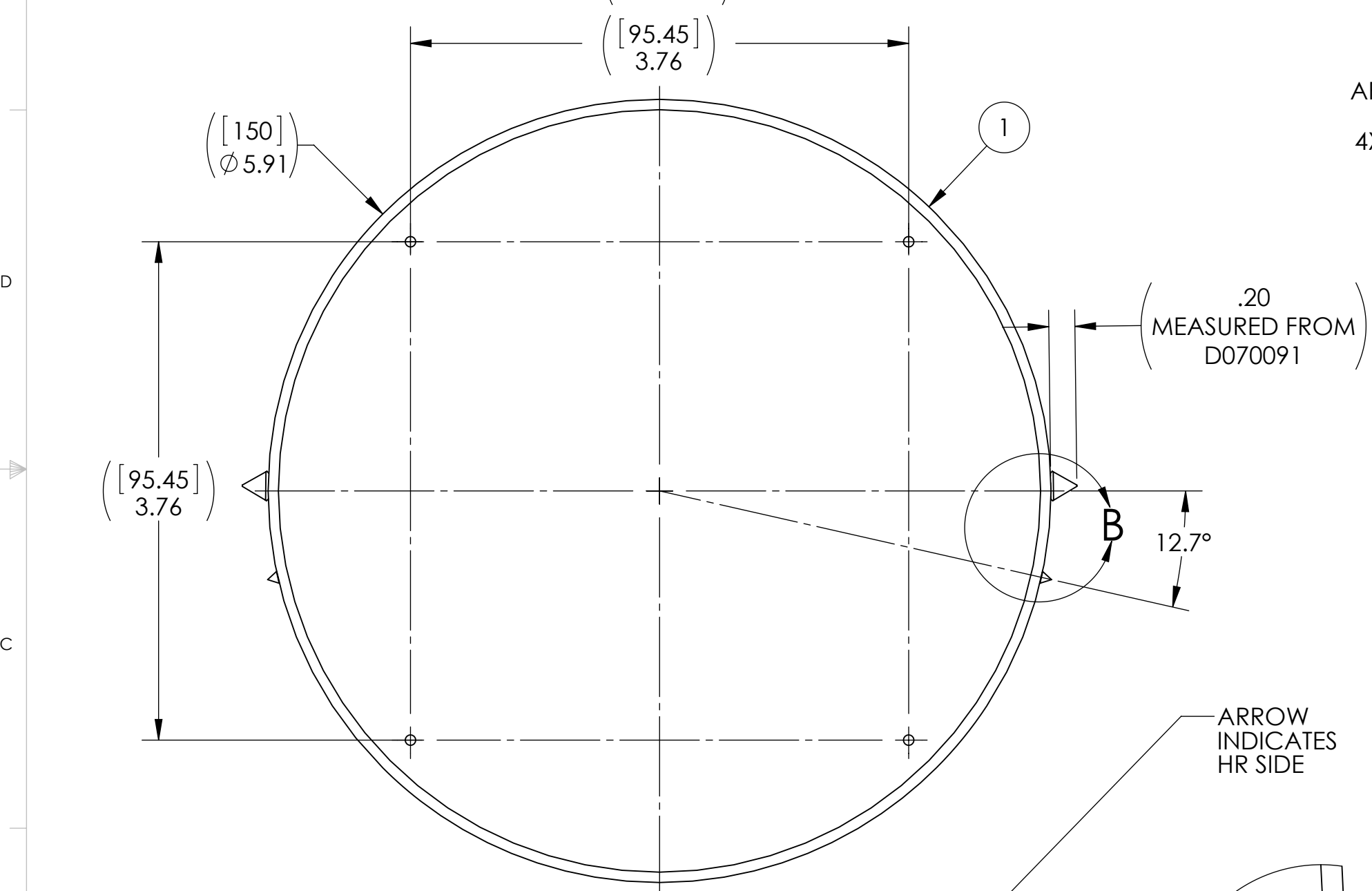
| REV. | DATE | DCN # | DRAWING TREE # |
|------|-------------|-------------|----------------|
| v1 | 04 DEC 2013 | - | - |
| v2 | 08 APR 2014 | E1300890-x0 | - |
| - | - | - | - |



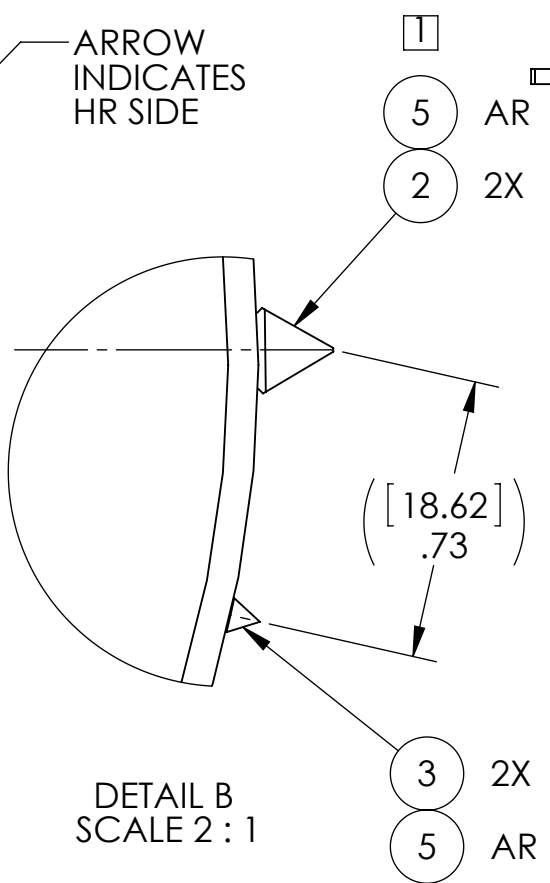
- NOTES:
- REFER TO LIGO E1200211 FOR PRISM GLUING PROCEDURE
 - SEE LIGO E990196 FOR MAGNET/ STANDOFF ASSEMBLY PROCEDURE
 - FOR MAGNET /STANDOFF TO OPTIC GLUING PROCEDURE, SEE E030518
 - SEE E0900342 FOR OPTIC ORIENTATIONS.



ISOMETRIC VIEW
SCALE 1:2



DETAIL A
SCALE 2:1



DETAIL B
SCALE 2:1

| ITEM NO. | PART NUMBER | DESCRIPTION | MATERIAL | QTY. |
|----------|--------------------------|--|----------------------|------|
| 5 | EP30-2 MASTERBOND OR EQ. | UHV - COMPATIBLE ADHESIVE | N/A | A/R |
| 4 | D0902432 | MAGNET/STANDOFF ASSEMBLY, HSTS TEST MASS | N/A | 4 |
| 3 | D0901278 | HSTS SECONDARY METAL PRISM | 304, 316 OR 302 SSSL | 2 |
| 2 | D0810033 | PRISM BREAKOFF | SAPPHIRE | 2 |
| 1 | D070091 | ALIGO INPUT MODE CLEANER FLAT MIRROR SUBSTRATE | FUSED SILICA | 1 |

PARTS LIST

NOTES AND TOLERANCES: (UNLESS OTHERWISE SPECIFIED)

| | |
|----------|-----------|
| MATERIAL | N/A |
| FINISH | N/A μinch |

LIGO CALIFORNIA INSTITUTE OF TECHNOLOGY
MASSACHUSETTS INSTITUTE OF TECHNOLOGY

SYSTEM: ADVANCED LIGO SUB-SYSTEM: SUS

PART NAME: L1-MC1 Optic Assembly

| | | | | | |
|----------|-----------|-------------|------|----------|------|
| DESIGNER | B. MOORE | 19 DEC 2011 | SIZE | DWG. NO. | REV. |
| DRAFTER | E.SANCHEZ | 04 DEC 2013 | c | D1101365 | v2 |
| CHECKER | SEE DCC | SEE DCC | | | |
| APPROVAL | SEE DCC | SEE CC | | | |

SCALE: 1:1 PROJECTION: SHEET 1 OF 1