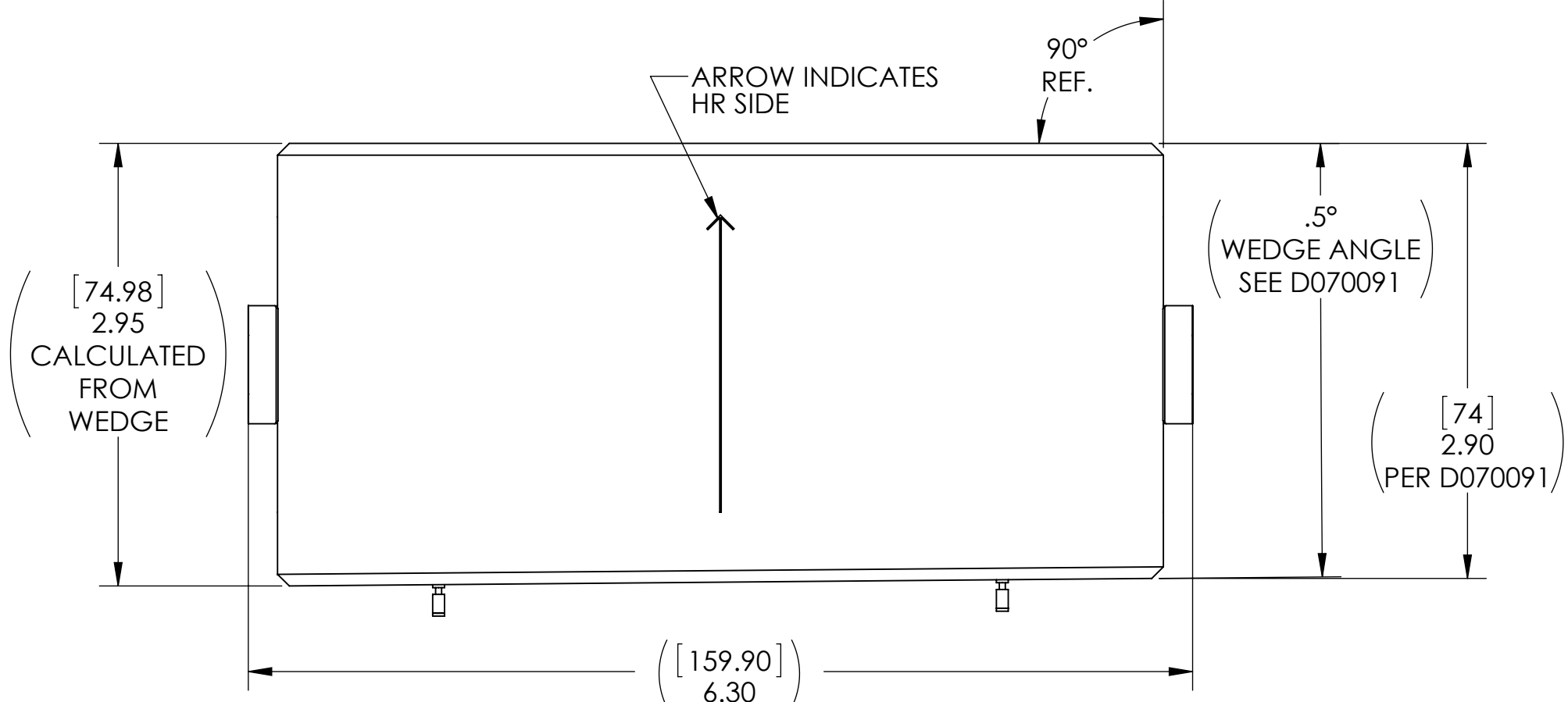
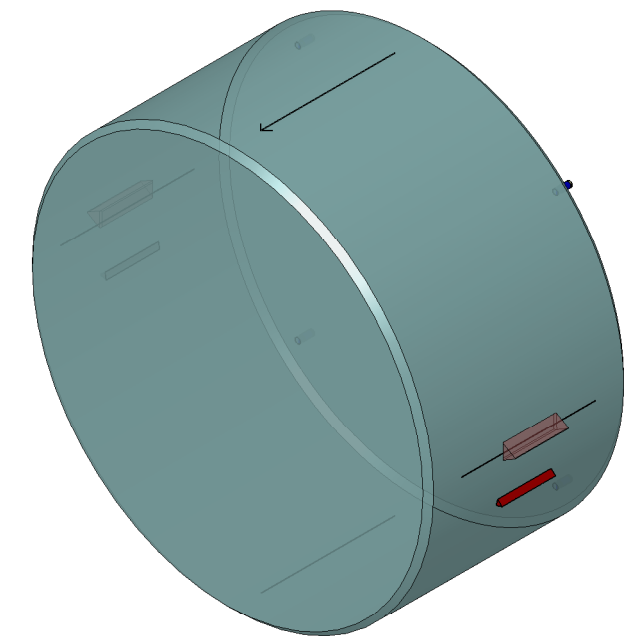


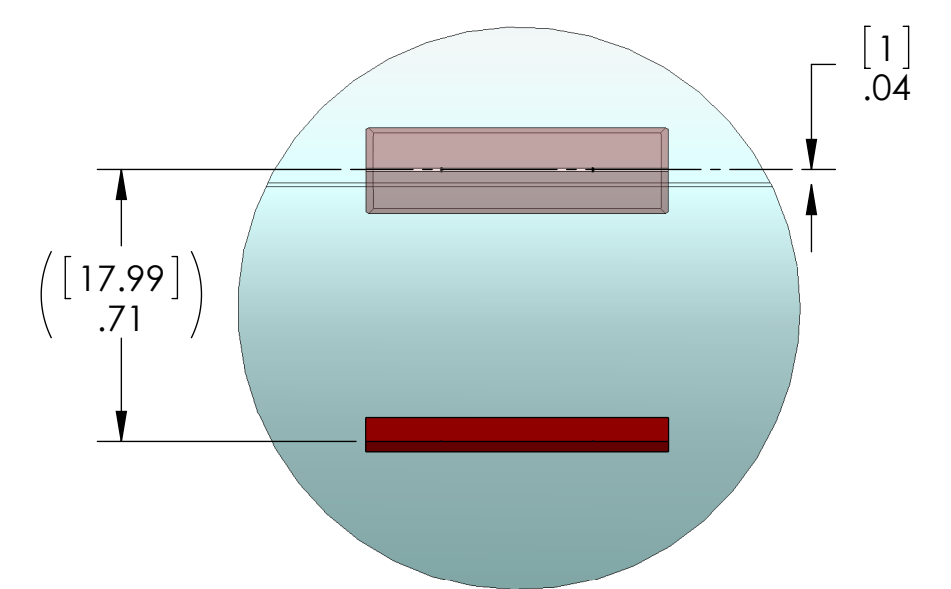
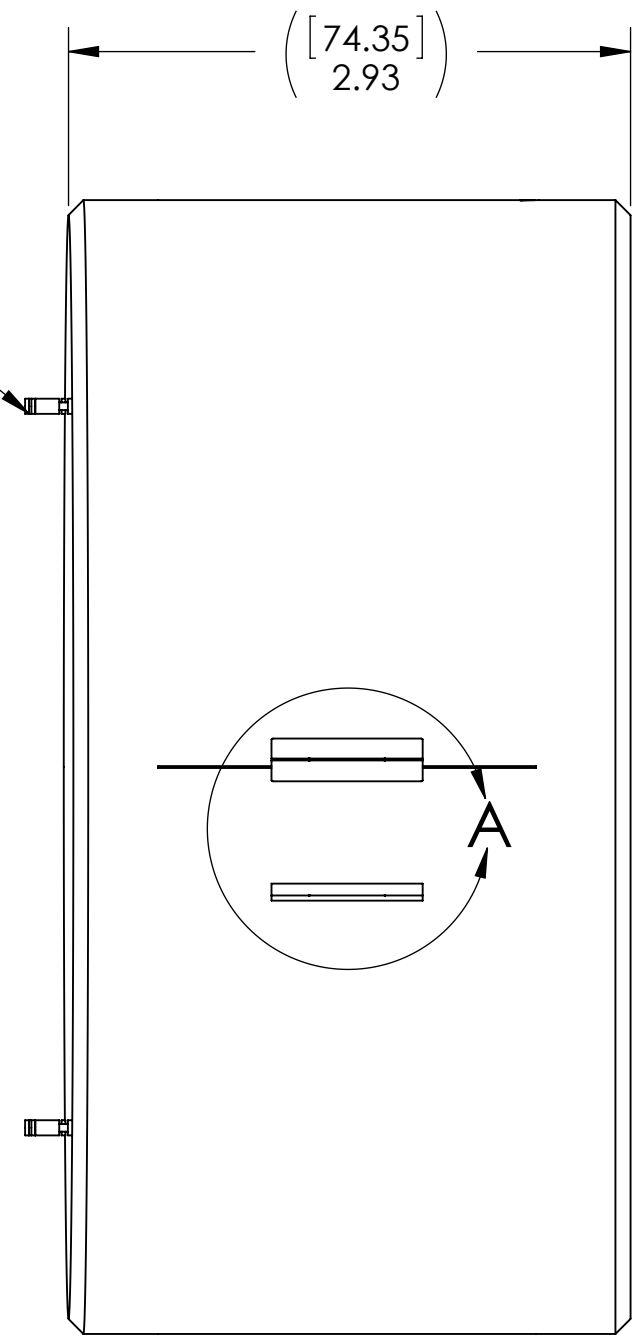
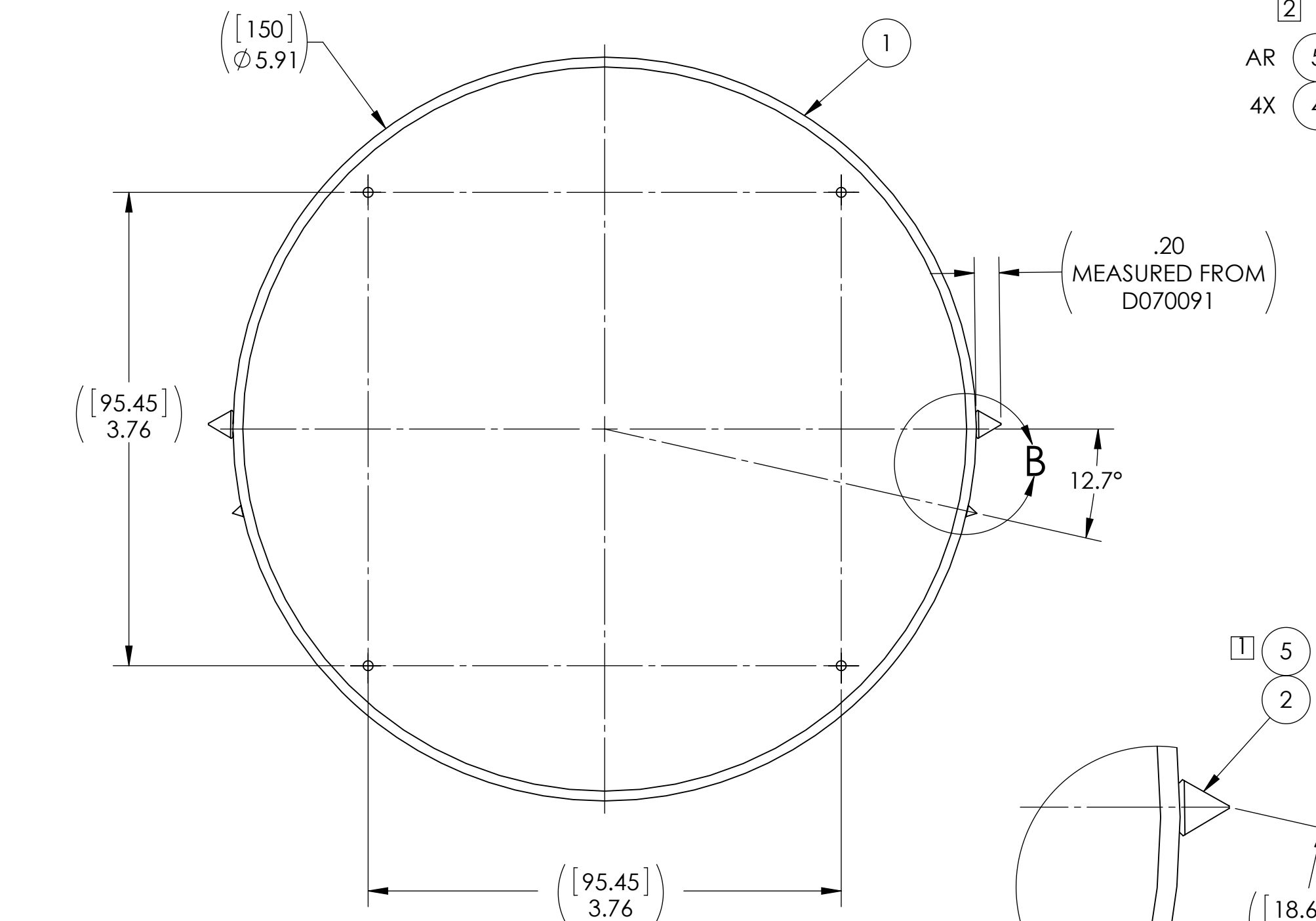
REV.	DATE	DCN #	DRAWING TREE #
v1	04 DEC 2013	-	-
v2	08 APR 2014	E1300890-x0	-
-	-	-	-



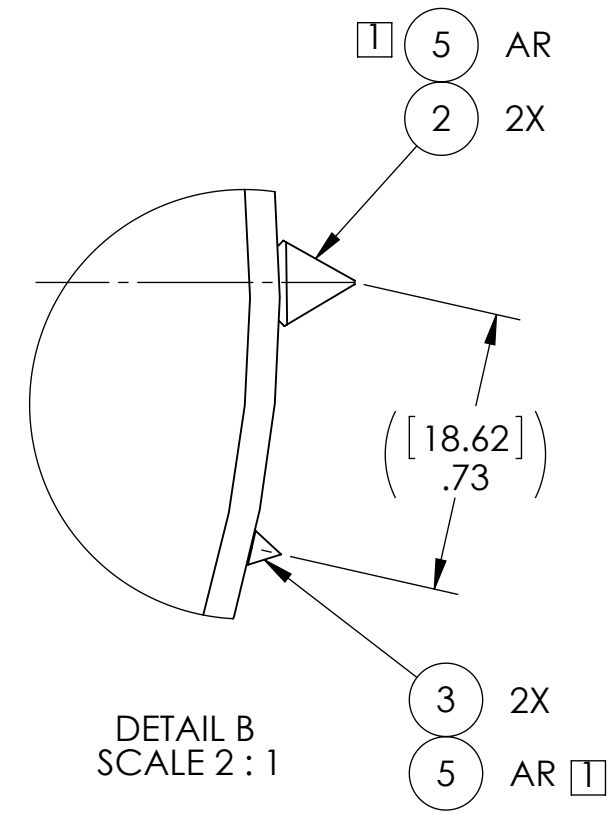
- NOTES:
- REFER TO LIGO E1200211 FOR PRISM GLUING PROCEDURE
 - SEE LIGO E990196 FOR MAGNET/ STANDOFF ASSEMBLY PROCEDURE
 - FOR MAGNET /STANDOFF TO OPTIC GLUING PROCEDURE, SEE E030518
 - SEE E0900342 FOR OPTIC ORIENTATIONS.



ISOMETRIC VIEW
SCALE 1:2



DETAIL A
SCALE 2:1



DETAIL B
SCALE 2:1

ITEM NO.	PART NUMBER	DESCRIPTION	MATERIAL	QTY.
5	EP30-2 MASTERBOND OR EQ.	UHV - COMPATIBLE ADHESIVE	N/A	A/R
4	D0902432	MAGNET/STANDOFF ASSEMBLY, HSTS TEST MASS	N/A	4
3	D0901278	HSTS SECONDARY METAL PRISM	304, 316 OR 302 SSTL	2
2	D0810033	PRISM BREAKOFF	SAPPHIRE	2
1	D070091	gLIGO INPUT MODE CLEANER FLAT MIRROR SUBSTRATE	FUSED SILICA	1

PARTS LIST

NOTES AND TOLERANCES: (UNLESS OTHERWISE SPECIFIED)		CALIFORNIA INSTITUTE OF TECHNOLOGY MASSACHUSETTS INSTITUTE OF TECHNOLOGY		PART NAME H1-MC3 OPTICS ASSEMBLY						
MATERIAL N/A		FINISH N/A μinch		SYSTEM ADVANCED LIGO	SUB-SYSTEM SUS	DESIGNER B. MOORE	DATE 21 DEC 2011	SIZE c	DWG. NO. D1101376	REV. v2
		NEXT ASSY D0901089		CHECKER SEE DCC	DATE 04 DEC 2013	APPROVAL SEE DCC	DATE SEE CC	SCALE: 1:1	PROJECTION:	SHEET 1 OF 1