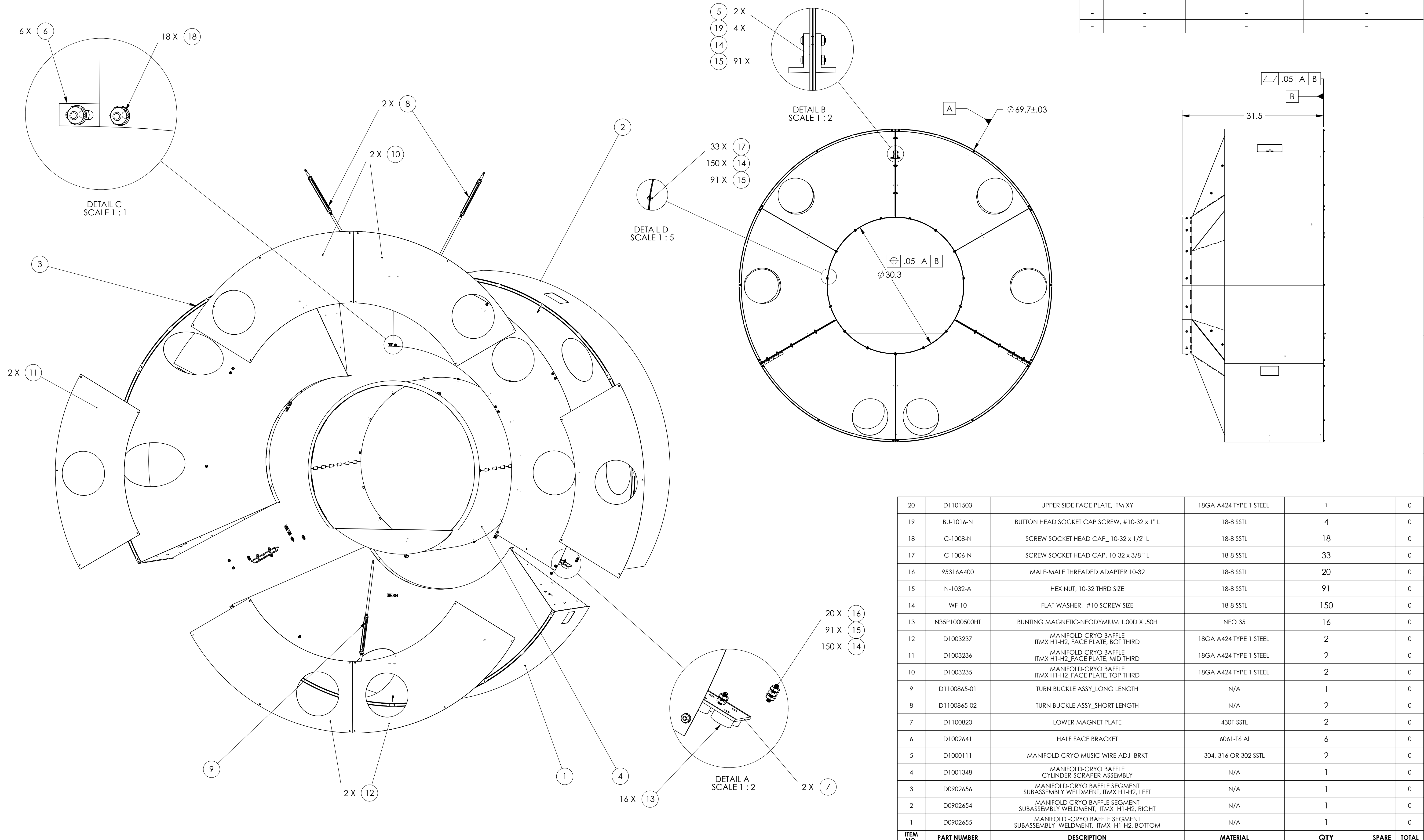


NOTES CONTINUED:

⑤



REV.	DATE	DCN #	DRAWING TREE #
-	-	-	-
-	-	-	-
-	-	-	-

ITEM NO.	PART NUMBER	DESCRIPTION	MATERIAL	QTY	SPARE	TOTAL
20	D1101503	UPPER SIDE FACE PLATE, ITM XY	18GA A424 TYPE 1 STEEL	1		0
19	BU-1016-N	BUTTON HEAD SOCKET CAP SCREW, #10-32 x 1" L	18-8 SSSL	4		0
18	C-1008-N	SCREW SOCKET HEAD CAP, 10-32 x 1/2" L	18-8 SSSL	18		0
17	C-1006-N	SCREW SOCKET HEAD CAP, 10-32 x 3/8" L	18-8 SSSL	33		0
16	95316A400	MALE-MALE THREADED ADAPTER 10-32	18-8 SSSL	20		0
15	N-1032-A	HEX NUT, 10-32 THRD SIZE	18-8 SSSL	91		0
14	WF-10	FLAT WASHER, #10 SCREW SIZE	18-8 SSSL	150		0
13	N35P1000500HT	BUNTING MAGNETIC-NEODYMIUM 1.00D X .50H	NEO 35	16		0
12	D1003237	MANIFOLD-CRYO BAFFLE ITMX H1-H2, FACE PLATE, BOT THIRD	18GA A424 TYPE 1 STEEL	2		0
11	D1003236	MANIFOLD-CRYO BAFFLE ITMX H1-H2, FACE PLATE, MID THIRD	18GA A424 TYPE 1 STEEL	2		0
10	D1003235	MANIFOLD-CRYO BAFFLE ITMX H1-H2, FACE PLATE, TOP THIRD	18GA A424 TYPE 1 STEEL	2		0
9	D1100865-01	TURN BUCKLE ASSY, LONG LENGTH	N/A	1		0
8	D1100865-02	TURN BUCKLE ASSY, SHORT LENGTH	N/A	2		0
7	D1100820	LOWER MAGNET PLATE	430F SSSL	2		0
6	D1002641	HALF FACE BRACKET	6061-T6 Al	6		0
5	D1000111	MANIFOLD CRYO MUSIC WIRE ADJ BRKT	304, 316 OR 302 SSSL	2		0
4	D1001348	MANIFOLD-CRYO BAFFLE CYLINDER-SCRAPER ASSEMBLY	N/A	1		0
3	D0902656	MANIFOLD-CRYO BAFFLE SEGMENT SUBASSEMBLY WELDMENT, ITMX H1-H2, LEFT	N/A	1		0
2	D0902654	MANIFOLD-CRYO BAFFLE SEGMENT SUBASSEMBLY WELDMENT, ITMX H1-H2, RIGHT	N/A	1		0
1	D0902655	MANIFOLD-CRYO BAFFLE SEGMENT SUBASSEMBLY WELDMENT, ITMX H1-H2, BOTTOM	N/A	1		0

NOTES AND TOLERANCES: (UNLESS OTHERWISE SPECIFIED)

1. INTERPRET DRAWING PER ASME Y14.5-1994.
2. REMOVE ALL SHARP EDGES, .005-.015, FOR MACHINED PARTS. ROUND ALL EDGES APPROXIMATELY R.02 FOR SHEET METAL PARTS.
3. DO NOT SCALE FROM DRAWING.
4. ALL MACHINING FLUIDS MUST BE FULLY SYNTHETIC, FULLY WATER SOLUBLE AND FREE OF SULFUR, SILICONE, AND CHLORINE.

MATERIAL	FINISH
N/A	N/A μinch

DIMENSIONS ARE IN INCHES
 TOLERANCES:
 .XX ± .06
 .XXX ± .010
 ANGULAR ± 1.0°

CALIFORNIA INSTITUTE OF TECHNOLOGY MASSACHUSETTS INSTITUTE OF TECHNOLOGY		PART NAME RADIAL SEGMENT ASSY_6 FP	
SYSTEM ADVANCED LIGO	SUB-SYSTEM AOS	DESIGNER H. KELMAN	SIZE D
DRAFTER TQ. NGUYEN	CHECKER M. SMITH	DATE 14 JUL 2011	DWG. NO. D1101397
APPROVAL D. COYNE	NEXT ASSY D0902617	SCALE 1:8	PROJECTION
		REV. v1	SHEET 1 OF 1

D1101397.dwg; LIGO_AOS_Manifold-Cryo Baffle_Weldment Assy_6 FP_PART FDM REV: X:106; DRAWING FDM REV: X:006