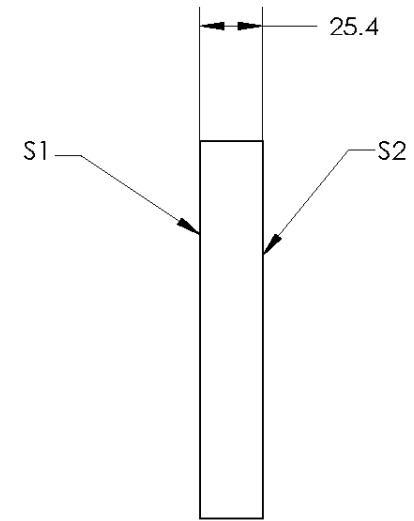
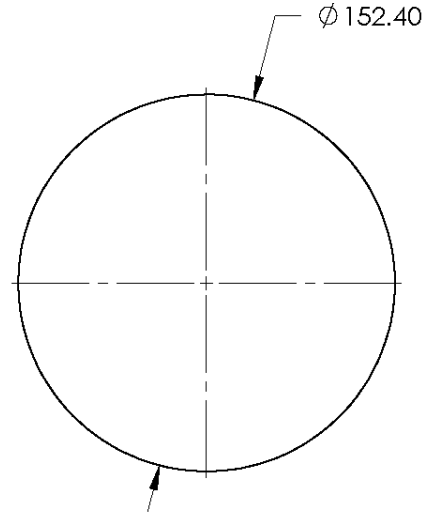


REV.	CHANGES MADE	REV. DATE	REV. BY

NOTES:

- ALLOWABLE OPTICAL MATERIAL:  
ZERODUR®  
SCHOTT: ZERODUR 542/562
- SURFACE S2 TO BE PARALLEL WITH SURFACE S1 TO < 3 ARCMIN
- COATING (APPLY ACROSS COATING APERTURE)  
S1: NONE  
S2: NONE
- EDGES: FINE GROUND



	S1	S2
SHAPE	PLANO	PLANO
RADIUS	INFINITY	INFINITY
SURFACE ACCURACY AT 632.8nm	1/10 WAVE	NA
CLEAR APERTURE	Ø 137.2	Ø 137.2
COATING APERTURE	NA	NA
POWER AT 632.8nm	NA	NA
IRREGULARITY AT 632.8nm	NA	NA
BEVEL MIN FACE	NONE	NONE
BEVEL MAX FACE	1.0 X 45°	1.0 X 45°

	INITIALS	DATE
DRAWN BY		
CHECKED BY		
APPROVED BY		
EFL (AT 587.6nm)	NA	
BFL (AT 587.6nm)	NA	
ALL DIMS IN	mm	

**EO PROPRIETARY INFORMATION**  
THIS DOCUMENT AND THE INFORMATION CONTAINED WITHIN ARE EDMUND OPTICS INC. PROPRIETARY INFORMATION INTENDED SOLELY FOR THE USE OF EDMUND OPTICS, INC. (EO) AND THE RECEIVING PARTIES HEREBY BOUND TO KEEP SUCH INFORMATION CONFIDENTIAL (HEREINAFTER "PARTY"). ANY REVIEW, TRANSMISSION, DISCLOSURE, DUPLICATION, DISCUSSION, PUBLISHING, AND/OR DISTRIBUTION WITH OR TO ANYONE OTHER THAN EO AND PARTY, INCLUDING BUT NOT LIMITED TO ANY OTHER CUSTOMER, AGENT, AND/OR VENDOR, ARE STRICTLY PROHIBITED. UPDATES AND REVISIONS TO THIS DOCUMENT ARE AT THE SOLE DISCRETION OF EDMUND OPTICS, INC.



TITLE	OPTICAL FLAT, 1/10 WAVE ZDUR 6.0IN, UNCTD		
DWG NO	31393	REV	001
PRESCRIPTION	NA		
SCALE	NONE	SHEET 1 OF 1	SHEET SIZE: A