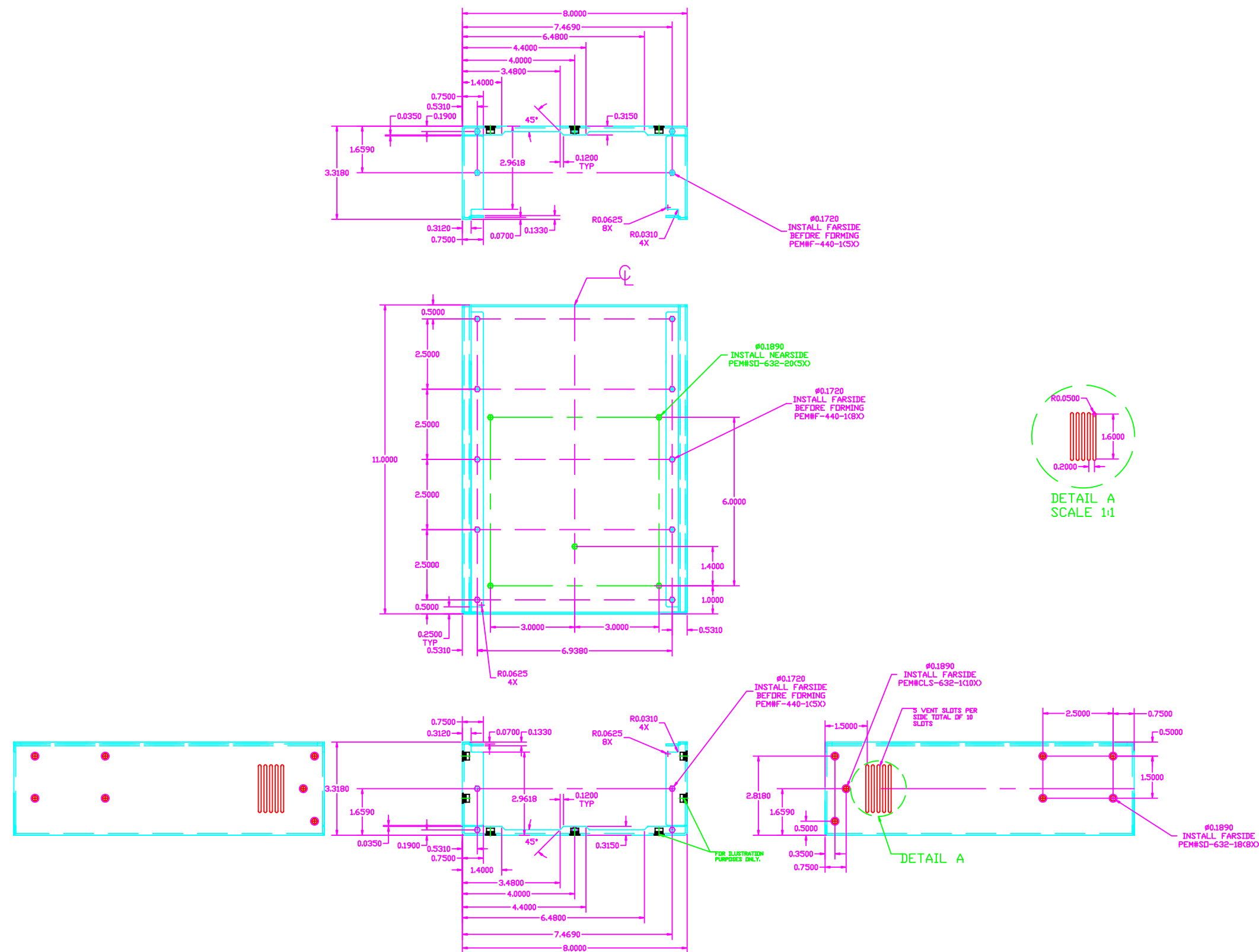


REVISIONS				
ZONE	REV.	DESCRIPTION	DATE	APPROVED

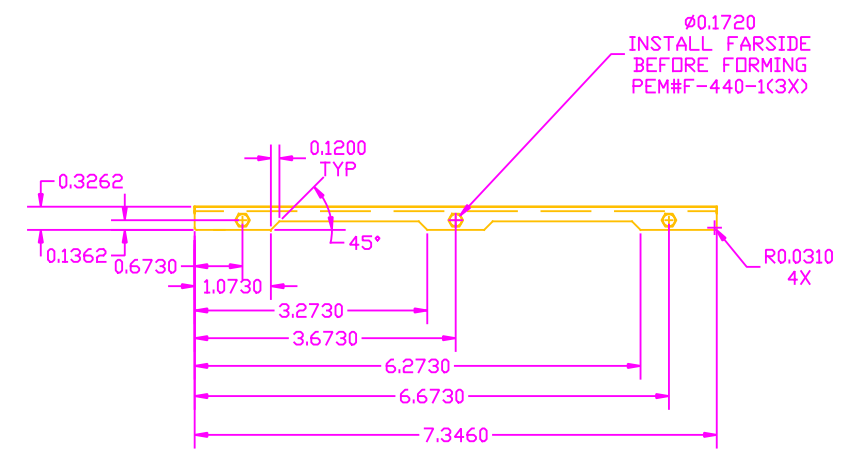
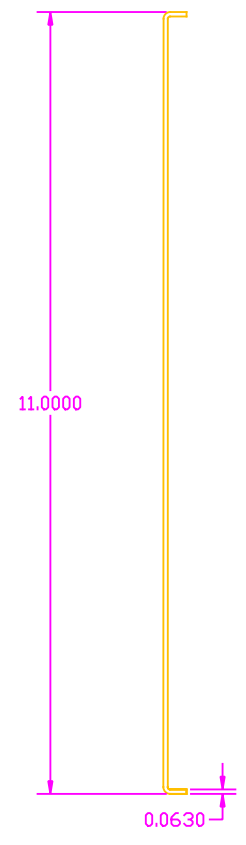
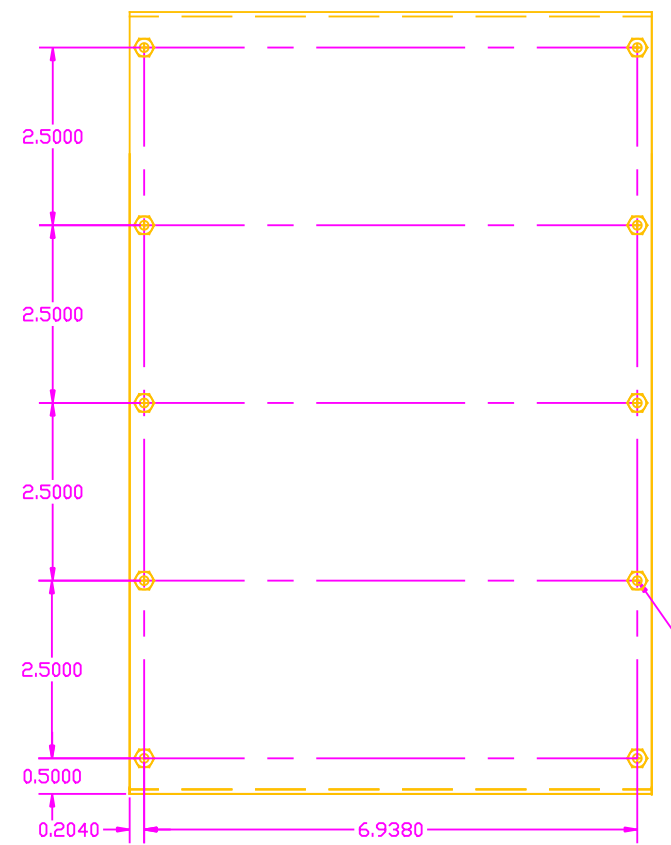
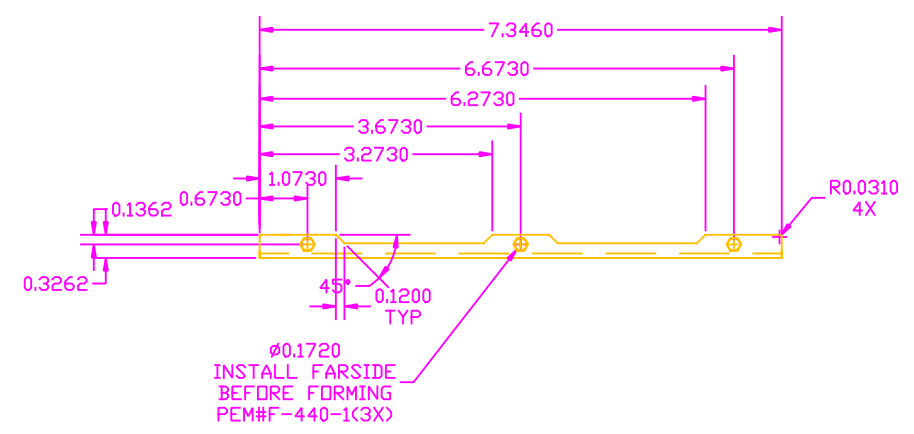


THE PRINT IS THE SOLE PROPERTY OF HAMILTON METALCRAFT AND MAY NOT BE USED OR DISTRIBUTED TO ANY OTHER SOURCE WITHOUT OUR PERMISSION.

**HAMILTON METALCRAFT**  
  
HAMILTON METALCRAFT INC.  
848 NO. FAIR OAKS AVENUE  
PASADENA, CA 91103  
(626)795-4811

cad file/ part #	PICO-MOTOR DRIVER CHASSIS	D1101509	rev v2
D	scale 1:1	DATE 06/05/11	sheet no. 1-2

REVISIONS				
ZONE	REV.	DESCRIPTION	DATE	APPROVED



MAT:063 5052-H32

THE PRINT IS THE SOLE PROPERTY OF HAMILTON METALCRAFT AND MAY NOT BE USED OR DISTRIBUTED TO ANY OTHER SOURCE WITHOUT OUR PERMISSION.



HAMILTON METALCRAFT INC.  
848 NO. FAIR OAKS AVENUE  
PASADENA, CA 91103  
(626)795-4811

cad file/	PICO-MOTOR DRIVER CHASSIS			rev
part #				v2
D	scale 1:1	DATE 06/05/11	sheet no. 2-2	