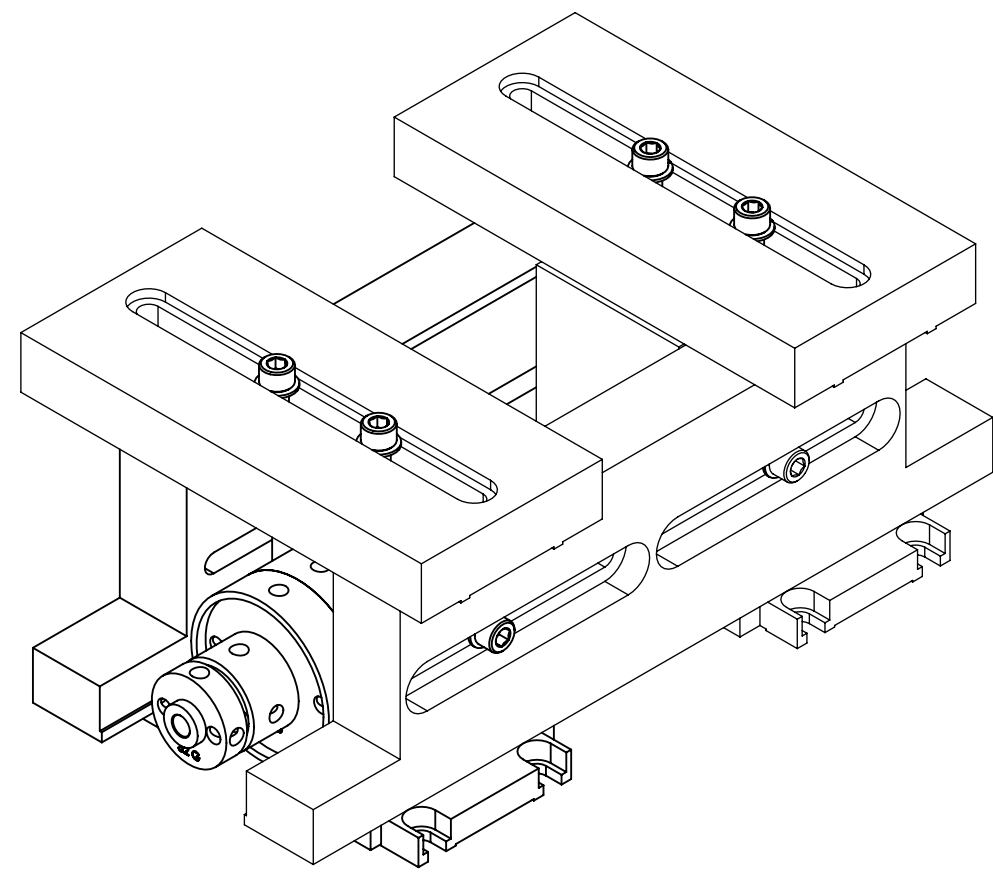
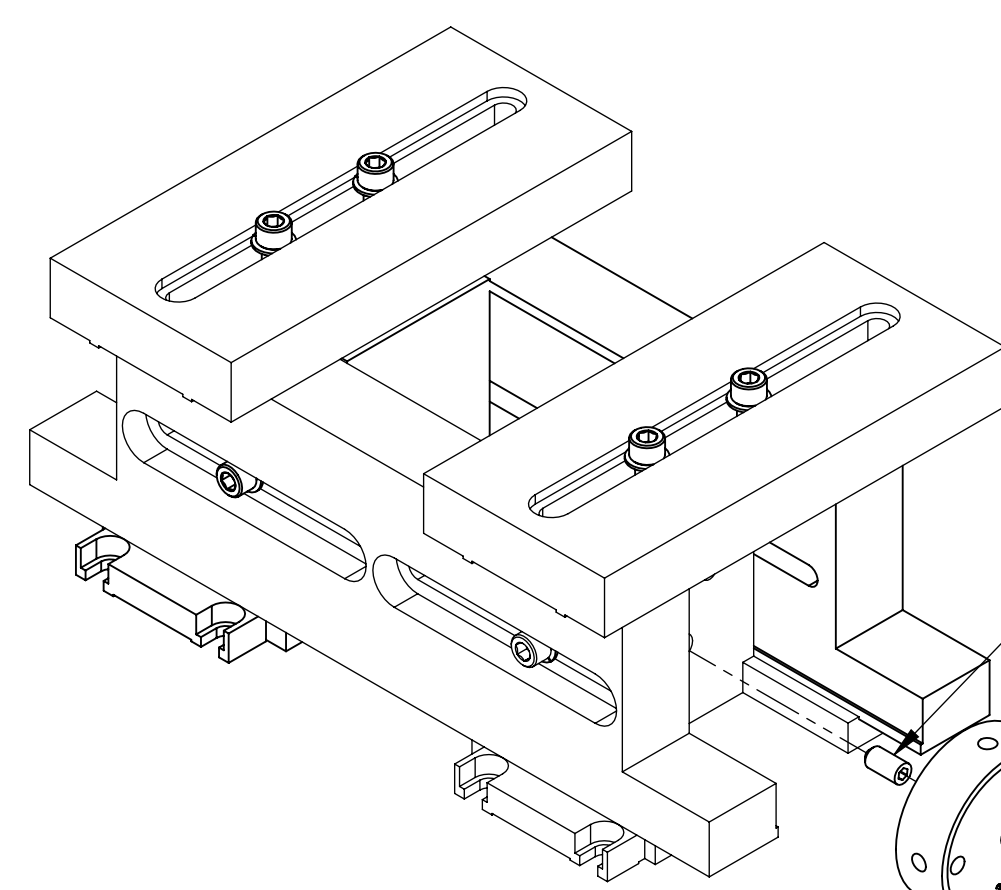


NOTES CONTINUED:
 ① SCRIBE, ENGRAVE, LASER MARK OR MECHANICALLY STAMP (NO DYES OR INKS) A UNIQUE THREE DIGIT SERIAL NUMBER & REVISION NUMBER ON EACH PART. SERIAL NUMBERS START AT 001 FOR THE FIRST ARTICLE AND PROCEED CONSECUTIVELY. BAG AND TAG PARTS WITH THEIR DRAWING PART NUMBER, REVISION, VARIANT OR TYPE (IF APPLICABLE), AND QUANTITY. IF PARTS ARE TOO SMALL TO SCRIBE, BAGGING AND TAGGING ALONE IS SUFFICIENT.
 EXAMPLE (PART): 001-v1
 EXAMPLE (TAG): DXXXXXX-VY, TYPE-XX, QTY: TBD
 2. MASS: APPROX. 98.24 LBS
 ③ INDICATED COMPONENT UNIQUE TO TMS. NOT USED ACROSS MULTIPLE SUB-SYSTEMS

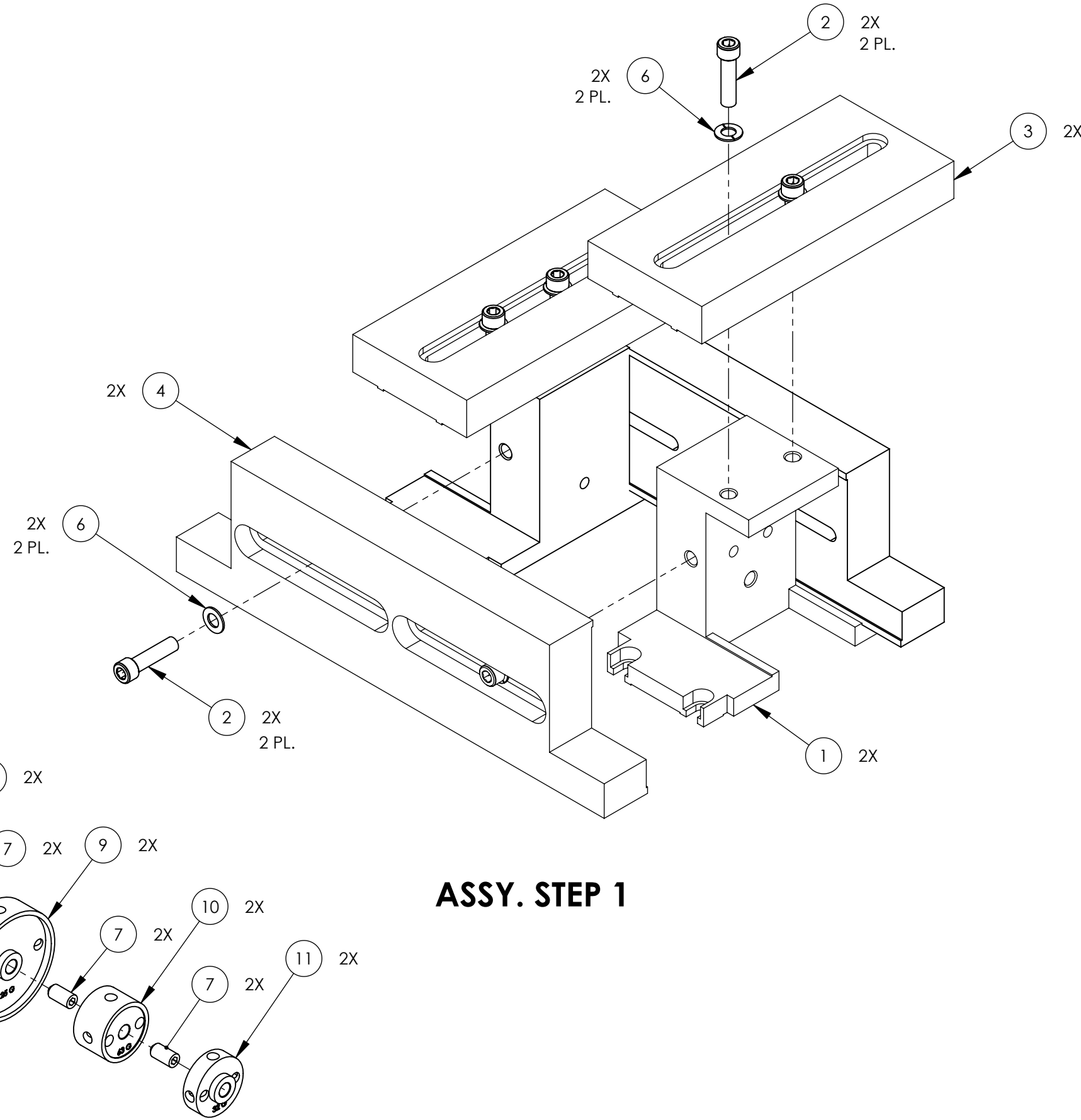
REV.	DATE	DCN #	DRAWING TREE #
v1	26 MAR 2012	E1101214	-
v4	25 JUN 2013	E1300561-x0	-
-	-	-	-



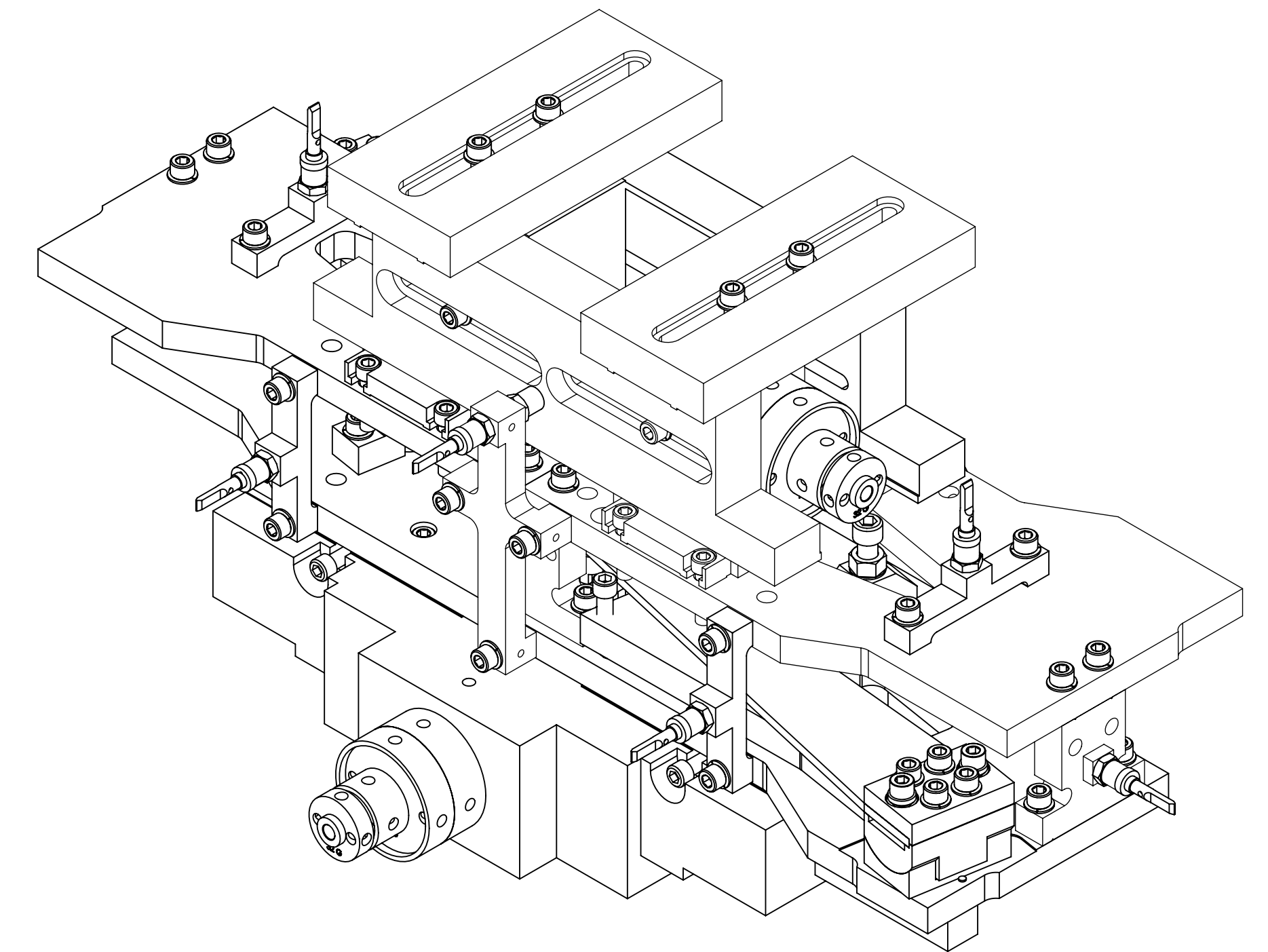
ISO VIEW, FRONT-LEFT



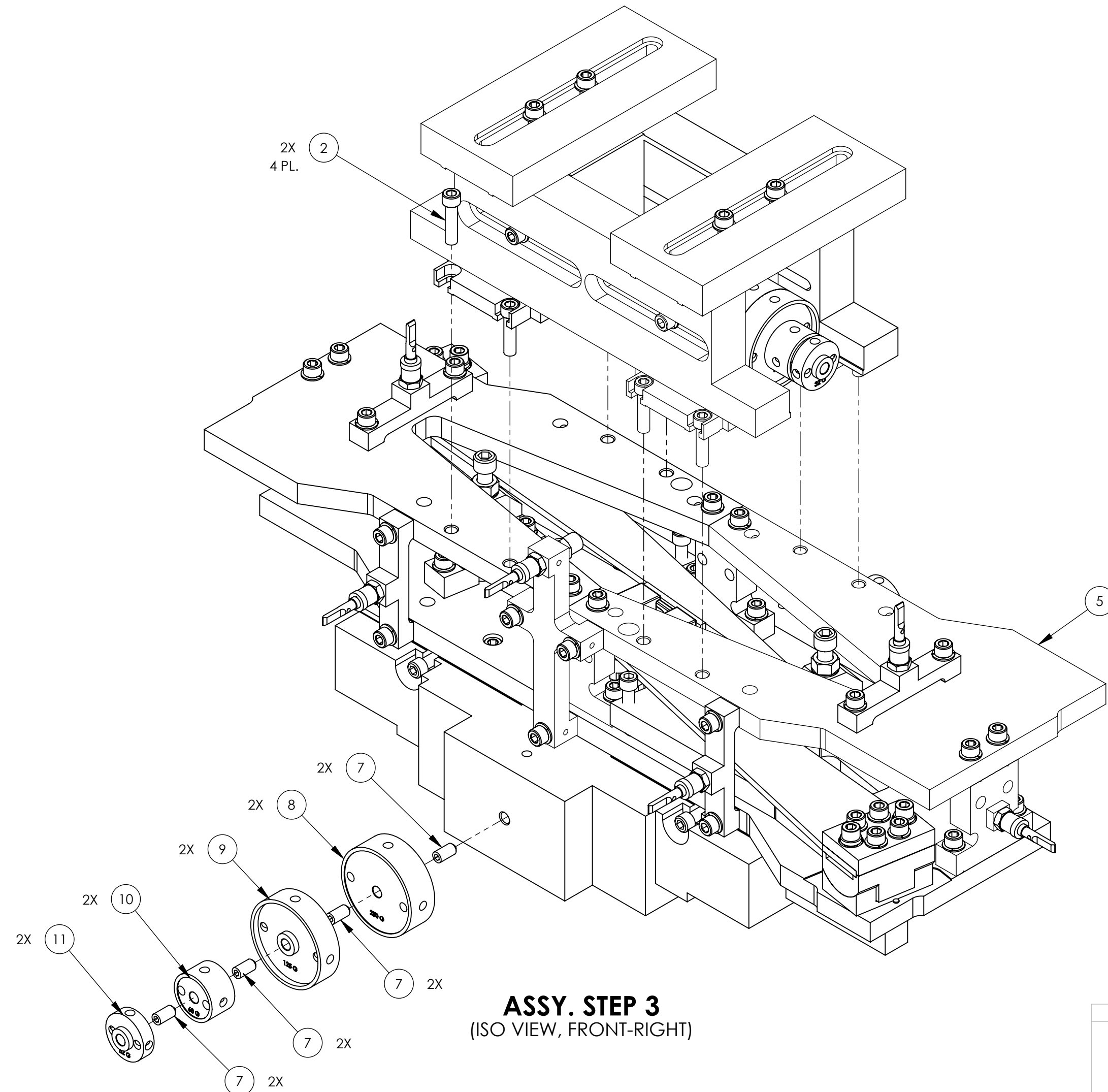
ASSY. STEP 1
(ISO VIEW, FRONT-RIGHT)



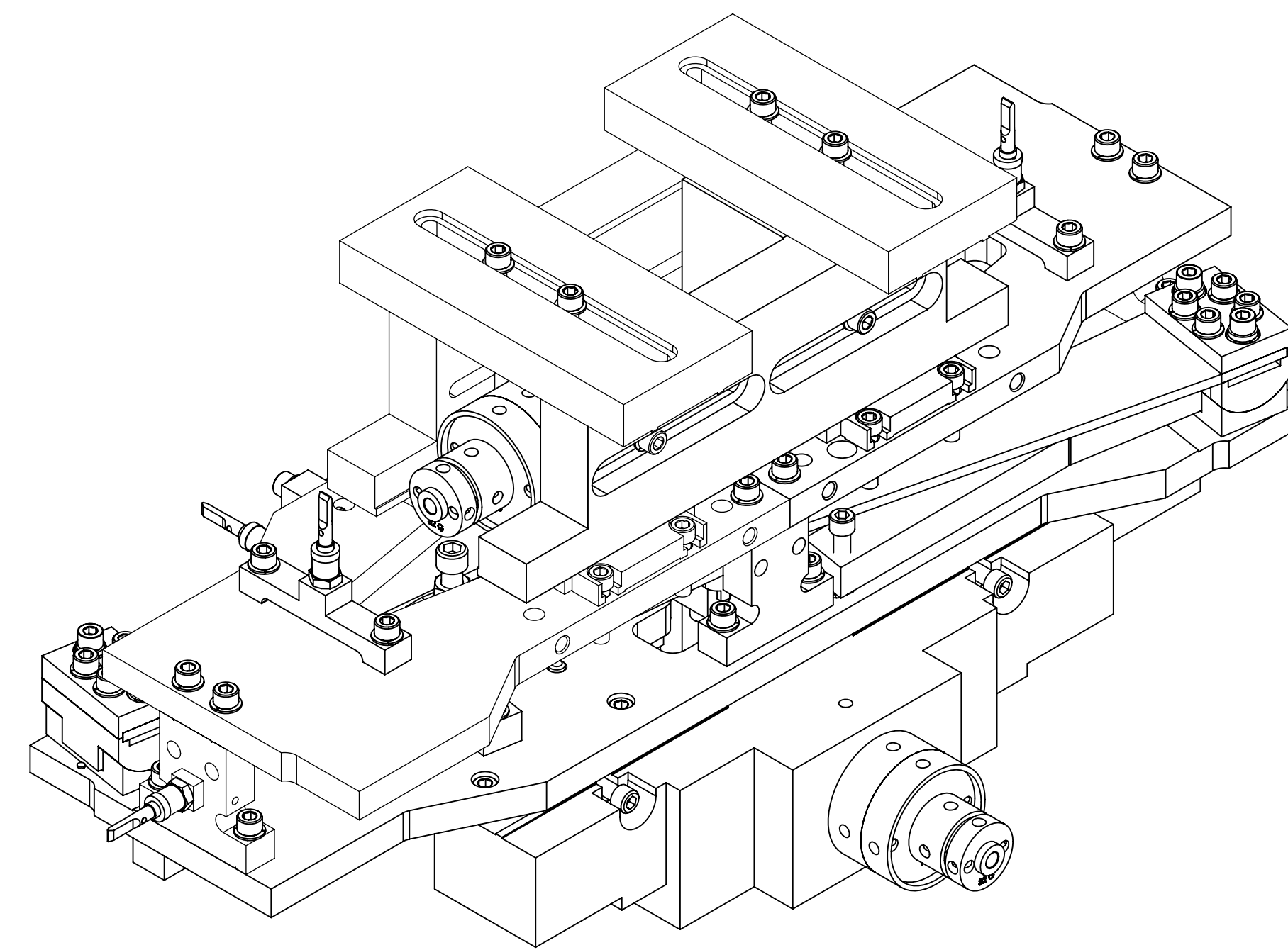
ASSY. STEP 1



ISO VIEW



ASSY. STEP 3
(ISO VIEW, FRONT-RIGHT)



ISO VIEW, REAR-LEFT

ITEM NO.	PART NUMBER	DESCRIPTION	MATERIAL	QTY.
11	D1200432-01	αLIGO TMS BALANCE WEIGHT, 31 G	304 SSSL	4
10	D1200432-02	αLIGO TMS BALANCE WEIGHT, 62 G	304 SSSL	4
9	D1200431-01	αLIGO TMS BALANCE WEIGHT, 125 G	304 SSSL	4
8	D1200431-02	αLIGO TMS BALANCE WEIGHT, 250 G	304 SSSL	4
7	D1100358	TMS TELESCOPE MASS ATTACHMENT SCREW	TITANIUM	16
6	WFV-25 UC COMPONENTS OR EQ.	.255 ID, .468 OD, .032 TH	18-8 SSSL	8
5	D1101527	αLIGO TMS MASS SECONDARY ASSEMBLY	N/A	1
4	D1200405	αLIGO TMS UPPER PITCH TRIM MASS	304 SSSL	2
3	D1101520	αLIGO TMS UPPER ROLL TRIM MASS	304 SSSL	2
2	C-2016-NA	SOCKET HEAD CAP SCREW, SHC, 1/4-20 x 1" L	Ag-PLATED 18-8 SSSL	16
1	D1101519	αLIGO TMS TOP ADD MASS TOWER	304 SSSL	2

NOTES AND TOLERANCES: (UNLESS OTHERWISE SPECIFIED)

MATERIAL N/A

FINISH N/A μinch

NEXT ASSY D1000549

LIGO CALIFORNIA INSTITUTE OF TECHNOLOGY
 MASSACHUSETTS INSTITUTE OF TECHNOLOGY

SYSTEM ADVANCED LIGO SUB-SYSTEM AOS

PART NAME αLIGO TMS MASS BALANCED ASSEMBLY

DESIGNER K. MAILAND 28 JUL 2011 SIZE DWG. NO. D DRAFTER C. CONLEY 26 MAR 2012 CHECKER SEE DCN SEE DCN APPROVAL SEE DCN SEE DCN

SCALE: NONE PROJECTION: SHEET 1 OF 1

A

D1101526 αLIGO TMS Mass Balanced Assembly - PART PDM REV. X-003 DRAWING PDM REV. X-008