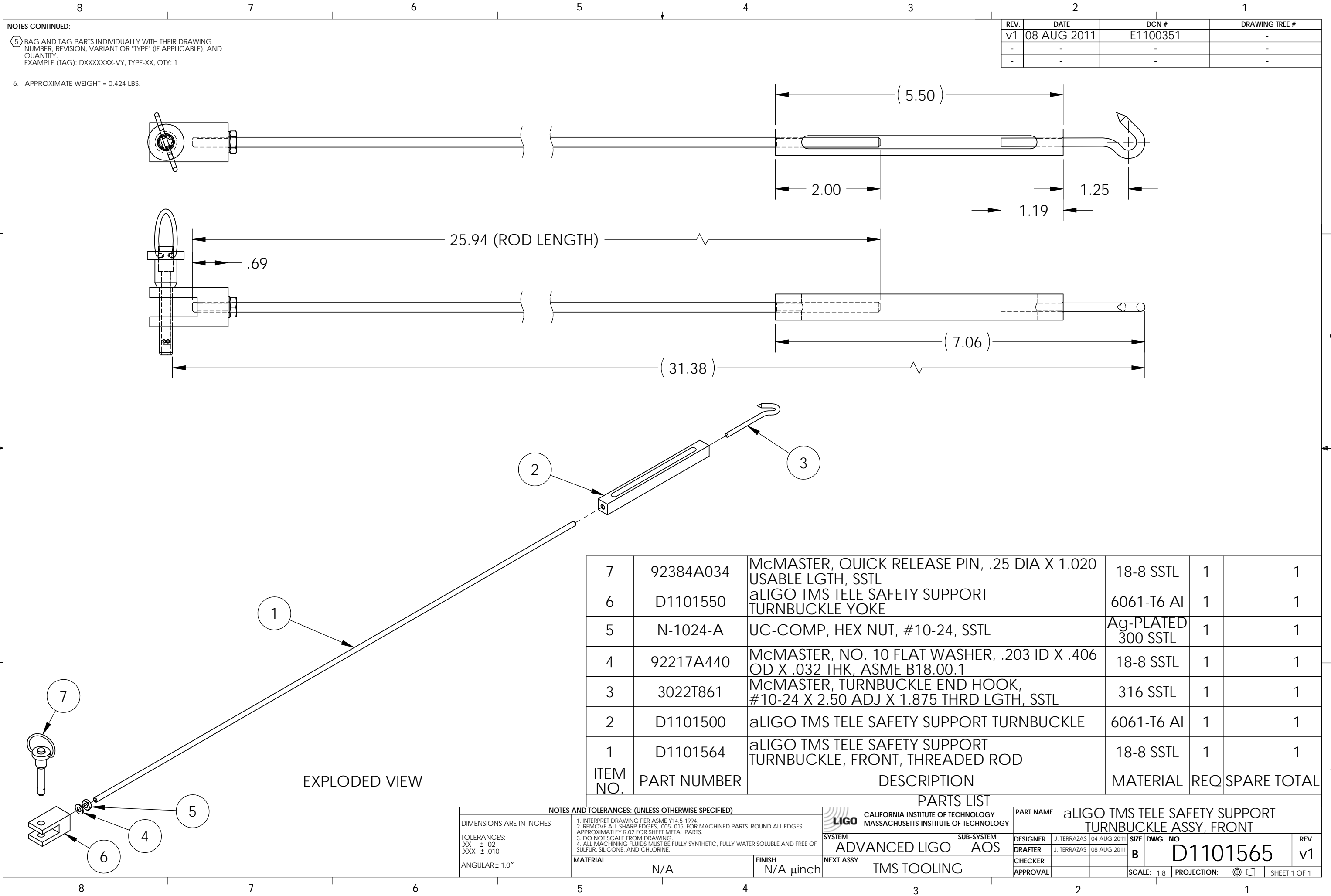


D1101565_aLIGO TMS TELE SAFETY SUPPORT TURNBUCKLE ASSY, FRONT, PART PDM REV: X-000, DRAWING PDM REV:



REV.	DATE	DCN #	DRAWING TREE #
v1	08 AUG 2011	E1100351	-
-	-	-	-
-	-	-	-

NOTES CONTINUED:
 5. BAG AND TAG PARTS INDIVIDUALLY WITH THEIR DRAWING NUMBER, REVISION, VARIANT OR "TYPE" (IF APPLICABLE), AND QUANTITY.
 EXAMPLE (TAG): DXXXXXX-VY, TYPE-XX, QTY: 1
 6. APPROXIMATE WEIGHT = 0.424 LBS.

ITEM NO.	PART NUMBER	DESCRIPTION	MATERIAL	REQ	SPARE	TOTAL
7	92384A034	McMASTER, QUICK RELEASE PIN, .25 DIA X 1.020 USABLE LGTH, SSTL	18-8 SSTL	1		1
6	D1101550	aLIGO TMS TELE SAFETY SUPPORT TURNBUCKLE YOKE	6061-T6 Al	1		1
5	N-1024-A	UC-COMP, HEX NUT, #10-24, SSTL	Ag-PLATED 300 SSTL	1		1
4	92217A440	McMASTER, NO. 10 FLAT WASHER, .203 ID X .406 OD X .032 THK, ASME B18.00.1	18-8 SSTL	1		1
3	3022T861	McMASTER, TURNBUCKLE END HOOK, #10-24 X 2.50 ADJ X 1.875 THRD LGTH, SSTL	316 SSTL	1		1
2	D1101500	aLIGO TMS TELE SAFETY SUPPORT TURNBUCKLE	6061-T6 Al	1		1
1	D1101564	aLIGO TMS TELE SAFETY SUPPORT TURNBUCKLE, FRONT, THREADED ROD	18-8 SSTL	1		1

EXPLODED VIEW

NOTES AND TOLERANCES: (UNLESS OTHERWISE SPECIFIED)

DIMENSIONS ARE IN INCHES
 TOLERANCES:
 .XX ± .02
 .XXX ± .010
 ANGULAR ± 1.0°

1. INTERPRET DRAWING PER ASME Y14.5-1994.
 2. REMOVE ALL SHARP EDGES, .005-.015, FOR MACHINED PARTS. ROUND ALL EDGES APPROXIMATELY R.02 FOR SHEET METAL PARTS.
 3. DO NOT SCALE FROM DRAWING.
 4. ALL MACHINING FLUIDS MUST BE FULLY SYNTHETIC, FULLY WATER SOLUBLE AND FREE OF SULFUR, SILICONE, AND CHLORINE.

LIGO CALIFORNIA INSTITUTE OF TECHNOLOGY MASSACHUSETTS INSTITUTE OF TECHNOLOGY

SYSTEM: ADVANCED LIGO SUB-SYSTEM: AOS

PART NAME: aLIGO TMS TELE SAFETY SUPPORT TURNBUCKLE ASSY, FRONT

DESIGNER: J. TERRAZAS 04 AUG 2011
 DRAFTER: J. TERRAZAS 08 AUG 2011

CHECKER: APPROVAL:

SCALE: 1:8 PROJECTION: SHEET 1 OF 1

SIZE: DWG. NO. **D1101565** REV. **v1**

MATERIAL: N/A FINISH: N/A μinch NEXT ASSY: TMS TOOLING