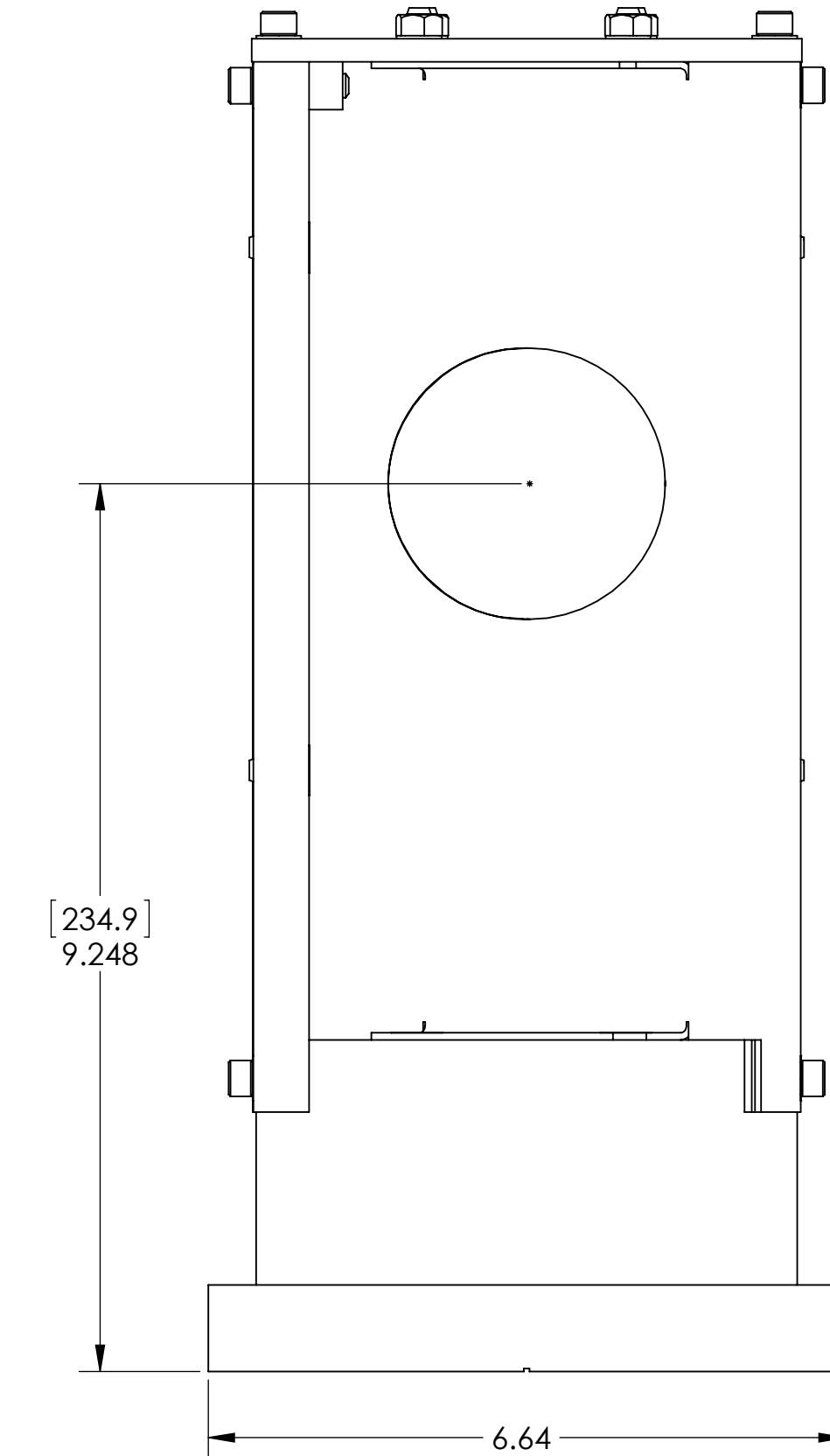
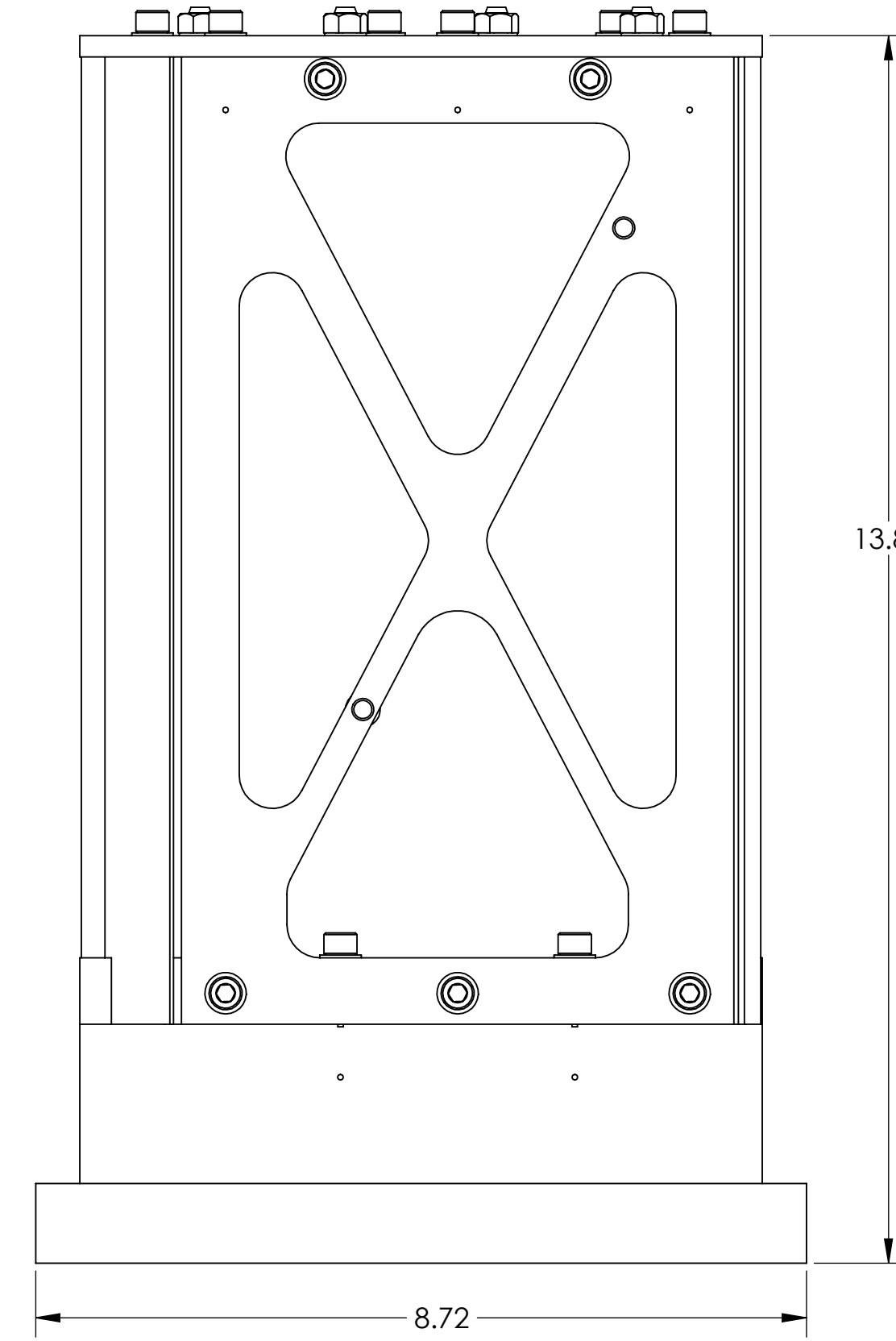
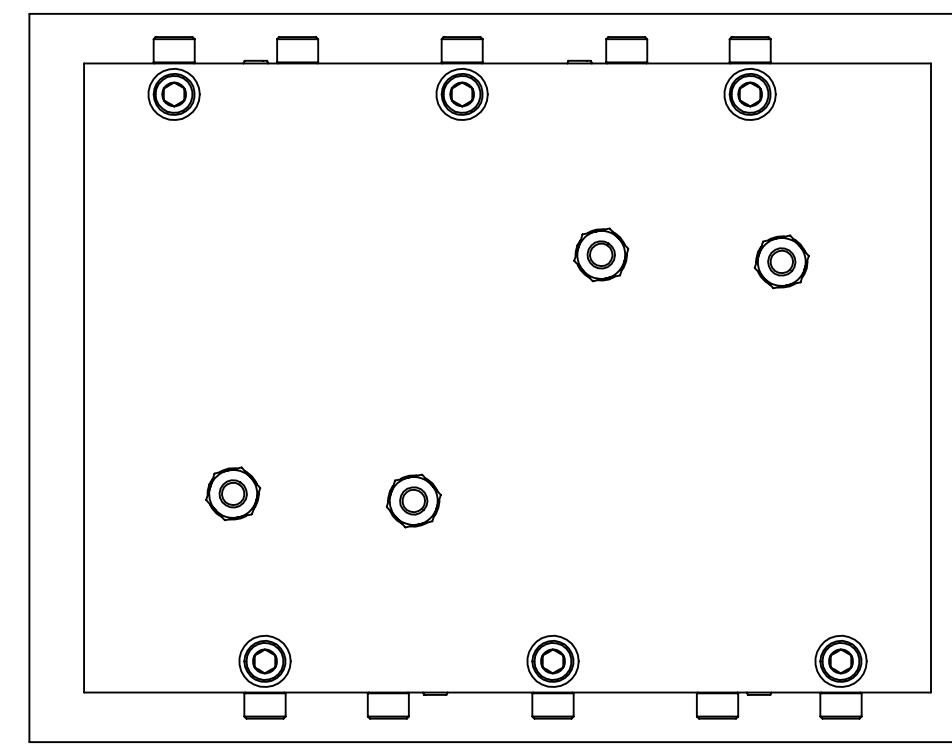
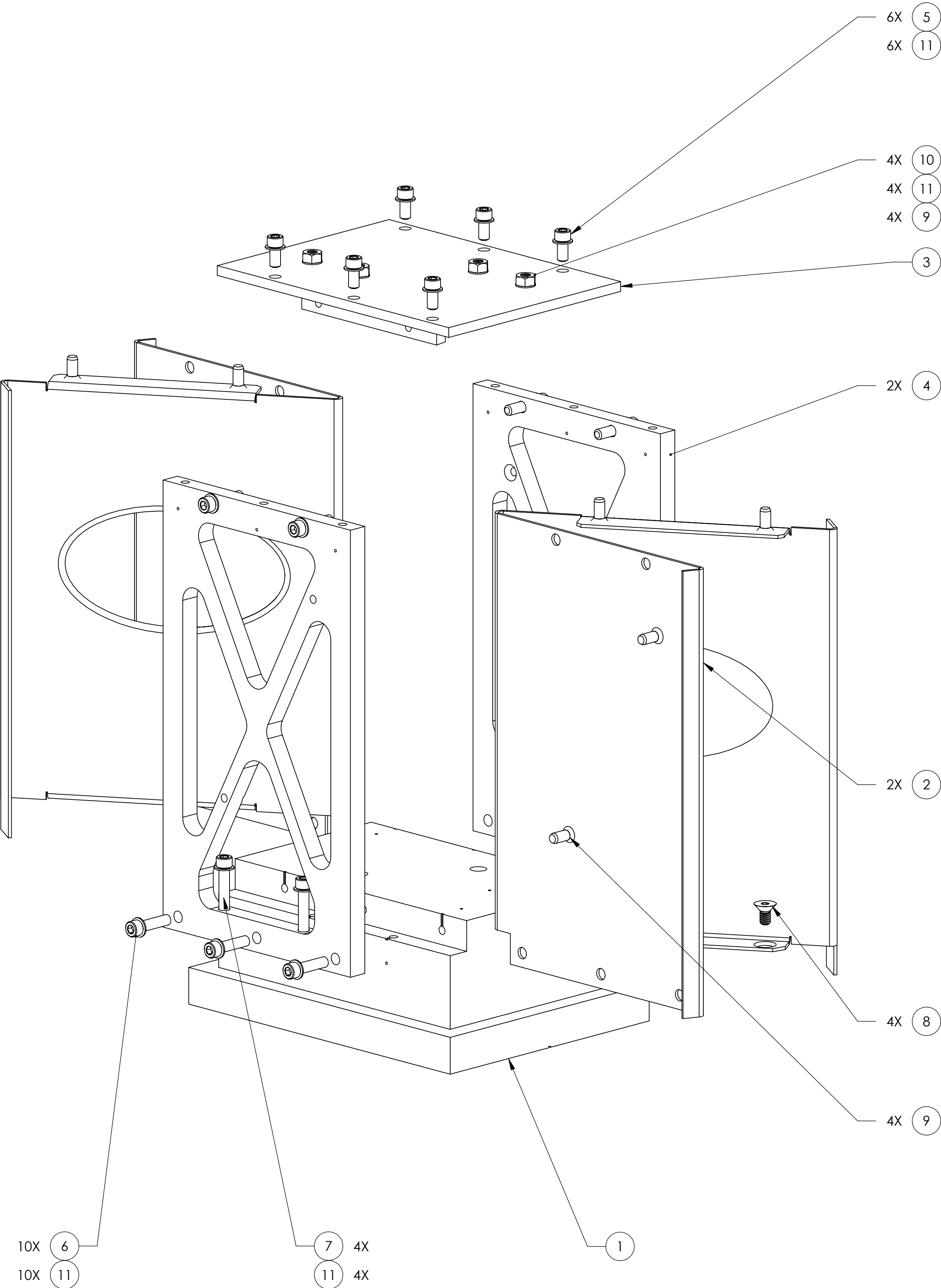


NOTES:

APPROXIMATE WEIGHT = 20.43 LBS.



**D1101599-01 AS SHOWN  
SR2 AR BAF AT L1**

REV.	DATE	DCN #	DRAWING TREE #
v1	26 Aug. 2011	E1100836	E1100837
v2	28 MAR 2012	E1100836	

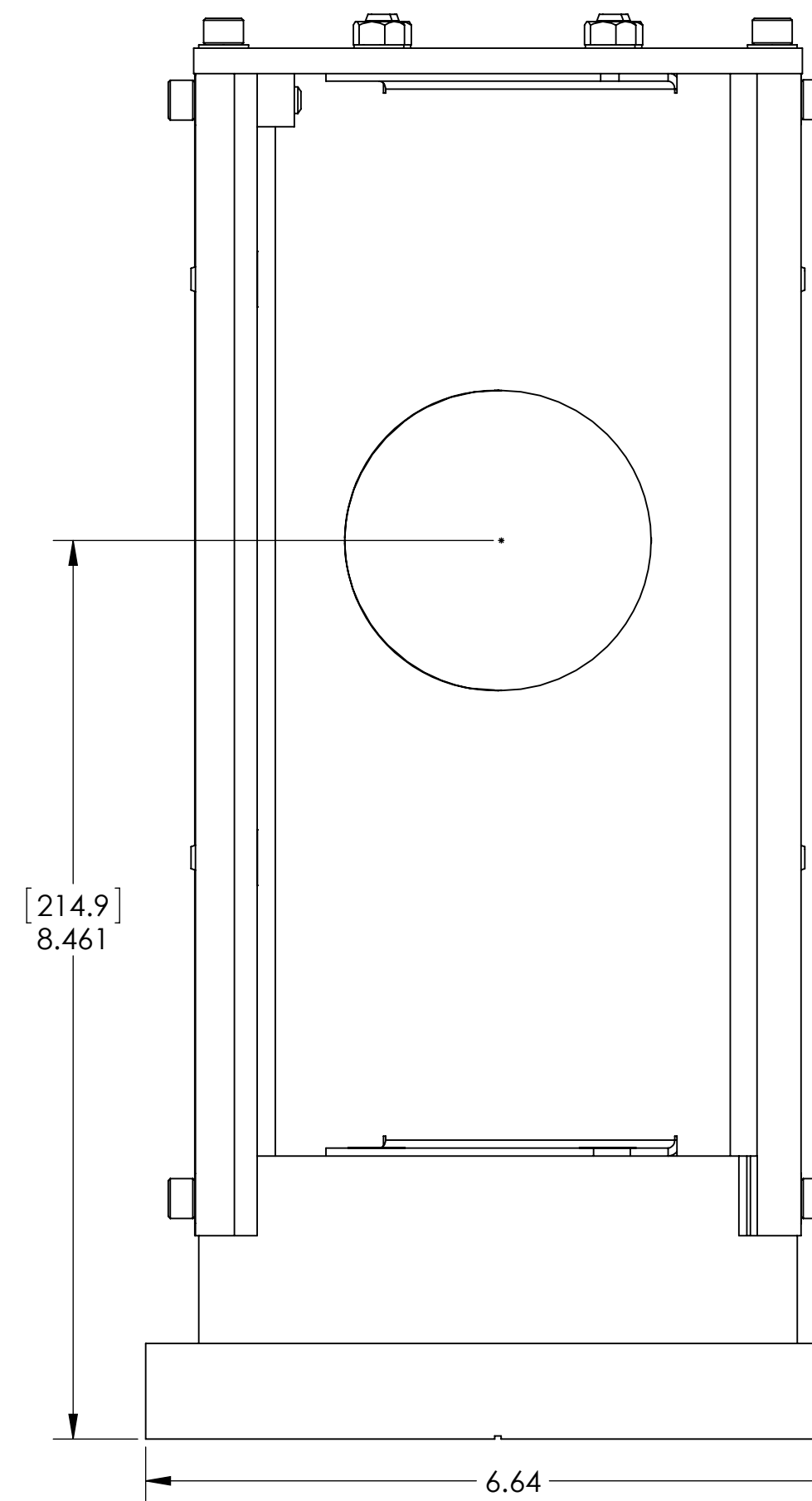
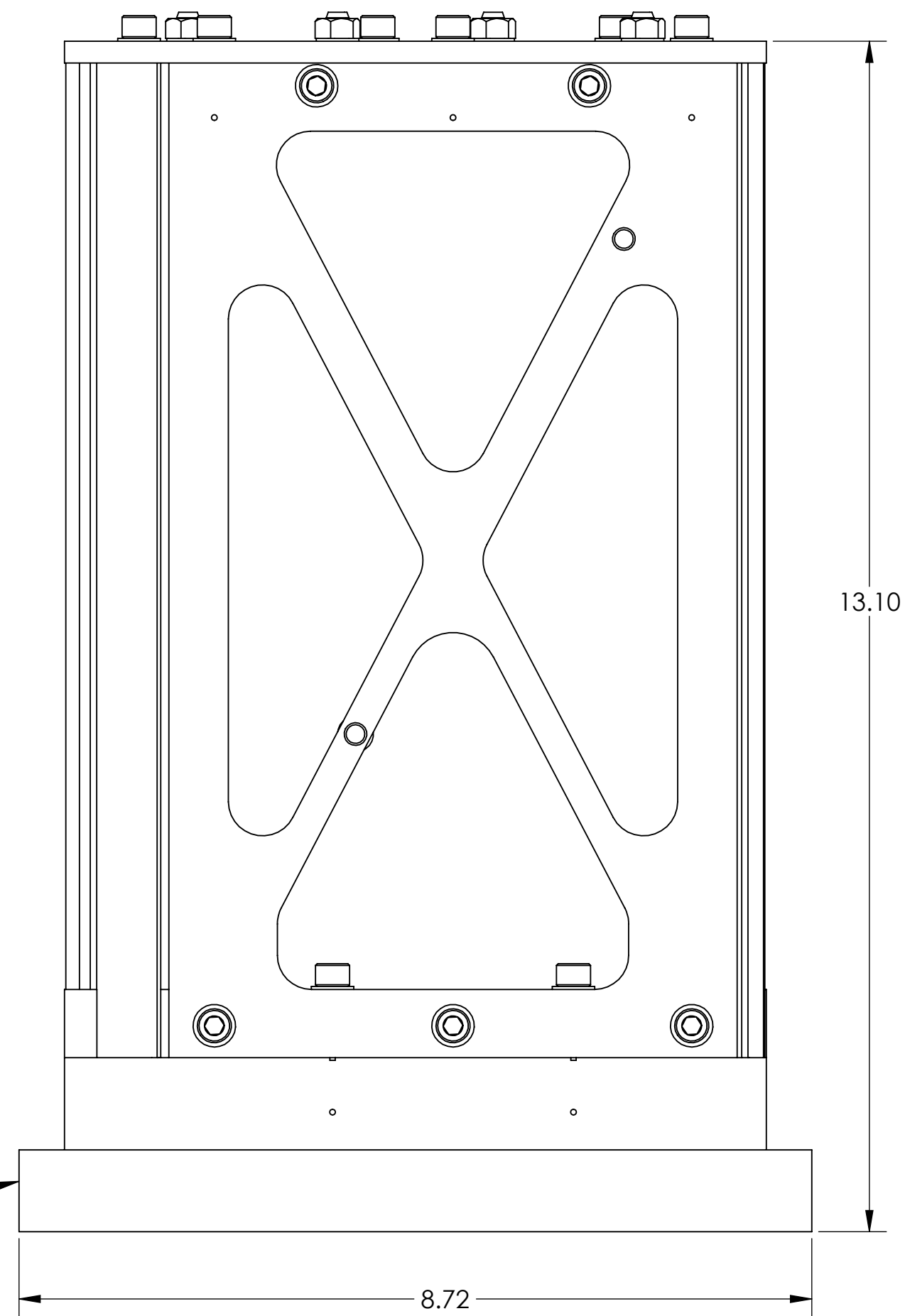
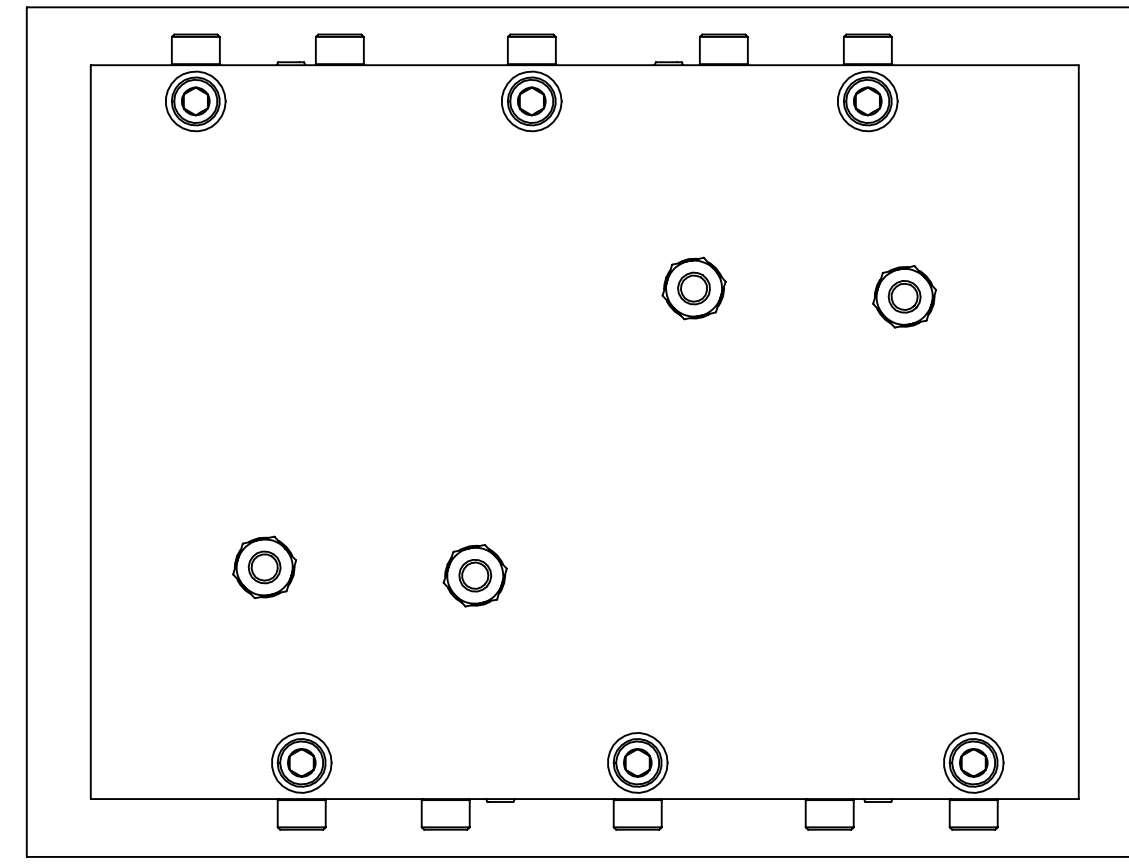
ITEM NO.	PART NUMBER	DESCRIPTION	MATERIAL	DRAWING/QTY.	TOTAL
11	WF-25	FLAT WASHER 1/4 SCREW SIZE	18-8 SSTL	24	0
10	N-2520-A	HEX NUT 1/4-20	Ag-PLATED 300 SSTL	4	0
9	FA-2010-N	FLAT HEAD SOCKET CAP SCREW, 1/4"-20 THRD, 5/8" L	18-8 SSTL	8	0
8	94518A510	Flat, SHCS, .25-20 x .50 lg. (MS24671-28)	300 SSTL	4	0
7	C-2018-N	SOCKET HEAD CAP SCREW, SHC, 1/4-20 x 1.125" L	18-8 SSTL	4	0
6	C-2016-N	SOCKET HEAD CAP SCREW, SHC, 1/4-20 x 1" L	18-8 SSTL	10	0
5	C-2008-N	SOCKET HEAD CAP SCREW, SHC, 1/4-20 x 1/2" L	18-8 SSTL	6	0
4	D1101602	ALIGO AOS, HAM SCRAPER BAFFLE, SUPPORT WALL	6061-T6 Al	2	0
3	D1101600	ALIGO AOS, HAM SCRAPER BAFFLE TOP	6061-T6 Al	1	0
2	D1101605	ALIGO AOS, HAM SCRAPER BAFFLE SKIN	14 GAUGE 304 SSTL	2	0
1	D1101608-01	ALIGO AOS, HAM SCRAPER BAFFLE BASE	6061-T6 Al	1	0

NOTES AND TOLERANCES: (UNLESS OTHERWISE SPECIFIED)	
DIMENSIONS ARE IN INCHES	
TOLERANCES: .XX ± N/A .XXX ± N/A	
ANGULAR ± N/A °	
MATERIAL	N/A
FINISH	N/A μinch

CALIFORNIA INSTITUTE OF TECHNOLOGY MASSACHUSETTS INSTITUTE OF TECHNOLOGY				PART NAME	
SYSTEM ADVANCED LIGO		SUB-SYSTEM AOS		ALIGO AOS, HAM SCRAPER BAFFLE ASSY	
DESIGNER	M.HILLARD	16 Aug. 2011	SIZE	DWG. NO.	
DRAFTER	M.HILLARD	26 Aug. 2011	D	D1101599-01	
CHECKER	-	26 Aug. 2011			
APPROVAL	-	26 Aug. 2011	SCALE:	1:1.75	PROJECTION:
			SHEET 1 OF 5		


D1101599-01 AOS SR2 AR BAF ASSY PART FROM REV. X.055 DRAWING FROM REV. X.026

APPROXIMATE WEIGHT = 19.06 LBS.




**D1101599-02 AS SHOWN  
SR2 AR BAF AT H1  
HART BAF-1 AT H2  
HART BAF-2 AT H2**

ITEM NO.	PART NUMBER	DESCRIPTION	MATERIAL	QTY	TOTAL
11	WF-25	FLAT WASHER 1/4 SCREW SIZE	18-8 SSTL	24	0
10	N-2520-A	HEX NUT 1/4-20	Ag-PLATED 300 SSTL	4	0
9	FA-2010-N	FLAT HEAD SOCKET CAP SCREW, 1/4"-20 THRD, 5/8" L	18-8 SSTL	8	0
8	FA-2008-N	Flat, SHCS, .25-20 x .50 lg. (MS24671-28)	300 SSTL	4	0
7	C-2018-N	SOCKET HEAD CAP SCREW, SHC, 1/4-20 x 1.125" L	18-8 SSTL	4	0
6	C-2016-N	SOCKET HEAD CAP SCREW, SHC, 1/4-20 x 1" L	18-8 SSTL	10	0
5	C-2008-N	SOCKET HEAD CAP SCREW, SHC, 1/4-20 x 1/2" L	18-8 SSTL	6	0
4	D1101602	ALIGO AOS, HAM SCRAPER BAFFLE, SUPPORT WALL	6061-T6 Al	2	0
3	D1101600	ALIGO AOS, HAM SCRAPER BAFFLE TOP	6061-T6 Al	1	0
2	D1101605	ALIGO AOS, HAM SCRAPER BAFFLE SKIN	14 GAUGE 304 SSTL	2	0
1	D1101608-02	ALIGO AOS, HAM SCRAPER BAFFLE BASE(SR2 AR H1)	6061-T6 Al	1	0

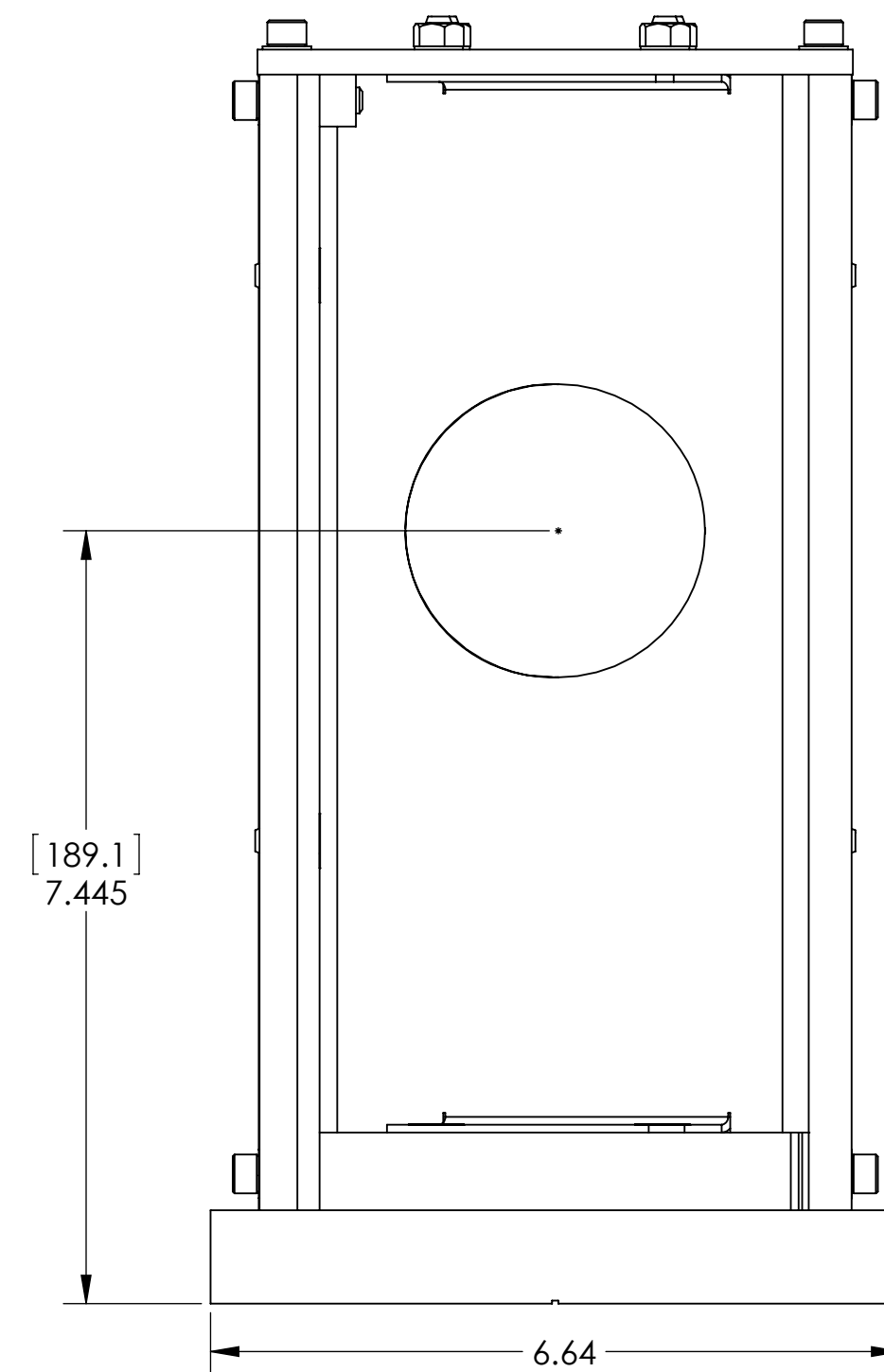
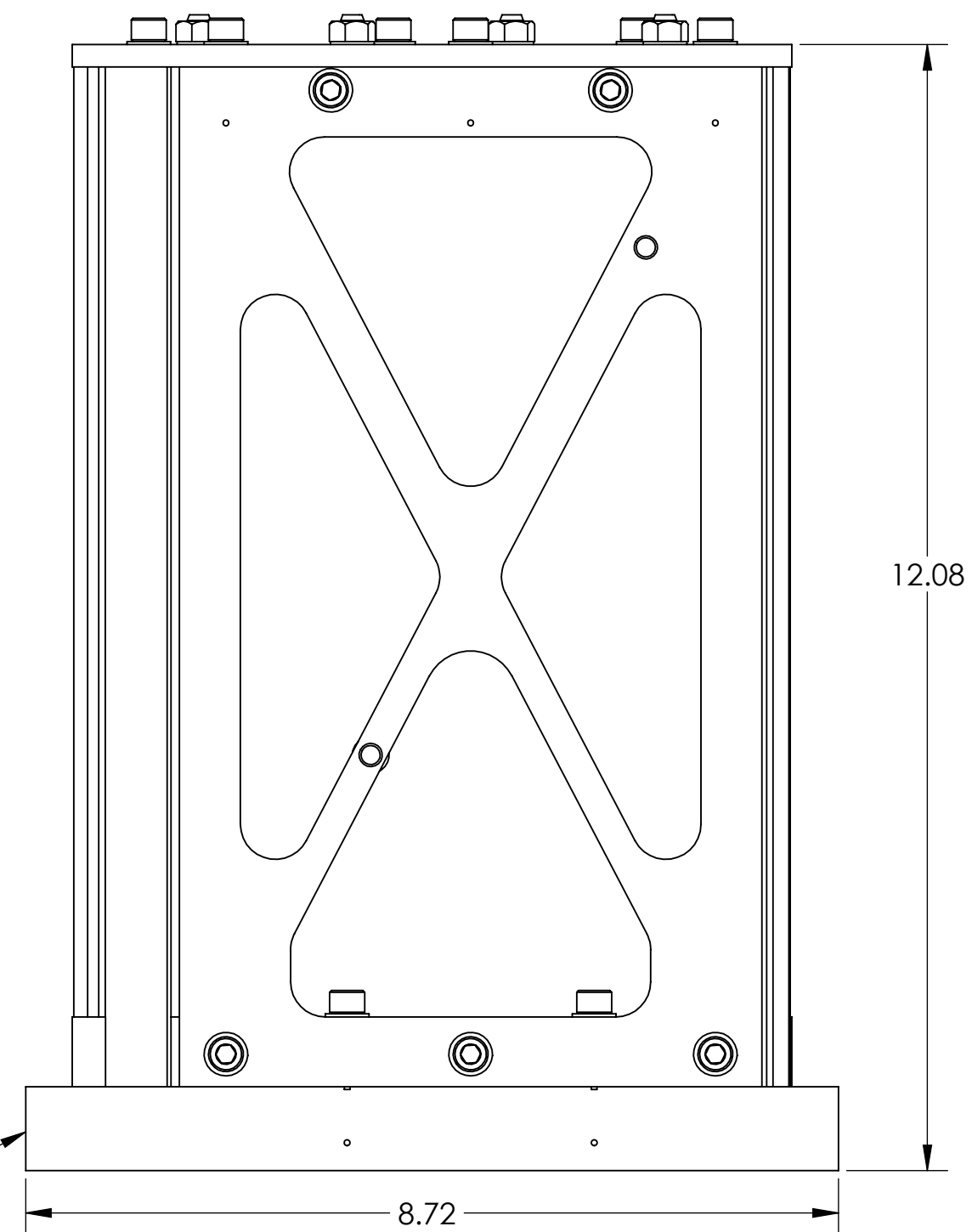
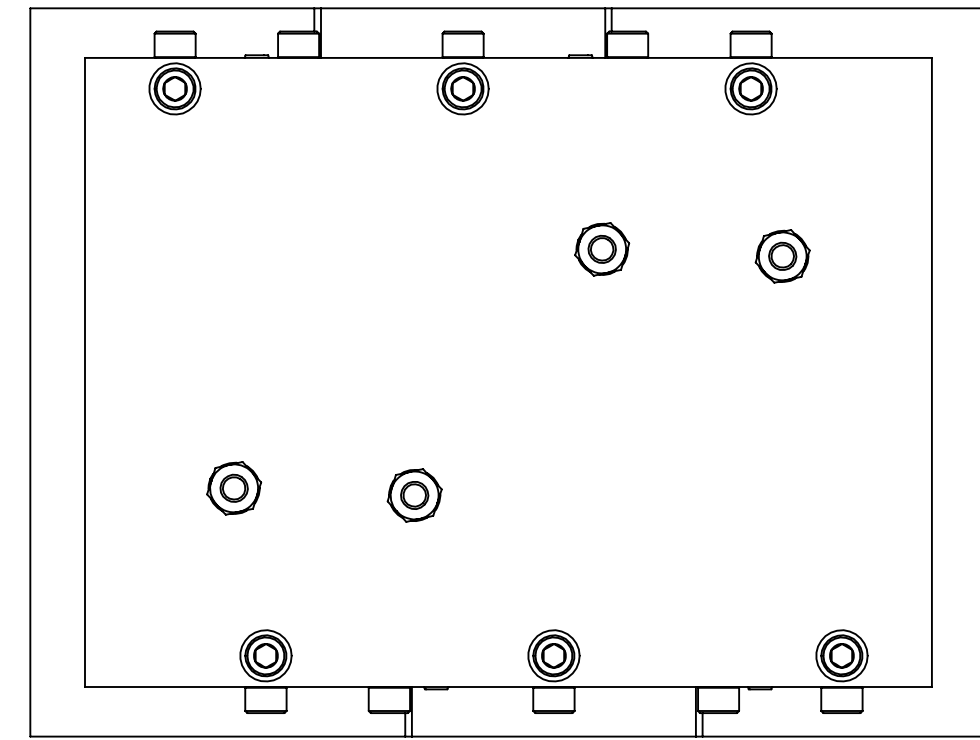

**CALIFORNIA INSTITUTE OF TECHNOLOGY**  
**MASSACHUSETTS INSTITUTE OF TECHNOLOGY**

SIZE DWG. NO. **D1101599-02** REV. **v2**

SCALE: 1:1.5 PROJECTION:  SHEET 2 OF 5


D1101599-02 AOS (SR2 AR) HARTMAN BAFFLE ASSY, PART FROM REV. X.035, DRAWING FROM REV. X.026

APPROXIMATE WEIGHT = 17.29 LBS.




**D1101599-03 AS SHOWN  
SR2 AR BAF AT H2**

ITEM NO.	PART NUMBER	DESCRIPTION	MATERIAL	QTY	TOTAL
11	WF-25	FLAT WASHER 1/4 SCREW SIZE	18-8 SSSL	24	0
10	N-2520-A	HEX NUT 1/4-20	Ag-PLATED 300 SSSL	4	0
9	FA-2010-N	FLAT HEAD SOCKET CAP SCREW, 1/4"-20 THRD, 5/8" L	18-8 SSSL	8	0
8	FA-2008-N	Flat, SHCS, .25-20 x .50 lg. (MS24671-28)	300 SSSL	4	0
7	C-2018-N	SOCKET HEAD CAP SCREW, SHC, 1/4-20 x 1.125" L	18-8 SSSL	4	0
6	C-2016-N	SOCKET HEAD CAP SCREW, SHC, 1/4-20 x 1" L	18-8 SSSL	10	0
5	C-2008-N	SOCKET HEAD CAP SCREW, SHC, 1/4-20 x 1/2" L	18-8 SSSL	6	0
4	D1101602	ALIGO AOS, HAM SCRAPER BAFFLE, SUPPORT WALL	6061-T6 Al	2	0
3	D1101600	ALIGO AOS, HAM SCRAPER BAFFLE TOP	6061-T6 Al	1	0
2	D1101605	ALIGO AOS, HAM SCRAPER BAFFLE SKIN	14 GAUGE 304 SSSL	2	0
1	D1101608-03	ALIGO AOS, HAM SCRAPER BAFFLE BASE(SR2 AR H2)	6061-T6 Al	1	0
PARTS LIST					

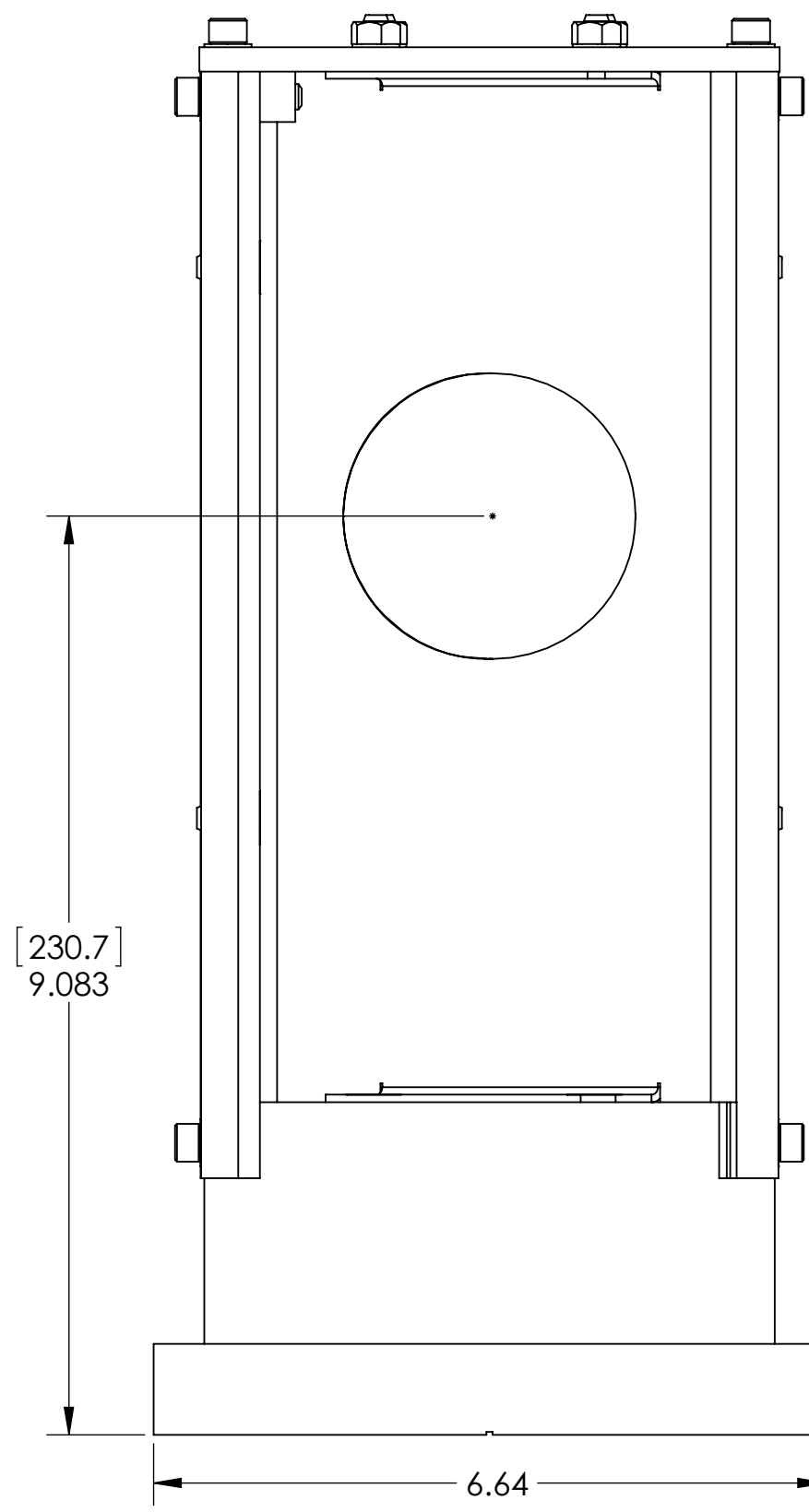
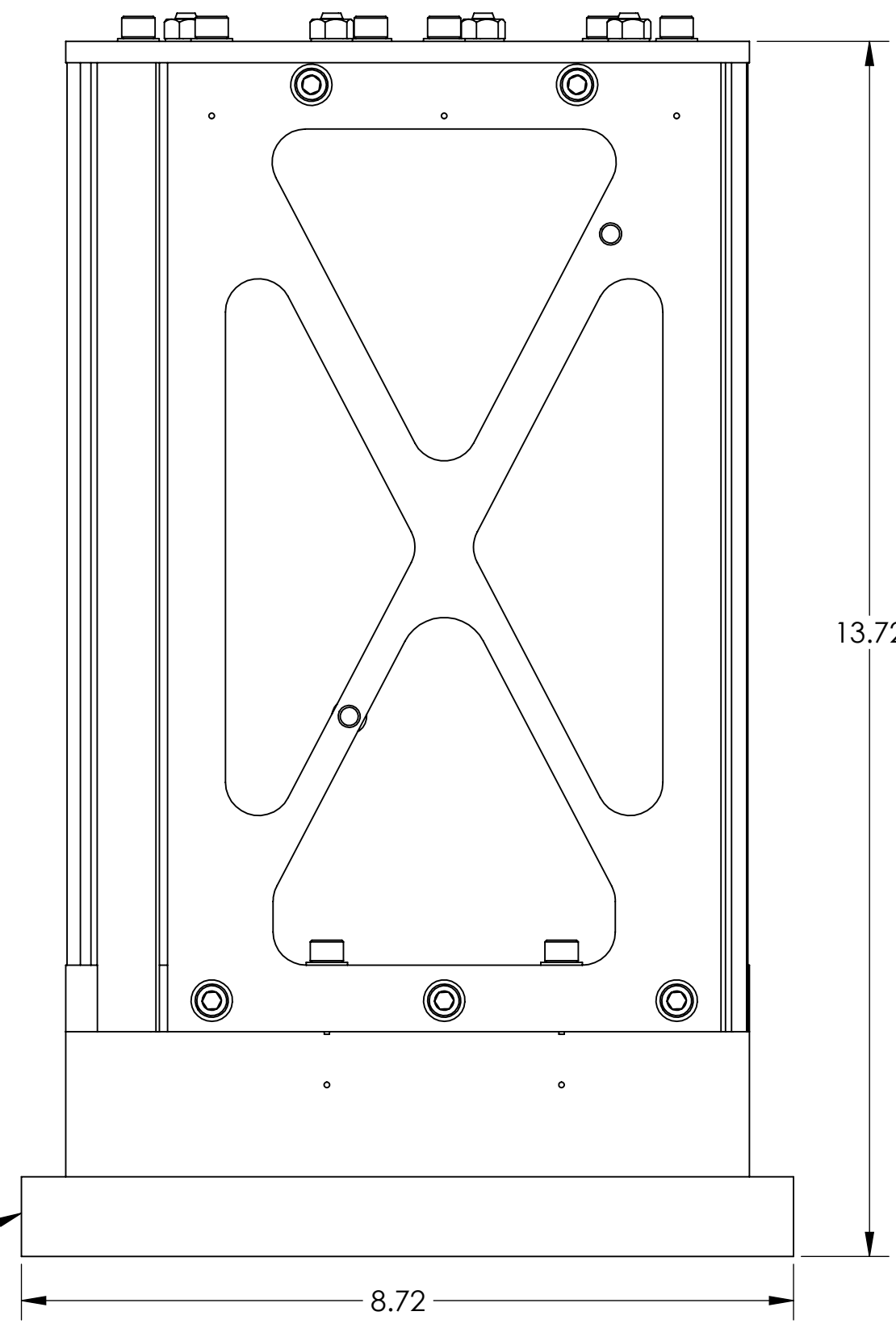
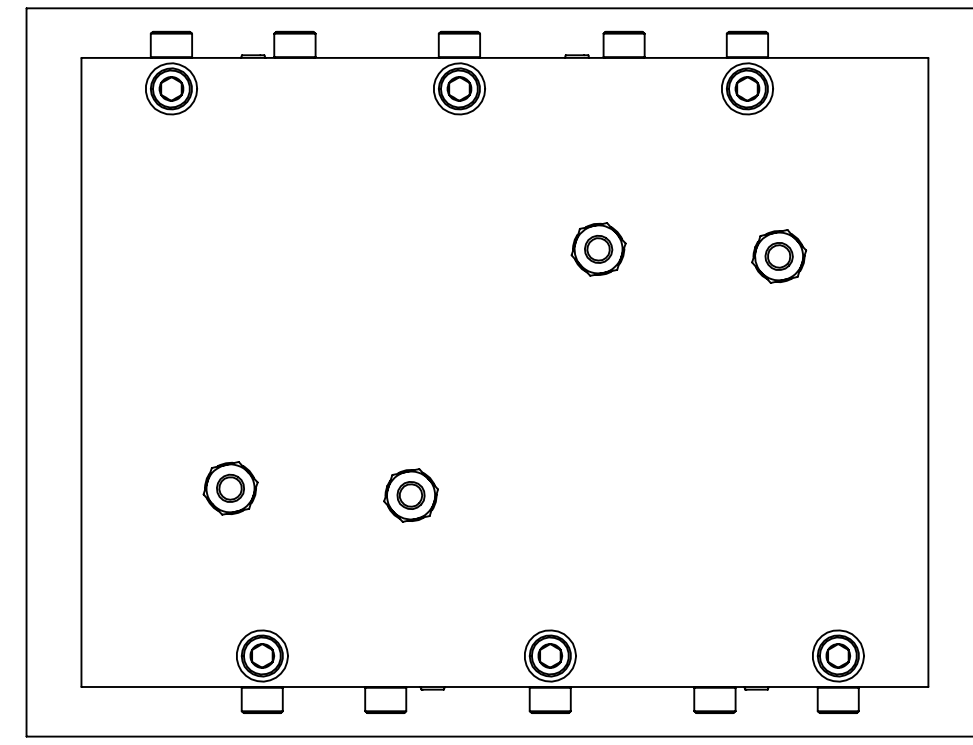

**CALIFORNIA INSTITUTE OF TECHNOLOGY  
MASSACHUSETTS INSTITUTE OF TECHNOLOGY**

SIZE DWG. NO. REV.  
**D D1101599-03 v2**

SCALE: 1:1.75 PROJECTION:  SHEET 3 OF 5

D1101599-03 AOS (SR2 AR) - HAM SCRAPER BAFFLE ASSY, PART FROM REV. X-035, DRAWING FROM REV. X-026

APPROXIMATE WEIGHT = 20.15 LBS.



**D1101599-04 AS SHOWN  
HART BAF-1 AT L1  
HART BAF-2 AT L1**

ITEM NO.	PART NUMBER	DESCRIPTION	MATERIAL	QTY	TOTAL
11	WF-25	FLAT WASHER 1/4 SCREW SIZE	18-8 SSSL	24	0
10	N-2520-N	HEX NUT 1/4-20	Ag-PLATED 300 SSSL	4	0
9	FA-2010-N	FLAT HEAD SOCKET CAP SCREW, 1/4"-20 THRD, 5/8" L	18-8 SSSL	8	0
8	FA-2008-N	Flat, SHCS, .25-20 x .50 lg. (MS24671-28)	300 SSSL	4	0
7	C-2018-N	SOCKET HEAD CAP SCREW, SHC, 1/4-20 x 1.125" L	18-8 SSSL	4	0
6	C-2016-N	SOCKET HEAD CAP SCREW, SHC, 1/4-20 x 1" L	18-8 SSSL	10	0
5	C-2008-N	SOCKET HEAD CAP SCREW, SHC, 1/4-20 x 1/2" L	18-8 SSSL	6	0
4	D1101602	αLIGO AOS, HAM SCRAPER BAFFLE, SUPPORT WALL	6061-T6 AI	2	0
3	D1101600	αLIGO AOS, HAM SCRAPER BAFFLE TOP	6061-T6 AI	1	0
2	D1101605	αLIGO AOS, HAM SCRAPER BAFFLE SKIN	14 GAUGE 304 SSSL	2	0
1	D1101608-04	αLIGO AOS, HAM SCRAPER BAFFLE BASE(HARTMANN L1)	6061-T6 AI	1	0
PARTS LIST					

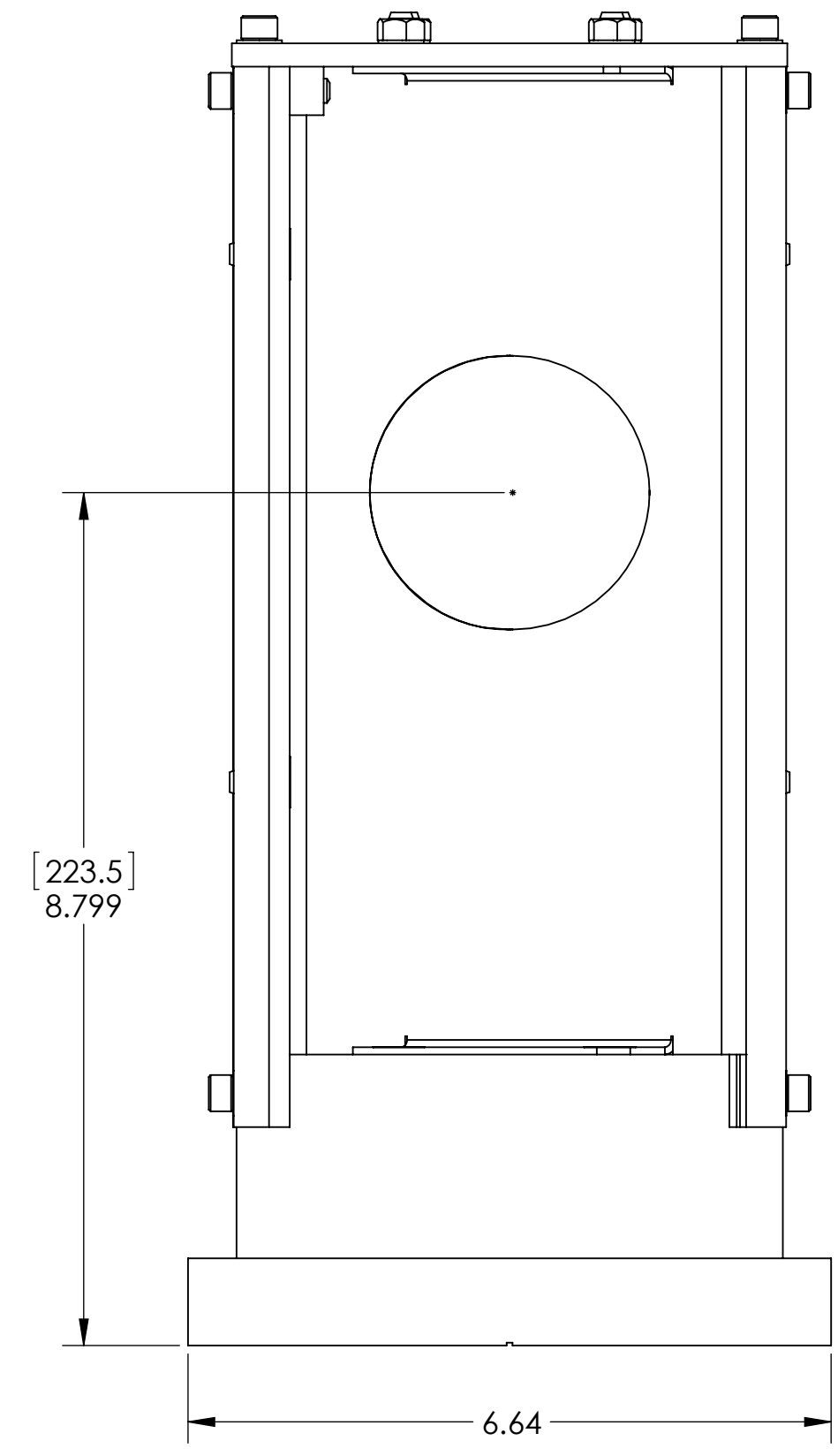
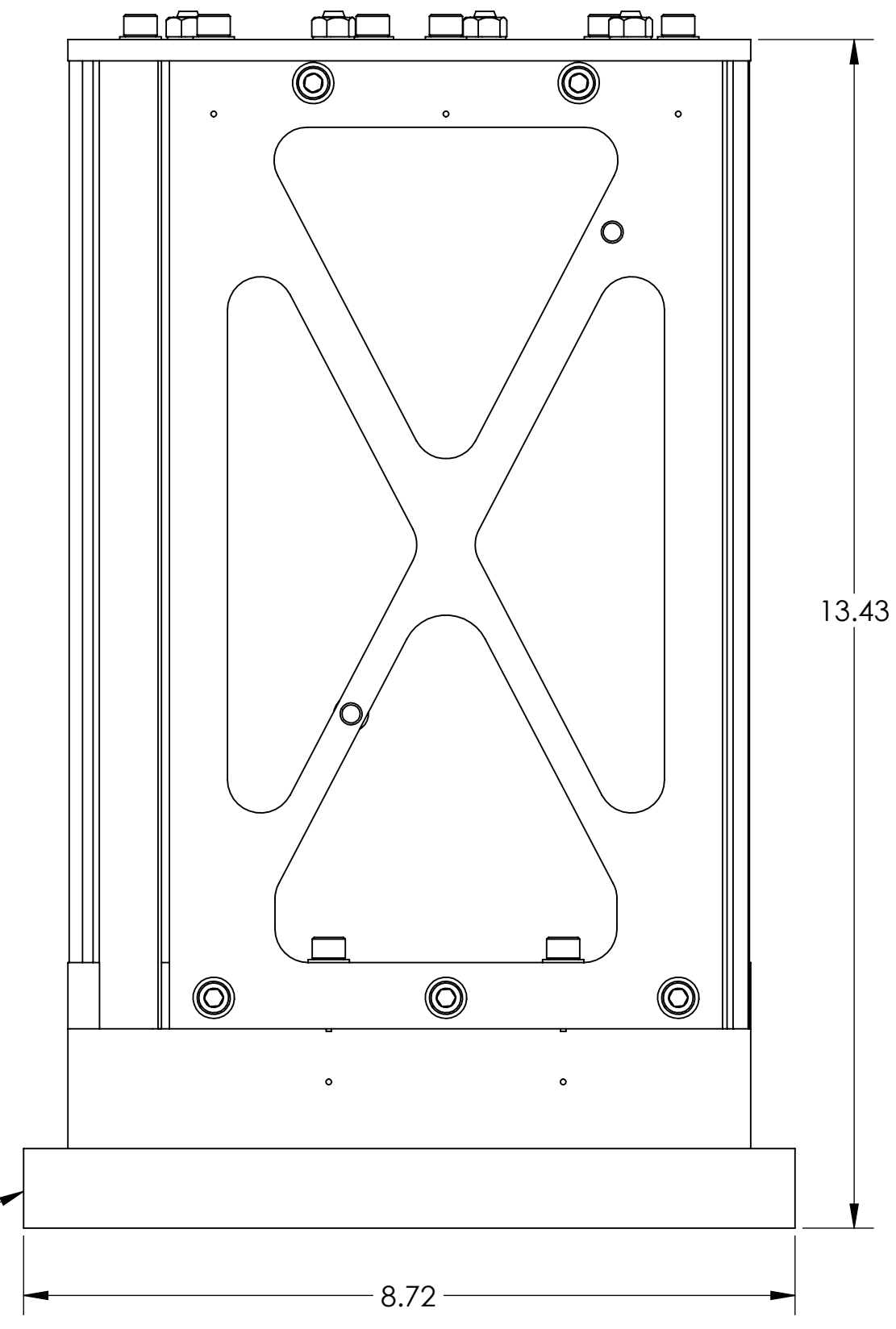
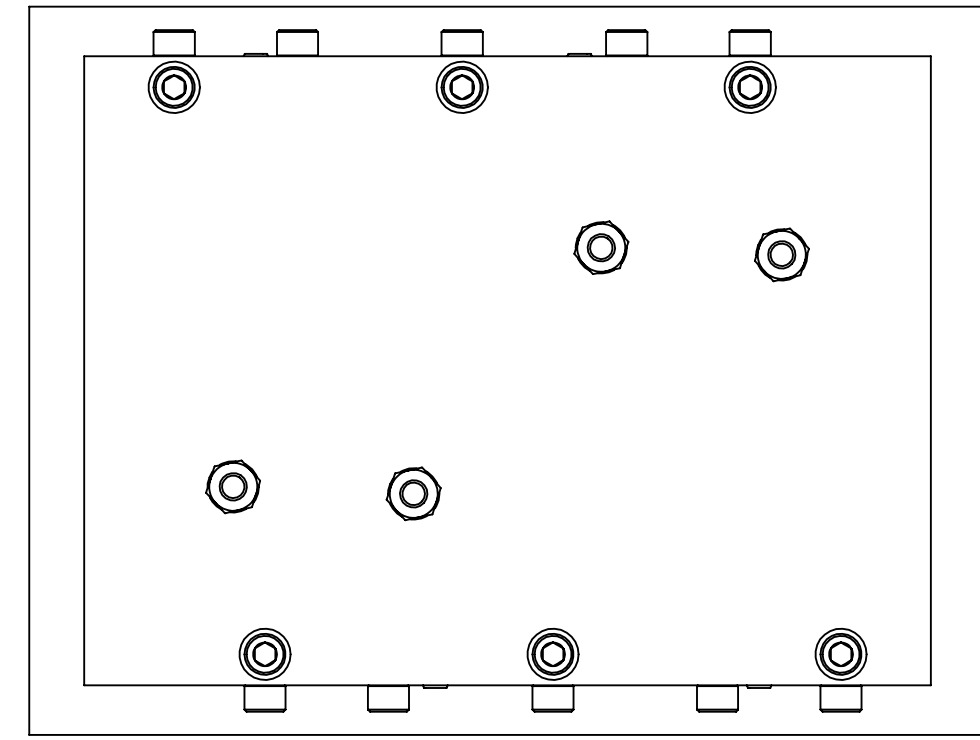
**LIGO** CALIFORNIA INSTITUTE OF TECHNOLOGY  
MASSACHUSETTS INSTITUTE OF TECHNOLOGY

SIZE DWG. NO. REV.  
**D** **D1101599-04** v2

SCALE: 1:1.75 PROJECTION: SHEET 4 OF 5

D1101599-04 AOS (BOM) - HARTMANN BAFFLE ASSY, PART PDM REV: X.035, DRAWING PDM REV: X.026

APPROXIMATE WEIGHT = 19.65 LBS.



**D1101599-05 AS SHOWN  
HART BAF-1 AT H1  
HART BAF-2 AT H1**

ITEM NO.	PART NUMBER	DESCRIPTION	MATERIAL	QTY	TOTAL
11	WF-25	FLAT WASHER 1/4 SCREW SIZE	18-8 SSSL	24	0
10	N-2520-N	HEX NUT 1/4-20	Ag-PLATED 300 SSSL	4	0
9	FA-2010-N	FLAT HEAD SOCKET CAP SCREW, 1/4"-20 THRD, 5/8" L	18-8 SSSL	8	0
8	FA-2008-N	Flat, SHCS, .25-20 x .50 lg. (MS24671-28)	300 SSSL	4	0
7	C-2018-N	SOCKET HEAD CAP SCREW, SHC, 1/4-20 x 1.125" L	18-8 SSSL	4	0
6	C-2016-N	SOCKET HEAD CAP SCREW, SHC, 1/4-20 x 1" L	18-8 SSSL	10	0
5	C-2008-N	SOCKET HEAD CAP SCREW, SHC, 1/4-20 x 1/2" L	18-8 SSSL	6	0
4	D1101602	ALIGO AOS, HAM SCRAPER BAFFLE, SUPPORT WALL	6061-T6 Al	2	0
3	D1101600	ALIGO AOS, HAM SCRAPER BAFFLE TOP	6061-T6 Al	1	0
2	D1101605	ALIGO AOS, HAM SCRAPER BAFFLE SKIN	14 GAUGE 304 SSSL	2	0
1	D1101608-05	ALIGO AOS, HAM SCRAPER BAFFLE BASE(HARTMANN H1)	6061-T6 Al	1	0
		<b>PARTS LIST</b>			

**LIGO** CALIFORNIA INSTITUTE OF TECHNOLOGY  
MASSACHUSETTS INSTITUTE OF TECHNOLOGY

SIZE DWG. NO. **D1101599-05** REV. **v2**

SCALE: 1:1.75 PROJECTION: SHEET 5 OF 5

D1101599-05-001-HARTMANN BAFFLE ASSY, PART FROM REV. X.055, DRAWING FROM REV. X.026