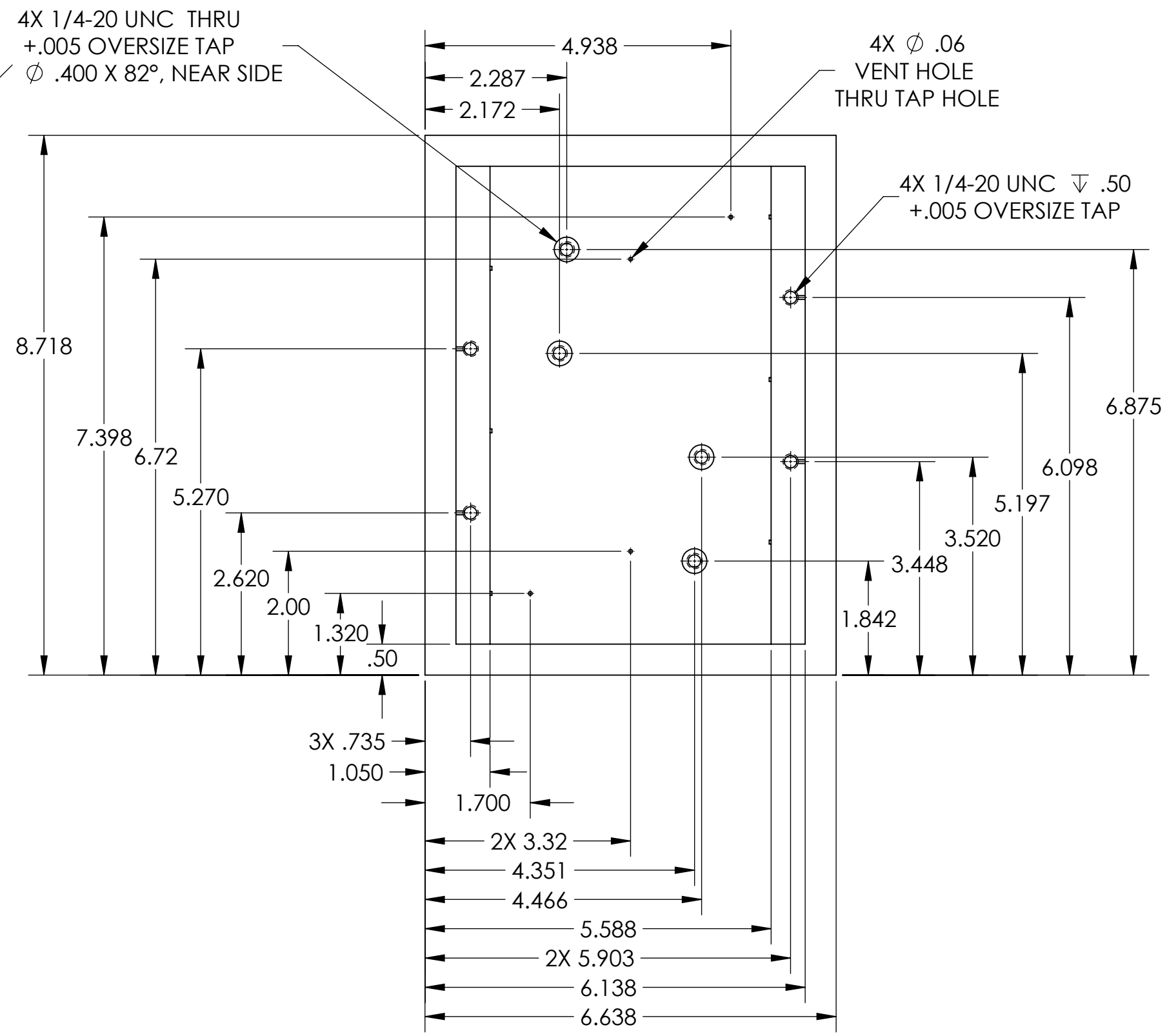
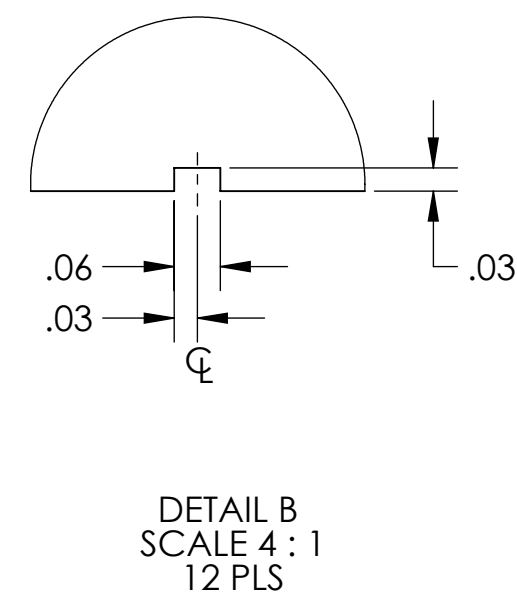


- NOTES CONTINUED:**
- 5. SCRIBE, ENGRAVE (A VIBRATORY TOOL MAY BE USED), LASER MARK OR MECHANICALLY STAMP (NO INKS OR DYES) DRAWING PART NUMBER, REVISION (AND VARIANT OR "TYPE" IF APPLICABLE) ON NOTED SURFACE OF PART FOLLOWED ON THE NEXT LINE WITH A THREE DIGIT SERIAL NUMBER. SERIAL NUMBERS START AT 001 FOR THE FIRST ARTICLE AND PROCEED CONSECUTIVELY. USE MINIMUM 0.12" HIGH CHARACTERS, UNLESS THE SIZE OF THE PART DICTATES SMALLER CHARACTERS. EXAMPLE: DXXXXXX-VY, TYPE-XX, S/N XXX
  - 6. APPROXIMATE WEIGHT = 8.731 LBS.
  - 7. MACHINE ALL SURFACES TO REMOVE OXIDES AND MILL FINISH. USE OF ABRASIVE REMOVAL TECHNIQUES IS NOT ALLOWED. REFER TO LIGO-E0900364
  - 8. ALL PARTS SHALL BE MANUFACTURED IN ACCORDANCE WITH LIGO SPECIFICATION E0900364.
  - 9. ALL MATERIAL IS TO BE VIRGIN MATERIAL (I.E. NO WELD REPAIRS, PLUGS OR RECYCLED MATERIAL). NO REPAIRS SHALL BE MADE UNLESS APPROVED IN ADVANCE, AND IN WRITING, BY LIGO LABORATORY. REFER TO LIGO-E0900364.
  - 10. SURFACE FINISH TO BE AS-PROCESSED FROM MILL/SUPPLIER, FREE FROM SCRATCHES OR GOUGES.



REV.	DATE	DCN #	DRAWING TREE #
v1	26 AUG 2011	E1100836	
v2	26 MAR 2012		

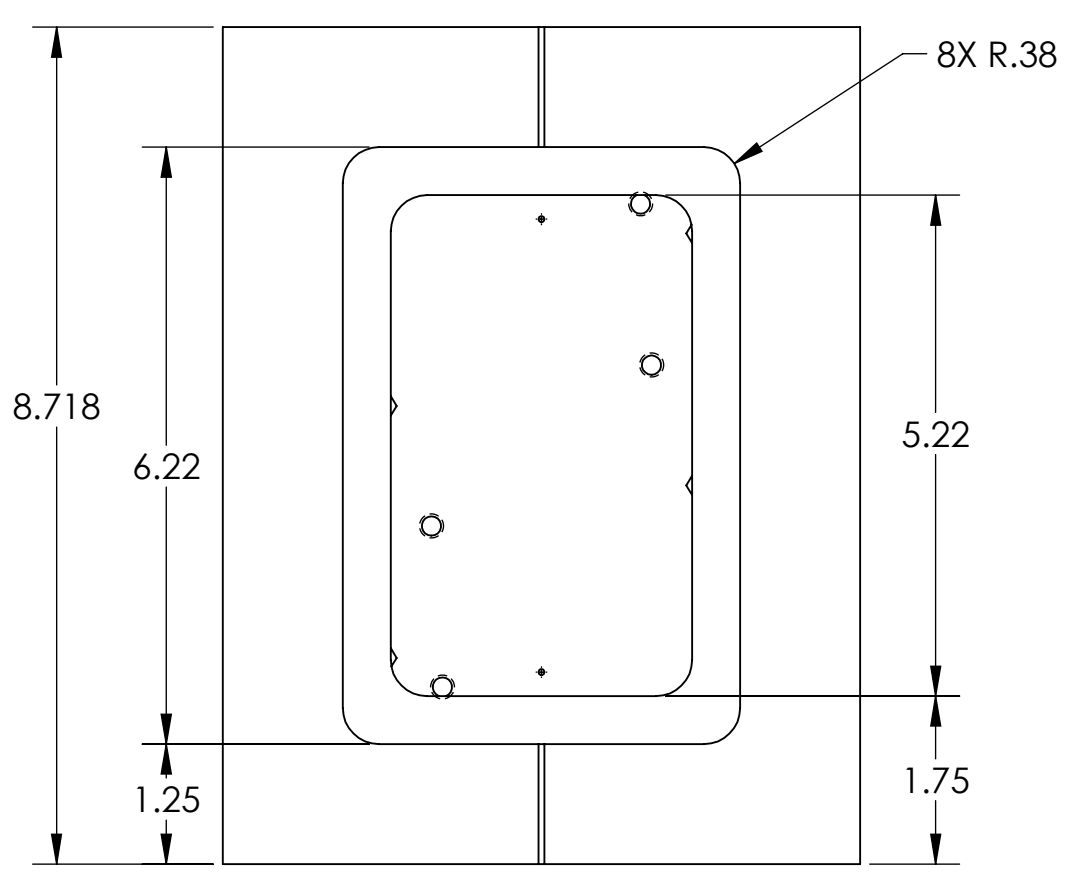
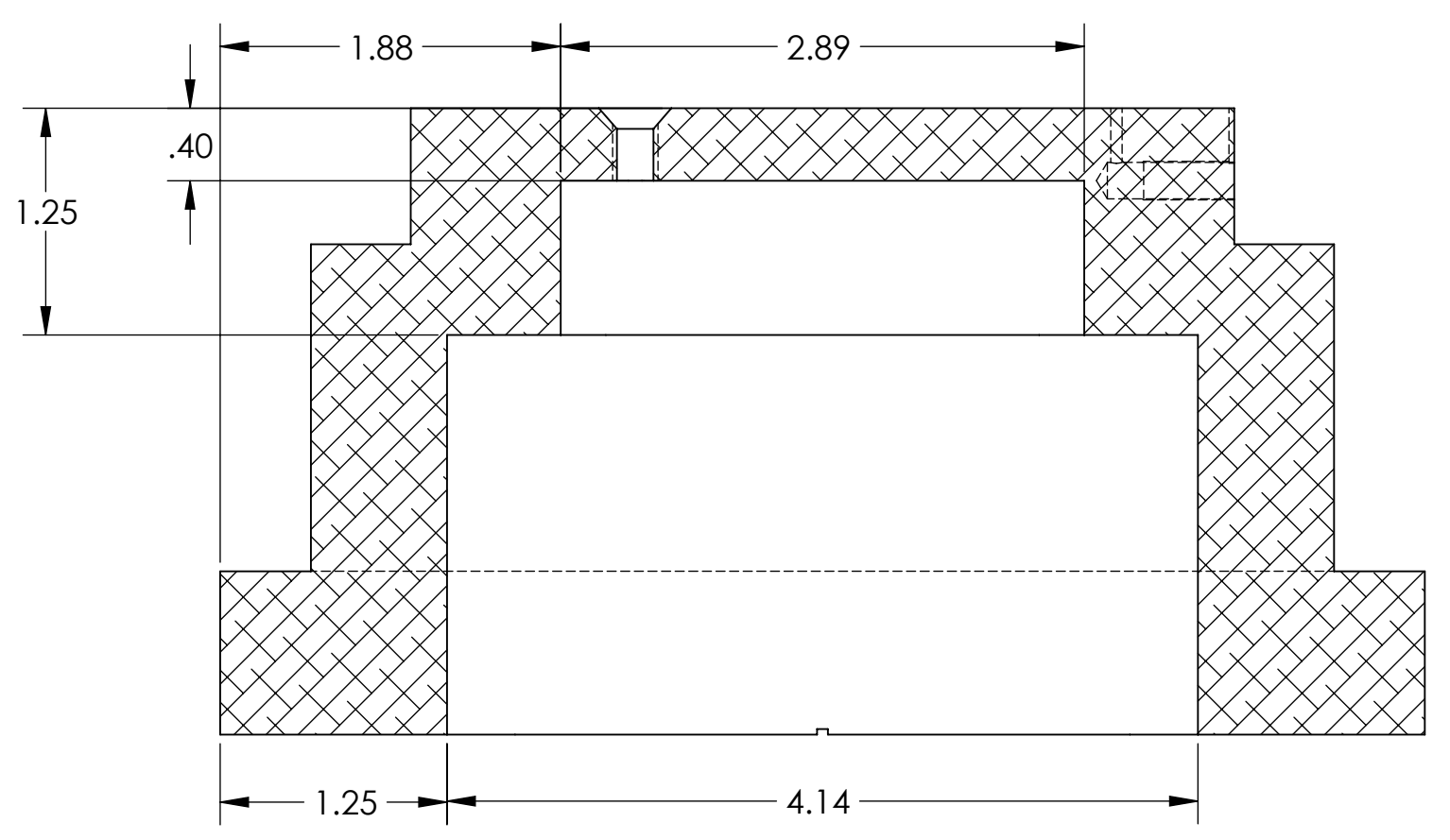
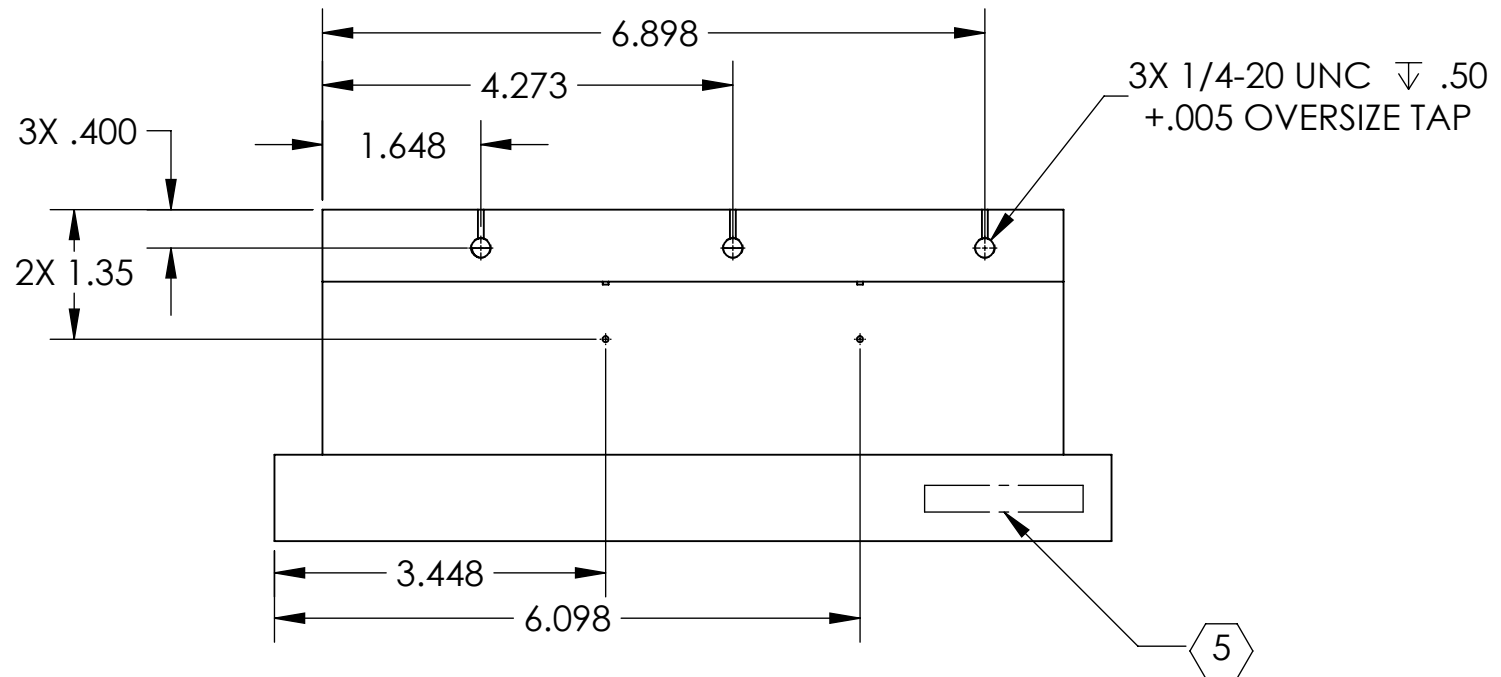
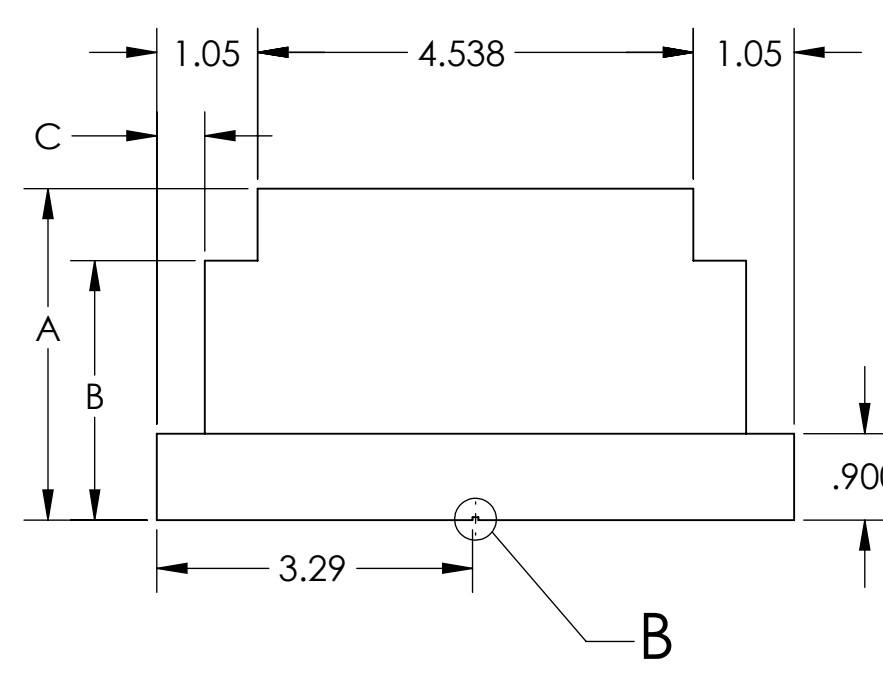
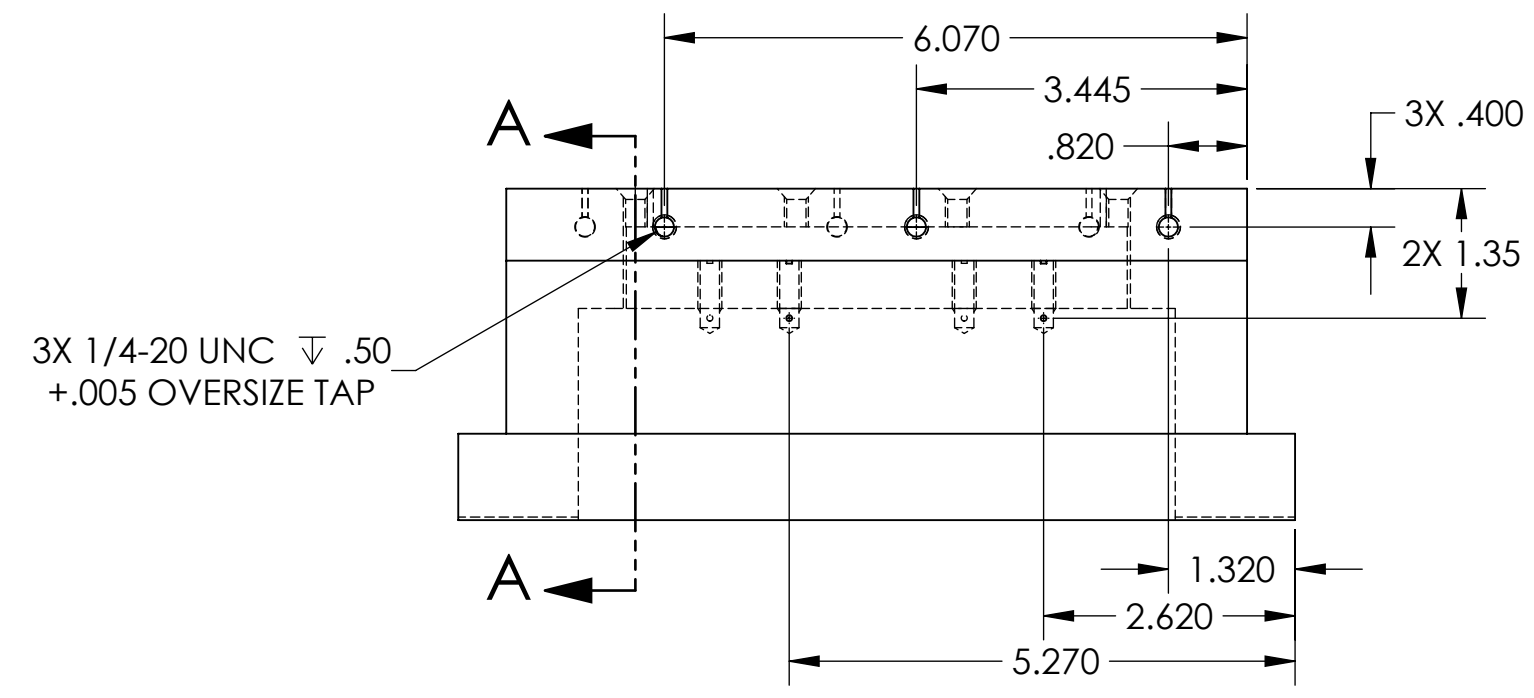
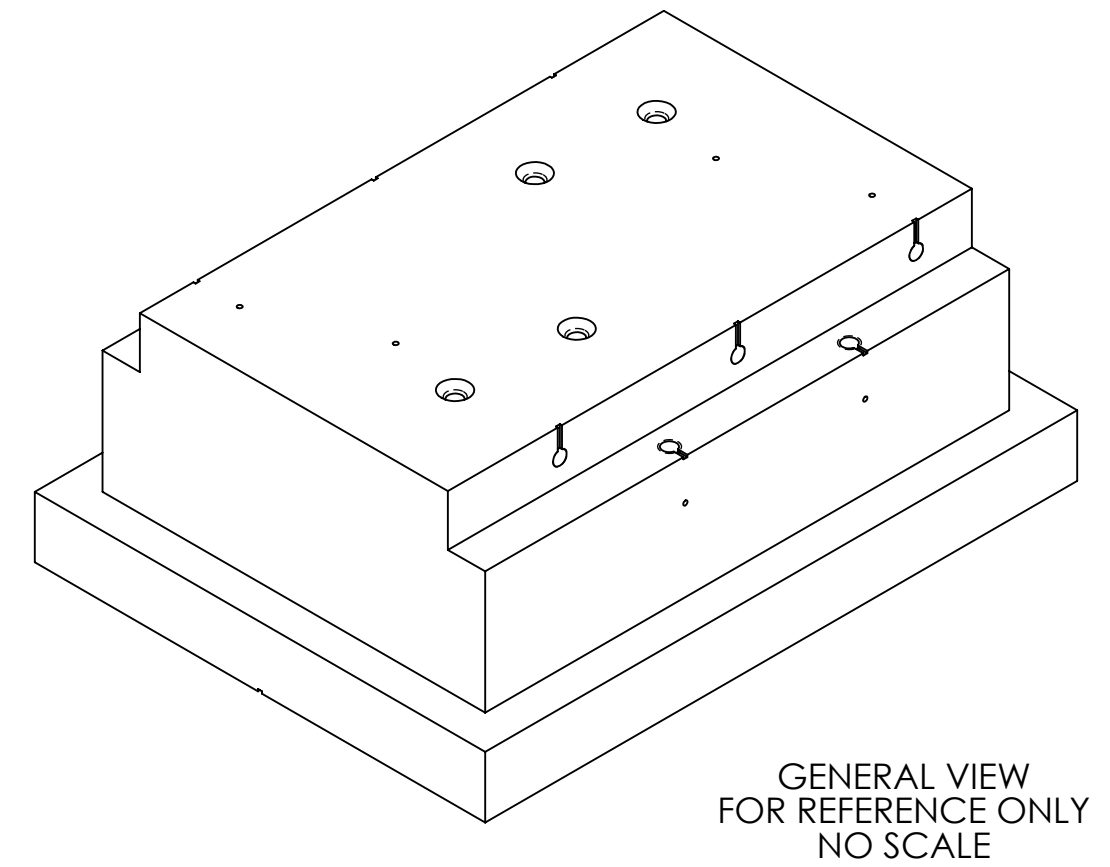


TABLE 1			
PART NUMBER	A	B	C
D1101608-1	3.453	2.703	.500
D1101608-2	2.666	1.916	.500
D1101608-3	1.650	.900	0
D1101608-4	3.288	2.538	.500
D1101608-5	3.004	2.254	.500

NOTES AND TOLERANCES: (UNLESS OTHERWISE SPECIFIED)	
DIMENSIONS ARE IN INCHES	
TOLERANCES: .XX ± .015 .XXX ± .005	
ANGULAR ± .5°	
MATERIAL	FINISH
6061-T6 Al	63 μinch

CALIFORNIA INSTITUTE OF TECHNOLOGY LIGO MASSACHUSETTS INSTITUTE OF TECHNOLOGY		PART NAME	
ADVANCED LIGO		αLIGO, HAM SCRAPER BAFFLE BASE	
DESIGNER	M.HILLARD	DATE	16 Aug. 2011
DRAFTER	M.HILLARD	DATE	13 Sept. 2011
CHECKER	-	DATE	13 Sept. 2011
APPROVAL	-	DATE	13 Sept. 2011
NEXT ASSY		SCALE: 1:2	
D1101599		PROJECTION:	
		SHEET 1 OF 1	

D1101608.PART.PDM.REV.X-045.DRAWING.PDM.REV.X-029