

D1101707 Shelf, Eddy current damper, UIM Tooling, aLIGO, PART PDM REV: X-000, DRAWING PDM REV: X-000

NOTES CONTINUED:
 5. SCRIBE, ENGRAVE (A VIBRATORY TOOL MAY BE USED), LASER MARK OR MECHANICALLY STAMP (NO INKS OR DYES) DRAWING PART NUMBER, REVISION (AND VARIANT OR "TYPE" IF APPLICABLE) ON NOTED SURFACE OF PART FOLLOWED ON THE NEXT LINE WITH A THREE DIGIT SERIAL NUMBER. SERIAL NUMBERS START AT 001 FOR THE FIRST ARTICLE AND PROCEED CONSECUTIVELY. USE MINIMUM 0.12" HIGH CHARACTERS, UNLESS THE SIZE OF THE PART DICTATES SMALLER CHARACTERS. EXAMPLE: DXXXXXX-VY, TYPE-XX, S/N XXX

6. APPROXIMATE WEIGHT = X.XXX LB.

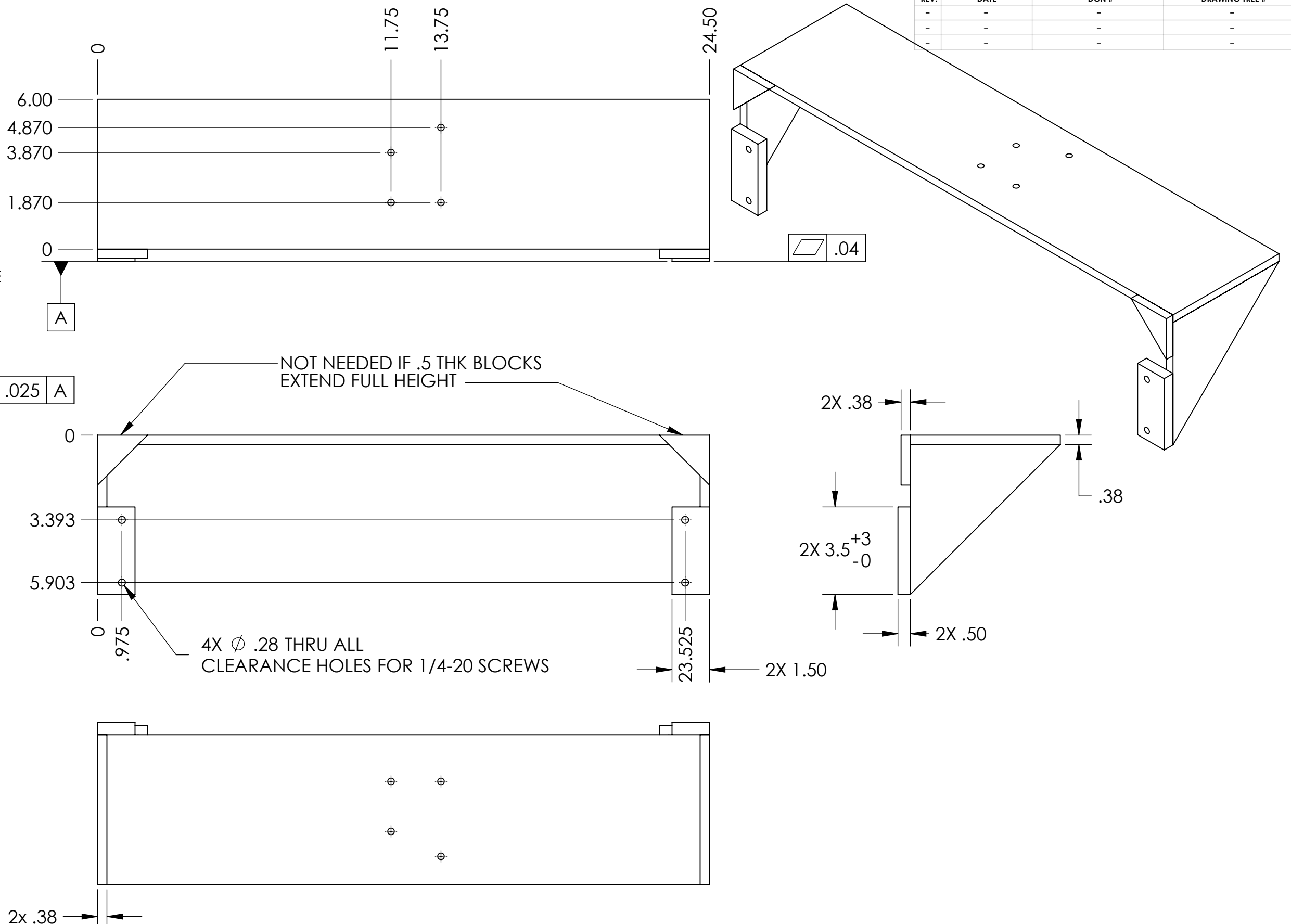
7. ALL PARTS SHALL BE MANUFACTURED IN ACCORDANCE WITH LIGO SPECIFICATION E0900364.

8. EITHER: WELDED CONSTRUCTION, OR ADD TAPPED & CLEARANCE HOLES FOR 10-32 SCHS SCREWS TO FASTEN PARTS TOGETHER. COUNTER BORE FOR .5" THK BLOCKS AND SMALL ANGLE BRACES ONLY.

WEIGHT SUPPORTED BY SHELF WILL BE 45LB MAX (INCLUDING SHELF)

9. .5" THK BLOCKS MAY EXTEND FULL HEIGHT INPLACE OF SMALL ANGLE BRACES.

REV.	DATE	DCN #	DRAWING TREE #
-	-	-	-
-	-	-	-
-	-	-	-



NOTES AND TOLERANCES: (UNLESS OTHERWISE SPECIFIED)

DIMENSIONS ARE IN MILLIMETERS

TOLERANCES:
 .XX ± .06
 .XXX ± .010
 ANGULAR ± 0.5°

1. INTERPRET DRAWING PER ASME Y14.5-1994.
 2. REMOVE ALL SHARP EDGES, .005-.015, FOR MACHINED PARTS. ROUND ALL EDGES APPROXIMATELY R.02 FOR SHEET METAL PARTS.
 3. DO NOT SCALE FROM DRAWING.
 4. -

MATERIAL	ALUMINUM	FINISH	125 μinch
----------	----------	--------	-----------

CALIFORNIA INSTITUTE OF TECHNOLOGY MASSACHUSETTS INSTITUTE OF TECHNOLOGY		PART NAME Shelf, Eddy current damper, UIM Tooling, aLIGO	
SYSTEM	LIGO	SUB-SYSTEM	SUS
DESIGNER	SBARNUM	25 AUG 2011	SIZE DWG. NO.
DRAFTER	SBARNUM	28 AUG 2011	B
CHECKER	SBARNUM	28 AUG 2011	D1101707
APPROVAL	MBARTON	28 AUG 2011	REV. v1
NEXT ASSY		D1101702	SCALE: 1:4
PROJECTION:		SHEET 1 OF 1	