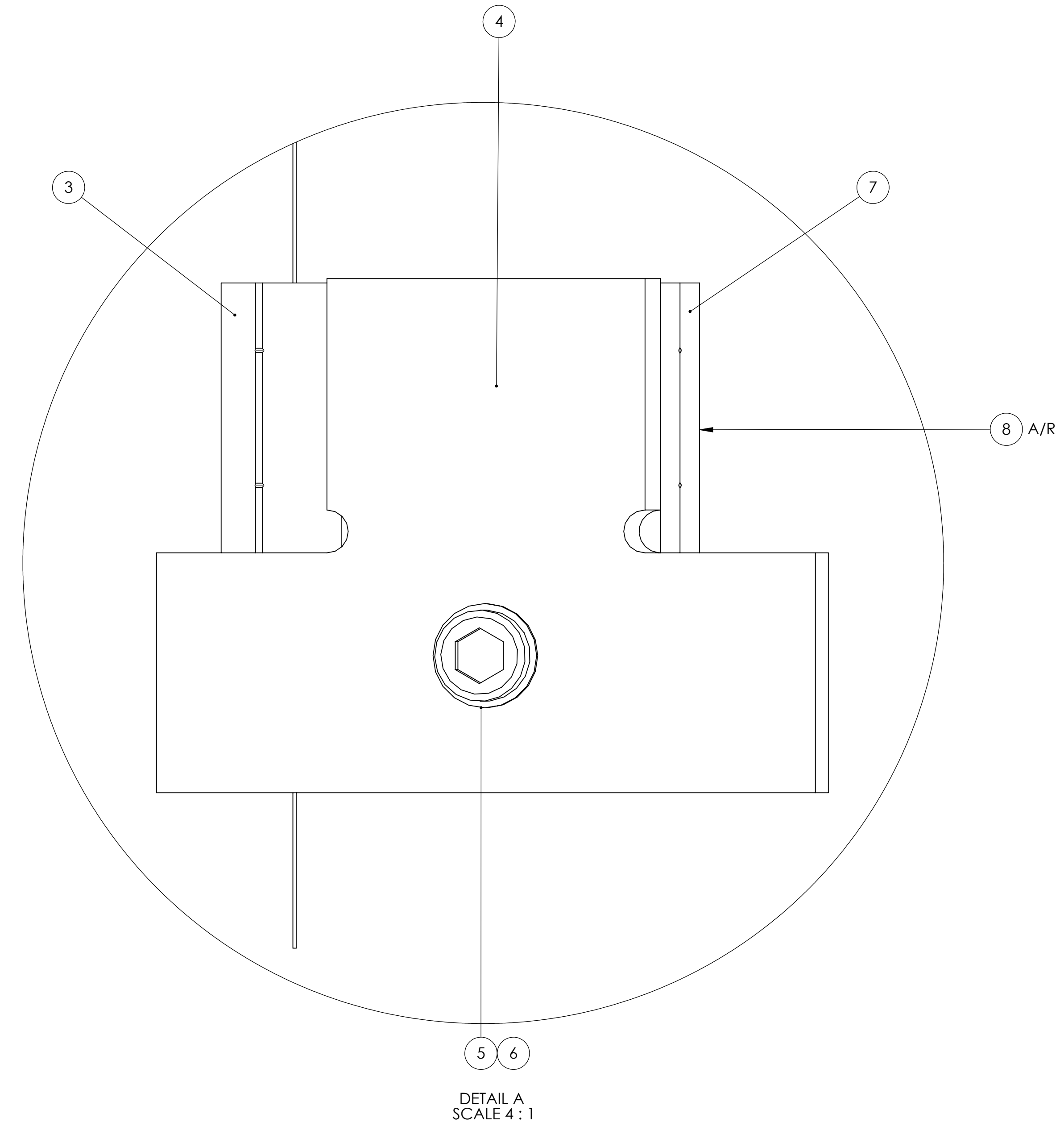
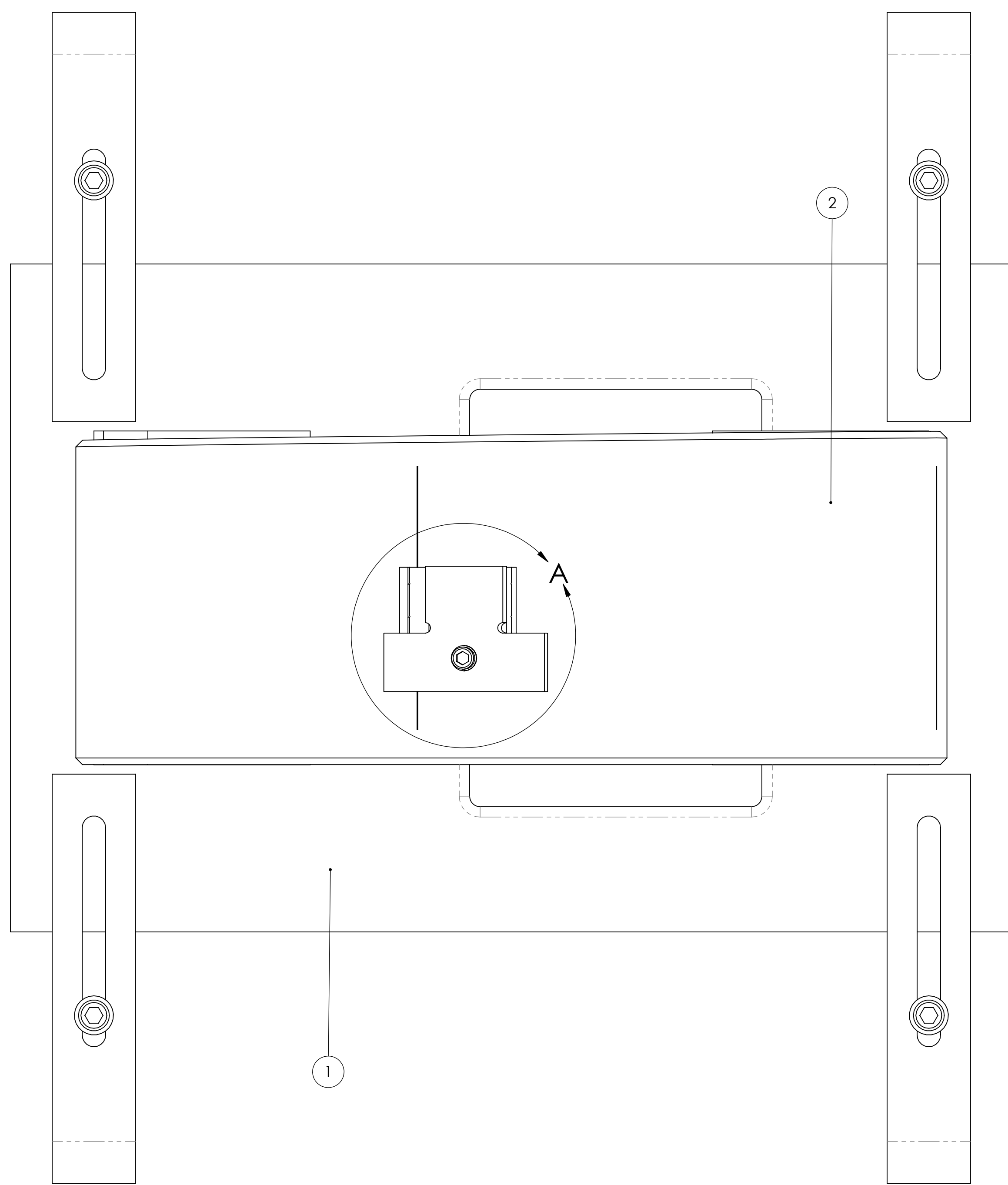


REV.	DATE	DCN #	DRAWING TREE #
v1	15 SEP 2011	E1100865	E080191
-	-	-	-
-	-	-	-



DETAIL A
SCALE 4 : 1

ITEM NO.	PART NUMBER	DESCRIPTION	MATERIAL	REQ	SPARE	TOTAL
8	-	UHV-COMPATIBLE ADHESIVE (MASTERBOND EP30-2 OR EQUIVALENT)	-	A/R	0	0
7	D0901286	SECONDARY METAL PRISM BREAKOFF, HLTS	316 SSSL	1	0	1
6	-	SCREW, SOCKET HEAD CAP, #8-32 UNC-2A X 0.375 LONG	300 SSSL	1	0	1
5	-	WASHER, FLAT, VENTED, #8 [U-C COMPONENTS P/N WFV-08 OR EQUIVALENT]	300 SSSL	1	0	1
4	D1101790	SECONDARY PRISM PLACEMENT FIXTURE, GLASS OPTIC	PTFE	1	0	1
3	D070441	PRISM BREAKOFF, LOWER WIRE, OPTIC, HLTS	SAPPHIRE	1	0	1
2	D080662, D080663 OR D080664	HLTS OPTIC (PR3, F-PR3 OR SR3)	GLASS	1	0	1
1	D0902658	OPTIC HOLDER, HAM TRIPLE SUS.	N/A	1	0	1

NOTES AND TOLERANCES: (UNLESS OTHERWISE SPECIFIED)

CALIFORNIA INSTITUTE OF TECHNOLOGY MASSACHUSETTS INSTITUTE OF TECHNOLOGY		PART NAME SECONDARY PRISM PLACEMENT FIXTURE ARRANGEMENT, GLASS OPTIC	
SYSTEM ADVANCED LIGO	SUB-SYSTEM SUS	DESIGNER D. BRIDGES	DATE 15 SEP 2011
DRAFTER D. BRIDGES	CHECKER B. MOORE	DATE 05 OCT 2011	DATE 06 OCT 2011
FINISH N/A μinch		SCALE 1:1	PROJECTION
MATERIAL N/A		APPROVAL 	REV. v1
NEXT ASSY HLTS OVERALL ASSY AND FIXTURES		DWG. NO. D1101811	SHEET 1 OF 1

D:\101811_Advanced\UCO_305_HLTS_Secondary_Prism_Placement_Fixture_Arrangement_Glass_Optic_Par_PDM_REV-X.003.DRAWING_PDM_REV-X.000