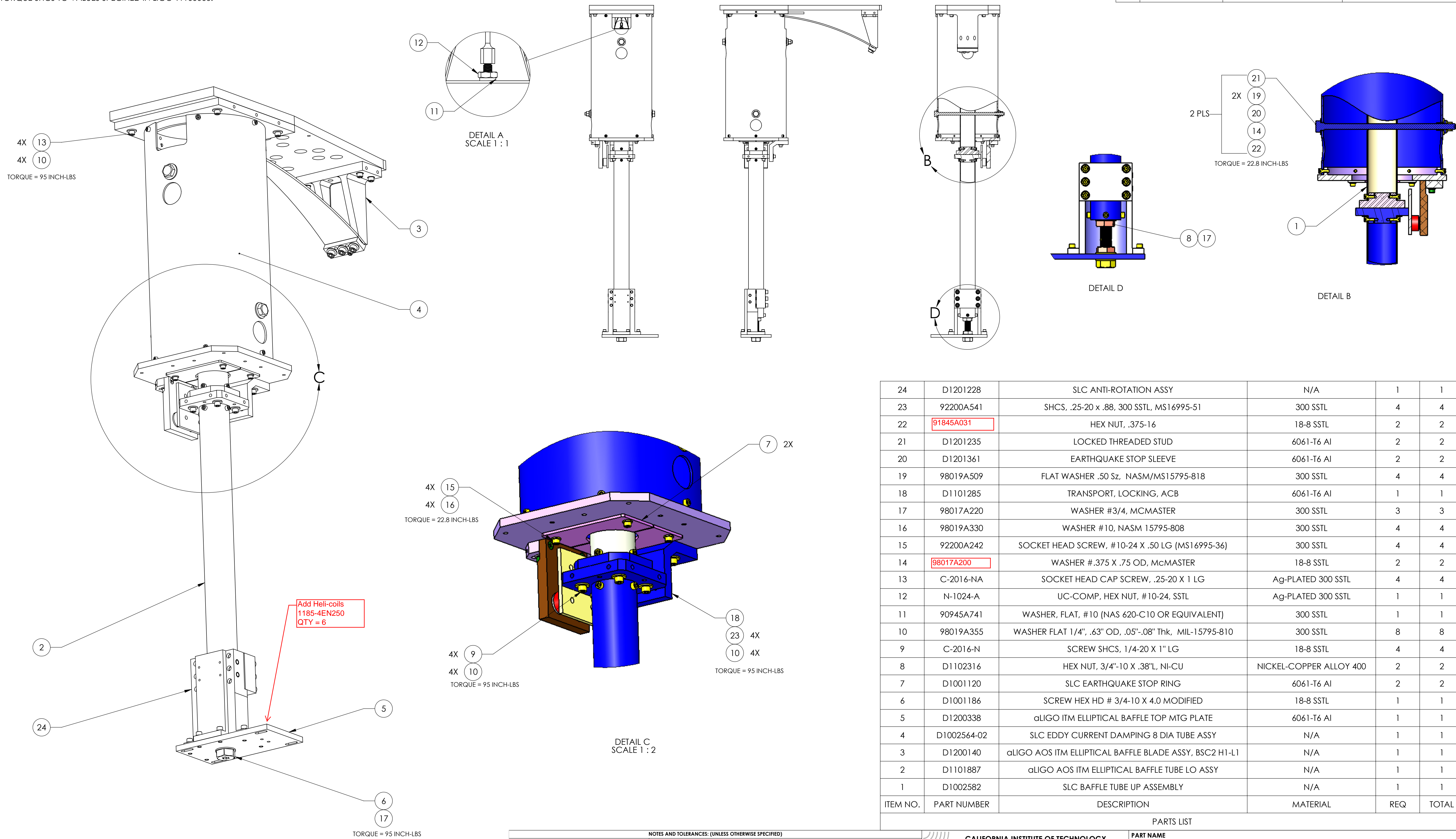


NOTES CONTINUED:

- 5. APPROXIMATE WEIGHT = 54.752 LBS.
- 6. TORQUE SHCS TO VALUES SPECIFIED IN LIGO-T1 100066.

REV.	DATE	DCN #	DRAWING TREE #
v1	04 OCT 2011	E1101007	E1101041
v2	15 JUN 2012	-	-
v3	18 OCT 2012	-	-



ITEM NO.	PART NUMBER	DESCRIPTION	MATERIAL	REQ	TOTAL
24	D1201228	SLC ANTI-ROTATION ASSY	N/A	1	1
23	92200A541	SHCS, .25-20 x .88, 300 SSSL, MS16995-51	300 SSSL	4	4
22	91845A031	HEX NUT, .375-16	18-8 SSSL	2	2
21	D1201235	LOCKED THREADED STUD	6061-T6 Al	2	2
20	D1201361	EARTHQUAKE STOP SLEEVE	6061-T6 Al	2	2
19	98019A509	FLAT WASHER .50 Sz, NASM/MS15795-818	300 SSSL	4	4
18	D1101285	TRANSPORT, LOCKING, ACB	6061-T6 Al	1	1
17	98017A220	WASHER #3/4, MCMaster	300 SSSL	3	3
16	98019A330	WASHER #10, NASM 15795-808	300 SSSL	4	4
15	92200A242	SOCKET HEAD SCREW, #10-24 X .50 LG (MS16995-36)	300 SSSL	4	4
14	98017A200	WASHER #.375 X .75 OD, MCMaster	18-8 SSSL	2	2
13	C-2016-NA	SOCKET HEAD CAP SCREW, .25-20 X 1 LG	Ag-PLATED 300 SSSL	4	4
12	N-1024-A	UC-COMP, HEX NUT, #10-24, SSSL	Ag-PLATED 300 SSSL	1	1
11	90945A741	WASHER, FLAT, #10 (NAS 620-C10 OR EQUIVALENT)	300 SSSL	1	1
10	98019A355	WASHER FLAT 1/4", .63" OD, .05"-.08" Thk, MIL-15795-810	300 SSSL	8	8
9	C-2016-N	SCREW SHCS, 1/4-20 X 1" LG	18-8 SSSL	4	4
8	D1102316	HEX NUT, 3/4"-10 X .38"L, NI-CU	NICKEL-COPPER ALLOY 400	2	2
7	D1001120	SLC EARTHQUAKE STOP RING	6061-T6 Al	2	2
6	D1001186	SCREW HEX HD # 3/4-10 X 4.0 MODIFIED	18-8 SSSL	1	1
5	D1200338	αLIGO ITM ELLIPTICAL BAFFLE TOP MTG PLATE	6061-T6 Al	1	1
4	D1002564-02	SLC EDDY CURRENT DAMPING 8 DIA TUBE ASSY	N/A	1	1
3	D1200140	αLIGO AOS ITM ELLIPTICAL BAFFLE BLADE ASSY, BSC2 H1-L1	N/A	1	1
2	D1101887	αLIGO AOS ITM ELLIPTICAL BAFFLE TUBE LO ASSY	N/A	1	1
1	D1002582	SLC BAFFLE TUBE UP ASSEMBLY	N/A	1	1

NOTES AND TOLERANCES: (UNLESS OTHERWISE SPECIFIED)

1. INTERPRET DRAWING PER ASME Y14.5-1994.
2. REMOVE ALL SHARP EDGES, .005-.015, FOR MACHINED PARTS. ROUND ALL EDGES APPROXIMATELY R.02 FOR SHEET METAL PARTS.
3. DO NOT SCALE FROM DRAWING.
4. ALL MACHINING FLUIDS MUST BE FULLY SYNTHETIC, FULLY WATER SOLUBLE AND FREE OF SULFUR, SILICONE, AND CHLORINE.

DIMENSIONS ARE IN INCHES
 TOLERANCES:
 .XX ± .02
 .XXX ± .005
 ANGULAR ± 1.0°

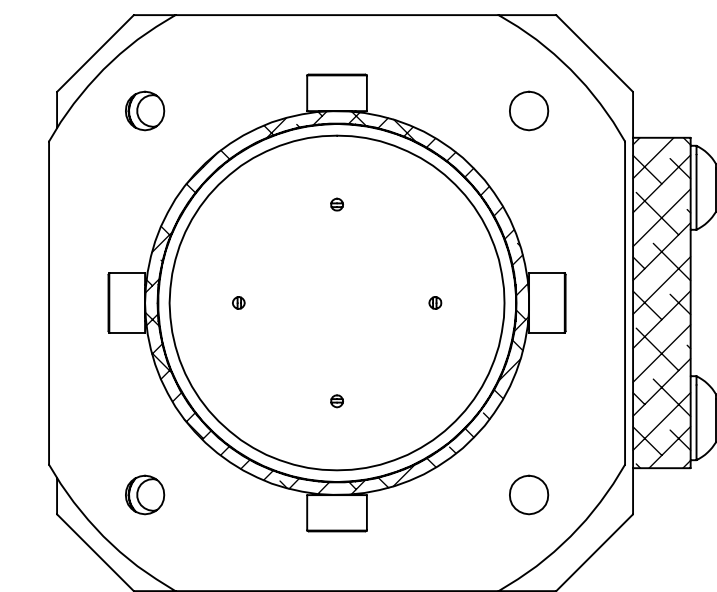
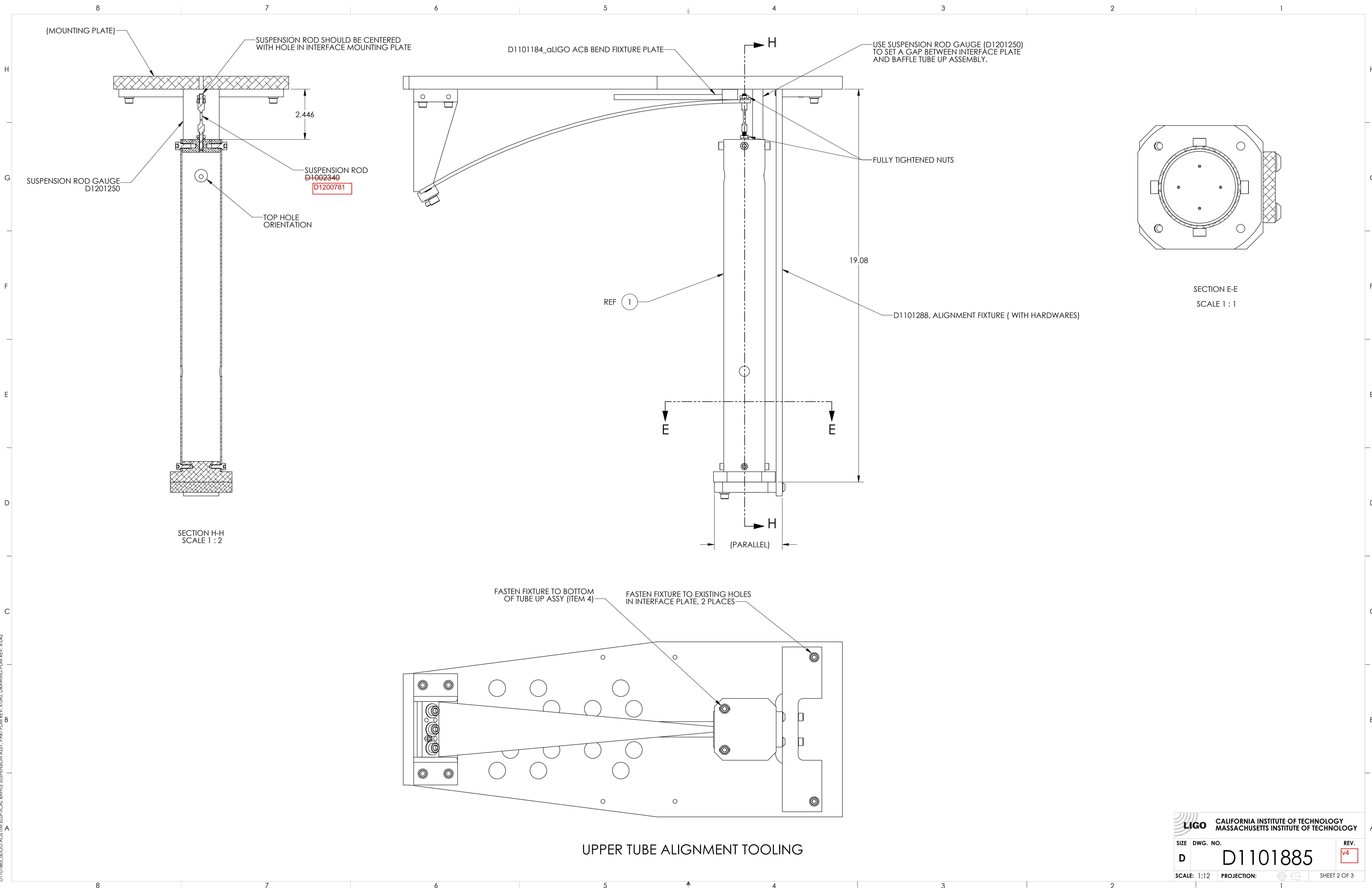
MATERIAL N/A **FINISH** N/A μinch

ADVANCED LIGO **AOS** **SLC** **αLIGO AOS ITM ELLIPTICAL BAFFLE SUSPENSION ASSY, H1/L1**

DESIGNER J. TERRAZAS **DATE** 04 OCT 2011 **SIZE** D **DWG. NO.** D1101885 **REV.** v4
DRAFTER J. TERRAZAS **DATE** 06 OCT 2011
CHECKER H. KELMAN
APPROVAL M. SMITH

SCALE: 1:3 **PROJECTION:** **SHEET 1 OF 3**

D1101885-αLIGO AOS ITM ELLIPTICAL BAFFLE SUSPENSION ASSY, PART PDM REV. X:090, DRAWING PDM REV. X:042



SECTION E-E
SCALE 1 : 1

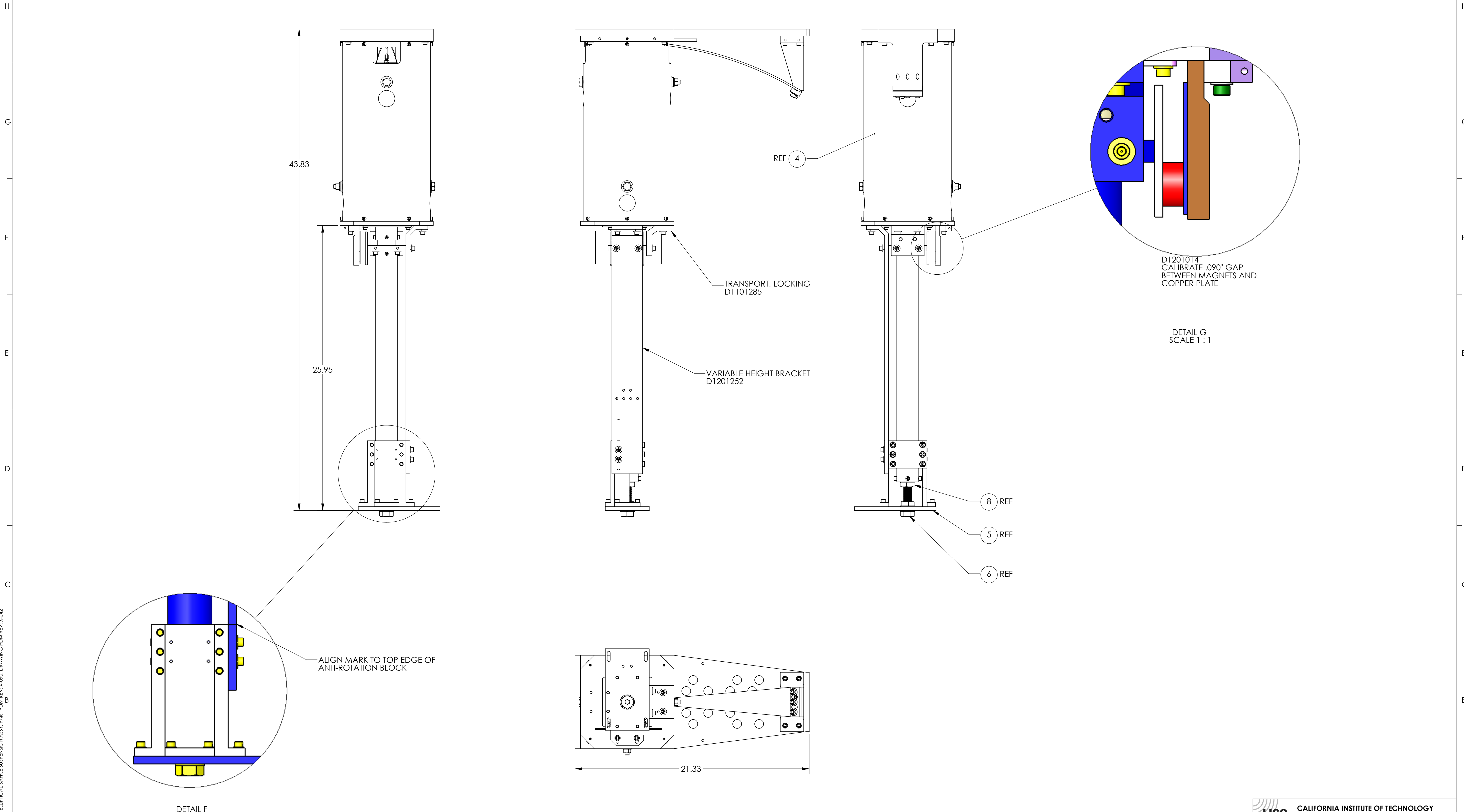
SECTION H-H
SCALE 1 : 2

UPPER TUBE ALIGNMENT TOOLING

LIGO CALIFORNIA INSTITUTE OF TECHNOLOGY MASSACHUSETTS INSTITUTE OF TECHNOLOGY		REV.
SIZE DWG. NO.	D1101885	v4
SCALE: 1:12	PROJECTION:	SHEET 2 OF 3

D1101885_gLIGO ACB TELEOPTICAL BAFFLE SUSPENSION ASSY, PART PDM REV: X:090, DRAWING PDM REV: X:042

8 7 6 5 4 3 2 1



D:\101885_01\UGO_A05_ITM\ELLIPITICAL_BAFFLE_SUSPENSION_ASSY_PART.PDM_REV.X:090_DRAWING.PDM_REV.X:042

LIGO CALIFORNIA INSTITUTE OF TECHNOLOGY
 MASSACHUSETTS INSTITUTE OF TECHNOLOGY

SIZE	DWG. NO.	REV.
D	D1101885	v4
SCALE: 1:12	PROJECTION:	SHEET 3 OF 3